

# WP2FCF26/E2

Mid sized full cutoff wallpack with emergency battery backup.

Color: Bronze

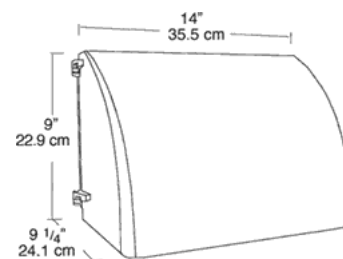
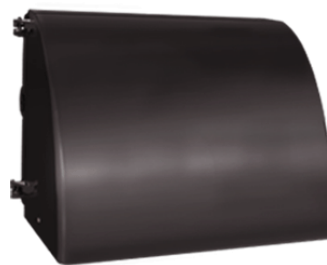
Weight: 19.9 lbs

## Lamp Info

Type: 26W Triple  
 Watts: 26  
 Shape/Size: N/A  
 Base: N/A  
 ANSI: N/A  
 Hours: 12,000  
 Lamp Lumens: 1,800  
 Efficacy: 62 LPW

## Ballast Info

Type: Elec HPF QT  
 120V: 0.24  
 208V: 0.2  
 240V: 0.18  
 277V: 0.11  
 Input Watts: 29W  
 Efficiency: 90%



## Technical Specifications

### Backup Battery:

Bodine "Coldpak" operates CFL lamp for 90 minutes after power failure. Maintenance free NiCad battery lasts 7-10 years. Rated -18C to +55C

### UL Listing:

Suitable for wet locations. HID fixtures can be wired with 90 C supply wiring if supply wires are routed 3" away from ballast.

### Housing:

Die cast aluminum, 1/2" NPS tapped holes top, both sides and back for conduit or photocontrol. Hinged refractor frame. Continuous silicone rubber gasket.

### Reflector:

Specular anodized aluminum, removable for installation. Symmetrical light pattern maximizes distance between fixtures.

### Cutoff Lens:

Tempered glass.

### Refractor:

Prismatic optics designed to minimize glare and throw light down and out. Heat resistant borosilicate glass.

### Finish:

Chip and fade resistant polyester powder coating.

### Emergency Battery Backup:

Bodine "Coldpak" will operate the CFL lamp for 90 minutes if power fails. Rated -20 C to +55 C. Battery is a maintenance free NiCad with 7 - 10 year life. Wired for 277V.

### Patents:

RAB sensor and fixture designs are protected under U.S. and International Intellectual Property laws

### Country of Origin:

Designed by RAB in New Jersey and assembled in the USA by IBEW Local 3

### Buy American Act Compliant:

This product is a COTS item manufactured in the United States, and is compliant with the Buy American Act.

### Recovery Act (ARRA) Compliant:

This product complies with the 52.225-21 "Required Use of American Iron, Steel, and Manufactured Goods-- Buy American Act-- Construction Materials (October 2010)

### Trade Agreements Act Compliant:

This product is a COTS item manufactured in the United States, and is compliant with the Trade Agreements Act.

### GSA Schedule:

This product is suitable for listing on the GSA Schedule of the US General Services in accordance with FAR Subpart 25.4

