

# WALLPACKS

## WP3, WP3C & WP3FC



**New!**  
Fully Shielded  
Full Cutoff



**RAB's 250 watt HID Wallpacks are energy efficient and packed with quality features. Available in Standard, Cutoff and Full Cutoff models. Perfect for security and perimeter lighting.**

Photocell mounting hole

Precision die cast aluminum housing with durable bronze or white polyester powder coat finish

Tempered glass refractor

Top, side and back conduit openings

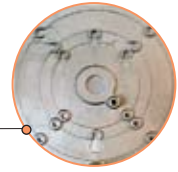
Drilling template on WP3 for easy box mounting

Door frame opens and remains captive for easy lamp replacement

Silicone gasket remains in place during relamping

Shipped in highly protective molded styrofoam packaging

Long life lamp supplied



## Product Information

	Watts	Lamp Type	Lamp Base	Ballast	Starting Amps / Operating Amps				Input Watts	Lamp ANSI	Initial Lumens	Lamp Hours
					120V	208V	240V	277V				
<b>High Pressure Sodium</b> Lamp included	250	ED28	Mogul	CWA HPF QT	1.8/2.5	1.0/1.5	0.9/1.3	0.8/1.1	295	S50	28,500	24,000
<b>Metal Halide</b> Lamp included P* = Pulse Start	200 250 250	T15 ED28 ED28	Mogul Mogul Mogul	CWA HPF QT CWA HPF QT CWA HPF QT	1.4/2.0 1.8/2.5 1.4/2.5	.8/1.2 1.0/1.5 .8/1.2	.7/1.0 .9/1.3 .7/1.0	.6/0.9 .8/1.1 .6/1.1	232 295 288	M136 M58 M138	21,000 21,000 25,000	15,000 10,000 15,000
<b>Compact Fluorescent</b>	120	2G8-1	Hex	Electronic HPF	1.2	1	.8	.6	139	*	9,000	20,000
<b>Induction</b>	85			Elec HPF 120v							6,000	100,000
<b>Factory Installed Options</b> Add suffix to catalog number				Button Photoell Specify Photocell voltage Swivel Photocell Specify Photocell voltage Single fusing for 120 and 277 volt Double fusing for 208 and 240 volt Quartz Restrike Tamperproof screws								
<b>Accessories</b>				Corrosion protected Wire Guard Clear Polycarbonate Shield Shade - Curved Shade - Rectangular								



480 volt only ballast (consult factory)



Wire Guard **GDWP3W**  
(fits WP3 only)



Polycarbonate Shield **GDWP3P**  
(fits WP3 only)



Curved Glare Shield **SHC3**  
(fits WP3/WP)



Rectangular Glare Shield **SHR3**  
(fits WP3/WP)

## Specifications

**UL Listing:**  
Suitable for wet locations.  
Fixtures can be wired with 90°C supply wiring if supply wires are routed 3" away from ballast.

**Housing:**  
Die cast aluminum, 1/2" NPS tapped top, both sides and back for conduit or photocell. Hinged refractor frame. Continuous silicone rubber gasket.

**Reflector:**  
Specular anodized aluminum, removable for installation. Symmetrical light pattern maximizes distance between fixtures.

**Refractor:**  
Prismatic optics designed to minimize glare and throw light down and out. WP3 Heat resistant borosilicate glass. WP3C/WP3FC: Tempered glass lens

**Socket:**  
4kv Pulse Rated Mogul Porcelain socket with nickel plated screw shell and spring loaded center contact.

**Finish:**  
Chip and fade resistant Bronze or White polyester powder coat finish.

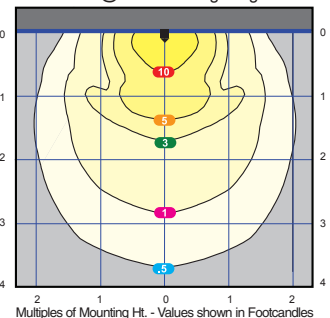
**Patents:**  
The designs of RAB fixtures are protected under U.S. and international intellectual property laws.

## Info Online 24/7

[www.rabweb.com](http://www.rabweb.com)  
Spec sheets • EZ Lighting Layouts  
Photometrics • Wiring Diagrams  
IES Files • Installation Instructions

## Photometrics See Page 172 for add'l Photometrics

250w HPS @ 16' Mounting Height



Mounting Height	Multiplier	Multiplier		
		Watts	HPS	MH CFL
8	4.0	—	—	.3
10	2.6	P* 200	—	.7
16	1.0	250	1.0	.7
20	.6	P* 250	—	.9
25	.4	P* 320	—	1.1
		P* 350	—	1.2
		400	1.8	1.3
		P* 400	—	1.4

### WP3

Large wallpack for 250 watts HPS or Metal Halide or 120 watt CFL. All aluminum precision die cast construction with tempered glass refractor. Lamp supplied.

Finish: ● Bronze  
○ White



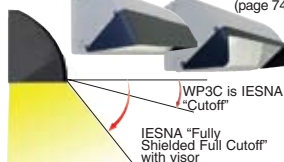
### WP3C Cutoff

Large cutoff wallpack for 250 watts HPS or Metal Halide or 120 watt CFL. All aluminum precision die cast construction with tempered glass refractor. Lamp supplied.

Finish: ● Bronze  
○ White



Visors & Blinders available (page 74)



WP3C has IESNA "Cutoff" light distribution. With the visor installed, WP3C achieves IESNA "Fully Shielded, Full Cutoff" distribution

### WP3FC Full Cutoff

Fully shielded, Full Cutoff Wallpack. Full Cutoff optics for 250 watt HPS, 200-250 watt MH or 120 watt CFL. Full Cutoff optics with flat tempered glass lens. Cap/Ignitor cradle and EZ mount knock-outs for easy wiring. Lamp supplied.

Finish: ● Bronze  
○ White



### Catalog Numbers

Bronze	White
WP3SC250QT	WP3SC250QTW
WP3H200PSQ	WP3H200PSQW
WP3H250QT	WP3H250QTW
WP3H250PSQ	WP3H250PSQW
WP3F120QT	WP3F120QTW
/PC	/PC
/PCS	/PCS
/F	/F
/FF	/FF
/QR	/QR
/TP	/TP
GDWP3W	GDWP3W
GDWP3P	GDWP3P
SHC3A	SHC3W
SHR3A	SHR3W

Bronze	White
WP3SCS250QT	WP3SCS250QTW
WP3CH200PSQ	WP3CH200PSQW
WP3CH250QT	WP3CH250QTW
WP3CH250PSQ	WP3CH250PSQW
WP3CF120QT	WP3CF120QTW
/PC	/PC
/PCS	/PCS
/F	/F
/FF	/FF
/QR	/QR
/TP	/TP
SHC3A	SHC3W
SHR3A	SHR3W

Bronze	White
WP3FCSC250QT	WP3FCSC250QTW
WP3FCH200PSQ	WP3FCH200PSQW
WP3FCH250QT	WP3FCH250QTW
WP3FCH250PSQ	WP3FCH250PSQW
GDWP3FC	GDWP3FC
SHC3A	SHC3W
SHR3A	SHR3W

Note: Guard and Shield may be used together for extra vandal resistance

### Dimensions

