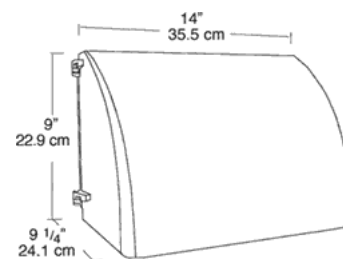
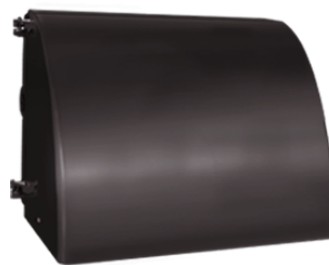


# WP2FCSN100/PC

Fully shielded, Full Cutoff wallpack. Full Cutoff optics with flat tempered glass lens. EZ mount knockouts for easy wiring. Lamp supplied.

Color: Bronze

Weight: 13.7 lbs



## Lamp Info

Type: ED17  
Watts: 100  
Shape/Size: N/A  
Base: N/A  
ANSI: N/A  
Hours: 24,000  
Lamp Lumens: 9,500  
Efficacy: 83 LPW

## Ballast Info

Type: R-NPF 120V  
120V: 3.1/2.1  
208V: N/A  
240V: N/A  
277V: N/A  
Input Watts: 115W  
Efficiency: 87%

## Technical Specifications

### UL Listing:

Suitable for wet locations. HID fixtures can be wired with 90 C supply wiring if supply wires are routed 3" away from ballast.

### Housing:

Die cast aluminum, 1/2" NPS tapped holes top, both sides and back for conduit or photocontrol. Hinged refractor frame. Continuous silicone rubber gasket.

### Reflector:

Specular anodized aluminum, removable for installation. Symmetrical light pattern maximizes distance between fixtures.

### Cutoff Lens:

Tempered glass.

### Refractor:

Prismatic optics designed to minimize glare and throw light down and out. Heat resistant borosilicate glass.

### Finish:

Chip and fade resistant polyester powder coating.

### Photocell:

Button Photocell installed and wired for 120V

### Socket:

HID 4kv Pulse Rated porcelain socket with nickel plated screw shell and spring loaded center contact. CFL Plug-in type GX24q-4 base Thermoplastic

### Patents:

RAB sensor and fixture designs are protected under U.S. and International Intellectual Property laws.

### For use on LEED Buildings:

IDA Dark Sky Approval means that this fixture can be used to achieve LEED Credits for Light Pollution Reduction.

### Dark Sky Approved:

The International Dark Sky Association has approved this product as a full cutoff, fully shielded luminaire.

### Country of Origin:

Designed by RAB in New Jersey and assembled in the USA by IBEW Local 3

### Buy American Act Compliant:

This product is a COTS item manufactured in the United States, and is compliant with the Buy American Act.

### Recovery Act (ARRA) Compliant:

This product complies with the 52.225-21 "Required Use of American Iron, Steel, and Manufactured Goods-- Buy American Act-- Construction Materials (October 2010)

### Trade Agreements Act Compliant:

This product is a COTS item manufactured in the United States, and is compliant with the Trade Agreements Act.

### GSA Schedule:

This product is suitable for listing on the GSA Schedule of the US General Services in accordance with FAR Subpart 25.4

: