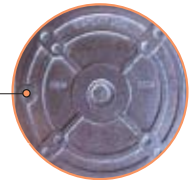


WALLPACKS WP2



Mid size Wallpack for up to 150 watt HPS, 175 watt Metal Halide and 84 watt Fluorescent. Converts to a cutoff fixture with WP2C Retrofit kit.

- Photocell mounting hole
- Hinged door frame opens and remains captive for easy relamping
- Precision die cast aluminum housing with durable bronze or white polyester powder coat finish
- Tempered glass refractor
- Drilling template for easy box mounting
- Silicone gasket
- Top, side and back conduit openings
- Cutoff Glare Shield for Friendly Lighting
- Long life lamp supplied
- Tempered glass lens



PULSE START
Metal Halide
Lamps and ballasts for energy savings & longer lamp life.

Product Information

High Pressure Sodium
Lamp supplied with fixture
QT = Quad Tap = 120 / 208 / 240 / 277 volts

Watts	Lamp Type	Lamp Base	Ballast	Starting Amps / Operating Amps			
				120V	208V	240V	277V
70	ED17	Med	R-HPF120V	.9 / .8			
70	ED17	Med	HX-HPF QT	.6 / .8	.4 / .5	.4 / .3	.3 / .4
100	ED17	Med	R-NPF 120V	3.0 / 2.5			
100	ED17	Med	R-HPF 120V	1.5 / 1.1			
100	ED17	Med	HX-HPF QT	.9 / 1.1	.6 / .6	.5 / .6	.4 / .5
150	ED17	Med	R-NPF120V	4.1 / 2.6			
150	ED17	Med	HX-HPF QT	1.6 / 1.6	.9 / .9	.8 / .8	.7 / .7

Input Watts	Lamp ANSI	Initial Lumens	Lamp Hours
86	S62	6,300	24,000
91	S62	6,300	24,000
115	S54	9,500	24,000
115	S54	9,500	24,000
115	S54	9,500	24,000
170	S55	16,000	24,000
188	S55	16,000	24,000

Metal Halide
Lamp supplied with fixture
Pulse Start = Pulse Start
QT = Quad Tap = 120 / 208 / 240 / 277 volts

70	ED17	Med	HX-NPF 120V	2.8 / 2.2			
100	ED17	Med	HX-HPF QT	.95 / 1.2	.6 / .7	.5 / .6	.4 / .5
125	ED17/HBU	Med	CWA-HPF QT	.9 / 1.3	.5 / .8	.4 / .7	.4 / .6
150	ED17/U	Med	CWA-HPF QT	1.3 / 1.6	1 / 1	.7 / .8	.6 / .7
150	ED17	Med	CWA-HPF QT	1.1 / 1.6	.6 / .9	.5 / .8	.5 / .7
175	ED17	Med	CWA-HPF QT	1.3 / 1.8	.8 / 1.1	.7 / .9	.6 / .8

94	M98	5,600	15,000
129	M90	9,000	15,000
150	M150	12,000	15,000
190	M102	14,000	15,000
185	M107	12,500	10,000
210	M57	13,500	10,000

Compact Fluorescent
Lamp supplied with fixture



Watts	Lamp Type	Lamp Base	Ballast	120V	208V	240V	277V
26	Triple	GX24q-3	Electronic QT	.3	.2	.1	.1
32	Triple	GX24q-3	Electronic QT	.3	.2	.2	.1
42	Triple	GX24q-4	Electronic QT	.4	.3	.2	.2
84	2-42w Triple	GX24q-4	Electronic QT	.8	.6	.5	.4

29		1,800	12,000
36		2,400	12,000
46		3,200	12,000
93		6,400	12,000

Factory Installed Options
Add suffix to catalog number

- Button Photocell Specify Photocell voltage
- Swivel Photocell Specify Photocell voltage
- Single fusing for 120 and 277 volt
- Double fusing for 208 and 240 volt
- Tamperproof screws



Accessories

- Corrosion protected Wire Guard
- Clear Polycarbonate Shield
- Shade Glare Shield - Curved
- Shade Glare Shield - Rectangular
- Emergency Battery Back Up 120V: (for 42w Fluorescent WP2 models only) 277V:



Specifications

UL Listing:
Suitable for wet locations. HID fixtures can be wired with 90°C supply wiring if supply wires are routed 3" away from ballast.

Housing:
Die cast aluminum, 1/2" NPS tapped holes top, both sides and back for conduit or photocell. Hinged refractor frame. Continuous silicone rubber gasket.

Reflector:
Specular anodized aluminum, removable for installation. Symmetrical light pattern maximizes distance between fixtures.

WP2 Cutoff Lens:
Tempered glass

WP2 Refractor:
Prismatic optics designed to minimize glare and throw light down and out. Heat resistant borosilicate glass.

Socket:
HID: 4kV Pulse Rated Porcelain socket with nickel plated screw shell and spring loaded center contact.
CFL: GX24q-3 = 26w & 32w
GX24q-4 = 42w base.
Plug in type thermoplastic

Finish:
Chip and fade resistant Bronze or White polyester powder coat finish.

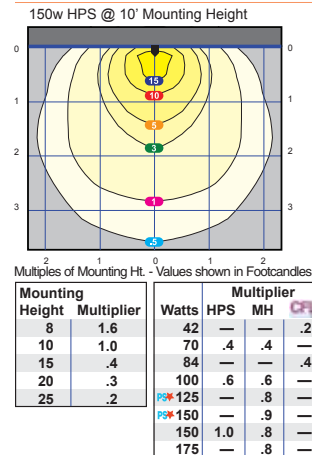
Patents:
The designs of RAB fixtures are protected under U.S. and international intellectual property laws.

Emergency Battery Back Up:
Bodine "Coldpak" will operate the WP2 42watt CFL lamp for 90 minutes if power fails. Rated -20°C to +55°C. Battery is a maintenance free NiCad with 7-10 year life.

www.rabweb.com
Spec sheets • EZ Lighting Layouts
Photometrics • Wiring Diagrams
IES Files • Installation Instructions



Photometrics



Pick the Cutoff You Need



WALLPACKS

WP2

Mid size wallpack for 70 to 150 watts HPS, 70-175 watt Metal Halide or 84 watts (2x42) Compact Fluorescent. All aluminum precision die cast construction with tempered glass refractor. Lamp supplied.

Finish: ● Bronze
○ White



WP2 Cutoff Retrofit Kit

Convert existing RAB WP2 HID wallpacks to cutoff beam spread. Kit includes: cutoff shield, reflector, socket bracket & aluminum strip for additional degrees of cutoff. Easy 5 minute field installation.

Finish: ● Bronze
○ White



Friendly Lighting® See pages 66-67 for complete WP2C and WP2FC fixtures



Catalog Numbers

Bronze	White
WP2SH70	WP2SH70W
WP2SH70QT	WP2SH70QTW
WP2SN100	WP2SN100W
WP2SH100	WP2SH100W
WP2SH100QT	WP2SH100QTW
WP2SN150	WP2SN150W
WP2SH150QT	WP2SH150QTW
WP2H70	WP2H70W
WP2H100QT	WP2H100QTW
WP2H125PSQ	WP2H125PSQW
WP2H150PSQ	WP2H150PSQW
WP2H150QT	WP2H150QTW
WP2H175QT	WP2H175QTW
WP2F26	WP2F26W
WP2F32	WP2F32W
WP2F42	WP2F42W
WP2F84	WP2F84W
/PC	/PC
/PCS	/PCS
/F	/F
/FF	/FF
/TP	/TP
GDWP2W	GDWP2W
GDWP2P	GDWP2P
SHC2A	SHC2W
SHR2A	SHR2W
/E1	/E1
/E2	/E2

Bronze	White
WP2CORK	WP2CORKW

Replacement Lamps	Replacement Ballasts
LHPS70	BHPSH70
LHPS70	BHPSH70QT
LHPS100	BHPSN100
LHPS100	BHPSH100
LHPS100	BHPSH100QT
LHPS150	BHPSN150
LHPS150	BHPSH150QT
LMH70	BMHN70
LMH100	BMHH100QT
LMH125PS	BMH125PSQ
LMH150PS	BMH150PSQ
LMH150	*BMHH175QT
LMH175	*BMHH175QT
LCFL26	BCFL42QT
LCFL32	BCFL42QT
LCFL42	BCFL42QT
LCFL42	BCFL2X42

* 175 watt Ballasts are used for 150 w MH lamp.

Dimensions

