

ALED Area Light mounts to 4" square steel poles at 15'-20'. 1 to 4 ALEDs can be mounted to each pole. IESNA Full Cutoff, Fully shielded optics. 5 year warranty.

Color: White

Weight: 3.3 lbs

Project:	Type:
Prepared By:	Date:

Driver Info		LED Info	
Type:	Constant Current	Watts:	13W
120V:	0.13A	Color Temp:	3000K (Warm)
208V:	0.08A	Color Accuracy:	87 CRI
240V:	0.07A	L70 Lifespan:	100,000
277V:	0.06A	Lumens:	662
Input Watts:	15W	Efficacy:	44 LPW
Efficiency:	87%		

Technical Specifications

Listings

UL Listing:

Suitable for wet locations

IESNA LM-79 & IESNA LM-80 Testing:

RAB LED luminaires have been tested by an independent laboratory in accordance with IESNA LM-79 and 80, and have received the Department of Energy "Lighting Facts" label.

Optical

Lumen Maintenance:

100,000-hour LED lifespan based on IES LM-80 results and TM-21 calculations.

Lumen Maintenance:

The LED will deliver 70% of its initial lumens at 100,000 hours of operation.

Fixture Efficacy:

44 Lumens per Watt

Construction

IES Classification:

The Type III distribution is ideal for roadway, general parking, and other area lighting applications where a larger pool of lighting is required. It is intended to be located near the side of the area, allowing the light to project outward and fill the area.

Housing:

Precision die cast aluminum housing, lens frame.

Gaskets:

High temperature silicone.

Effective Projected Area:

EPA = 0.2

Finish:

Our environmentally friendly polyester powder coatings are formulated for high-durability and long-lasting color, and contains no VOC or toxic heavy metals.

Green Technology:

RAB LEDs are Mercury and UV free.

Ambient Temperature:

Suitable for use in 50°C (122°F) ambient temperatures.

Cold Weather Starting:

The minimum starting temperature is -40°F/-40°C.

Other

Warranty:

RAB warrants that our LED products will be free from defects in materials and workmanship for a period of five (5) years from the date of delivery to the end user, including coverage of light output, color stability, driver performance and fixture finish.

Patents:

The design of the ALED is protected by patents pending in Canada, U.S., China and Taiwan.

California Title 24:

See ALED13/PC for a 2013 California Title 24 compliant model.

Equivalency:

The ALED13 is Equivalent in delivered lumens to a 50W Metal Halide Area Light.

HID Replacement Range:

The ALED13 can be used to replace 35 - 70W Metal Halide Area Lights based on delivered lumens.

Country of Origin:

Designed by RAB in New Jersey and assembled in the USA by RAB's IBEW Local 3 workers.

Buy American Act Compliant:

This product is a COTS item manufactured in the United States, and is compliant with the Buy American Act.

Recovery Act (ARRA) Compliant:

This product complies with the 52.225-21 "Required Use of American Iron, Steel, and Manufactured Goods-- Buy American Act-- Construction Materials (October 2010).

Trade Agreements Act Compliant:

This product is a COTS item manufactured in the United States, and is compliant with the Trade Agreements Act.

GSA Schedule:

Suitable in accordance with FAR Subpart 25.4.

LED Characteristics

Color Consistency:

3-step MacAdam Ellipse binning to achieve consistent fixture-to-fixture color.

Color Stability:

LED color temperature is warrantied to shift no more than 200K in CCT over a 5 year period.

Color Uniformity:

RAB's range of CCT (Correlated color temperature) follows the guidelines of the American National Standard for Specifications for the Chromaticity of Solid State Lighting (SSL) Products, ANSI C78.377-2008.

Technical Specifications (continued)

LED Characteristics

Color Temperature:

3000K

Color Accuracy:

87 CRI

Electrical

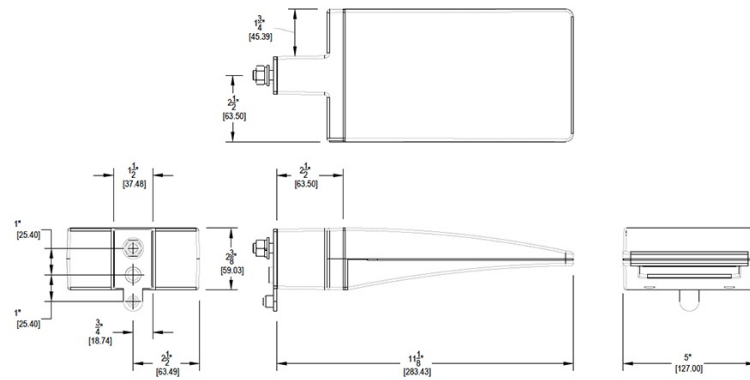
Driver:

Multi-chip 13W high output long life LED Driver
Constant Current, Class 2 100V - 277V, 50/60 Hz.

Surge Protection:

4KV

Dimensions



Features

- High output LED light engine
- Maintains 70% of initial lumens at 100,000 hours
- Weatherproof high temperature silicone gaskets
- Superior heat sinking with die cast aluminum housing and external fins

Ordering Matrix

Family	Watts	Color Temp	Finish	Photocell
ALED	20 = 20W 13 = 13W 10 = 10W	= Cool Y = Warm N = Neutral	= Bronze W = White	= No Photocell /PC = 120V Button /PC2 = 277V Button