

Use for DLED Retrofit downlight installations when the diameter of the cutout hole is larger than the baffle of the fixture.

Color: White

Weight: 0.0 lbs

| | |
|---------------------|--------------|
| Project: | Type: |
| Prepared By: | Date: |

Technical Specifications

Other

Description:

Use for DLED 6" Retrofit downlight installations when the diameter of the cutout hole is larger than the baffle of the fixture.

Country of Origin:

Designed by RAB in New Jersey and assembled in the USA by RAB's IBEW Local 3 workers.

Buy American Act Compliant:

This product is a COTS item manufactured in the United States, and is compliant with the Buy American Act.

Recovery Act (ARRA) Compliant:

This product complies with the 52.225-21 "Required Use of American Iron, Steel, and Manufactured Goods-- Buy American Act-- Construction Materials (October 2010).

Trade Agreements Act Compliant:

This product is a COTS item manufactured in the United States, and is compliant with the Trade Agreements Act.

GSA Schedule:

Suitable in accordance with FAR Subpart 25.4.

Construction

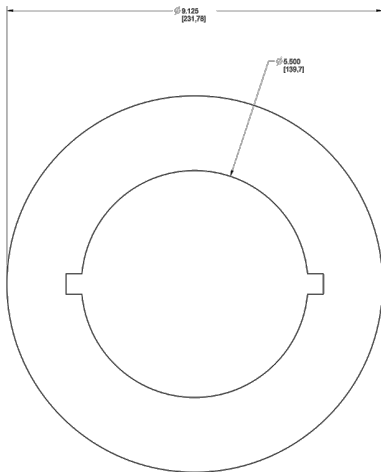
Material:

Stamped aluminum

Finish:

Our environmentally friendly polyester powder coatings are formulated for high-durability and long-lasting color, and contains no VOC or toxic heavy metals.

Dimensions



Features

Available in white finish

Fits 4" and 6" RAB DLED fixtures

GOOFRING DLED6



Ordering Matrix

| Family | Compatibility |
|----------|---------------|
| GOOFRING | |

DLED4 = Retrofit Downlight Round 4"

DLED6 = Retrofit Downlight Round 6"