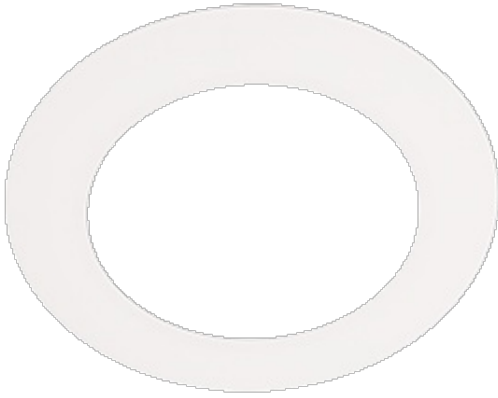


GOOFRING DLED4



Use for DLED Retrofit downlight installations when the diameter of the cutout hole is larger than the baffle of the fixture.

Color: White

Weight: 0.0 lbs

Project:

Type:

Prepared By:

Date:

Technical Specifications

Other

Description:

Use for DLED 4" Retrofit downlight installations when the diameter of the cutout hole is larger than the baffle of the fixture.

Country of Origin:

Designed by RAB in New Jersey and assembled in the USA by RAB's IBEW Local 3 workers.

Buy American Act Compliant:

This product is a COTS item manufactured in the United States, and is compliant with the Buy American Act.

Recovery Act (ARRA) Compliant:

This product complies with the 52.225-21 "Required Use of American Iron, Steel, and Manufactured Goods-- Buy American Act-- Construction Materials (October 2010).

Trade Agreements Act Compliant:

This product is a COTS item manufactured in the United States, and is compliant with the Trade Agreements Act.

GSA Schedule:

Suitable in accordance with FAR Subpart 25.4.

Construction

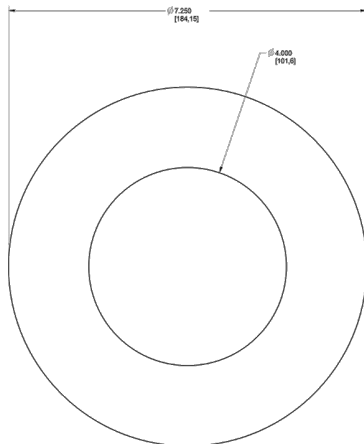
Material:

Stamped aluminum

Finish:

Our environmentally friendly polyester powder coatings are formulated for high-durability and long-lasting color, and contains no VOC or toxic heavy metals.

Dimensions



Features

Available in white finish

Fits 4" and 6" RAB DLED fixtures

GOOFRING DLED4



Ordering Matrix

Family	Compatibility
GOOFRING	

DLED4 = Retrofit Downlight Round 4"

DLED6 = Retrofit Downlight Round 6"