



TRAC-MASTER®

Classics

Project: _____

Fixture Type: _____

Location: _____

Contact/Phone: _____

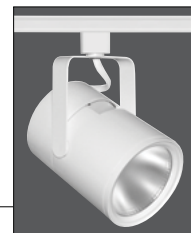
34W FLAT BACK CYLINDER LED



T285L

PRODUCT DESCRIPTION

With its integral driver, the cylindrical aesthetic of the T285L Series offers the simplest of form factors. It is designed with a unique, patent pending, precision optical system which produces uniform spot, flood or narrow flood distributions. The 34W T285L Series can deliver up to 3126 lumens, utilizing less than 1/3 of the energy of halogen equivalents and having a rated life of 50,000 hours. It is available in 2700K, 3000K, 3500K and 4000K color temperatures and 80 or 90 CRI versions. Optional SpectralWhite color/white enhancing versions offer CRI and Color Quality Scale (CQS) scores of 90+, rendering colors richly and making whites appear naturally brilliant. These fixtures also have an integral, bayonet-mounted optical system that enables quick conversion between beam spreads.



PRODUCT SPECIFICATIONS

Construction Die cast aluminum housing and vented concealed heat sink provides outstanding thermal management, yielding 70% average lumen maintenance at 50,000 hours of operation • Passively-cooled design – no moving parts to break or wear-out • Fashionable, elegant design complements any decor • Available in white, black or silver painted finishes.

LED High performance LED array provides outstanding reliability, performance and color quality/consistency • 2700K, 3000K, 3500K or 4000K white phosphor high performance LEDs • Chromaticity range within a 3-step MacAdam Ellipse • 80 CRI minimum on standard product • Optional high CRI versions offer 90 CRI minimum • Optional SpectralWhite color/white enhancing versions are available which make whites appear naturally brilliant and render colors more richly.

Driver Assembled into upper housing to visually integrate within fixture design • Insulating air gap between driver and LED light engine optimizes thermal operation • Provides quiet operation with or without dimming • Dimmable using high quality reverse phase ELV dimmers approved by Juno - see [T283L-T285L-DIM](#) • Solid state electronic, Class 2 compliant • Integral overcurrent and short circuit protection • Class B FCC Part 15 rated.

Reflector Precision designed custom optical system provides either spot, narrow flood or flood beam distributions • Patent pending, multi-step optical system ensures a properly color-mixed beam • Accessory optical assemblies available to quickly and easily convert from one beam distribution to another in the field.

Accessories Filters and lenses may only be installed with Accessory Holder, Snoot or Barn Doors (order separately) • Louver may only be installed with Accessory Holder or Snoot (order separately) • Accessory Holder, Snoot or Barn Doors are externally mounted and attach to fixture using three set screws • Up to two of any combination of filters, lenses and louver may be installed simultaneously.

Juno Universal Trac Adapter Compatible with Juno Trac-Master 1 or 2-circuit systems or Juno Trac-Lites system • Copper alloy contacts provide precise spring action – no arcing and will not take a set • True, positive electrical ground • On /off switch included • Patented embossed polarity arrows on bottom of adapter • Spring-loaded positive latch with embossed polarity arrows secures trac light to trac • Two-position power contact provided for two-circuit application.

Alternate TEK/HTEK Trac Adapter Compatible with either Juno TEK or HTEK trac systems • System specific and assembled to trac fixture • Integrally polarized construction to prevent reverse installation – only allows insertion in proper orientation • Rotary circuit selector enables simple switching between circuits • Integral on/off switch enables individual fixtures to be switched for servicing.

Aiming 360° horizontal coverage • Greater than 90° vertical aiming capability.

Labels UL and C-UL Listed • ENERGY STAR® Certified • DesignLights Consortium® Qualified.

Warranty 5-year limited warranty. Complete warranty terms located at: www.acuitybrands.com/CustomerResources/Terms_and_conditions.aspx. Specifications subject to change without notice.

ORDERING INFORMATION

Ordering Examples: T285L 30K 80CRI PDIM SP WH, T285L TEK 30K 80CRI PDIM SP BL

Series	Mounting Adapter Type	Color Temperature	Color Rendering Index	Dimming Compatibility	Distribution	Finish
T285L 34W Flat Back Cylinder LED	(Blank) Universal Trac Adapter	27K 2700K 30K 3000K	80CRI 80 CRI 90CRI 90 CRI	PDIM Phase Dimmable	SP Spot NFL Narrow Flood FL Flood	BL Black SL Silver WH White
	HTEK HTEK 277V Trac Adapter	35K 3500K 40K 4000K	SPW SpectralWhite (3000K & 3500K only)			
	TEK TEK 120V Trac Adapter					

Accessories						
HCLBL 469¹	Hexcell Louver - Black	DCCF 469^{1,2}	Dichroic Color Correction Filter	T5774BL	4 11/16" Dia. Barn Door Accessory - Black	
CCLBL 469¹	Cube Cell Louver - Black	UVF 469¹	UV Filter	T770BL	4 11/16" Dia. Accessory Holder - Black	
XBAFLBL 469¹	Cross Baffle - Black	DIFF 469¹	Diffusion Lens	T770SL	4 11/16" Dia. Accessory Holder - Silver	
SNOOTBL 469	Snoot - Black	SOLITE 469¹	Uniformity Lens (Solite)	T770WH	4 11/16" Dia. Accessory Holder - White	
EYEBROWBL 469¹	Eyebrow - Black	PRISM 469¹	Prismatic Spread Lens	TR10 SPT	Spot Optical Assembly	
CGF 469¹	Color Glass Filter	LSPREAD 469¹	Linear Spread Lens	TR10 NFLD	Narrow Flood Optical Assembly	
DGF 469¹	Dichroic Glass Filter	T40N³	Monopoint Canopy	TR10 FLD	Flood Optical Assembly	

See specification sheet [D1.2.2](#) for details.

Other accessories can be found on specification sheet [D1.2.0](#).

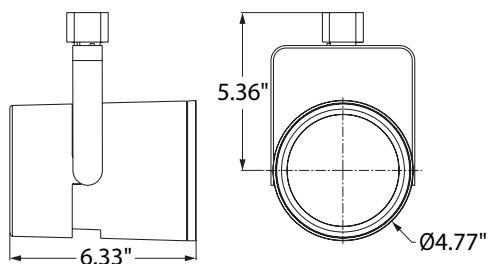
Notes:

- Accessory Holder, Snoot or Barn Doors required to install filters or lenses; Accessory Holder or Snoot required to install louver.
- DCCF 469 HAL2700 corrects 3000K color to approximately 2700K and 4000K color to approximately 3400K.
- Add finish code to complete catalog number (Example: T40N WH).



TRAC-MASTER®

Classics

34W FLAT BACK CYLINDER LED**T285L****DIMENSIONS****PERFORMANCE DATA¹**

Catalog Number	Voltage	Input Watts (Typical)	Lumens	Efficacy (LPW)	Rated Life (Hours)
T285L 27K 80CRI SP	120V	34	2714	80	50,000
T285L 27K 80CRI NFL	120V	34	2673	79	50,000
T285L 27K 80CRI FL	120V	34	2864	84	50,000
T285L 27K 90CRI SP	120V	34	2233	66	50,000
T285L 27K 90CRI NFL	120V	34	2199	65	50,000
T285L 27K 90CRI FL	120V	34	2356	69	50,000
T285L 30K 80CRI SP	120V	34	2811	83	50,000
T285L 30K 80CRI NFL	120V	34	2768	81	50,000
T285L 30K 80CRI FL	120V	34	2965	87	50,000
T285L 30K 90CRI SP	120V	34	2302	68	50,000
T285L 30K 90CRI NFL	120V	34	2267	67	50,000
T285L 30K 90CRI FL	120V	34	2429	71	50,000
T285L 30K SPW SP	120V	34	2456	72	50,000
T285L 30K SPW NFL	120V	34	2419	71	50,000
T285L 30K SPW FL	120V	34	2592	76	50,000
T285L 35K 80CRI SP	120V	34	2930	86	50,000
T285L 35K 80CRI NFL	120V	34	2885	85	50,000
T285L 35K 80CRI FL	120V	34	3091	91	50,000
T285L 35K 90CRI SP	120V	34	2318	70	50,000
T285L 35K 90CRI NFL	120V	34	2345	69	50,000
T285L 35K 90CRI FL	120V	34	2512	74	50,000
T285L 35K SPW SP	120V	34	2523	74	50,000
T285L 35K SPW NFL	120V	34	2485	73	50,000
T285L 35K SPW FL	120V	34	2662	78	50,000
T285L 40K 80CRI SP	120V	34	2963	87	50,000
T285L 40K 80CRI NFL	120V	34	2918	86	50,000
T285L 40K 80CRI FL	120V	34	3126	92	50,000
T285L 40K 90CRI SP	120V	34	2434	72	50,000
T285L 40K 90CRI NFL	120V	34	2397	71	50,000
T285L 40K 90CRI FL	120V	34	2569	76	50,000

¹Performance data, including Rated Life, is based on measurements of an individual fixture operating in a 25°C ambient.

ELECTRICAL DATA

Input Voltage	120V
Input Current (max.)	0.32A
Power Factor	>0.90
T.H.D.	<20%

TRAC-MASTER®

Classics

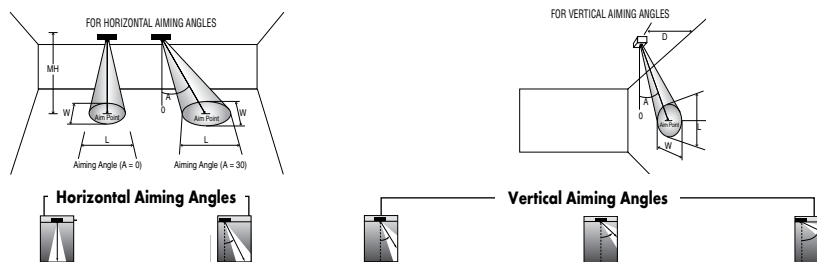
34W FLAT BACK CYLINDER LED

T285L

PHOTOMETRICS

CBCP • Centerbeam candlepower
FC • Footcandles at beam center (aim point)

In vertical aiming applications, aim point (X) is determined by dividing distance from the wall (D) by the tangent of the desired aim angle (A) (0.5774 for 30°, 1.0 for 45°, 1.732 for 60°).



Fixture	Beam Type	Beam Spread	Rated Life	CBCP	0°		30°			30°		45°				60°									
					MH	FC	L	W	FC	L	W	D	FC	X	L	W	FC	X	L	W	D	FC	X	L	W
T285L 34W LED, 30K, 80CRI Spot	S	14°	50000	24212	10	242	2.5	2.5	157	3.4	2.9	4	189	6.9	4.2	2.0	535	4.0	2.0	1.4	8	246	4.6	2.7	2.3
					12	168	3.0	3.0	109	4.0	3.5	6	84	10.4	6.3	3.0	238	6.0	3.1	2.1	10	157	5.8	3.4	2.9
					14	124	3.5	3.5	80	4.7	4.1	8	47	13.9	8.4	4.0	134	8.0	4.1	2.8	12	109	6.9	4.0	3.5
					16	95	4.0	4.0	61	5.4	4.6	10	30	17.3	10.5	5.0	86	10.0	5.1	3.5	14	80	8.1	4.7	4.1
					18	75	4.5	4.5	49	6.1	5.2	12	21	20.8	12.6	6.0	59	12.0	6.1	4.3	16	61	9.2	5.4	4.6
T285L 34W LED, 30K, 80CRI Narrow Flood	N	23°	50000	10869	6	302	2.5	2.5	196	3.4	2.9	3	151	5.2	5.7	2.5	427	3.0	2.6	1.8	6	196	3.5	3.4	2.9
					8	170	3.3	3.3	110	4.5	3.8	4	85	6.9	7.6	3.3	240	4.0	3.5	2.3	7	144	4.0	3.9	3.3
					10	109	4.1	4.1	71	5.6	4.8	5	54	8.7	9.5	4.1	154	5.0	4.3	2.9	8	110	4.6	4.5	3.8
					12	75	5.0	5.0	49	6.7	5.7	6	38	10.4	11.4	5.0	107	6.0	5.2	3.5	9	87	5.2	5.0	4.3
					14	55	5.8	5.8	36	7.8	6.7	7	28	12.1	13.3	5.8	78	7.0	6.1	4.1	10	71	5.8	5.6	4.8
T285L 34W LED, 30K, 80CRI Flood	F	40°	50000	4927	5	197	3.7	3.7	128	5.1	4.2	2	154	3.5	9.8	2.9	435	2.0	3.4	2.1	4	200	2.3	4.1	3.4
					6	137	4.4	4.4	89	6.1	5.1	3	68	5.2	14.7	4.4	194	3.0	5.1	3.1	5	128	2.9	5.1	4.2
					7	101	5.1	5.1	65	7.2	5.9	4	38	6.9	19.6	5.9	109	4.0	6.8	4.1	6	89	3.5	6.1	5.1
					8	77	5.9	5.9	50	8.2	6.8	5	25	8.7	24.5	7.3	70	5.0	8.5	5.2	7	65	4.0	7.2	5.9
					9	61	6.6	6.6	40	9.2	7.6	6	17	10.4	**	8.8	48	6.0	10.1	6.2	8	50	4.6	8.2	6.8

For 27K 80CRI fixtures, use 0.97 multiplier; for 27K 90CRI fixtures, use 0.79 multiplier; for 30K 90CRI fixtures, use 0.82 multiplier; for 30K SPW fixtures, use 0.87 multiplier; for 35K 80CRI fixtures, use 1.04 multiplier; for 35K 90CRI fixtures, use 0.85 multiplier; for 35K SPW fixtures, use 0.90 multiplier; for 40K 80CRI fixtures, use 1.05 multiplier; for 40K 90CRI fixtures, use 0.87 multiplier.

**Due to steep aiming angle, length of beam extends beyond 25'.