



# 6" IC 900 LUMEN LED DOWNLIGHT REMODEL

Project: \_\_\_\_\_

Fixture Type: \_\_\_\_\_

Location: \_\_\_\_\_

Contact/Phone: \_\_\_\_\_

IC22RLED (G4 09LM) RECESSED HOUSING



LENSED TRIMS

## PRODUCT DESCRIPTION

Dedicated LED, Air-Loc® remodel with integral light engine • Shallow housing allows for fit in 2 x 6 construction • IC remodel housing for remodel application where back side of ceiling is not accessible • Installs through an opening in the ceiling from below • Secured in place by factory installed remodel springs • Can be completely covered with insulation • When used with supplied ALG kit, stops infiltration and exfiltration of air, reducing heating and air cooling costs • LED housing is designed to provide 50,000 hours of life and is compatible with many standard Juno trims • 5 year limited warranty on LED components.



## ENVIRONMENTALLY FRIENDLY, ENERGY EFFICIENT

- No harmful ultraviolet or infrared wavelengths
- No lead or mercury
- Comparable light output to 75W PAR30 incandescent

## PRODUCT SPECIFICATIONS

**LED Light Engine** LED array integrated to thermally conductive housing provides uninterrupted heat transfer to ensure long life of the LED • Replaceable light engine mounts directly to housing and incorporates the latest generation, high lumen output LED array • LEDs are binned within a 3-step MacAdam Ellipse exceeding ENERGY STAR® requirements for superior fixture to fixture color uniformity • 2700K, 3000K, 3500K, or 4000K color temperatures available • 90 CRI minimum.

**Optical System** Computer-optimized reflector design with high reflectance white finish coupled with a high transmission diffusing lens conceals the LEDs and produces uniform aperture luminance • Wide flood distribution shipped as standard with optional optic accessories available and sold separately.

**Aesthetic Trim Selections** Compatible with wide selection of existing Juno trims • Shadow free, knife edge design blends seamlessly into ceiling. • Trims are wet location approved for covered ceiling applications.

**LED Driver** Choice of dedicated 120 volt (120) driver or universal voltage (MVOLT) driver that accommodates input voltages from 120-277 volts AC at 50/60Hz • Power factor > 0.9 at 120V input • 120 volt only driver is dimmable with the use of most incandescent, magnetic low voltage and electronic low voltage wall box dimmers • Universal voltage driver is dimmable with the use of most 0-10V wall box dimmers • For a list of compatible dimmers, see [JUNOICLED-DIM](#) • Mounted between the j-box and housing for easy access and cool operation.

**Life** Rated for 50,000 hours at 70% lumen maintenance.

**Labels** UL listed for U.S. and Canada wet locations (covered ceilings)  
• Union made • UL and cUL.

**Testing** All reports are based on published industry procedures; field performance may differ from laboratory performance.

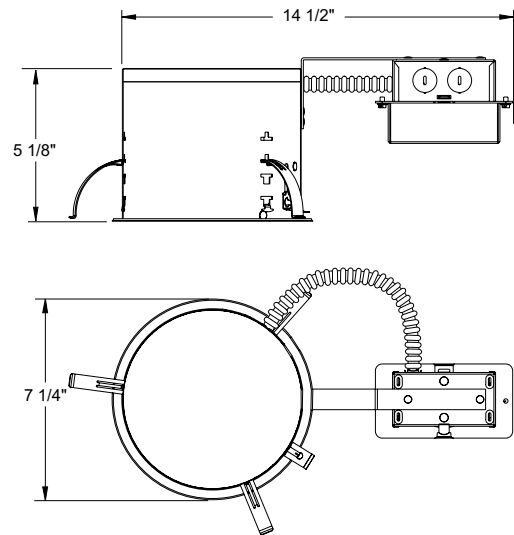
Specifications subject to change without notice.

## HOUSING FEATURES

**Housing** Designed for use in IC (insulated ceiling) or non-IC construction  
• Aluminum housing sealed for Air-Loc compliance when used with ALG kit  
• Remodel springs accommodate up to 1 7/8" ceiling thickness.

**Junction Box** Pre-wired junction box provided with (5) 1/2" knockouts, (4) knockouts for 12/2 or 14/2 NM cable and ground wire • Knockouts equipped with pryout slots • Quick connect electrical connectors supplied as standard for fast, secure installation.

## DIMENSIONS



6 3/4" CEILING CUTOUT

# 6" IC 900 LUMEN LED DOWNLIGHT REMODEL

## IC22RLED (G4 09LM) RECESSED HOUSING LENSED TRIMS

### ELECTRICAL DATA

Dedicated 120V Only Driver Option (120 FRPC)	
120V	
Input Power	11.5W (+/-5%)
Input Current	0.10A
Frequency	50/60Hz
EMI/RFI	FCC Title 47 CFR, Part 15, Class B (residential)
Minimum starting temp	-25°C

### ELECTRICAL DATA

	MVOLT EZ10 and EZ1		MVOLT ZT10 and ZT1	
	120V	277V	120V	277V
Input Power	10.8W (+/-5%)	11.8W (+/-5%)	10.8W (+/-5%)	11.8W (+/-5%)
Input Current	0.09A	0.05A	0.09A	0.05A
Frequency	50/60Hz	50/60Hz	50/60Hz	50/60Hz
EMI/RFI	FCC Title 47 CFR, Part 15, Class B (residential)	FCC Title 47 CFR, Part 15, Class B (residential)	FCC Title 47 CFR, Part 15, Class B (residential)	FCC Title 47 CFR, Part 15, Class B (residential)
Minimum starting temp	-20°C	-20°C	-20°C	-20°C

### ORDERING INFORMATION

Housing and trim can be ordered together or separate, but will always ship separately.









Example: IC22RLED G4 09LM 27K 90CRI 120 FRPC

Series	Generation	Lumens	Color Temperature	CRI	Voltage/Driver
IC22RLED 6" LED Remodel Downlight	G4 Generation 4	09LM 900 Nominal Lumens	27K 2700K 30K 3000K 35K 3500K 40K 4000K	90CRI 90+ CRI	120 FRPC 120V Forward/Reverse Phase Cut, 5% dim MVOLT ZT10 Multi-Volt (120-277), 0-10V, 10% dim MVOLT ZT1 Multi-Volt (120-277), 0-10V, 1% dim MVOLT EZ10 Multi-Volt (120-277), eldoLED 0-10V, 10% dim MVOLT EZ1 Multi-Volt (120-277), eldoLED 0-10V, 1% dim



A+ Capable options indicated by this color background

### Trim/Description

	<b>20 WH</b> <b>20 PW</b>	6" Lensed Albalite Trim - White 6" Lensed Albalite Trim - Plastic White
	<b>21 WH</b> <b>21 PW</b>	6" Lensed Drop Opal Trim - White 6" Lensed Drop Opal Trim - Plastic White
	<b>22 WH</b>	6" Lensed Fresnel Trim - White
	<b>239 WH 1*</b>	6" Lensed Frosted Lens Trim - White
	<b>242 WH</b> <b>242 SC</b> <b>242 ABZ</b>	6" Lensed Frosted Lens with Clear Center Trim - White 6" Lensed Frosted Lens with Clear Center Trim - Satin Chrome 6" Lensed Frosted Lens with Clear Center Trim - Classic Aged Bronze
	<b>243 WH*</b>	6" Decorative Swirled Etched Opal Glass Trim - White
	<b>2330 WWH*</b> <b>2330 BWH*</b>	6" Lensed Baffle with Regressed Frosted Dome Lens Trim - White Baffle, White Trim Ring 6" Lensed Baffle with Regressed Frosted Dome Lens Trim - Black Baffle, White Trim Ring
	<b>6101 WH*</b> <b>6101 SC*</b> <b>6101 ABZ*</b>	6" Lensed Beveled Frame with Frosted Dome Lens Trim - White 6" Lensed Beveled Frame with Frosted Dome Lens Trim - Satin Chrome 6" Lensed Beveled Frame with Frosted Dome Lens Trim - Classic Aged Bronze

### Accessories

Catalog Number	Description
LEDOPTICG3 MFL	Medium Flood Optic (50")
LEDOPTICG3 NFL	Narrow Flood Optic (37")
LEDOPTICG3 SP	Spot Optic (10")

To order, specify catalog number.

Trim Size: 2330 - 7 3/8" O.D.; 239, 242, 243 - 7 5/8" O.D.; 6101 - 7 3/4" O.D.; 20, 21, 22 - 8" O.D.  
Note: In Canada when insulation is present, Type IC fixtures must be used.

 JUNO IC housings meet IECC Energy Code requirements per ASTM E283.  
Air-Loc® rated trims are pre-gasketed for minimum air leakage with IC housings.

UL Listed for use in wet location.

\*Do not use reflector shipped with trim for LED housing.

# 6" IC 900 LUMEN LED DOWNLIGHT REMODEL

IC22RLED (G4 09LM) RECESSED HOUSING  
LENSED TRIMS

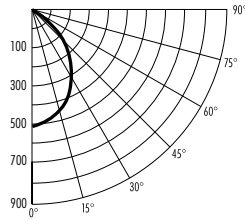
## PHOTOMETRICS

### PHOTOMETRIC REPORT

**Test Report #:** PT10111804R  
**Catalog No:** IC22RLED G4 09LM 35K  
with 239 WH Trim and standard wide  
flood optic

**Luminaire Spacing Criterion:** 1.02

**Luminaire LPW:** 70



### CANDLEPOWER DISTRIBUTION (Candelas)

Degrees	
<b>Vertical</b>	<b>0°</b>
0	510
5	504
15	463
25	381
35	259
45	151
55	89
65	53
75	30
85	6
90	0

Multiplier: 27K - 0.90  
30K - 0.97  
40K - 1.04

### AVERAGE INITIAL FOOTCANDLES

Multiple Units (Square Array, 60'x60' room)

Ceiling 80% Wall 50% Floor 20%

Spacing	RCR1	RCR3	RCR5
4.0'	54	43	36
5.0'	34	28	23
6.0'	24	19	16
7.0'	19	16	13
8.0'	15	12	10
9.0'	12	9	8
10.0'	9	7	6

### ZONAL LUMEN SUMMARY

Zone	Lumens	%Lamp	%Fixture
0 - 30°	351	N/A	43.6
0 - 40°	513	N/A	63.7
0 - 60°	713	N/A	88.5
0 - 90°	805	N/A	100.0

### INITIAL FOOTCANDLES (One Unit, 11.5W, 70.8° Beam)

Distance to Illuminated Plane (Feet)	Footcandles Beam Center	Beam Diameter
4	31.9	5.7'
6	14.2	8.5'
8	8.0	11.4'
10	5.1	14.2'

### LUMINANCE (Average cd/m<sup>2</sup>)

Degrees	Average Luminance
45	11720
55	8491
65	6874
75	6272
85	3921

Fixtures tested to IES recommended standard for solid state lighting per LM-79-08. Photometric performance on a single unit represents a baseline of performance for the fixture. Results may vary in the field.