



Project: _____

Fixture Type: _____

Location: _____

Contact/Phone: _____

6" IC 600 LUMEN LED DOWNLIGHT NEW CONSTRUCTION

IC22LED (G4 06LM) RECESSED HOUSING

**LENSED TRIMS**

PRODUCT DESCRIPTION

Dedicated LED, Air-Loc® sealed new construction housing with integral light engine

- Shallow housing allows for fit in 2 x 6 construction
- Can be completely covered with insulation
- Fully sealed housing stops infiltration and exfiltration of air, reducing heating and air cooling costs without the use of additional gaskets
- LED housing is designed to provide 50,000 hours of life and is compatible with many standard Juno trims
- 5 year limited warranty on LED components.

ENVIRONMENTALLY FRIENDLY, ENERGY EFFICIENT

- No harmful ultraviolet or infrared wavelengths
- No lead or mercury
- Comparable light output to 65W BR30 incandescent

PRODUCT SPECIFICATIONS

LED Light Engine LED array integrated to thermally conductive housing provides uninterrupted heat transfer to ensure long life of the LED

- Replaceable light engine mounts directly to housing and incorporates the latest generation, high lumen output LED array
- LEDs are binned within a 3-step MacAdam Ellipse exceeding ENERGY STAR® requirements for superior fixture to fixture color uniformity
- 2700K, 3000K, 3500K, or 4000K color temperatures available
- 90 CRI minimum.

Optical System Computer-optimized reflector design with high reflectance white finish coupled with a high transmission diffusing lens conceals the LEDs and produces uniform aperture luminance

- Wide flood distribution (>70°) shipped as standard with optional optic accessories available and sold separately.

Aesthetic Trim Selections Compatible with wide selection of existing Juno trims

- Shadow free, knife edge design blends seamlessly into ceiling.
- Trims are wet location approved for covered ceiling applications.

LED Driver Choice of dedicated 120 volt (120) driver or universal voltage (MVOLT) drivers that accommodate input voltages from 120-277 volts AC at 50/60Hz

- Power factor > 0.9 at 120V input
- 120 volt only driver is dimmable with the use of most incandescent, magnetic low voltage and electronic low voltage wall box dimmers
- Universal voltage drivers are dimmable with the use of most 0-10V wall box dimmers
- For a list of compatible dimmers, see [JUNOICLED-DIM](#)
- Mounted between the j-box and housing for easy access and cool operation.

Life Rated for 50,000 hours at 70% lumen maintenance.

Labels Certified to the high efficacy requirements of California T24 JA8-2016 with select trims

- UL listed for U.S. and Canada through-branch wiring, wet locations (covered ceilings)
- Union made
- UL and cUL.

Testing All reports are based on published industry procedures; field performance may differ from laboratory performance.

Product specifications subject to change without notice.

HOUSING FEATURES

Housing Designed for use in IC (insulated ceiling) or non-IC construction

- Aluminum housing sealed for Air-Loc® compliance
- Housing is vertically adjustable to accommodate up to a 2" ceiling thickness.

Junction Box Pre-wired junction box provided with (5) 1/2" and (1) 3/4" knockouts, (4) knockouts for 12/2 or 14/2 NM cable and ground wire

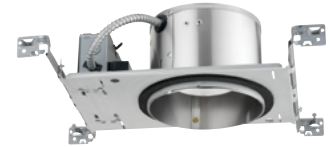
- UL listed and cUL listed for through-branch wiring, maximum 8 #12 branch circuit conductors
- Junction box provided with removable access plates
- Knockouts equipped with pryout slots
- Quick connect electrical connectors supplied as standard for fast, secure installation.

Mounting Frame 22-gauge die-formed galvanized steel mounting frame

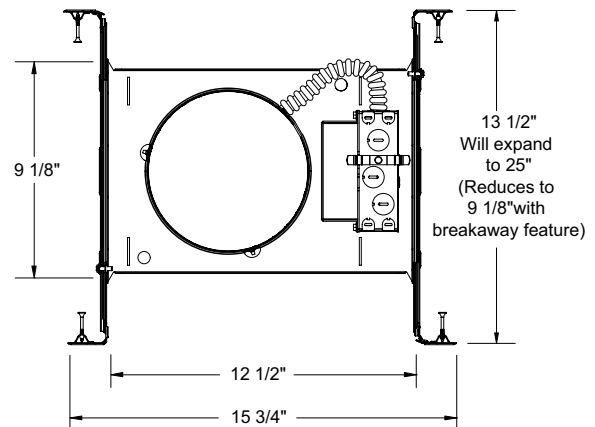
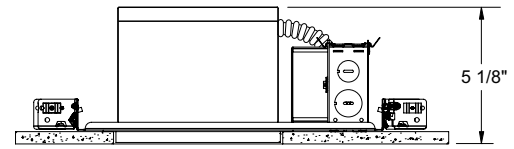
- Rough-in section (junction box, mounting frame, housing and bar hangers) fully assembled for ease of installation.

Real Nail 3 Bar Hangers Telescoping Real Nail® 3 system permits quick placement of housing anywhere within 24" O.C. joists or suspended ceilings

- Includes removable nail for repositioning of fixture in wood joist construction
- Integral T-bar notch and clip for suspended ceilings
- Design covered under US Patent D552,969.



DIMENSIONS



6 7/8" CEILING CUTOUT

6" IC 600 LUMEN LED DOWNLIGHT NEW CONSTRUCTION

IC22LED (G4 06LM) RECESSED HOUSING LENSED TRIMS

ELECTRICAL DATA

Dedicated 120V Only Driver Option (120 FRPC)

120V	
Input Power	8.6W (+/-5%)
Input Current	0.07A
Frequency	50/60Hz
EMI/RFI	FCC Title 47 CFR, Part 15, Class B (residential)
Minimum starting temp	-25°C

ELECTRICAL DATA

Universal Voltage

	MVOLT EZ10 and EZ1		MVOLT ZT10 and ZT1	
	120V	277V	120V	277V
Input Power	8.3W (+/-5%)	8.9W (+/-5%)	8.3W (+/-5%)	8.9W (+/-5%)
Input Current	0.07A	0.03A	0.07A	0.03A
Frequency	50/60Hz	50/60Hz	50/60Hz	50/60Hz
EMI/RFI	FCC Title 47 CFR, Part 15, Class B (residential)	FCC Title 47 CFR, Part 15, Class B (residential)	FCC Title 47 CFR, Part 15, Class B (residential)	FCC Title 47 CFR, Part 15, Class B (residential)
Minimum starting temp	-20°C	-20°C	-20°C	-20°C

ORDERING INFORMATION Housing and trim can be ordered together or separate, but will always ship separately.









Example: IC22LED G4 06LM 27K 90CRI 120 FRPC

Series	Generation	Lumens	Color Temperature	CRI	Voltage/Driver
IC22LED 6" LED New Construction Downlight	G4 Generation 4	06LM 600 Nominal Lumens	27K 2700K	90CRI 90+ CRI	120 FRPC 120V Forward/Reverse Phase Cut, 5% dim
			30K 3000K		MVOLT ZT10 Multi-Volt (120-277), 0-10V, 10% dim
			35K 3500K		MVOLT ZT1 Multi-Volt (120-277), 0-10V, 1% dim
			40K 4000K		MVOLT EZ10 Multi-Volt (120-277), eldoLED 0-10V, 10% dim
					MVOLT EZ1 Multi-Volt (120-277), eldoLED 0-10V, 1% dim



A+ Capable options indicated by this color background

Trim/Description

	20 WH 20 PW	Lensed Albalite Trim - White Trim Ring Lensed Albalite Trim - Plastic White Trim Ring
	21 WH 21 PW	Lensed Drop Opal Trim - White Trim Ring Lensed Drop Opal Trim - Plastic White Trim Ring
	22 WH	Lensed Fresnel Trim - White Trim Ring
	239 WH ¹	Frosted Lens Trim - White Trim Ring
	242 WH 242 SC 242 ABZ	Frosted Lens with Clear Center Trim - White Trim Ring Frosted Lens with Clear Center Trim - Satin Chrome Trim Ring Frosted Lens with Clear Center Trim - Classic Aged Bronze Trim Ring
	243 WH [*]	Decorative Swirled Etched Opal Glass Trim - White Trim Ring
	2330 WWH [*] 2330 BWH [*]	White Baffle Regress Frosted Dome Lens Trim - White Trim Ring Black Baffle Regress Frosted Dome Lens Trim - White Trim Ring
	6101 WH [*] 6101 SC [*] 6101 ABZ [*]	Lensed Beveled Frame Frosted Dome Lens Trim - White Trim Ring Lensed Beveled Frame Frosted Dome Lens Trim - Satin Chrome Trim Ring Lensed Beveled Frame Frosted Dome Lens Trim - Classic Aged Bronze Trim Ring

Accessories (ordered separately)

Catalog Number	Description
LEDOPTICG3 MFL	Medium Flood Optic (50°)
LEDOPTICG3 NFL	Narrow Flood Optic (37°)
LEDOPTICG3 SP	Spot Optic (10°)

To order, specify catalog number.

Trim Size: 2330 - 7 3/8" O.D.; 239, 242, 243 - 7 5/8" O.D.; 6101 - 7 3/4" O.D.; 20, 21, 22 - 8" O.D.
Note: In Canada when insulation is present, Type IC fixtures must be used.

 JUNO IC housings meet IECC Energy Code requirements per ASTM E283.
Air-Loc® rated trims are pre-gasketed for minimum air leakage with IC housings.

UL Listed for use in wet location.

¹ 120V and Multi-Volt: T24 @ 35K and 40K only

^{*} Do not use reflector shipped with trim for LED housing.

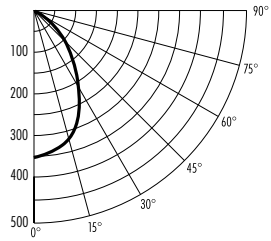
6" IC 600 LUMEN LED DOWNLIGHT NEW CONSTRUCTION

IC22LED (G4 06LM) RECESSED HOUSING
LENSED TRIMS

PHOTOMETRICS

PHOTOMETRIC REPORT

Test Report #: PT10111804R
Catalog No: IC22LED G4 06LM 35K with
239 WH Trim and standard wide flood optic
Luminaire Spacing Criterion: 1.02
Luminaire LPW: 65



CANDLEPOWER DISTRIBUTION (Candelas)

Degrees	Candelas
Vertical	0°
0	353
5	349
15	321
25	264
35	179
45	105
55	62
65	37
75	21
85	4
90	0

Multiplier: 27K - 0.89
30K - 0.94
40K - 1.03

AVERAGE INITIAL FOOTCANDLES

Multiple Units (Square Array, 60'x60' room)
Ceiling 80% Wall 50% Floor 20%

Spacing	RCR1	RCR3	RCR5
4.0'	37	30	25
5.0'	24	19	16
6.0'	17	13	11
7.0'	13	11	9
8.0'	11	9	7
9.0'	8	7	5
10.0'	6	5	4

ZONAL LUMEN SUMMARY

Zone	Lumens	%Lamp	%Fixture
0 - 30°	243	N/A	43.6
0 - 40°	355	N/A	63.7
0 - 60°	493	N/A	88.5
0 - 90°	557	N/A	100.0

INITIAL FOOTCANDLES (One Unit, 8.6W, 70.8° Beam)

Distance to Illuminated Plane (Feet)	Footcandles Beam Center	Beam Diameter
4	22.1	5.7'
6	9.8	8.5'
8	5.5	11.4'
10	3.5	14.2'

LUMINANCE (Average cd/m²)

Degrees	Average Luminance
45	8114
55	5878
65	4759
75	4342
85	2715

Fixtures tested to IES recommended standard for solid state lighting per LM-79-08. Photometric performance on a single unit represents a baseline of performance for the fixture. Results may vary in the field.