



5" IC 900 LUMEN LED DOWNLIGHT REMODEL

IC2ORLED (G4 09LM), RECESSED HOUSING
LENSED TRIMS



Project: _____

Fixture Type: _____

Location: _____

Contact/Phone: _____

PRODUCT DESCRIPTION

Dedicated LED, Air-Loc® remodel housing with integral light engine

- Shallow housing allows for fit in 2 x 6 construction
- IC remodel housing for remodel application where back side of ceiling is not accessible
- Installs through an opening in the ceiling from below
- Secured in place by factory installed remodel springs
- Can be completely covered with insulation
- When used with supplied ALG kit, stops infiltration and exfiltration of air, reducing heating and air cooling costs
- LED housing is designed to provide 50,000 hours of life and is compatible with many standard Juno trims
- 5 year limited warranty on LED components.

ENVIRONMENTALLY FRIENDLY, ENERGY EFFICIENT

- No harmful ultraviolet or infrared wavelengths
- No lead or mercury
- Comparable light output to 75W PAR30 incandescent

PRODUCT SPECIFICATIONS

LED Light Engine LED array integrated to thermally conductive housing provides uninterrupted heat transfer to ensure long life of the LED

- Replaceable light engine mounts directly to housing and incorporates the latest generation, high lumen output LED array
- LEDs are binned within a 3-step MacAdam Ellipse exceeding ENERGY STAR® requirements for superior fixture to fixture color uniformity
- 2700K, 3000K, 3500K, or 4000K color temperatures available
- 90 CRI minimum.

Optical System Computer-optimized reflector design with high reflectance white finish coupled with a high transmission diffusing lens conceals the LEDs and produces uniform aperture luminance

- Wide flood (>70°) distribution shipped as standard with optional optic accessories available and sold separately.

Aesthetic Trim Selections Compatible with wide selection of existing Juno trims

- Shadow free, knife edge design blends seamlessly into ceiling
- Trims are wet location approved for covered applications.

LED Driver Choice of dedicated 120 (120) volt driver or universal voltage (MVOLT) drivers that accommodate input voltages from 120-277 volts AC at 50/60Hz

- Power factor > 0.9 at 120V input
- 120 volt only driver is dimmable with the use of most incandescent, magnetic low voltage and electronic low voltage wall box dimmers
- Universal voltage drivers are dimmable with the use of most 0-10V wall box dimmers
- For a list of compatible dimmers, see [JUNOICLED-DIM](#)
- Mounted between the j-box and housing for easy access and cool operation.

Life Rated for 50,000 hours at 70% lumen maintenance.

Labels UL listed for U.S. and Canada wet locations (covered ceilings)

- Union made
- UL and cUL.

Testing All reports are based on published industry procedures; field performance may differ from laboratory performance.

Specifications subject to change without notice.

HOUSING FEATURES

Housing Designed for use in IC (insulated ceiling) or non-IC construction

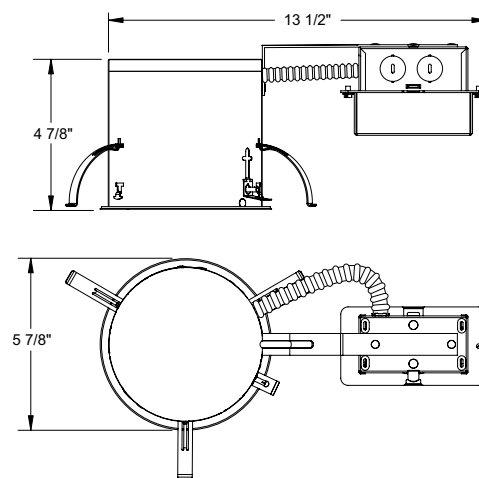
- Aluminum housing sealed for Air-Loc® compliance when used with ALG kit
- Remodel springs accommodate up to 1 1/8" ceiling thickness.

Junction Box Pre-wired junction box provided with (5) 1/2" knockouts, (4) knockouts for 12/2 or 14/2 NM cable and ground wire

- Knockouts equipped with pryout slots
- Quick connect electrical connectors supplied as standard for fast, secure installation.



DIMENSIONS



5 1/2" CEILING CUTOUT

5" IC 900 LUMEN LED DOWNLIGHT REMODEL

IC20RLED (G4 09LM), RECESSED HOUSING
LENSED TRIMS

ELECTRICAL DATA

Dedicated 120V Only Driver Option (120 FRPC)

120V	
Input Power	11.5W (+/-5%)
Input Current	0.10A
Frequency	50/60Hz
EMI/RFI	FCC Title 47 CFR, Part 15, Class B (residential)
Minimum starting temp	-25°C

ELECTRICAL DATA

Universal Voltage

	MVOLT EZ10 and EZ1		MVOLT ZT10 and ZT1	
	120V	277V	120V	277V
Input Power	10.8W (+/-5%)	11.8W (+/-5%)	10.8W (+/-5%)	11.8W (+/-5%)
Input Current	0.09A	0.05A	0.09A	0.05A
Frequency	50/60Hz	50/60Hz	50/60Hz	50/60Hz
EMI/RFI	FCC Title 47 CFR, Part 15, Class B (residential)	FCC Title 47 CFR, Part 15, Class B (residential)	FCC Title 47 CFR, Part 15, Class B (residential)	FCC Title 47 CFR, Part 15, Class B (residential)
Minimum starting temp	-20°C	-20°C	-20°C	-20°C

ORDERING INFORMATION

Housing and trim can be ordered together or separate, but will always ship separately.

Example: IC20RLED G4 09LM 30K 90CRI 120 FRPC

Series	Generation	Lumens	Color Temperature	CRI	Voltage/Driver
IC20RLED 5" LED IC Remodel Downlight	G4 Generation 4	09LM 900 Nominal Lumens	27K 2700K	90CRI 90+ CRI	120 FRPC 120V Forward/Reverse Phase Cut, 5% dim
			30K 3000K		MVOLT ZT10 Multi-Volt (120-277), 0-10V, 10% dim
			35K 3500K		MVOLT ZT1 Multi-Volt (120-277), 0-10V, 1% dim
			40K 4000K		MVOLT EZ10 Multi-Volt (120-277), eidoLED 0-10V, 10% dim
					MVOLT EZ1 Multi-Volt (120-277), eidoLED 0-10V, 1% dim



A+ Capable options indicated
by this color background

Trim/Description



- 210N WH *** 5" Lensed Flat Glass Shower Trim - White
- 210N SC *** 5" Lensed Flat Glass Shower Trim - Satin Chrome
- 210N ABZ *** 5" Lensed Flat Glass Shower Trim - Classic Aged Bronze



- 212N WH *** 5" Lensed Frosted Lens with Clear Center Trim - White
- 212N SC *** 5" Lensed Frosted Lens with Clear Center Trim - Satin Chrome
- 212N ABZ** 5" Lensed Frosted Lens with Clear Center Trim - Classic Aged Bronze



- 2130 WWH *** 5" Lensed Baffle with Regressed Frosted Dome Lens Trim - White Baffle, White Trim Ring
- 2130 BWH *** 5" Lensed Baffle with Regressed Frosted Dome Lens Trim - Black Baffle, Black Trim Ring



- 5101 ABZ *** 5" Lensed Beveled Frame with Frosted Dome Lens Trim - Classic Aged Bronze
- 5101 SC *** 5" Lensed Beveled Frame with Frosted Dome Lens Trim - Satin Chrome
- 5101 WH *** 5" Lensed Beveled Frame with Frosted Dome Lens Trim - White

UL Listed for use in wet location.

* Do not use reflector shipped with trim for LED housing.

Trim Size: 210, 212, 2130 - 6 1/4" O.D.; 5101 - 6 1/2" O.D.

Note: In Canada when insulation is present, Type IC fixtures must be used.

Air-LOC JUNO IC housings meet IECC Energy Code requirements per ASTM E283.

Air-LOC® rated trims are pre-gasketed for minimum air leakage with IC housings.

Accessories (ordered separately)

Catalog Number	Description
LEDOPTICG3 MFL	Medium Flood Optic (50°)
LEDOPTICG3 NFL	Narrow Flood Optic (37°)
LEDOPTICG3 SP	Spot Optic (10°)

To order, specify catalog number.

5" IC 900 LUMEN LED DOWNLIGHT REMODEL

IC20RLED (G4 09LM), RECESSED HOUSING
LENSED TRIMS

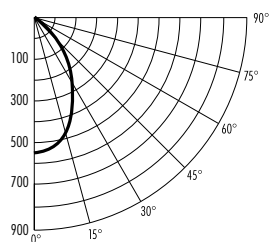
PHOTOMETRIC REPORT

Test Report #: PT10112502R

Catalog No: IC20RLED G4 09LM 35K
with 210 WH Trim
and standard wide flood optic

Luminaire Spacing Criterion: 0.92

Luminaire LPW: 56



CANDLEPOWER DISTRIBUTION (Candelas)

Degrees	
Vertical	0°
0	562
5	553
15	494
25	364
35	195
45	95
55	50
65	27
75	14
85	3
90	0
Multiplier: 27K - 0.90	
30K - 0.97	
40K - 1.04	

AVERAGE INITIAL FOOTCANDLES

Multiple Units (Square Array, 60'x60' room)

Ceiling 80% Wall 50% Floor 20%

Spacing	RCR1	RCR3	RCR5
4.0'	44	36	31
5.0'	28	23	20
6.0'	19	16	14
7.0'	16	13	11
8.0'	12	10	9
9.0'	10	8	7
10.0'	7	6	5

ZONAL LUMEN SUMMARY

Zone	Lumens	%Lamp	%Fixture
0 - 30°	355	N/A	54.9
0 - 40°	479	N/A	74.1
0 - 60°	601	N/A	92.9
0 - 90°	647	N/A	100.0

INITIAL FOOTCANDLES

(One Unit, 11.5W, 59.6° Beam)

Distance to Illuminated Plane (Feet)	Footcandles Beam Center	Beam Diameter
4	35.1	4.6'
6	15.6	6.9'
8	8.8	9.2'
10	5.6	11.5'

LUMINANCE (Average cd/m²)

Degrees	Average Luminance
45	10593
55	6841
65	5064
75	4135
85	2728

Fixtures tested to IES recommended standard for solid state lighting per LM-79-08. Photometric performance on a single unit represents a baseline of performance for the fixture. Results may vary in the field.