



5" IC 600 LUMEN LED DOWNLIGHT REMODEL

IC2ORLED (G4 06LM), RECESSED HOUSING
LENSED TRIMS



Project: _____

Fixture Type: _____

Location: _____

Contact/Phone: _____

PRODUCT DESCRIPTION

Dedicated LED, Air-Loc® remodel housing with integral light engine

- Shallow housing allows for fit in 2 x 6 construction
- IC remodel housing for remodel application where back side of ceiling is not accessible
- Installs through an opening in the ceiling from below
- Secured in place by factory installed remodel springs
- Can be completely covered with insulation
- When used with supplied ALG kit, stops infiltration and exfiltration of air, reducing heating and air cooling costs
- LED housing is designed to provide 50,000 hours of life and is compatible with many standard Juno trims
- 5 year limited warranty on LED components.

ENVIRONMENTALLY FRIENDLY, ENERGY EFFICIENT

- No harmful ultraviolet or infrared wavelengths
- No lead or mercury
- Comparable light output to 65W BR30 incandescent

PRODUCT SPECIFICATIONS

LED Light Engine LED array integrated to one piece high purity aluminum, thermally conductive housing provides uninterrupted heat transfer to ensure long life of the LED

- Replaceable light engine mounts directly to housing and incorporates the latest generation, high lumen output LED array
- LEDs are binned within a 3-step MacAdam Ellipse exceeding ENERGY STAR® requirements for superior fixture to fixture color uniformity
- 2700K, 3000K, 3500K, or 4000K color temperatures available
- 90 CRI minimum.

Optical System Computer-optimized reflector design with high reflectance white finish coupled with a high transmission diffusing lens conceals the LEDs and produces uniform aperture luminance

- Wide flood (>70°) distribution shipped as standard with optional optic accessories available and sold separately.

Aesthetic Trim Selections Compatible with wide selection of existing Juno trims

- Shadow free, knife edge design blends seamlessly into ceiling.
- Trims are wet location approved for covered applications.

LED Driver Choice of dedicated 120 volt (120) driver or universal voltage (MVOLT) drivers that accommodate input voltages from 120-277 volts AC at 50/60Hz

- Power factor > 0.9 at 120V input
- 120 volt only driver is dimmable with the use of most incandescent, magnetic low voltage and electronic low voltage wall box dimmers
- Universal voltage drivers are dimmable with the use of most 0-10V wall box dimmers
- For a list of compatible dimmers, see [JUNOICLED-DIM](#)
- Mounted between the j-box and housing for easy access and cool operation.

Life Rated for 50,000 hours at 70% lumen maintenance.

Labels UL listed for U.S. and Canada wet locations (covered ceilings)

- Union made
- UL and cUL.

Testing All reports are based on published industry procedures; field performance may differ from laboratory performance.

Specifications subject to change without notice.

HOUSING FEATURES

Housing Designed for use in IC (insulated ceiling) or non-IC construction

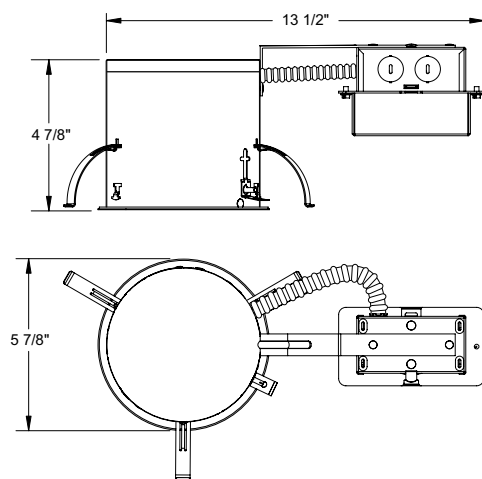
- Aluminum housing sealed for Air-Loc® compliance when used with ALG kit
- Remodel springs accommodate up to 1 1/8" ceiling thickness.

Junction Box Pre-wired junction box provided with (5) 1/2" knockouts, (4) knockouts for 12/2 or 14/2 NM cable and ground wire

- Knockouts equipped with pryout slots
- Quick connect electrical connectors supplied as standard for fast, secure installation.



DIMENSIONS



5 1/2" CEILING CUTOUT

5" IC 600 LUMEN LED DOWNLIGHT REMODEL

IC20RLED (G4 06LM), RECESSED HOUSING LENSED TRIMS

ELECTRICAL DATA

Dedicated 120V Only Driver Option (120 FRPC)

120V	
Input Power	8.6W (+/-5%)
Input Current	0.07A
Frequency	50/60Hz
EMI/RFI	FCC Title 47 CFR, Part 15, Class B (residential)
Minimum starting temp	-25°C

ELECTRICAL DATA

Universal Voltage

MVOLT EZ10 and EZ1		MVOLT ZT10 and ZT1	
120V	277V	120V	277V
Input Power	8.3W (+/-5%)	8.9W (+/-5%)	8.3W (+/-5%)
Input Current	0.07A	0.03A	0.07A
Frequency	50/60Hz	50/60Hz	50/60Hz
EMI/RFI	FCC Title 47 CFR, Part 15, Class B (residential)	FCC Title 47 CFR, Part 15, Class B (residential)	FCC Title 47 CFR, Part 15, Class B (residential)
Minimum starting temp	-20°C	-20°C	-20°C

ORDERING INFORMATION

Housing and trim can be ordered together or separate, but will always ship separately.

Example: IC20RLED G4 06LM 30K 90CRI 120 FRPC

Series		Generation	Lumens	Color Temperature	CRI	Voltage/Driver			
IC20RLED	5" LED IC Remodel Downlight	G4	600 Nominal Lumens	27K	2700K	90CRI	90+ CRI	120 FRPC	120V Forward/Reverse Phase Cut, 5% dim
				30K	3000K			MVOLT ZT10	Multi-Volt (120-277), 0-10V, 10% dim
				35K	3500K			MVOLT ZT1	Multi-Volt (120-277), 0-10V, 1% dim
				40K	4000K			MVOLT EZ10	Multi-Volt (120-277), eldoLED 0-10V, 10% dim
								MVOLT EZ1	Multi-Volt (120-277), eldoLED 0-10V, 1% dim



A+ Capable options indicated by this color background

Trim/Description

	210N WH *	5" Lensed Flat Glass Shower Trim - White
	210N SC *	5" Lensed Flat Glass Shower Trim - Satin Chrome
	210N ABZ *	5" Lensed Flat Glass Shower Trim - Classic Aged Bronze
	212N WH *	5" Lensed Frosted Lens with Clear Center Trim - White
	212N SC *	5" Lensed Frosted Lens with Clear Center Trim - Satin Chrome
	212N ABZ	5" Lensed Frosted Lens with Clear Center Trim - Classic Aged Bronze
	2130 WWH *	5" Lensed Baffle with Regressed Frosted Dome Lens Trim - White Baffle, White Trim Ring
	2130 BWH *	5" Lensed Baffle with Regressed Frosted Dome Lens Trim - Black Baffle, Black Trim Ring
	5101 ABZ *	5" Lensed Beveled Frame with Frosted Dome Lens Trim - Classic Aged Bronze
	5101 SC *	5" Lensed Beveled Frame with Frosted Dome Lens Trim - Satin Chrome
	5101 WH *	5" Lensed Beveled Frame with Frosted Dome Lens Trim - White

UL Listed for use in wet location.

* Do not use reflector shipped with trim for LED housing.

Trim Size: 210, 212, 2130 - 6 1/4" O.D.; 5101 - 6 1/2" O.D.

Note: In Canada when insulation is present, Type IC fixtures must be used.

JUNO IC housings meet IECC Energy Code requirements per ASTM E283.
Air-LoC® rated trims are pre-gasketed for minimum air leakage with IC housings.

Accessories (ordered separately)

Catalog Number	Description
LEDOPTICG3 MFL	Medium Flood Optic (50°)
LEDOPTICG3 NFL	Narrow Flood Optic (37°)
LEDOPTICG3 SP	Spot Optic (10°)

To order, specify catalog number.

5" IC 600 LUMEN LED DOWNLIGHT REMODEL

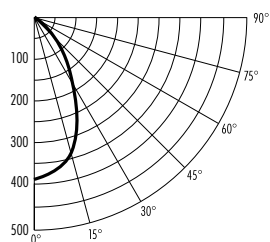
IC2ORLED (G4 06LM), RECESSED HOUSING
LENSED TRIMS

PHOTOMETRIC REPORT

Test Report #: PT10112502R
Catalog No: IC2ORLED G4 06LM 35K
with 210 WH Trim
and standard wide flood optic

Luminaire Spacing Criterion: 0.92

Luminaire LPW: 52



CANDLEPOWER DISTRIBUTION (Candelas)

Degrees	
Vertical	0°
0	391
5	384
15	343
25	253
35	135
45	66
55	35
65	19
75	9
85	2
90	0
Multiplier: 27K - 0.89	
30K - 0.94	
40K - 1.03	

AVERAGE INITIAL FOOTCANDLES

Multiple Units (Square Array, 60'x60' room)

Ceiling 80% Wall 50% Floor 20%

Spacing	RCR1	RCR3	RCR5
4.0'	33	28	23
5.0'	21	18	15
6.0'	15	12	10
7.0'	12	10	8
8.0'	10	8	7
9.0'	7	6	5
10.0'	5	4	4

ZONAL LUMEN SUMMARY

Zone	Lumens	%Lamp	%Fixture
0 - 30°	247	29.9	54.9
0 - 40°	333	40.1	74.1
0 - 60°	418	49.9	92.9
0 - 90°	450	53.7	100.0

INITIAL FOOTCANDLES

(One Unit, 8.6W, 59.6° Beam)

Distance to Illuminated Plane (Feet)	Footcandles Beam Center	Beam Diameter
4	24.4	4.6'
6	10.9	6.9'
8	6.1	9.2'
10	3.9	11.5'

LUMINANCE (Average cd/m²)

Degrees	Average Luminance
45	7366
55	4757
65	3521
75	2875
85	1897

Fixtures tested to IES recommended standard for solid state lighting per LM-79-08. Photometric performance on a single unit represents a baseline of performance for the fixture. Results may vary in the field.