



# 5" IC 600 LUMEN LED DOWNLIGHT REMODEL

Project: \_\_\_\_\_

Fixture Type: \_\_\_\_\_

Location: \_\_\_\_\_

Contact/Phone: \_\_\_\_\_

IC2ORLED (G4 06LM), RECESSED HOUSING



**HYPERBOLIC TRIMS**

## PRODUCT DESCRIPTION

Dedicated LED, Air-Loc® remodel housing with integral light engine

- Shallow housing allows for fit in 2 x 6 construction
- IC remodel housing for remodel application where back side of ceiling is not accessible
- Installs through an opening in the ceiling from below
- Secured in place by factory installed remodel springs
- Can be completely covered with insulation
- When used with supplied ALG kit, stops infiltration and exfiltration of air, reducing heating and air cooling costs
- LED housing is designed to provide 50,000 hours of life and is compatible with many standard Juno trims
- 5 year limited warranty on LED components.

## ENVIRONMENTALLY FRIENDLY, ENERGY EFFICIENT

- No harmful ultraviolet or infrared wavelengths
- No lead or mercury
- Comparable light output to 65W BR30 incandescent

## PRODUCT SPECIFICATIONS

**LED Light Engine** LED array integrated to thermally conductive housing provides uninterrupted heat transfer to ensure long life of the LED

- Replaceable light engine mounts directly to housing and incorporates the latest generation, high lumen output LED array
- LEDs are binned within a 3-step MacAdam Ellipse exceeding ENERGY STAR® requirements for superior fixture to fixture color uniformity
- 2700K, 3000K, 3500K, or 4000K color temperatures available
- 90 CRI minimum.

**Hyperbolic Optical System** Unique hyperbolic reflector shape optimized for small, directional LED source provides unique aperture appearance with reduced brightness

- NMC™ nano mixing chamber (provided with trim) with high reflectance white finish coupled with a high transmission diffusing lens conceals the LED and integrates with the hyperbolic trim to create a low glare, efficient system producing over 600 lumens using less than 9W\*.

**Aesthetic Trim Selections** Patent pending hyperbolic reflector available in clear Alzak®, wheat haze, black Alzak® and white

- Shadow free, knife edge design blends seamlessly into ceiling
- Installs with torsion springs.

**LED Driver** Choice of dedicated 120 volt (120) driver or universal voltage (MVOLT) drivers that accommodate input voltages from 120-277 volts AC at 50/60Hz

- Power factor > 0.9 at 120V input
- 120 volt only driver is dimmable with the use of most incandescent, magnetic low voltage and electronic low voltage wall box dimmers
- Universal voltage drivers are dimmable with the use of most 0-10V wall box dimmers
- For a list of compatible dimmers, see [JUNOICLED-DIM](#)
- Mounted between the j-box and housing for easy access and cool operation.

**Life** Rated for 50,000 hours at 70% lumen maintenance.

**Labels** ENERGY STAR® Certified when used with select trims

- Certified to the high efficacy requirements of California T24 JA8-2016 with select trims
- UL listed for U.S. and Canada through-branch wiring, damp locations
- Union made
- UL and cUL.

**Testing** All reports are based on published industry procedures; field performance may differ from laboratory performance.

Specifications subject to change without notice.

## HOUSING FEATURES

**Housing** Designed for use in IC (insulated ceiling) or non-IC construction

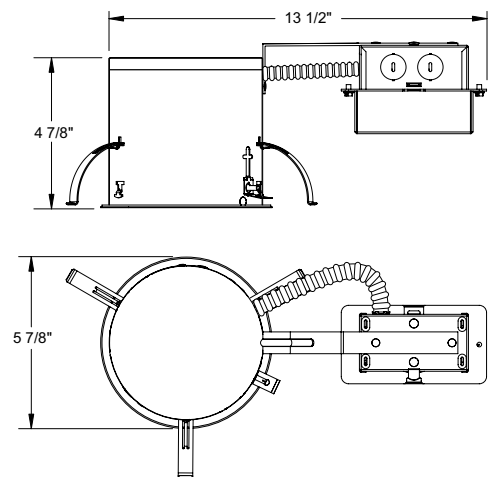
- Aluminum housing sealed for Air-Loc® compliance when used with ALG kit
- Remodel springs accommodate up to 1 1/8" ceiling thickness.

**Junction Box** Pre-wired junction box provided with (5) 1/2" knockouts, (4) knockouts for 12/2 or 14/2 NM cable and ground wire

- Knockouts equipped with pryout slots
- Quick connect electrical connectors supplied as standard for fast, secure installation.



## DIMENSIONS



5 1/2" CEILING CUTOUT

\* Nominal input wattage @ 120-volt operation with dedicated 120V driver under stable operating conditions.

# 5" IC 600 LUMEN LED DOWNLIGHT REMODEL

IC20RLED (G4 06LM), RECESSED HOUSING  
HYPERBOLIC TRIMS

## ELECTRICAL DATA

Dedicated 120V Only Driver Option (120 FRPC)

120V	
Input Power	8.6W (+/-5%)
Input Current	0.07A
Frequency	50/60Hz
EMI/RFI	FCC Title 47 CFR, Part 15, Class B (residential)
Minimum starting temp	-25°C

## ELECTRICAL DATA

Universal Voltage

MVOLT EZ10 and EZ1		MVOLT ZT10 and ZT1	
120V	277V	120V	277V
Input Power	8.3W (+/-5%)	8.9W (+/-5%)	8.3W (+/-5%)
Input Current	0.07A	0.03A	0.07A
Frequency	50/60Hz	50/60Hz	50/60Hz
EMI/RFI	FCC Title 47 CFR, Part 15, Class B (residential)	FCC Title 47 CFR, Part 15, Class B (residential)	FCC Title 47 CFR, Part 15, Class B (residential)
Minimum starting temp	-20°C	-20°C	-20°C

**ORDERING INFORMATION** Housing and trim can be ordered together or separate, but will always ship separately.

Example: IC20RLED G4 06LM 30K 90CRI 120 FRPC

Series		Generation	Lumens	Color Temperature	CRI	Voltage/Driver					
IC20RLED	5" LED IC Remodel Downlight	G4	Generation 4	06LM	600 Nominal Lumens	27K	2700K	90CRI	90+ CRI	120 FRPC	120V Forward/Reverse Phase Cut, 5% dim
										MVOLT ZT10	Multi-Volt (120-277), 0-10V, 10% dim
										MVOLT ZT1	Multi-Volt (120-277), 0-10V, 1% dim
										MVOLT EZ10	Multi-Volt (120-277), eldoLED 0-10V, 10% dim
										MVOLT EZ1	Multi-Volt (120-277), eldoLED 0-10V, 1% dim



A+ Capable options indicated  
by this color background

## Trim/Description



<b>204HYP2 BWH</b> <sup>1</sup>	5" Hyperbolic Cone Trim - Black Alzak® Cone, White Trim Ring
<b>204HYP2 CWH</b>	5" Hyperbolic Cone Trim - Clear Alzak® Cone, White Trim Ring
<b>204HYP2 HZWH</b>	5" Hyperbolic Cone Trim - Haze Cone, White Trim Ring
<b>204HYP2 WHZABZ</b> <sup>1</sup>	5" Hyperbolic Cone Trim - Wheat Haze Cone, Classic Aged Bronze Trim Ring
<b>204HYP2 WHZWH</b> <sup>1</sup>	5" Hyperbolic Cone Trim - Wheat Haze Cone, White Trim Ring
<b>204HYP2 WWH</b>	5" Hyperbolic Cone Trim - White Cone, White Trim Ring

<sup>1</sup> Not ENERGY STAR® Certified  
or T24 Certified

Trim Size: 6 1/4" O.D.

Alzak® is a registered trademark of Alcoa Corp.

Note: In Canada when insulation is present, Type IC fixtures must be used.

## Accessories (ordered separately)

Catalog Number	Description
<b>TR5 ABZ</b>	5" Trim Ring - Classic Aged Bronze
<b>TR5 BL</b>	5" Trim Ring - Black
<b>TR5 SC</b>	5" Trim Ring - Satin Chrome
<b>TR5 WH</b>	5" Trim Ring - White

To order, specify catalog number.

# 5" IC 600 LUMEN LED DOWNLIGHT REMODEL

IC20RLED (G4 06LM), RECESSED HOUSING  
HYPERBOLIC TRIMS

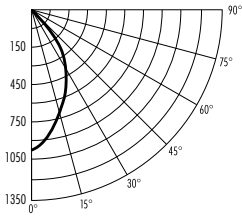
## PHOTOMETRIC REPORT

Test Report #: PT02141405

Catalog No: IC20RLED G4 06LM 35K  
with 204HYP2 HZWH Trim  
and standard nano mixing  
chamber

Luminaire Spacing Criterion: 0.76

Luminaire LPW: 82



## CANDLEPOWER DISTRIBUTION (Candelas)

Degrees	
Vertical	0°
0	976
5	933
15	722
25	498
35	240
45	43
55	0
65	0
75	0
85	0
90	0

Multiplier: 27K - 0.89  
30K - 0.94  
40K - 1.03

## AVERAGE INITIAL FOOTCANDLES

Multiple Units (Square Array, 60'x60' room)  
Ceiling 80% Wall 50% Floor 20%

Spacing	RCR1	RCR3	RCR5
4.0'	49	43	37
5.0'	31	27	24
6.0'	22	19	17
7.0'	18	15	13
8.0'	14	12	11
9.0'	11	9	8
10.0'	8	7	6

## ZONAL LUMEN SUMMARY

Zone	Lumens	%Lamp	%Fixture
0-30°	516	N/A	73.4
0-40°	665	N/A	94.6
0-60°	703	N/A	100.0
0-90°	703	N/A	100.0

## INITIAL FOOTCANDLES

(One Unit, 8.6W , 51.1° Beam)

Distance to Illuminated Plane (Feet)	Footcandles Beam Center	Beam Diameter
4	61.0	3.8'
6	27.1	5.7'
8	15.2	7.6'
10	9.8	9.6'

## LUMINANCE (Average cd/m²)

Degrees	Average Luminance
45	5726
55	0
65	0
75	0
85	0

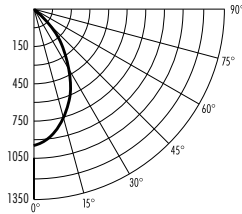
## PHOTOMETRIC REPORT

Test Report #: PT02141411

Catalog No: IC20RLED G4 06LM 35K  
with 204HYP2 CWH Trim  
and standard nano mixing  
chamber

Luminaire Spacing Criterion: 0.80

Luminaire LPW: 84



## CANDLEPOWER DISTRIBUTION (Candelas)

Degrees	
Vertical	0°
0	964
5	937
15	765
25	512
35	245
45	43
55	0
65	0
75	0
85	0
90	0

Multiplier: 27K - 0.89  
30K - 0.94  
40K - 1.03

## AVERAGE INITIAL FOOTCANDLES

Multiple Units (Square Array, 60'x60' room)  
Ceiling 80% Wall 50% Floor 20%

Spacing	RCR1	RCR3	RCR5
4.0'	50	44	38
5.0'	32	28	25
6.0'	22	19	17
7.0'	18	16	14
8.0'	14	12	11
9.0'	11	10	8
10.0'	8	7	6

## ZONAL LUMEN SUMMARY

Zone	Lumens	%Lamp	%Fixture
0-30°	534	N/A	73.9
0-40°	686	N/A	94.9
0-60°	723	N/A	100.0
0-90°	723	N/A	100.0

## INITIAL FOOTCANDLES

(One Unit, 8.6W , 52.8° Beam)

Distance to Illuminated Plane (Feet)	Footcandles Beam Center	Beam Diameter
4	60.3	4.0'
6	26.8	6.0'
8	15.1	7.9'
10	9.6	9.9'

## LUMINANCE (Average cd/m²)

Degrees	Average Luminance
45	5726
55	0
65	0
75	0
85	0