



Project: \_\_\_\_\_

Fixture Type: \_\_\_\_\_

Location: \_\_\_\_\_

Contact/Phone: \_\_\_\_\_



# 5" IC 900 LUMEN WARMDIM® LED DOWNLIGHT NEW CONSTRUCTION

IC20LED (WD G4 09LM), RECESSED HOUSING  
**WALL WASH TRIMS**

## PRODUCT DESCRIPTION

Dedicated LED, Air-Loc® sealed new construction housing with patented WarmDim® technology • LED color temperature warms while dimming to emulate the dimming performance of traditional incandescent light sources • Shallow housing allows for fit in 2 x 6 construction • Can be completely covered with insulation • Fully sealed housing stops infiltration and exfiltration of air, reducing heating and air cooling costs without the use of additional gaskets • LED housing is designed to provide 50,000 hours of life and is compatible with many standard Juno trims • 5 year limited warranty on LED components.

## ENVIRONMENTALLY FRIENDLY, ENERGY EFFICIENT

- No harmful ultraviolet or infrared wavelengths
- No lead or mercury
- Comparable light output to 75W PAR30 incandescent

## PRODUCT SPECIFICATIONS

**LED Light Engine** Proprietary patented micro processor controlled light engine emulates dimming performance of incandescent light source • Replaceable light engine integrated to thermally conductive housing provides uninterrupted heat transfer to ensure long life of the LEDs • 3000K color temperature at full lumen output • 90 CRI minimum throughout dimming range • Design covered under Patent US 8,710,754.

**Optical System** Painted white scoop is designed to work with computer-optimized reflector design to direct light toward wall for uniform illumination on vertical surfaces while concealing LED optic assembly and minimizing glare • LEDs are concealed by high transmission diffusing lens • Retention bar holds scoop assembly to trim • White or black baffle available.

**Aesthetic Trim Selections** Low profile scoop wall wash trim • Shadow free, knife edge design blends seamlessly into ceiling.

**LED Driver** Dedicated 120 volt driver • Power factor > 0.9 • Dimmable with the use of most incandescent, magnetic low voltage and electronic low voltage wall box dimmers • For a list of compatible dimmers, see [JUNOICLED-DIM](#) • Mounted between the j-box and housing for easy access and cool operation.

**Life** Rated for 50,000 hours at 70% lumen maintenance.

**Labels** UL listed for U.S. and Canada through-branch wiring, damp locations • Union made • UL and cUL.

**Testing** All reports are based on published industry procedures; field performance may differ from laboratory performance. Specifications subject to change without notice.

## HOUSING FEATURES

**Housing** Designed for use in IC (insulated ceiling) or non-IC construction • Aluminum housing sealed for Air-Loc® compliance • Housing is vertically adjustable to accommodate up to a 2" ceiling thickness.

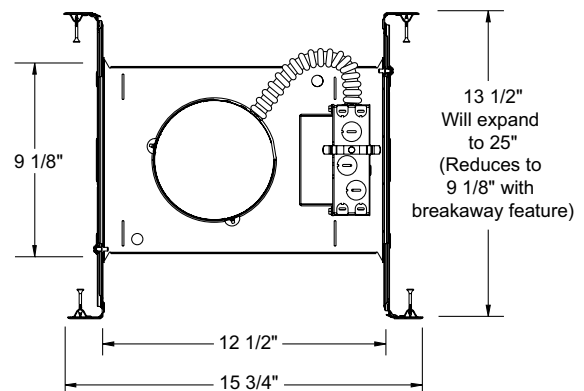
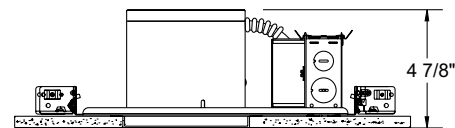
**Junction Box** Pre-wired junction box provided with (5) 1/2" and (1) 3/4" knockouts, (4) knockouts for 12/2 or 14/2 NM cable and ground wire • UL listed and cUL listed for through-branch wiring, maximum 8 #12 branch circuit conductors • Junction box provided with removable access plates • Knockouts equipped with pryout slots • Quick connect electrical connectors supplied as standard for fast, secure installation.

**Mounting Frame** 22-gauge die-formed galvanized steel mounting frame • Rough-in section (junction box, mounting frame, housing and bar hangers) fully assembled for ease of installation.

**Real Nail 3 Bar Hangers** Telescoping Real Nail® 3 system permits quick placement of housing anywhere within 24" O.C. joists or suspended ceilings • Includes removable nail for repositioning of fixture in wood joist construction • Integral T-bar notch and clip for suspended ceilings • Design covered under US Patent D552,969.



## DIMENSIONS

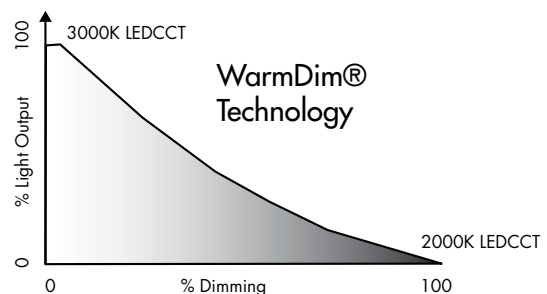


5 5/8" CEILING CUTOUT

## ELECTRICAL DATA

### Dedicated 120V Only Driver

120V	
Input Power	18.0W (+/-5%)
Input Current	0.15A
Frequency	50/60 Hz
EMI/RFI	FCC Title 47 CFR, Part 15 Class B (residential)
Minimum starting temp	-25°C



**MAINSTREAM  
DYNAMIC**  
BY ACUITY BRANDS®

# 5" IC 900 LUMEN WARMDIM® LED DOWNLIGHT NEW CONSTRUCTION

IC20LED (WD G4 09LM), RECESSED HOUSING  
WALL WASH TRIMS

**ORDERING INFORMATION** Housing and trim can be ordered together or separate, but will always ship separately.

Example: IC20LED WD G4 09LM 30K 90CRI 120 FRPC

Series	Dynamic Feature	Generation	Lumens	Color Temperature	CRI	Voltage	Driver
IC20LED 5" LED IC New Construction Downlight	WD Warm Dim	G4 Generation 4	09LM 900 Nominal Lumens	30K 3000K	90CRI 90+ CRI	120 120V	FRPC Forward/ Reverse Phase Cut

## Trim/Description



**213G3 WWH** 5" Wall Wash Scoop Trim - White Baffle, White Trim Ring

**213G3 BWH** 5" Wall Wash Scoop Trim - Black Baffle, White Trim Ring

Trim Size: 6 1/4" O.D.

Note: In Canada, when insulation is present, Type IC fixtures must be used

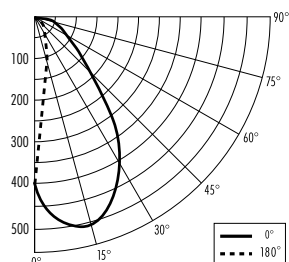
## PHOTOMETRIC REPORT

Test Report #: PT05140102

Catalog No: IC20LED WD G4 09LM 30K  
with 213G3 WWH Trim

Luminaire Spacing Criterion @ 90°: 1.04

Luminaire: 5" IC20LED WD G4 09LM Downlight,  
Scoop Type Wall Wash Trim



## CANDLEPOWER DISTRIBUTION (Candelas)

Degrees Vertical	0° Wall Wash	180° Downlight
0	404	404
5	475	290
10	507	187
15	514	127
20	499	99
25	469	80
30	416	65
35	332	53
40	232	43
45	159	35
50	122	32
55	99	28
60	85	21
65	74	15
70	64	9
75	52	4
80	33	0
85	18	0
90	5	0

## ZONAL LUMEN SUMMARY

Zone	Lumens	%Lamp	%Fixture
0 - 30°	261	N/A	45.5
0 - 40°	380	N/A	66.0
0 - 60°	508	N/A	88.3
0 - 90°	575	N/A	100.0
90 - 180°	0	N/A	0
0 - 180°	575	N/A	100.0

## LUMINANCE (Average cd/m²)

Degrees	Average 180° Downlight Luminance
45	21295
55	16317
65	16693
75	18978
85	19257

## FOOTCANDLES ON WALL FROM MULTIPLE FIXTURES

Fixture Distance to Wall		2'			3'		
Fixture Centers (spacing)		2'	2'	3'	3'	4'	4'
DISTANCE FROM CEILING	1'	17	17	17	14	10	13
	2'	19	19	19	14	12	14
	3'	21	21	21	16	13	16
	4'	23	23	23	17	16	17
	5'	21	22	21	15	15	15
	6'	18	18	18	13	13	13
	7'	15	15	15	11	11	11
	8'	13	13	13	9	9	9
	9'	10	10	10	7	8	7

\*For 213G3 BWH trim, use 0.84 multiplier.

\*Note: Multipliers are provided for estimating purposes only. Use IES photometric files for precise photometric information.