



# 5" IC 900 LUMEN WARMDIM® LED DOWNLIGHT NEW CONSTRUCTION

IC20LED (WD G4 09LM), RECESSED HOUSING  
LENSED TRIMS

Project: \_\_\_\_\_

Fixture Type: \_\_\_\_\_

Location: \_\_\_\_\_

Contact/Phone: \_\_\_\_\_

## PRODUCT DESCRIPTION

Dedicated LED, Air-Loc® sealed new construction housing with patented WarmDim® technology • LED color temperature warms while dimming to emulate the dimming performance of traditional incandescent light sources • Shallow housing allows for fit in 2 x 6 construction • Can be completely covered with insulation • Fully sealed housing stops infiltration and exfiltration of air, reducing heating and air cooling costs without the use of additional gaskets • LED housing is designed to provide 50,000 hours of life and is compatible with many standard Juno trims • 5 year limited warranty on LED components.

## ENVIRONMENTALLY FRIENDLY, ENERGY EFFICIENT

- No harmful ultraviolet or infrared wavelengths
- No lead or mercury
- Comparable light output to 75W PAR30 incandescent

## PRODUCT SPECIFICATIONS

**LED Light Engine** Proprietary patented micro processor controlled light engine emulates dimming performance of incandescent light source • Replaceable light engine integrated to thermally conductive housing provides uninterrupted heat transfer to ensure long life of the LEDs • 3000K color temperature at full lumen output • 90 CRI minimum throughout dimming range • Design covered under Patent US 8,710,754.

**Optical System** Computer-optimized reflector design with high reflectance white finish coupled with a high transmission diffusing lens conceals the LEDs and produces uniform aperture luminance • Wide flood (>70°) distribution shipped as standard with optional optic accessory available and sold separately.

**Aesthetic Trim Selections** Compatible with wide selection of existing Juno trims • Shadow free, knife edge design blends seamlessly into ceiling • Trims are wet location approved for covered applications.

**LED Driver** Dedicated 120 volt driver • Power factor > 0.9 • Dimmable with the use of most incandescent, magnetic low voltage and electronic low voltage wall box dimmers • For a list of compatible dimmers, see [JUNOICLED-DIM](#) • Mounted between the j-box and housing for easy access and cool operation.

**Life** Rated for 50,000 hours at 70% lumen maintenance.

**Labels** UL listed for U.S. and Canada through-branch wiring, damp locations • Union made • UL and cUL.

**Testing** All reports are based on published industry procedures; field performance may differ from laboratory performance. Specifications subject to change without notice.

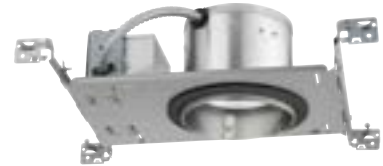
## HOUSING FEATURES

**Housing** Designed for use in IC (insulated ceiling) or non-IC construction • Aluminum housing sealed for Air-Loc® compliance • Housing is vertically adjustable to accommodate up to a 2" ceiling thickness.

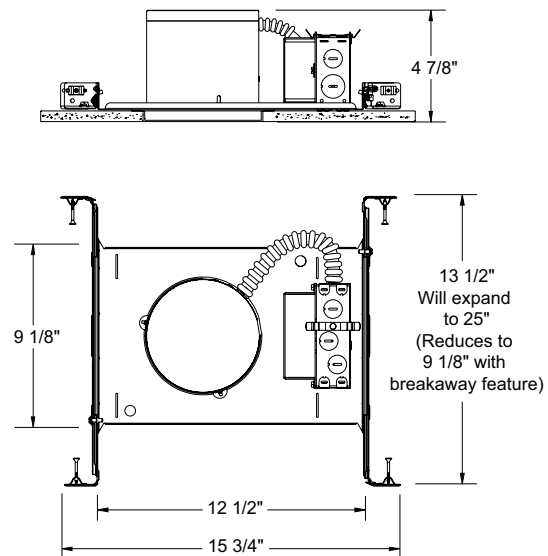
**Junction Box** Pre-wired junction box provided with (5) 1/2" and (1) 3/4" knockouts, (4) knockouts for 12/2 or 14/2 NM cable and ground wire • UL listed and cUL listed for through-branch wiring, maximum 8 #12 branch circuit conductors • Junction box provided with removable access plates • Knockouts equipped with pryout slots • Quick connect electrical connectors supplied as standard for fast, secure installation.

**Mounting Frame** 22-gauge die-formed galvanized steel mounting frame • Rough-in section (junction box, mounting frame, housing and bar hangers) fully assembled for ease of installation.

**Real Nail 3 Bar Hangers** Telescoping Real Nail® 3 system permits quick placement of housing anywhere within 24" O.C. joists or suspended ceilings • Includes removable nail for repositioning of fixture in wood joist construction • Integral T-bar notch and clip for suspended ceilings • Design covered under US Patent D552,969.



## DIMENSIONS

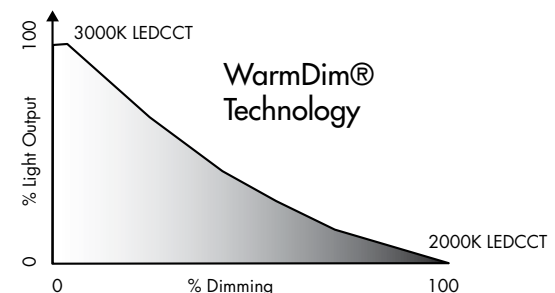


5 5/8" CEILING CUTOUT

## ELECTRICAL DATA

### Dedicated 120V Only Driver

120V	
Input Power	18.0W (+/-5%)
Input Current	0.15A
Frequency	50/60 Hz
EMI/RFI	FCC Title 47 CFR, Part 15 Class B (residential)
Minimum starting temp	-25°C



**MAINSTREAM  
DYNAMIC**  
BY ACUITY BRANDS®

# 5" IC 900 LUMEN WARMDIM® LED DOWNLIGHT NEW CONSTRUCTION

## IC20LED (WD G4 09LM), RECESSED HOUSING LENSED TRIMS

**ORDERING INFORMATION** Housing and trim can be ordered together or separate, but will always ship separately.

Example: **IC20LED WD G4 09LM 30K 90CRI 120 FRPC**

Series	Dynamic Feature	Generation	Lumens	Color Temperature	CRI	Voltage	Driver
<b>IC20LED</b> 5" LED IC New Construction Downlight	<b>WD</b> Warm Dim	<b>G4</b> Generation 4	<b>09LM</b> 900 Nominal Lumens	<b>30K</b> 3000K	<b>90CRI</b> 90+ CRI	<b>120</b> 120V	<b>FRPC</b> Forward/ Reverse Phase Cut

### Trim/Description



- 210N WH \*** 5" Lensed Flat Glass Shower Trim - White  
**210N SC \*** 5" Lensed Flat Glass Shower Trim - Satin Chrome  
**210N ABZ \*** 5" Lensed Flat Glass Shower Trim - Classic Aged Bronze



- 212N WH \*** 5" Lensed Frosted Lens with Clear Center Trim - White  
**212N SC \*** 5" Lensed Frosted Lens with Clear Center Trim - Satin Chrome  
**212N ABZ \*** 5" Lensed Frosted Lens with Clear Center Trim - Classic Aged Bronze



- 2130 WWH \*** 5" Lensed Baffle with Regressed Frosted Dome Lens Trim - White Baffle, White Trim Ring  
**2130 BWH \*** 5" Lensed Baffle with Regressed Frosted Dome Lens Trim - Black Baffle, Black Trim Ring



- 5101 ABZ \*** 5" Lensed Beveled Frame with Frosted Dome Lens Trim - Classic Aged Bronze  
**5101 SC \*** 5" Lensed Beveled Frame with Frosted Dome Lens Trim - Satin Chrome  
**5101 WH \*** 5" Lensed Beveled Frame with Frosted Dome Lens Trim - White

UL Listed for use in wet location.

\* Do not use reflector shipped with trim for LED housing.

Trim Size: 210, 212, 2130 - 6 1/4" O.D.; 5101 - 6 1/2" O.D.

Note: In Canada when insulation is present, Type IC fixtures must be used.

JUNO IC housings meet IECC Energy Code requirements per ASTM E283.

**Air-Loc** Air-Loc® rated trims are pre-gasketed for minimum air leakage with IC housings.

### Accessories (ordered separately)

Catalog Number	Description
<b>LEDOPTICG3 MFL</b>	Medium Flood Optic (50°)

To order, specify catalog number.

# 5" IC 900 LUMEN WARMDIM® LED DOWNLIGHT NEW CONSTRUCTION

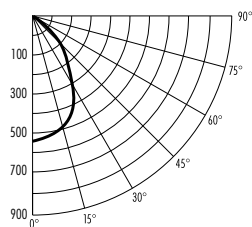
IC20LED (WD G4 09LM), RECESSED HOUSING  
LENSED TRIMS

## PHOTOMETRIC REPORT

Test Report #: PT05140101  
Catalog No: IC20LED WD G4 09LM 30K  
with 210 WH Trim and  
Standard Wide Flood Optic

Luminaire Spacing Criterion: 0.98

Luminaire LPW: 39



## CANDLEPOWER DISTRIBUTION (Candelas)

Degrees Vertical	0°
0	538
5	533
15	491
25	387
35	226
45	112
55	61
65	35
75	18
85	6
90	0

## AVERAGE INITIAL FOOTCANDLES

Multiple Units (Square Array, 60'x60' room)

Spacing	RCR1	RCR3	RCR5
4.0'	48	39	33
5.0'	31	25	21
6.0'	21	18	15
7.0'	17	14	12
8.0'	14	11	9
9.0'	10	9	7
10.0'	8	6	5

## ZONAL LUMEN SUMMARY

Zone	Lumens	%Lamp	%Fixture
0-30°	363	N/A	51.3
0-40°	505	N/A	71.3
0-60°	649	N/A	91.5
0-90°	709	N/A	100.0

## INITIAL FOOTCANDLES

(One Unit, 18W, 64.7° Beam)

Distance to Illuminated Plane (Feet)	Footcandles Beam Center	Beam Diameter
4	33.6	5.1'
6	14.9	7.6'
8	8.4	10.1'
10	5.4	12.7'

## LUMINANCE (Average cd/m²)

Degrees	Average Luminance
45	18727
55	12617
65	9725
75	8192
85	7610

Fixtures tested to IES recommended standard for solid state lighting per LM-79-08. Photometric performance on a single unit represents a baseline of performance for the fixture. Results may vary in the field.