



Project: \_\_\_\_\_

Fixture Type: \_\_\_\_\_

Location: \_\_\_\_\_

Contact/Phone: \_\_\_\_\_

# 5" IC 900 LUMEN LED DOWNLIGHT NEW CONSTRUCTION

IC20LED (G4 09LM), RECESSED HOUSING  
LENSED TRIMS



## PRODUCT DESCRIPTION

Dedicated LED, Air-Loc® sealed new construction housing with integral light engine • Shallow housing allows for fit in 2 x 6 construction • Can be completely covered with insulation • Fully sealed housing stops infiltration and exfiltration of air, reducing heating and air cooling costs without the use of additional gaskets • LED housing is designed to provide 50,000 hours of life and is compatible with many standard Juno trims • 5 year limited warranty on LED components.

## ENVIRONMENTALLY FRIENDLY, ENERGY EFFICIENT

- No harmful ultraviolet or infrared wavelengths
- No lead or mercury
- Comparable light output to 75W PAR30 incandescent

## PRODUCT SPECIFICATIONS

**LED Light Engine** LED array integrated to thermally conductive housing provides uninterrupted heat transfer to ensure long life of the LED

- Replaceable light engine mounts directly to housing and incorporates the latest generation, high lumen output LED array • LEDs are binned within a 3-step MacAdam Ellipse exceeding ENERGY STAR® requirements for superior fixture to fixture color uniformity • 2700K, 3000K, 3500K, or 4000K color temperatures available • 90 CRI minimum.

**Optical System** Computer-optimized reflector design with high reflectance white finish coupled with a high transmission diffusing lens conceals the LEDs and produces uniform aperture luminance • Wide flood (>70°) distribution shipped as standard with optional optic accessories available and sold separately.

**Aesthetic Trim Selections** Compatible with wide selection of existing Juno trims • Shadow free, knife edge design blends seamlessly into ceiling. • Trims are wet location approved for covered applications.

**LED Driver** Choice of dedicated 120 volt (120) driver or universal voltage (MVOLT) drivers that accommodate input voltages from 120-277 volts AC at 50/60Hz • Power factor > 0.9 at 120V input • 120 volt only driver is dimmable with the use of most incandescent, magnetic low voltage and electronic low voltage wall box dimmers • Universal voltage drivers are dimmable with the use of most 0-10V wall box dimmers • For a list of compatible dimmers, see [JUNOICLED-DIM](#) • Mounted between the j-box and housing for easy access and cool operation.

**Life** Rated for 50,000 hours at 70% lumen maintenance.

**Labels** UL listed for U.S. and Canada through-branch wiring, wet locations (covered ceilings) • Union made • UL and cUL.

**Testing** All reports are based on published industry procedures; field performance may differ from laboratory performance.

Specifications subject to change without notice.

## HOUSING FEATURES

**Housing** Designed for use in IC (insulated ceiling) or non-IC construction • Aluminum housing sealed for Air-Loc® compliance • Housing is vertically adjustable to accommodate up to a 2" ceiling thickness.

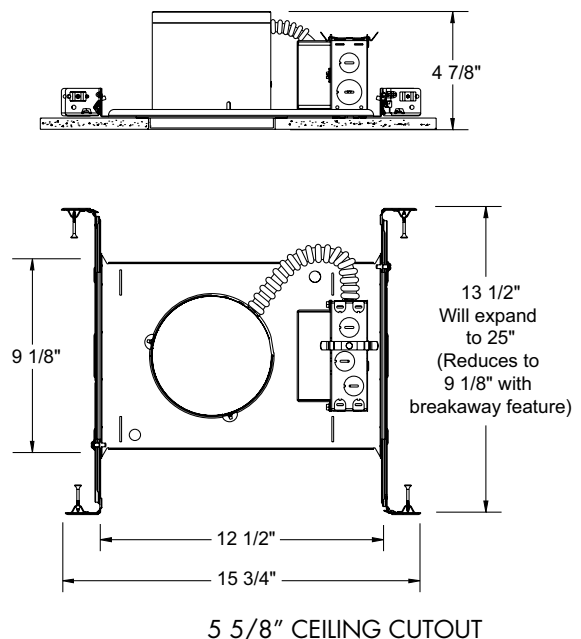
**Junction Box** Pre-wired junction box provided with (5) ½" and (1) ¾" knockouts, (4) knockouts for 12/2 or 14/2 NM cable and ground wire • UL listed and cUL listed for through-branch wiring, maximum 8 #12 branch circuit conductors • Junction box provided with removable access plates • Knockouts equipped with pryout slots • Quick connect electrical connectors supplied as standard for fast, secure installation.

**Mounting Frame** 22-gauge die-formed galvanized steel mounting frame • Rough-in section (junction box, mounting frame, housing and bar hangers) fully assembled for ease of installation.

**Real Nail 3 Bar Hangers** Telescoping Real Nail® 3 system permits quick placement of housing anywhere within 24" O.C. joists or suspended ceilings • Includes removable nail for repositioning of fixture in wood joist construction • Integral T-bar notch and clip for suspended ceilings • Design covered under US Patent D552,969.



## DIMENSIONS



# 5" IC 900 LUMEN LED DOWNLIGHT NEW CONSTRUCTION

## IC20LED (G4 09LM), RECESSED HOUSING LENSED TRIMS

### ELECTRICAL DATA

#### Dedicated 120V Only Driver Option (120 FRPC)

120V	
Input Power	11.5W (+/-5%)
Input Current	0.10A
Frequency	50/60Hz
EMI/RFI	FCC Title 47 CFR, Part 15, Class B (residential)
Minimum starting temp	-25°C

### ELECTRICAL DATA

#### Universal Voltage

	MVOLT EZ10 and EZ1		MVOLT ZT10 and ZT1	
	120V	277V	120V	277V
Input Power	10.8W (+/-5%)	11.8W (+/-5%)	10.8W (+/-5%)	11.8W (+/-5%)
Input Current	0.09A	0.05A	0.09A	0.05A
Frequency	50/60Hz	50/60Hz	50/60Hz	50/60Hz
EMI/RFI	FCC Title 47 CFR, Part 15, Class B (residential)	FCC Title 47 CFR, Part 15, Class B (residential)	FCC Title 47 CFR, Part 15, Class B (residential)	FCC Title 47 CFR, Part 15, Class B (residential)
Minimum starting temp	-20°C	-20°C	-20°C	-20°C

### ORDERING INFORMATION

Housing and trim can be ordered together or separate, but will always ship separately.

Example: IC20LED G4 09LM 30K 90CRI 120 FRPC

Series	Generation	Lumens	Color Temperature	CRI	Voltage/Driver
IC20LED 5" LED IC New Construction Downlight	G4 Generation 4	09LM 900 Nominal Lumens	27K 2700K	90CRI 90+ CRI	120 FRPC 120V Forward/Reverse Phase Cut, 5% dim
			30K 3000K		MVOLT ZT10 Multi-Volt (120-277), 0-10V, 10% dim
			35K 3500K		MVOLT ZT1 Multi-Volt (120-277), 0-10V, 1% dim
			40K 4000K		MVOLT EZ10 Multi-Volt (120-277), eidoLED 0-10V, 10% dim
					MVOLT EZ1 Multi-Volt (120-277), eidoLED 0-10V, 1% dim



A+ Capable options indicated by this color background

### Trim/Description



- 210N WH \*** 5" Lensed Flat Glass Shower Trim - White  
**210N SC \*** 5" Lensed Flat Glass Shower Trim - Satin Chrome  
**210N ABZ \*** 5" Lensed Flat Glass Shower Trim - Classic Aged Bronze



- 212N WH \*** 5" Lensed Frosted Lens with Clear Center Trim - White  
**212N SC \*** 5" Lensed Frosted Lens with Clear Center Trim - Satin Chrome  
**212N ABZ** 5" Lensed Frosted Lens with Clear Center Trim - Classic Aged Bronze



- 2130 WWH \*** 5" Lensed Baffle with Regressed Frosted Dome Lens Trim - White Baffle, White Trim Ring  
**2130 BWH \*** 5" Lensed Baffle with Regressed Frosted Dome Lens Trim - Black Baffle, Black Trim Ring



- 5101 ABZ \*** 5" Lensed Beveled Frame with Frosted Dome Lens Trim - Classic Aged Bronze  
**5101 SC \*** 5" Lensed Beveled Frame with Frosted Dome Lens Trim - Satin Chrome  
**5101 WH \*** 5" Lensed Beveled Frame with Frosted Dome Lens Trim - White

UL Listed for use in wet location.

\* Do not use reflector shipped with trim for LED housing.

Trim Size: 210, 212, 2130 - 6 1/4" O.D.; 5101 - 6 1/2" O.D.

Note: In Canada when insulation is present, Type IC fixtures must be used.

**Air-LOC** JUNO IC housings meet IECC Energy Code requirements per ASTM E283.

Air-Lo<sup>®</sup> rated trims are pre-gasketed for minimum air leakage with IC housings.

### Accessories (ordered separately)

Catalog Number	Description
LEDOPTICG3 MFL	Medium Flood Optic (50")
LEDOPTICG3 NFL	Narrow Flood Optic (37")
LEDOPTICG3 SP	Spot Optic (10")

To order, specify catalog number.

# 5" IC 900 LUMEN LED DOWNLIGHT NEW CONSTRUCTION

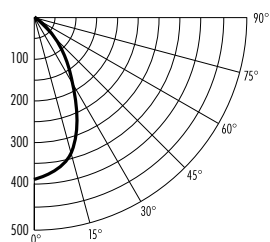
IC20LED (G4 09LM), RECESSED HOUSING  
LENSED TRIMS

## PHOTOMETRIC REPORT

Test Report #: PT10112502R  
Catalog No: IC20LED G4 09LM 35K  
with 210 WH Trim  
and standard wide flood optic

Luminaire Spacing Criterion: 0.92

Luminaire LPW: 56



## CANDLEPOWER DISTRIBUTION (Candelas)

Degrees	
Vertical	0°
0	562
5	553
15	494
25	364
35	195
45	95
55	50
65	27
75	14
85	3
90	0
Multiplier: 27K - 0.90	
30K - 0.97	
40K - 1.04	

## AVERAGE INITIAL FOOTCANDLES

Multiple Units (Square Array, 60'x60' room)

Ceiling 80% Wall 50% Floor 20%

Spacing	RCR1	RCR3	RCR5
4.0'	44	36	31
5.0'	28	23	20
6.0'	19	16	14
7.0'	16	13	11
8.0'	12	10	9
9.0'	10	8	7
10.0'	7	6	5

## ZONAL LUMEN SUMMARY

Zone	Lumens	%Lamp	%Fixture
0 - 30°	355	N/A	54.9
0 - 40°	479	N/A	74.1
0 - 60°	601	N/A	92.9
0 - 90°	647	N/A	100.0

## INITIAL FOOTCANDLES

(One Unit, 11.5W, 59.6° Beam)

Distance to Illuminated Plane (Feet)	Footcandles Beam Center	Beam Diameter
4	35.1	4.6'
6	15.6	6.9'
8	8.8	9.2'
10	5.6	11.5'

## LUMINANCE (Average cd/m²)

Degrees	Average Luminance
45	10593
55	6841
65	5064
75	4135
85	2728

Fixtures tested to IES recommended standard for solid state lighting per LM-79-08. Photometric performance on a single unit represents a baseline of performance for the fixture. Results may vary in the field.