



Project: _____

Fixture Type: _____

Location: _____

Contact/Phone: _____

5" IC 900 LUMEN LED DOWNLIGHT NEW CONSTRUCTION

IC20LED (G4 09LM), RECESSED HOUSING

**HYPERBOLIC TRIMS**

PRODUCT DESCRIPTION

Dedicated LED, Air-Loc® sealed new construction housing with integral light engine • Shallow housing allows for fit in 2 x 6 construction • Can be completely covered with insulation • Fully sealed housing stops infiltration and exfiltration of air, reducing heating and air cooling costs without the use of additional gaskets • LED housing is designed to provide 50,000 hours of life and is compatible with many standard Juno trims • 5 year limited warranty on LED components.

ENVIRONMENTALLY FRIENDLY, ENERGY EFFICIENT

- No harmful ultraviolet or infrared wavelengths
- No lead or mercury
- Comparable light output to 75W PAR30 incandescent

PRODUCT SPECIFICATIONS

LED Light Engine LED array integrated to thermally conductive housing provides uninterrupted heat transfer to ensure long life of the LED

- Replaceable light engine mounts directly to housing and incorporates the latest generation, high lumen output LED array • LEDs are binned within a 3-step MacAdam Ellipse exceeding ENERGY STAR® requirements for superior fixture to fixture color uniformity • 2700K, 3000K, 3500K, or 4000K color temperatures available • 90 CRI minimum.

Hyperbolic Optical System Unique hyperbolic reflector shape optimized for small, directional LED source provides unique aperture appearance with reduced brightness • NMCT™ nano mixing chamber (provided with trim) with high reflectance white finish coupled with a high transmission diffusing lens conceals the LED and integrates with the hyperbolic trim to create a low glare, efficient system.

Aesthetic Trim Selections Hyperbolic reflector available in clear Alzak®, haze, wheat haze, black Alzak® and white • Shadow free, knife edge design blends seamlessly into ceiling • Installs with torsion springs.

LED Driver Choice of dedicated 120 volt (120) driver or universal voltage (MVOLT) drivers that accommodate input voltages from 120-277 volts AC at 50/60Hz • Power factor > 0.9 at 120V input • 120 volt only driver is dimmable with the use of most incandescent, magnetic low voltage and electronic low voltage wall box dimmers • Universal voltage drivers are dimmable with the use of most 0-10V wall box dimmers • For a list of compatible dimmers, see [JUNOICLED-DIM](#) • Mounted between the j-box and housing for easy access and cool operation.

Life Rated for 50,000 hours at 70% lumen maintenance.

Labels ENERGY STAR® Certified when used with select trims • Certified to the high efficacy requirements of California T24 JA8-2016 with select trims • UL listed for U.S. and Canada through-branch wiring, damp locations • Union made • UL and cUL.

Testing All reports are based on published industry procedures; field performance may differ from laboratory performance.

Specifications subject to change without notice.

HOUSING FEATURES

Housing Designed for use in IC (insulated ceiling) or non-IC construction • Aluminum housing sealed for Air-Loc® compliance • Housing is vertically adjustable to accommodate up to a 2" ceiling thickness.

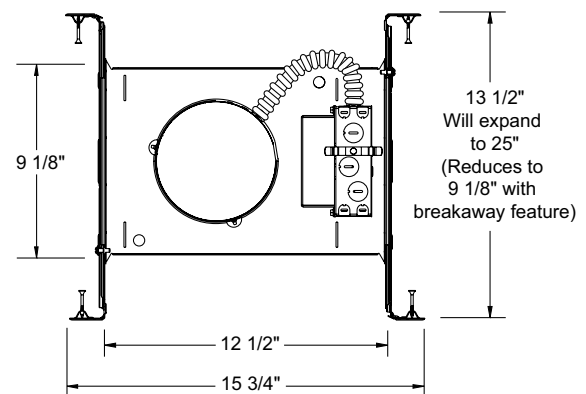
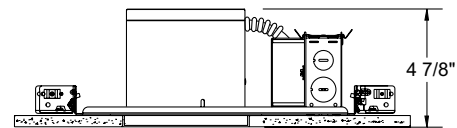
Junction Box Pre-wired junction box provided with (5) 1/2" and (1) 3/4" knockouts, (4) knockouts for 12/2 or 14/2 NM cable and ground wire • UL listed and cUL listed for through-branch wiring, maximum 8 #12 branch circuit conductors • Junction box provided with removable access plates • Knockouts equipped with pryout slots • Quick connect electrical connectors supplied as standard for fast, secure installation.

Mounting Frame 22-gauge die-formed galvanized steel mounting frame • Rough-in section (junction box, mounting frame, housing and bar hangers) fully assembled for ease of installation.

Real Nail 3 Bar Hangers Telescoping Real Nail® 3 system permits quick placement of housing anywhere within 24" O.C. joists or suspended ceilings • Includes removable nail for repositioning of fixture in wood joist construction • Integral T-bar notch and clip for suspended ceilings • Design covered under US Patent D552,969.



DIMENSIONS



5 5/8" CEILING CUTOUT

5" IC 900 LUMEN LED DOWNLIGHT NEW CONSTRUCTION

IC20LED (G4 09LM), RECESSED HOUSING HYPERBOLIC TRIMS

ELECTRICAL DATA

Dedicated 120V Only Driver Option (120 FRPC)

120V	
Input Power	11.5W (+/-5%)
Input Current	0.10A
Frequency	50/60Hz
EMI/RFI	FCC Title 47 CFR, Part 15, Class B (residential)
Minimum starting temp	-25°C

ELECTRICAL DATA

Universal Voltage

	MVOLT EZ10 and EZ1		MVOLT ZT10 and ZT1	
	120V	277V	120V	277V
Input Power	10.8W (+/-5%)	11.8W (+/-5%)	10.8W (+/-5%)	11.8W (+/-5%)
Input Current	0.09A	0.05A	0.09A	0.05A
Frequency	50/60Hz	50/60Hz	50/60Hz	50/60Hz
EMI/RFI	FCC Title 47 CFR, Part 15, Class B (residential)	FCC Title 47 CFR, Part 15, Class B (residential)	FCC Title 47 CFR, Part 15, Class B (residential)	FCC Title 47 CFR, Part 15, Class B (residential)
Minimum starting temp	-20°C	-20°C	-20°C	-20°C

ORDERING INFORMATION

Housing and trim can be ordered together or separate, but will always ship separately.

Example: IC20LED G4 09LM 30K 90CRI 120 FRPC

Series	Generation	Lumens	Color Temperature	CRI	Voltage/Driver
IC20LED 5" LED IC New Construction Downlight	G4 Generation 4	09LM 900 Nominal Lumens	27K 2700K	90CRI 90+ CRI	120 FRPC 120V Forward/Reverse Phase Cut, 5% dim
			30K 3000K		MVOLT ZT10 Multi-Volt (120-277), 0-10V, 10% dim
			35K 3500K		MVOLT ZT1 Multi-Volt (120-277), 0-10V, 1% dim
			40K 4000K		MVOLT EZ10 Multi-Volt (120-277), eldoLED 0-10V, 10% dim
					MVOLT EZ1 Multi-Volt (120-277), eldoLED 0-10V, 1% dim



A+ Capable options indicated
by this color background

Trim/Description



204HYP3 BWH ¹	5" Hyperbolic Cone Trim - Black Cone, White Trim Ring
204HYP3 CWH ³	5" Hyperbolic Cone Trim - Clear Alzak® Cone, White Trim Ring
204HYP3 HZWH ⁴	5" Hyperbolic Cone Trim - Haze Cone, White Trim Ring
204HYP3 WHZABZ ¹	5" Hyperbolic Cone Trim - Wheat Haze Cone, Classic Aged Bronze Trim Ring
204HYP3 WHZWH ¹	5" Hyperbolic Cone Trim - Wheat Haze Cone, White Trim Ring
204HYP3 WWH ²	5" Hyperbolic Cone Trim - White Cone, White Trim Ring

Trim Size: 6 1/4" O.D.

Alzak® is a registered trademark of Alcoa Corp.

Note: In Canada when insulation is present, Type IC fixtures must be used.

¹ Not ENERGY STAR®-Certified or T24 Certified

² MVOLT: Not ENERGY STAR®-Certified or T24 certified

³ MVOLT: ENERGY STAR®-Certified and T24 certified @ 35K, 40K only

⁴ MVOLT: ENERGY STAR®-Certified and T24 certified @ 40K only

Accessories (ordered separately)

Catalog Number	Description
TR5 ABZ	5" Trim Ring - Classic Aged Bronze
TR5 BL	5" Trim Ring - Black
TR5 SC	5" Trim Ring - Satin Chrome
TR5 WH	5" Trim Ring - White

To order, specify catalog number.

5" IC 900 LUMEN LED DOWNLIGHT NEW CONSTRUCTION

IC20LED (G4 09LM), RECESSED HOUSING
HYPERBOLIC TRIMS

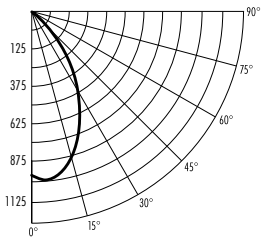
PHOTOMETRIC REPORT

Test Report #: PT03140404

Catalog No: IC20LED G4 09LM 35K
with 204HYP3 CWH Trim
and standard nano mixing
chamber

Luminaire Spacing Criterion: 0.94

Luminaire LPW: 76



CANDLEPOWER DISTRIBUTION (Candelas)

Degrees	0°
Vertical	
0	960
5	990
15	893
25	644
35	303
45	61
55	0
65	0
75	0
85	0
90	0
Multiplier: 27K - 0.93	
30K - 0.99	
40K - 1.01	

AVERAGE INITIAL FOOTCANDLES

Multiple Units (Square Array, 60'x60' room)

Ceiling 80% Wall 50% Floor 20%

Spacing	RCR1	RCR3	RCR5
4.0'	61	53	47
5.0'	39	34	30
6.0'	27	24	21
7.0'	22	19	17
8.0'	17	15	13
9.0'	13	12	10
10.0'	10	9	7

ZONAL LUMEN SUMMARY

Zone	Lumens	%Lamp	%Fixture
0-30°	635	N/A	72.1
0-40°	827	N/A	93.9
0-60°	880	N/A	100.0
0-90°	880	N/A	100.0

INITIAL FOOTCANDLES

(One Unit, 11.5W, 59.8° Beam)

Distance to Illuminated Plane (Feet)	Footcandles Beam Center	Beam Diameter
4	60.0	4.6'
6	26.7	6.9'
8	15.0	9.2'
10	9.6	11.5'

LUMINANCE (Average cd/m²)

Degrees	Average 0° Luminance
45	8200
55	16
65	0
75	0
85	0

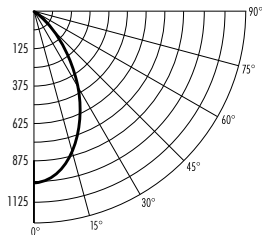
PHOTOMETRIC REPORT

Test Report #: PT03140405

Catalog No: IC20LED G4 09LM 35K
with 204HYP3 HZWH Trim
and standard nano mixing
chamber

Luminaire Spacing Criterion: 0.88

Luminaire LPW: 74



CANDLEPOWER DISTRIBUTION (Candelas)

Degrees	0°
Vertical	
0	1011
5	993
15	839
25	618
35	296
45	108
55	1
65	0
75	0
85	0
90	0
Multiplier: 27K - 0.93	
30K - 0.99	
40K - 1.01	

AVERAGE INITIAL FOOTCANDLES

Multiple Units (Square Array, 60'x60' room)

Ceiling 80% Wall 50% Floor 20%

Spacing	RCR1	RCR3	RCR5
4.0'	59	51	45
5.0'	38	33	29
6.0'	26	23	20
7.0'	21	18	16
8.0'	17	15	13
9.0'	13	11	10
10.0'	9	8	7

ZONAL LUMEN SUMMARY

Zone	Lumens	%Lamp	%Fixture
0-30°	608	N/A	71.4
0-40°	795	N/A	93.3
0-60°	852	N/A	100.0
0-90°	852	N/A	100.0

INITIAL FOOTCANDLES

(One Unit, 11.5W, 59.8° Beam)

Distance to Illuminated Plane (Feet)	Footcandles Beam Center	Beam Diameter
4	63.2	4.6'
6	28.1	6.9'
8	15.8	9.2'
10	10.1	11.5'

LUMINANCE (Average cd/m²)

Degrees	Average 0° Luminance
45	8727
55	93
65	0
75	0
85	0

Fixtures tested to IES recommended standard for solid state lighting per LM-79-08. Photometric performance on a single unit represents a baseline of performance for the fixture. Results may vary in the field.