

JUNO®

Project: _____

Fixture Type: _____

Location: _____

Contact/Phone: _____

4" IC NEW CONSTRUCTION JUNCTION BOX HOUSING

FOR USE WITH LED RETROFIT TRIM MODULES
AND SURFACE MOUNT FIXTURES

IC1JB SERIES

PRODUCT DESCRIPTION

IC Air-Loc 4" Junction Box Housing for New Construction Applications

- May be installed in fire-rated ceiling assemblies per UL514A up to 2 hour fire rating
- Can be completely covered with insulation
- For use with Juno 4" LED Retrofit Trim Modules including 4RLD and 4RLA series
- Compatible with surface mount fixtures including Juno 6RLS and most Juno SlimForm™ fixtures with optional accessory bracket (order separately).

PRODUCT SPECIFICATIONS

Junction Box Housing Designed for use in IC (insulated ceiling) or non-IC construction

- Rough-in section (junction box, bar hangers) fully assembled for ease of installation
- Painted steel 3-1/2" deep 4" square junction box
- Provided with (4) 1/2"-3/4" concentric, (2) 1/2", (4) 3/4" and (2) 1" knockouts
- Listed for through-branch wiring, maximum 8 No. 12 AWG 90°C branch circuit conductors (4 in and 4 out).

Electrical Connections Junction box housing ships with quick connect whip for installation of 4" retrofit trim modules.

Real Nail® 3 Bar Hangers Telescoping Real Nail 3 system permits quick placement of housing anywhere within 24" O.C. joists or suspended ceilings

- Bars scored in two locations for fast, clean breaking, allowing housing installation in tight applications
- Captive bugle-headed ring shank nail for quick one-step installation and easy removal with claw hammer for fixture relocation
- Integral T-bar notch for suspended ceilings
- Locking set screw to lock junction box housing in position
- Design covered under US Patent D552,969.

Aesthetic Trim Selection Compatible with a selection of existing Juno retrofit trim modules and surface mount fixtures.

Labels ETL listed for U.S. and Canadian through-branch wiring, damp locations

- Union made
- cETLus
- Air-Loc.

Testing All reports are based on published industry procedures; field performance may differ from laboratory performance.

Specifications subject to change without notice.

INSTALLATION

The IC1JB junction box housing must be installed per UL514A guidelines for up to 2 hour fire rating. Precise ceiling cutout required. For use in 1/2"-1 1/4" ceiling thickness. IC1JB Junction Box Housing ships with retrofit mounting bracket, trim ring, and quick connect whip.

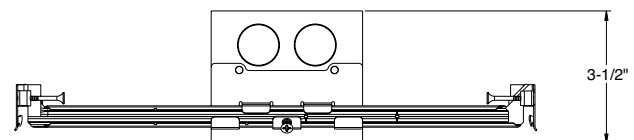
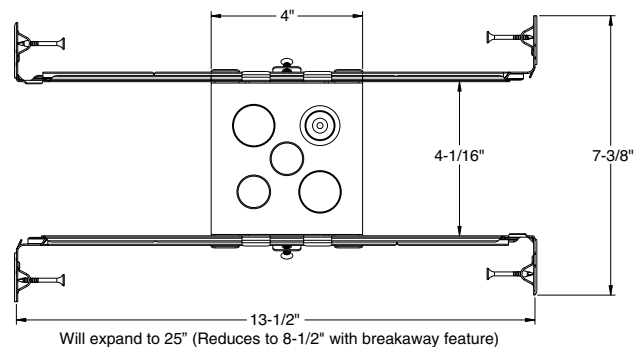
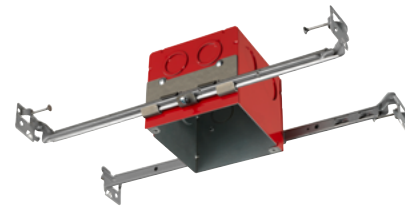
Compatible 4" LED Retrofit Trim Modules Juno Basics 4RLD and 4RLA series

- IC1JB ships with Patent pending retrofit mounting bracket and trim ring for installation of 4RLD and 4RLA series.

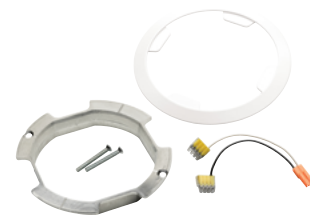
Compatible Surface Mount Fixtures Juno Basics 6RLS and Juno SlimForm™ JSF/JSFSQ series

- For Juno SlimForm, accessory bracket JSFMTGPLT 4X4 is required for installation.

DIMENSIONS



4 1/4" SQUARE CEILING CUTOUT MAX



Retrofit Mounting Bracket,
Trim Ring and Quick Connect Whip

PRODUCT CODE

Catalog Number	Input Voltage
IC1JB 4" IC New Construction Junction Box	Trim Dependent - See trim specifications

Junction box and trim can be ordered together or separate, but will always ship separately.

4" IC NEW CONSTRUCTION JUNCTION BOX HOUSING

FOR USE WITH LED RETROFIT TRIM
MODULES AND SURFACE MOUNT FIXTURES

IC1JB SERIES

COMPATIBLE TRIM SERIES

4RLD

Series	Generation	Lumens	Color Temperature	CRI	Voltage	Driver	Trim Finish
4RLD 4" Juno Basics Retrofit Downlight	G3 Generation 3	06LM 600 Nominal Lumens 09LM 900 Nominal Lumens	27K 2700K 30K 3000K 35K 3500K	90CRI 90+CRI	120 120V	FRPC Forward/Reverse Phase	WWH White

4RLA

Series	Generation	Lumens	Color Temperature	CRI	Distribution	Voltage	Driver	Trim Finish
4RLA 4" Juno Basics Retrofit Adjustable	G2 Generation 2	06LM 600 Nominal Lumens	27K 2700K 30K 3000K	90CRI 90+CRI	NFL Narrow Flood WFL Wide Flood	120 120V	FRPC Forward/Reverse Phase	WH White

6RLS

Series	Generation	Lumens	Color Temperature	CRI	Voltage	Driver	Trim Finish
6RLS 6" Juno Basics Retrofit Surface Mount	G2 Generation 2	07LM 700 Nominal Lumens 10LM 1000 Nominal Lumens	27K 2700K 30K 3000K	90CRI 90+CRI	120 120V	FRPC Forward/Reverse Phase	WH White

4" IC NEW CONSTRUCTION JUNCTION BOX HOUSING

FOR USE WITH LED RETROFIT TRIM MODULES AND SURFACE MOUNT FIXTURES

IC1JB SERIES

COMPATIBLE TRIM SERIES

JSF

Series	Size/Lumens	Color Temperature	CRI	Voltage/Driver	Trim Finish	Emergency Battery ^{1,2}
JSF Juno SlimForm Surface Mount Downlight - Round	7IN 10LM 7", 1000 Lumens	27K 2700K	90CRI 90+CRI	120 FRPC	WH White	EL Battery Back-Up Option
	11IN 13LM 11", 1300 Lumens	30K 3000K				
	13IN 18LM 13", 1800 Lumens	35K 3500K		MVOLT ZT		EBX Empty Back Box for Aesthetics
		40K 4000K				

Note:

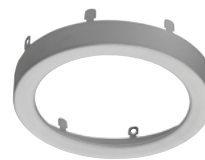
- 1 Emergency options available with 11IN and 13IN only.
- 2 Emergency options available with MVOLT ZT only.

ACCESSORIES

TRIM – Optional, field installable finish trim rings available to change the exterior finish of fixture.

Example: JSFTRIM 7IN BL

Series	Size	Finish
JSFTRIM SlimForm Accessory- Trim	7IN 7 inches	BL Black
		BZ Bronze
		SN Satin Nickel



TRIM
Shown in Satin Nickel

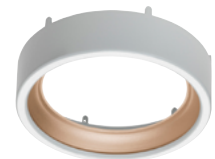
SHROUD – Optional, field installable decorative baffle and cone shrouds provides the aesthetic and source shielding similar to the experience of a fully recessed downlight.

Example: JSFSHROUD 7IN DB WWH

Series	Size	Shroud Style	Finish
JSFSHROUD SlimForm Accessory Shroud - Round	7IN 7 inches	DB Downlight Baffle	WWH White trim, white shroud
		DC Downlight Cone	BWH ¹ Black trim, white shroud
			HZWH Haze trim, white shroud
			WHZWH Wheat Haze trim, white shroud



BAFFLE SHROUD
Shown with Black Trim and White Shroud



CONE SHROUD
Shown with Wheat Haze Trim and White Shroud

Note:

- 1 BWH only available with downlight baffle.

Accessories
JSFMTGPLT 4X4 Juno SlimForm mounting plate allows installation to 4X4 junction box

Mounting plate accessory (JSFMTGPLT 4X4) must be used with Juno SlimForm fixtures (JSF and JSFSQ) to be compatible with IC1JB

4" IC NEW CONSTRUCTION JUNCTION BOX HOUSING

FOR USE WITH LED RETROFIT TRIM MODULES AND SURFACE MOUNT FIXTURES

IC1JB SERIES

COMPATIBLE TRIM SERIES

JSFSQ

Series	Size/Lumens	Color Temperature	CRI	Voltage/Driver	Trim Finish	Emergency Battery ^{1,2}
JSFSQ Juno SlimForm Surface Mount Downlight - Square	5IN 07LM 5", 700 Lumens	27K 2700K	90CRI 90+CRI	120 FRPC Dedicated 120V, Forward Reverse Phase Dimming	WH White	EL Battery Back-Up Option
	7IN 10LM 7", 1000 Lumens	30K 3000K				EBX Empty Back Box for Aesthetics
	12IN 13LM 12", 1300 Lumens	35K 3500K				
	14IN 18LM 14", 1800 Lumens	40K 4000K		MVOLT ZT Universal Voltage 120V-277V, 0-10V Dimming		

Note:

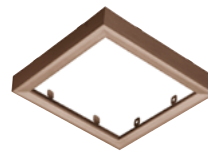
- 1 Emergency options available with 12IN and 14IN only.
- 2 Emergency options available with MVOLT ZT only.

ACCESSORIES

TRIM – Optional, field installable finish trim rings available to change the exterior finish of fixture.

Example: JSFSQTRIM 5IN BL

Series	Size	Finish
JSFSQTRIM SlimForm Accessory Trim - Square	5IN 5 inches	BL Black
	7IN 7 inches	BZ Bronze
		SN Satin Nickel

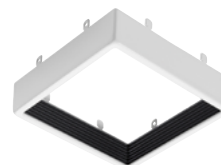


TRIM
Shown in Bronze

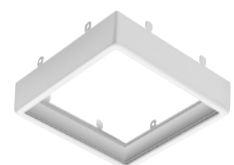
SHROUD – Optional, field installable decorative baffle and cone shrouds provides the aesthetic and source shielding similar to the experience of a fully recessed downlight.

Example: JSFSQSHROUD 5IN DB WWH

Series	Size	Shroud Style	Finish
JSFSQSHROUD SlimForm Accessory Shroud - Square	5IN 5 inches	DB Downlight Baffle	WWH White trim, white shroud
		DC Downlight Cone	BWH ¹ Black trim, white shroud
	7IN 7 inches		HZWH Haze trim, white shroud
			WHZWH Wheat Haze trim, white shroud



BAFFLE SHROUD
Shown with Black Trim and White Shroud



CONE SHROUD
Shown with Haze Trim and White Shroud

Note:

- 1 BWH only available with downlight baffle.