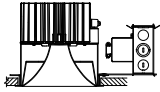




L-SERIES LED-DIMMING

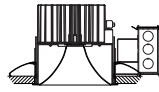
NEW CONSTRUCTION

L4
LLP4
L6
L8



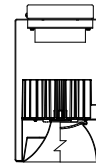
REMODEL

LRM4
LLPRM4
LRM6
LRM8



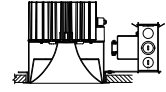
CYLINDER

LC4
LC6
LC8



RETROFIT

LRT6
LRT8
LRT9
LRT10
LRT12



COMPATIBLE DIMMERS FOR USE WITH L-SERIES LED FIXTURES

- Electronic low voltage dimmers require a neutral wire in the wall box
- 0-10V dimming may require a separate relay module to turn fixture on/off
- Indy LED L-Series fixtures are capable of dimming using IEC 60929 0-10V control compliant dimmers

Options	Manufacturer	Product	Part Number	Control Range	Fixtures Per Dimmer	
					120V	277V
ZT Standard (08LM-40LM)	Lutron	Nova	NFTV (0-10V)*	100%-10%	1-30 **	1-30*
		Nova T	NTFTV (0-10V)*	100%-10%	1-30 **	1-30*
		Diva	DVTV (0-10V)*	100%-10%	1-30 **	1-30*
		GRAFIK Eye QS	GRX-TVI	100%-10%***	1-35	1-35
	Leviton	IllumaTech	IP710-DL	100%-7%	1-21	1-26
	Sensor Switch	WSX	WSX D WH*	100%-10%	1-17	1-25
	Wattstopper	LMRC	LMRC-211 *	100%-10%	1-40	1-40
ZT Standard (45LM-90LM)	Lutron	Nova	NFTV (0-10V)*	100%-10%	1-7 **	1-7*
		Nova T	NTFTV (0-10V)*	100%-10%	1-7 **	1-7*
		Diva	DVTV (0-10V)*	100%-10%	1-7 **	1-7*
		GRAFIK Eye QS	GRX-TVI	100%-10%***	1-20	1-20
	Leviton	IllumaTech	IP710-DL	100%-10%	1-7	1-7
	Sensor Switch	WSX	WSX D WH*	100%-10%	1-7	1-10
	Wattstopper	LMRC	LMRC-211 *	100%-10%	1-25	1-25
GZ1 (08LM-40LM)	Lutron	Nova	NFTV (0-10V)*	100%-1%	1-30 **	1-30*
		Nova T	NTFTV (0-10V)*	100%-1%	1-30 **	1-30*
		Diva	DVTV (0-10V)*	100%-1%	1-30 **	1-30*
		GRAFIK Eye QS	GRX-TVI	100%-1%***	1-35	1-35
	Leviton	IllumaTech	IP710-DL	100%-1%	1-21	1-26
	Sensor Switch	WSX	WSX D WH*	100%-1%	1-17	1-25
	Wattstopper	LMRC	LMRC-211 *	100%-1%	1-40	1-40
GZ1 (45LM-55LM)	Lutron	Nova	NFTV (0-10V)*	100%-1%	1-7 **	1-7*
		Nova T	NTFTV (0-10V)*	100%-1%	1-7 **	1-7*
		Diva	DVTV (0-10V)*	100%-1%	1-7 **	1-7*
		GRAFIK Eye QS	GRX-TVI	100%-1%***	1-20	1-20
	Leviton	IllumaTech	IP710-DL	100%-1%	1-7	1-7
	Sensor Switch	WSX	WSX D WH*	100%-1%	1-7	1-10
	Wattstopper	LMRC	LMRC-211 *	100%-1%	1-25	1-25
EZ1 (08LM-40LM)	Lutron	Nova	NFTV (0-10V)	100%-1%	1-30 **	1-30**
		Nova T	NTFTV (0-10V)	100%-1%	1-30 **	1-30**
		Diva	DVTV (0-10V)	100%-1%	1-30 **	1-30**
		GRAFIK Eye QS	GRX-TVI	100%-1%***	1-35	1-35
	Leviton	IllumaTech	IP710-DL	100%-1%	1-21	1-26
	Sensor Switch	WSX	WSX D WH	100%-1%	1-17	1-25
	Wattstopper	LMRC	LMRC-211	100%-1%	1-40	1-40
EZ1 (45LM-55LM)	Lutron	Nova	NFTV (0-10V)*	100%-1%	1-29 **	1-29**
		Nova T	NTFTV (0-10V)*	100%-1%	1-29 **	1-29**
		Diva	DVTV (0-10V)*	100%-1%	1-29 **	1-20**
		GRAFIK Eye QS	GRX-TVI	100%-1%***	1-29	1-29
	Leviton	IllumaTech	IP710-DL	100%-1%	1-16	1-16
	Sensor Switch	WSX	WSX D WH*	100%-1%	1-13	1-18
	Wattstopper	LMRC	LMRC-211 *	100%-1%	1-36	1-36
EZ1 (60LM-80LM)	Lutron	Nova	NFTV (0-10V)*	100%-1%	1-7 **	1-7*
		Nova T	NTFTV (0-10V)*	100%-1%	1-7 **	1-7*
		Diva	DVTV (0-10V)*	100%-1%	1-7 **	1-7*
		GRAFIK Eye QS	GRX-TVI	100%-1%***	1-20	1-20
	Leviton	IllumaTech	IP710-DL	100%-1%	1-7	1-7
	Sensor Switch	WSX	WSX D WH*	100%-1%	1-7	1-10
	Wattstopper	LMRC	LMRC-211 *	100%-1%	1-25	1-25

*Recommended dimmer

(continued on page 2)

**Maximum quantity might be different if used with Lutron power packs for AC line switching

***For better dimming performance, adjust the dimming voltage to 1V or above



L-SERIES LED-DIMMING

COMPATIBLE DIMMERS FOR USE WITH L-SERIES LED FIXTURES (continued)

Options	Manufacturer	Product	Part Number	Control Range	Fixtures Per Dimmer	
					120V	277V
EZ10 (08LM-40LM)	Lutron	Nova	NFTV (0-10V)	100%-10%	1-30 **	1-30**
		Nova T	NTFTV (0-10V)	100%-10%	1-30 **	1-30**
		Diva	DVTV (0-10V)	100%-10%	1-30 **	1-30**
		GRAFIK Eye QS	GRX-TVI	100%-10%***	1-35	1-35
	Leviton	IllumaTech	IP710-DL	100%-10%	1-21	1-26
	Sensor Switch	WSX	WSX D WH	100%-10%	1-17	1-25
	Wattstopper	LMRC	LMRC-211	100%-10%	1-40	1-40
EZ10 (45LM-55LM)	Lutron	Nova	NFTV (0-10V)*	100%-10%	1-29 **	1-29**
		Nova T	NTFTV (0-10V)*	100%-10%	1-29 **	1-29**
		Diva	DVTV (0-10V)*	100%-10%	1-29 **	1-20**
		GRAFIK Eye QS	GRX-TVI	100%-10%***	1-29	1-29
	Leviton	IllumaTech	IP710-DL	100%-10%	1-16	1-16
	Sensor Switch	WSX	WSX D WH*	100%-10%	1-13	1-18
	Wattstopper	LMRC	LMRC-211 *	100%-10%	1-36	1-36
EZ10 (60LM-80LM)	Lutron	Nova	NFTV (0-10V)*	100%-10%	1-7 **	1-7*
		Nova T	NTFTV (0-10V)*	100%-10%	1-7 **	1-7*
		Diva	DVTV (0-10V)*	100%-10%	1-7 **	1-7*
		GRAFIK Eye QS	GRX-TVI	100%-10%***	1-20	1-20
	Leviton	IllumaTech	IP710-DL	100%-10%	1-7	1-7
	Sensor Switch	WSX	WSX D WH*	100%-10%	1-7	1-10
	Wattstopper	LMRC	LMRC-211 *	100%-10%	1-25	1-25
EZB (08LM-40LM)	Lutron	Nova	NFTV (0-10V)	100% - <1%	1-30 **	1-30**
		Nova T	NTFTV (0-10V)	100% - <1%	1-30 **	1-30**
		Diva	DVTV (0-10V)	100% - <1%	1-30 **	1-30**
		GRAFIK Eye QS	GRX-TVI	100% - <1%***	1-35	1-35
	Leviton	IllumaTech	IP710-DL	100% - <1%	1-21	1-26
	Sensor Switch	WSX	WSX D WH	100% - <1%	1-17	1-25
	Wattstopper	LMRC	LMRC-211	100% - <1%	1-40	1-40
EZB (45LM-55LM)	Lutron	Nova	NFTV (0-10V)*	100% - <1%	1-29 **	1-29**
		Nova T	NTFTV (0-10V)*	100% - <1%	1-29 **	1-29**
		Diva	DVTV (0-10V)*	100% - <1%	1-29 **	1-20**
		GRAFIK Eye QS	GRX-TVI	100% - <1%***	1-29	1-29
	Leviton	IllumaTech	IP710-DL	100% - <1%	1-16	1-16
	Sensor Switch	WSX	WSX D WH*	100% - <1%	1-13	1-18
	Wattstopper	LMRC	LMRC-211 *	100% - <1%	1-36	1-36
EZB (60LM-80LM)	Lutron	Nova	NFTV (0-10V)*	100% - <1%	1-7 **	1-7*
		Nova T	NTFTV (0-10V)*	100% - <1%	1-7 **	1-7*
		Diva	DVTV (0-10V)*	100% - <1%	1-7 **	1-7*
		GRAFIK Eye QS	GRX-TVI	100% - <1%***	1-20	1-20
	Leviton	IllumaTech	IP710-DL	100% - <1%	1-7	1-7
	Sensor Switch	WSX	WSX D WH*	100% - <1%	1-7	1-10
	Wattstopper	LMRC	LMRC-211 *	100% - <1%	1-25	1-25

*Recommended dimmer

**Maximum quantity might be different if used with Lutron power packs for AC line switching

***For better dimming performance, adjust the dimming voltage to 1V or above

(continued on page 3)



L-SERIES LED-DIMMING

COMPATIBLE DIMMERS FOR USE WITH L-SERIES LED FIXTURES (continued)

Options	Manufacturer	Product	Part Number	Control Range	Fixtures Per Dimmer	
					120V	277V
FD (08LM-23LM)	Lutron	Glyder	GLV-600*	100%-5%	1-8	NA
		Diva	DVLV-600P*	100%-7%	1-8	NA
		Nova T	NT-1000*	100%-5%	1-16	NA
		Diva	DV-600P*	100%-4%	1-10	NA
		Skylark	SLV-600P*	100%-6%	1-8	NA
		Nova T	NTELV-600*	100%-5%	1-15	NA
		Diva	DVELV-600P*	100%-4%	1-15	NA
		Maestro	MAELV-600*	100%-5%	1-15	NA
		RadioRA2	RRD-10ND*	100%-5%	1-16	NA
		Homeworks	LP-RPM-4A*	100%-5%	1-20	NA
	GRAFIK Eye QS	PHPM-PA*	100%-5%	1-20	NA	
	Leviton	SureSlide	6633*	100%-4%	1-10	NA
		SureSlide	6613*	100%-4%	1-8	NA
		IllumaTech	IPL06-10Z*	100%-4%	1-10	NA
Vizia		VPE06-1LX*	100%-4%	1-15	NA	
IllumaTech		IPE04*	100%-8%	1-7	NA	
FD (28LM-55LM)	Lutron	Glyder	GLV-600*	100%-7%	1-5	NA
		Nova T	NT-1000	100%-15%	1-9	NA
		Diva	DV-600P*	100%-5%	1-5	NA
		Skylark	SLV-600P*	100%-8%	1-5	NA
		RadioRA 2	RRD-10ND*	100%-4%	1-9	NA
		RadioRA 2	RRD-6NA*	100%-4%	1-5	NA
		Diva	DVELV-600P*	100%-6%	1-8	NA
		Maestro	MAELV-600*	100%-9%	1-8	NA
	Leviton	SureSlide	6633*	100%-4%	1-5	NA
		Illumatech	IPE04*	100%-8%	1-3	NA
		Vizia	VPE06-1LX*	100%-6%	1-5	NA
	Synergy	ISD	400 ELV 120*	100%-8%	1-3	NA

*Recommended dimmer

**Maximum quantity might be different if used with Lutron power packs for AC line switching

***For better dimming performance, adjust the dimming voltage to 1V or above

(continued on page 4)



L-SERIES LED-DIMMING

COMPATIBLE DIMMERS FOR USE WITH L-SERIES LED FIXTURES (continued)

Options	Manufacturer	Product	Part Number	Control Range	Fixtures Per Dimmer	
					120V	277V
NL	Acuity Brands nLight	nPODM	nPODM DX (Color)	100%-10%	1-128	1-128
		nPOD GFX	nPOD GFX (Color)	100%-10%	1-128	1-128
		nWSX LV	nWSX LV DX	100%-10%	1-128	1-128
		nWSX PDT LV	nWSX PDT LV DX	100%-10%	1-128	1-128
ECOD (Indy Luminaire with Hi-lume 1% EcoSystem LED Driver with Soft- on, Fade-to-Black)	Lutron	Energi Savr Node w/ EcoSystem	CS-1L-WM, CS-2L-WM, CS-1L-CM, CS-2L-CM	100%-1% 100%-4%	64 per EcoSystem Link 1-10	NA NA
		GRAFIK Eye QS w/ EcoSystem	QSGRJ-16E	100%-1%	64 per EcoSystem link	NA
		Quantum	Quantum	100%-1%	64 per EcoSystem link	NA
		PowPak dimming module w/ EcoSystem	RMJ-ECO32-DV-B	100%-1%	32 per Module	NA
FDL* (Indy Luminaire with Hi-lume 1% 2-Wire LED Driver Forward-Phase Control)	Lutron	Maestro Wireless	MRF2-6ND-120	100%-1%	1-8	NA
		RadioRA 2 1000W	RRD-10ND	100%-1%	1-13	NA
		RadioRA 2 Adaptive Dimmer	RRD-6NA	100%-1%	1-8	NA
		RadioRA 600W	RA-6ND	100%-1%	1-8	NA
		RadioRA 1000W	RA-10ND	100%-1%	1-13	NA
		HomeWorks QS 600W	HQRD-6ND	100%-1%	1-8	NA
		HomeWorks QS 1000W	HQRD-10ND	100%-1%	1-13	NA
		HomeWorks QS Adaptive Dimmer	HQRD-6NA	100%-1%	1-8	NA
		HomeWorks QS WPM	HQRJ-WPM-6D-120	100%-1%	1-10 (per outlet)	NA
		HomeWorks 600W Dimmer	HRD-6ND	100%-1%	1-8	NA
		HomeWorks 1000W Dimmer	HWD-10ND, HRD-10ND	100%-1%	1-13	NA
		HomeWorks WPM	HWI-WPM-6D-120	100%-1%	1-10 (per outlet)	NA
		GRAFIK Eye	QS QSGR-, QSGRJ-	100%-1%	1-10 (per outlet)	NA
		GRAFIK Eye 3000	GRX-3100, GRX-3500	100%-1%	1-10 (per outlet)	NA
		RPM-4U Module	HW-RPM-4U-120	100%-1%	1-26 (per outlet)	NA
		(LCP, HomeWorks, GRAFIK Systems, Quantum) RPM-4A Module	LP-RPM-4U-120 HW-RPM-4A-120	100%-1%	1-13 (per outlet)	NA
		(LCP, HomeWorks, GRAFIK Systems, Quantum) GP Panels	LP-RPM-4A-120 Various	100%-1%	1-26	NA
Stanza	SZ-6ND	100%-1%	1-8	NA		

*Recommended dimmer

**Maximum quantity might be different if used with Lutron power packs for AC line switching

***For better dimming performance, adjust the dimming voltage to 1V or above

DALI OR DMXR CONTROLLING SYSTEMS

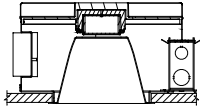
Options	Manufacturer/Controllers	Control Range	Fixtures Per System	
			120V	277V
DALI**	Additional information on compatible Control Systems can be found at DALI	100%-0.1%	1-64	1-64
DMXR***	Additional information on compatible Control Systems can be found at DMXR	100%-0.1%	1-32	1-32

NA = Not available; *Phase adaptive dimmers must be configured to forward-phase mode; **Works with any DALI controller that bears the DALI certification and complies with the DALI standards - IEC 62386-101, 62386-102, and 62386-207; *** Works with any DMX / RDM controller that complies with American National Standard E1.11 - 2008 (R2013) Entertainment Technology USITT DMX512-A Asynchronous Serial Digital Data Transmission Standard for Controlling Lighting Equipment and Accessories And ANSI E1.20 - 2010 Entertainment Technology RDM Remote Device Management Over DMX512 Networks

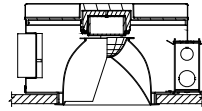


DESIGNER SERIES LED-DIMMING

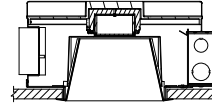
SD4
SD6
SD8



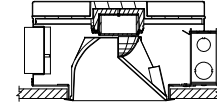
SD4 AW
SD6 AW
SD8 AW



SD4SQ
SD6SQ
SD8SQ



SD4SQ AW
SD6SQ AW
SD8SQ AW



COMPATIBLE DIMMERS FOR USE WITH PERFORMANCE SERIES LED FIXTURES

- Electronic low voltage dimmers require a neutral wire in the wall box
- 0-10V dimming may require a separate relay module to turn fixture on/off
- Indy LED L-Series fixtures are capable of dimming using IEC 60929 0-10V control compliant dimmers

Options	Manufacturer	Product	Part Number	Control Range	Fixtures Per Dimmer	
					120V	277V
ZT (11LM-40LM)	Lutron	Nova	NFTV (0-10V)*	100% - <10%	1-30 **	1-30*
		Nova T	NTFTV (0-10V)*	100% - <10%	1-30 **	1-30*
		Diva	DVTV (0-10V)*	100% - <10%	1-30 **	1-30*
		GRAFIK Eye QS	GRX-TVI	100% - <10%***	1-35	1-35
	Leviton	IllumaTech	IP710-DL	100% - <10%	1-21	1-26
	Sensor Switch	WSX	WSX D WH*	100% - <10%	1-17	1-25
	Wattstopper	LMRC	LMRC-211*	100% - <10%	1-40	1-40
ZT (50LM)	Lutron	Nova	NFTV (0-10V)*	100% - <10%	1-7 **	1-7*
		Nova T	NTFTV (0-10V)*	100% - <10%	1-7 **	1-7*
		Diva	DVTV (0-10V)*	100% - <10%	1-7 **	1-7*
		GRAFIK Eye QS	GRX-TVI	100% - <10%***	1-20	1-20
	Leviton	IllumaTech	IP710-DL	100% - <10%	1-7	1-7
	Sensor Switch	WSX	WSX D WH*	100% - <10%	1-7	1-10
	Wattstopper	LMRC	LMRC-211*	100% - <10%	1-25	1-25
EZ1 (11LM-30LM)	Lutron	Nova	NFTV (0-10V)	100%-1%	1-30 **	1-30**
		Nova T	NTFTV (0-10V)	100%-1%	1-30 **	1-30**
		Diva	DVTV (0-10V)	100%-1%	1-30 **	1-30**
		GRAFIK Eye QS	GRX-TVI	100%-1%***	1-35	1-35
	Leviton	IllumaTech	IP710-DL	100%-1%	1-21	1-26
	Sensor Switch	WSX	WSX D WH	100%-1%	1-17	1-25
	Wattstopper	LMRC	LMRC-211	100%-1%	1-40	1-40
EZB (11LM-30LM)	Lutron	Nova	NFTV (0-10V)	100% - <1%	1-30 **	1-30**
		Nova T	NTFTV (0-10V)	100% - <1%	1-30 **	1-30**
		Diva	DVTV (0-10V)	100% - <1%	1-30 **	1-30**
		GRAFIK Eye QS	GRX-TVI	100% - <1%***	1-35	1-35
	Leviton	IllumaTech	IP710-DL	100% - <1%	1-21	1-26
	Sensor Switch	WSX	WSX D WH	100% - <1%	1-17	1-25
	Wattstopper	LMRC	LMRC-211	100% - <1%	1-40	1-40
ECOD (Indy Luminaire with Hi-Lume 1% EcoSystem LED Driver with Soft-on, Fade-to-Black)	Lutron	Energi Savr Node w/ EcoSystem	CS-1L-WM, CS-2L-WM, CS-1L-CM, CS-2L-CM	100%-1%	64 per EcoSystem link	
		GRAFIK Eye QS w/ EcoSystem	QSGRJ-16E	100%-1%	64 per EcoSystem link	
		Quantum	Quantum	100%-1%	64 per EcoSystem link	
		PowPak dimming module w/ EcoSystem	RMJ-ECO32-DV-B	100%-1%	32 per Module	
NL	Acuity Brands nLight	nPODM	nPODM DX (Color)	100%-10%	1-128	1-128
		nPOD GFX	nPOD GFX (Color)	100%-10%	1-128	1-128
		nWSX LV	nWSX LV DX	100%-10%	1-128	1-128
		nWSX PDT LV	nWSX PDT LV DX	100%-10%	1-128	1-128

*Recommended dimmer

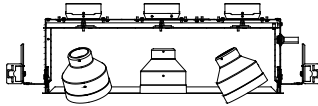
**Maximum quantity might be different if used with Lutron power packs for AC line switching

***For better dimming performance, adjust the dimming voltage to 1V or above

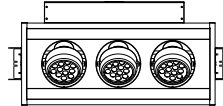


PERFORMANCE SERIES MULTI-SPOT® & DESIGNER COVE™ LED-DIMMING

**DCS16; DCSR16;
DCS30; DCSR30**



**MSS16; MSSR16;
MSS30; MSSR30;**



COMPATIBLE DIMMERS FOR USE WITH PERFORMANCE SERIES MULTI-SPOT® & DESIGNER COVE™ LED FIXTURES

- Electronic low voltage dimmers require a neutral wire in the wall box
- 0-10V dimming may require a separate relay module to turn fixture on/off
- Indy LED L-Series fixtures are capable of dimming using IEC 60929 0-10V control compliant dimmers

Manufacturer	Product	Part Number	Control Range	Fixtures Per Dimmer
				120V & 277V
Schneider Electric	C-Bus	0-10V Dimming System	100%-5%	1-25
	Nova	NFTV (0-10V)	100%-12%	1-9
Lutron	Nova T	NTFTV (0-10V)	100%-12%	1-9
	Diva	DVTV (0-10V)	100-12%	1-9
Leviton	Illumatech	IP710-DLZ (0-10V)	100%-5%	1-20