



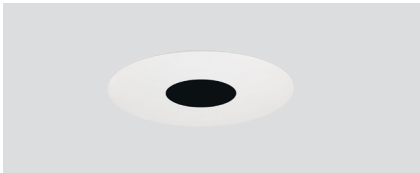
TRIM STYLES



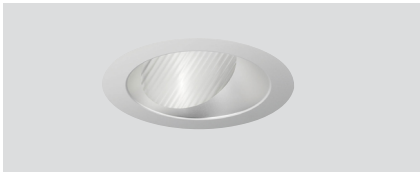
Deep Reflector



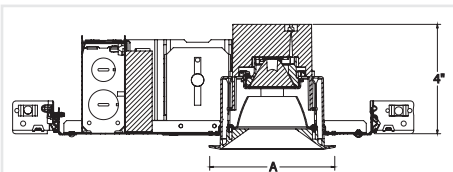
Bevel



Pinhole



Lensed Wall Wash



A Dimension:
Self Flanged: 4.625"
Flangeless: 3.875"

FEATURES

AFFORDABLE & ELEGANT PRECISION RECESSED

- Complete family of recessed downlight, adjustable, and wall wash luminaires
- Available with reflector, bevel and pinhole trims
- Coordinated apertures with Aculux AX3 family

QUIET AND GLARE FREE APERTURES

- Deep source regression with 45-degree visual cutoff
- Total Internal Reflection (TIR) Optics in four (4) beam spreads

EXCELLENT PERFORMANCE

- Up to 1500 lumens delivered!
- Exceptionally consistent color with < 2SDCM
- Excellent color rendition with 80+ CRI | 90+ CRI Available
- WarmDim® option mimics halogen dimming (3000K - 1800K)



PERFORMANCE

Static White*

LUMEN PACKAGE	WATTS IN	DELIVERED LUMENS	EFFICACY (LPW)
04LM	5	492	98
08LM	8	854	107
12LM	12	1294	108
15LM	16	1605	100

WarmDim®

LUMEN PACKAGE	WATTS IN	DELIVERED LUMENS	EFFICACY (LPW)
08LM	12	828	68
10LM	16	1070	67

*Performance with NT3DP at 3000K | 80CRI

Actual performance may differ as a result of end-user environment and application. All values are design or typical values, measured under laboratory conditions at 25°C

FLANGE STYLES



Flanged



Flangeless (Gypsum)



ORDERING INFORMATION

EXAMPLE: INIT3 D 15LM 30K 90CRI 25D EZ1 MVOLT NT3DP CD SF

Housing Style	Lumens	CCT	CRI	Beam	Driver	Voltage ⁴	Ratings	Options
INIT3 D New Construction Downlight & Wall Wash	Static White							
	04LM¹ 400 lumens	27K 2700K	80CRI	18D 18° beam	FPC Phase cut dim (1% min)	120	(blank) Non-IC Rated	NLIGHT⁶ nLight Dimming
	08LM 800 lumens	30K 3000K	90CRI²	25D 25° beam	EZ1 eldoLED 0-10V dim (1% min)	277	CP⁵ Chicago Plenum	E5WCPR⁷ Emergency 5W battery pack with remote test switch, T20 compliant
INIT3 DR Remodel Downlight & Wall Wash	12LM 1200 lumens	35K 3500K		35D 35° beam	ECOS2³ Lutron 2-wire (1% min)	MVOLT (120-277)	ICAT⁵ IC Rated, Air-tight	
	15LM 1500 lumens	40K 4000K		50D 50° beam	ECOD³ Lutron EcoSystem (1% min)			
	WarmDim®							
	08LM 800 Lumens	WDIM HALR 3000K - 1800K	90CRI	25D 25° beam				
	10LM⁹ 1000 lumens			35D 35° beam				
				50D 50° beam				

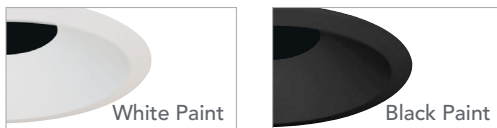
Downlight Trim	Reflector Finish	Flange Style	Trim Lens Environment	Ceiling Installation
Reflector NT3DP Deep Reflector 	W White Paint CD Clear Diffuse CS Clear Specular BS Black Specular WTD Wheat Diffuse	Flanged SF Self Flanged (same finish as reflector) WHSF Self Flanged, White Painted Flange (not available with W finish) Flangeless⁸ FM Flangeless	(blank) Open Damp Location WSOL Solite Wet Location	Flanged (blank) Ceiling 0.5" - 1.5" Flangeless (Gypsum) NT3FMA Ceiling 0.5" - 1.5"
Bevel NT3DBV BD Bevel Downlight 	Finish & Flange Style		(blank) Open Damp Location WSOL Solite Wet Location	Flanged (blank) Ceiling 0.5" - 1.5" Flangeless (Gypsum) NT3FMA Ceiling 0.5" - 1.5"
Pinhole NT3DPIN BD 1 3/4" Pinhole Downlight 	Flanged WHSF White, Flanged BLSF Black, Flanged Flangeless⁸ WHFM White, Flangeless BLFM Black, Flangeless			

Wall Wash Trim	Reflector Finish	Flange Style	Environment	Ceiling Installation
Lensed Wall Wash NT3WW Lensed Wall Wash *Must specify 25D beam with wall wash trim	W White Paint CD Clear Diffuse CS Clear Specular BS Black Specular WTD Wheat Diffuse	Flanged SF Self Flanged (same finish as reflector) WHSF Self Flanged, White Painted Flange (not available with W finish) Flangeless⁸ FM Flangeless	(blank) Damp Location	Flanged (blank) Ceiling 0.5" - 1.5" Flangeless (Gypsum) NT3FMA Ceiling 0.5" - 1.5"

REFLECTOR & WALL WASH FINISHES

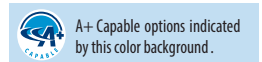


BEVEL & PINHOLE FINISHES



ORDERING NOTES

- 1 04LM available with FPC driver only.
- 2 90CRI not available on 40K CCT.
- 3 ECOS2 & ECOD not available with ICAT at 15LM. ECOS2 not available with WDIM with ICAT.
- 4 MVOLT standard on EZ1, ECOD unless NLIGHT specified. Must be 120 for ECOS2, FPC.
- 5 CP & ICAT available on new construction only.
- 6 NLIGHT available on Non-IC with EZ1 only. Must specify 120 or 277 volts.
- 7 E5WCPR not available with remodel, ICAT, or CP.
- 8 For flangeless trims, must specify flangeless installation (NT3FMA).
- 9 10LM WDIM not available with ICAT or CP.



PS Design2Ship Quick Ship Program:
Options in green text qualify for Design2Ship — 5 business days from order entry to ship. Refer to Design2Ship Brochure for complete program details.
Maximum Order Quantity: 50 units for housings; 25 units for trims.



ACCESSORIES

Beam Control Lenses & Filters		Replacement Optics		Optional Installation Accessories	
Color Filters CGF 200 PINK Medium Pink CGF 200 WRED Warm Red CGF 200 DLTLBLUE Daylight Blue CGF 200 MBLU Medium Blue CGF 200 MAMB Medium Amber CGF 200 MGRN Medium Green		Dichroic Lens DGF 200 DRED Red DGF 200 MGRN Medium Green DGF 200 MBLU Medium Blue DGF 200 DYEL Yellow DGF 200 MAGEN Magenta DGF 200 CYAN Blue Green		Static White Optics NT3OPT/18D 18° beam NT3OPT/25D 25° beam NT3OPT/35D 35° beam NT3OPT/50D 50° beam WarmDim® Optics NT3WDOPT/25D 25° beam NT3WDOPT/35D 35° beam NT3WDOPT/50D 50° beam	Bar Hangers HB26 26" C-Channel Bar Hangers HB50 50" C-Channel Bar Hangers LB27 27" Linear Bar Hangers <i>Note: Fixture supplied with residential style bar hangers (except when specified with battery)</i>
Beam Control Lens DIFF 200 Diffuse Spread Lens SOLITE 200 Solite Uniformity Lens PRISM 200 Prismatic Lens LSPREAD 200 Linear Spread Lens HCLBL 200 Hexcell Louver		UV Filter & Color Correction UVF 200 UV Filter Lens DCCF 200 HAL4250 Daylight Blue Correction			

PRODUCT SPECIFICATIONS

FIELD INTERCHANGEABLE LED LIGHT ENGINE

- <2SDCM Binning
- 2700K | 3000K | 3500K | 4000K CCT
- 80+ CRI available for all CCTs
- 90+ CRI available for 2700K, 3000K, 3500K
- WarmDim mimics halogen, with CCT shifting from 3000K to 1800K when dimmed.
- Future proof and easy to maintain - serviceable from below the ceiling

OPTICAL SYSTEM

- 45° visual cutoff to source and source image
- Field interchangeable TIR optics from 18° FWHM to 50° FWHM provide smooth, striation-free beams
- Accommodates 1 beam control lens or filter

HIGH QUALITY TRIMS

- Available with die cast bevels, pinholes, and angle cut reflectors
- Flanged and flangeless for gypsum
- Must specify NT3FMA for gypsum flangeless installation

FIELD REPLACEABLE DRIVER

- Accommodates 120-277V input and multiple control protocols
- Dims without perceived flicker to <1% depending on driver specified
- Field replaceable from below the ceiling
- >0.9 Power Factor

BUY AMERICAN

- This product is assembled in the USA and meets the Buy America(n) government procurement requirements under FAR, DFARS and DOT.
- Please refer to www.acuitybrands.com/resources/buy-american for additional information.

WARRANTY & RATED LIFE

- LED is rated for >50,000 hours at 70% lumen maintenance
- 5- year limited warranty. Complete warranty terms located at: www.acuitybrands.com/support/customer-support/terms-and-conditions

EMERGENCY BATTERY

- Provides a minimum of 400 lumens (3000K, 80CRI) for minimum duration of 90 minutes.
- Above ceiling access required.
- Supplied with remote test switch
- CEC T20 Compliant

CEILING THICKNESS

- Accommodates ½" to 1 1/2" ceiling thickness

INSTALLATION

- New construction or remodel (install from below) are available.
- Residential style bar hanger provided with all new construction housings except when specified with emergency battery.
- Vertically adjustable mounting brackets (butterfly brackets) are provided on non-ICAT new construction housings.

JUNCTION BOX

- New construction housings are rated for (4) No. 12 AWG 90°C through branch circuit conductors (excludes ECOS2 & ECOD drivers)
- New Construction housings include (6) ½", (1) ¾", (4) Non-metallic sheathed cable knock-outs.
- Remodel housings feature (8) ½" knockouts suitable for daisy chain wiring.
- Push-in electrical connectors for field connections.

CODES & LABELS

- UL & cUL listed for through branch wiring (excludes ECOS2 & ECOD), damp location. Listed for wet location with WSOL option.
- ICAT meets energy code air leakage requirements per ASTM E283
- ENERGY STAR® certified with NT3DP and NT3DBV (excluding 50D beam) trims for static white @ 80CRI and NT3DP trims (excluding: BS finish, ECOD & ECOS2 drivers) for warmdim.
- Title 24, Part 6: JA-8 Compliant with 90CRI and ICAT. Refer to CEC T24 website for compatible trims.
- ICAT housings are rated for direct contact with insulation
- Low Density open-cell Spray Foam Insulation Compatible: 04LM|08LM|12LM (ICAT option) are compatible with foam insulation with an R-Value of 4.3 per inch or less (excludes ECOS2, ECOD, & WDIM)
- Medium Density closed-cell Spray Foam Insulation Compatible: 04LM|08LM (ICAT option) are compatible with foam insulation with an R-Value of 6.8 per inch or less (excludes ECOS2, ECOD, & WDIM)
- Union made

A+ CAPABLE LUMINAIRE

This item is an A+ capable luminaire, which has been designed and tested to provide consistent color appearance and out-of-the-box control compatibility with simple commissioning.

- All configurations of this luminaire meet the Acuity Brands' specification for chromatic consistency
- This luminaire is part of an A+ Certified solution for nLight® control networks when ordered with drivers marked by a shaded background on ordering information*

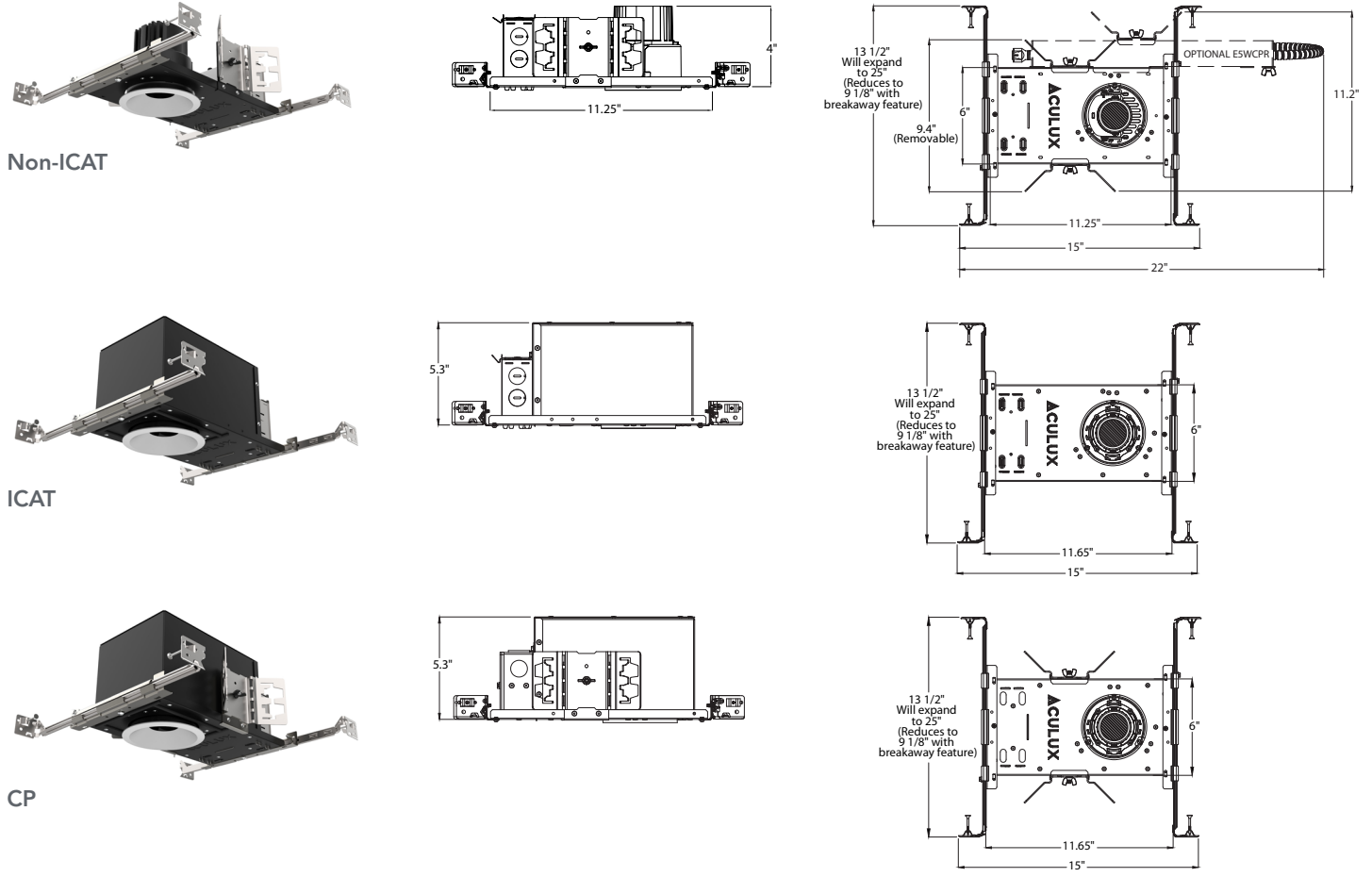
To learn more about A+, visit www.acuitybrands.com/aplus.



DIMENSIONS

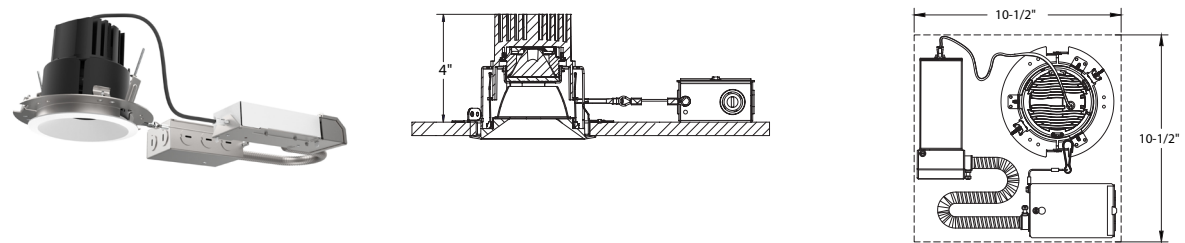
NEW CONSTRUCTION

Ceiling Cutout: 4" Dia. (Refer to installation instructions for flangeless ceiling cutout)
Ceiling Thickness Range: 1/2" – 1 1/2" (see ordering matrix)



REMODEL (install from below)

Ceiling Cutout: 4.25" Dia. (Refer to installation instructions for flangeless ceiling cutout)
Ceiling Thickness Range: 1/2" – 1 1/2" (see ordering matrix)



ELECTRICAL SPECIFICATIONS

LUMEN PACKAGE	Static White				WarmDim®							
	04LM		08LM		12LM		15LM		08LM		10LM	
Voltage	120	277	120	277	120	277	120	277	120	277	120	277
Input Watts	4.6	4.8	7.7	7.8	11.9	12.3	16.1	16.4	12.1	13.2	16.1	17.0
Input Current	0.04	0.02	0.06	0.03	0.1	0.05	0.13	0.06	0.10	0.06	0.14	0.07
Frequency	50/60HZ		50/60HZ		50/60HZ		50/60HZ		50/60HZ		50/60HZ	
Power Factory	.9 MIN.		.9 MIN.		.9 MIN.		.9 MIN.		.9 MIN.		.9 MIN.	



PHOTOMETRICS

Tested in accordance to IESNA LM79

18 Degree Beam

INIT3 D 12LM 30K 80CRI 18D EZ1 MVOLT NT3DP CD, input watts: 11.9, delivered lumens: 1234, LPW: 103.7, S/MH: 0.30, test no.: 19-951-01

0° 30° 60° 70° 80° 90°	CP Summary	Zonal Lumen Summary				Coefficients of Utilization												Cone of Light			Luminance (cd/sq.m)	
		0°	Zone	Lumens	% Fixture	pf	20%						50%						Mounting Height	Initial FC Center Beam	Beam Diameter	Average Luminance
							pc	50%	30%	10%	50%	30%	10%	50%	30%	10%						
0°	7,658	0°-30°	1,185	96%	0	119	119	119	116	116	116	111	111	111	6.0	212.7	1.9	45°	2,028			
5°	6,002	0°-40°	1,220	99%	1	113	111	109	111	109	108	107	106	104	8.0	119.7	2.5	55°	1,648			
15°	1,653	0°-60°	1,233	100%	2	108	105	102	106	104	101	103	101	99	10.0	76.6	3.1	65°	231			
25°	493	0°-90°	1,234	100%	3	103	100	97	102	99	96	100	97	95	12.0	53.2	3.8	75°	126			
35°	48				4	99	96	93	98	95	92	96	93	91	14.0	39.1	4.4	85°	0			
45°	9				5	96	92	89	95	91	89	93	90	88								
55°	6				6	93	89	86	92	88	85	91	87	85								
65°	1				7	90	86	83	89	85	83	88	85	82								
75°	0				8	87	83	80	87	83	80	86	82	80								
85°	0				9	85	81	78	84	81	78	84	80	78								
90°	0				10	82	79	76	82	78	76	81	78	76								

25 Degree Beam

INIT3 D 12LM 30K 80CRI 25D EZ1 MVOLT NT3DP CD, input watts: 11.9, delivered lumens: 1238, LPW: 104.0, S/MH: 0.51, test no.: 19-951-08

0° 30° 60° 70° 80° 90°	CP Summary	Zonal Lumen Summary				Coefficients of Utilization												Cone of Light			Luminance (cd/sq.m)	
		0°	Zone	Lumens	% Fixture	pf	20%						50%						Mounting Height	Initial FC Center Beam	Beam Diameter	Average Luminance
							pc	50%	30%	10%	50%	30%	10%	50%	30%	10%						
0°	4,273	0°-30°	1,179	95%	0	119	119	119	116	116	116	111	111	111	6.0	118.7	3.3	45°	1,936			
5°	4,037	0°-40°	1,224	99%	1	113	111	109	111	109	107	107	105	104	8.0	66.8	4.4	55°	1,563			
15°	2,191	0°-60°	1,237	100%	2	107	104	102	106	103	100	102	100	98	10.0	42.7	5.4	65°	231			
25°	478	0°-90°	1,238	100%	3	102	99	96	101	98	95	99	96	94	12.0	29.7	6.5	75°	126			
35°	73				4	98	94	91	97	93	90	95	92	89	14.0	21.8	7.6	85°	187			
45°	8				5	94	90	87	93	90	87	92	88	86								
55°	6				6	91	87	83	90	86	83	89	85	83								
65°	1				7	88	83	80	87	83	80	86	82	80								
75°	0				8	85	80	77	84	80	77	83	80	77								
85°	0				9	82	78	75	82	78	75	81	77	75								
90°	0				10	79	75	73	79	75	72	78	75	72								

35 Degree Beam

INIT3 D 12LM 30K 80CRI 35D EZ1 MVOLT NT3DP CD, input watts: 12.0, delivered lumens: 1294, LPW: 107.8, S/MH: 0.60, test no.: 19-951-15

0° 30° 60° 70° 80° 90°	CP Summary	Zonal Lumen Summary				Coefficients of Utilization												Cone of Light			Luminance (cd/sq.m)	
		0°	Zone	Lumens	% Fixture	pf	20%						50%						Mounting Height	Initial FC Center Beam	Beam Diameter	Average Luminance
							pc	50%	30%	10%	50%	30%	10%	50%	30%	10%						
0°	3,104	0°-30°	1,182	91%	0	119	119	119	116	116	116	111	111	111	6.0	86.2	4.0	45°	1,613			
5°	2,962	0°-40°	1,279	99%	1	112	110	108	110	108	106	106	105	103	8.0	48.5	5.4	55°	1,080			
15°	2,022	0°-60°	1,293	100%	2	106	103	100	104	101	99	101	99	97	10.0	31.0	6.7	65°	231			
25°	803	0°-90°	1,294	100%	3	101	97	93	99	96	93	97	94	91	12.0	21.6	8.0	75°	126			
35°	144				4	96	91	88	95	90	87	93	89	86	14.0	15.8	9.4	85°	187			
45°	7				5	91	87	83	90	86	83	89	85	82								
55°	4				6	87	82	79	87	82	79	85	81	78								
65°	1				7	84	79	75	83	78	75	82	78	75								
75°	0				8	80	75	72	80	75	72	79	74	72								
85°	0				9	77	72	69	77	72	69	76	72	69								
90°	0				10	74	69	66	74	69	66	73	69	66								

50 Degree Beam

INIT3 D 12LM 30K 80CRI 50D EZ1 MVOLT NT3DP CD, input watts: 11.9, delivered lumens: 1072, LPW: 90.1, S/MH: 0.65, test no.: 19-951-22

0° 30° 60° 70° 80° 90°	CP Summary	Zonal Lumen Summary				Coefficients of Utilization												Cone of Light			Luminance (cd/sq.m)	
		0°	Zone	Lumens	% Fixture	pf	20%						50%						Mounting Height	Initial FC Center Beam	Beam Diameter	Average Luminance
							pc	50%	30%	10%	50%	30%	10%	50%	30%	10%						
0°	1,952	0°-30°	867	81%	0	119	119	119	116	116	116	111	111	111	6.0	54.2	4.6	45°	3,157			
5°	1,849	0°-40°	1,038	97%	1	111	109	107	109	107	105	105	104	102	8.0	30.5	6.1	55°	2,188			
15°	1,336	0°-60°	1,070	100%	2	105	101	98	103	100	97	100	97	95	10.0	19.5	7.6	65°	578			
25°	720	0°-90°	1,072	100%	3	98	94	90	97	93	90	94	91	88	12.0	13.6	9.1	75°	315			
35°	263				4	93	88	84	92	87	83	90	86	83	14.0	10.0	10.6	85°	187			
45°	14				5	88	82	79	87	82	78	85	81	78								
55°	8				6	83	78	74	82	77	74	81	76	73								
65°	2				7	79	73	70	78	73	69	77	72	69								
75°	1				8	75	70	66	74	69	66	73	69	65								
85°	0				9	71	66	62	71	66	62	70	65	62								
90°	0				10	68	63	59	68	63	59	67	62	59								

LUMEN | CBCP MULTIPLIERS

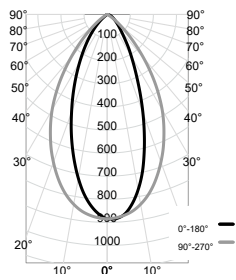
CCT	80+ CRI	90+ CRI	04LM	08LM	10LM	12LM	15LM
2700K	0.96	0.83	0.38	0.66	0.85	1.00	1.24
3000K	1.00	0.86	*Refer to website for additional photometry (alternate trims, CCT/CRI, lumen packages)				
3500K	1.03	0.89					
4000K	1.05	-					
WDIM HALR	-	0.97					



PHOTOMETRICS

Tested in accordance to IESNA LM79

INIT3 D 12LM 30K 80CRI 25D EZ1 MVOLT NT3WW CD, input watts: 12.7, delivered lumens: 714, LPW: 58.3, S/MH: 0.65, test no.: 20-081-01



CP Summary				Zonal Lumen Summary				Coefficients of Utilization										Luminance (cd/sq.m)	
0°	90°	Zone	Lumens	% Fixture	pf	80%					20%					Average Luminance			
					pc	50%	30%	10%	50%	30%	10%	50%	30%	10%	45°	55°			
0°	885	0° - 30°	471	64%	0	119	119	119	116	116	111	111	111	111	15,948	10,825			
5°	868	0° - 40°	620	84%	1	110	107	105	108	105	103	104	102	100	8,483	7,619			
15°	619	0° - 60°	725	98%	2	102	97	94	100	96	93	97	93	91	1,870				
25°	308	0° - 90°	741	100%	3	94	89	85	93	88	84	90	86	82					
35°	140				4	87	81	77	86	81	76	84	79	76					
45°	69				5	81	75	71	80	75	70	79	74	70					
55°	38				6	76	70	65	75	69	65	74	68	64					
65°	22				7	71	65	60	71	65	60	69	64	60					
75°	12				8	67	61	56	66	60	56	65	60	56					
85°	1				9	63	57	53	63	57	53	62	56	52					
90°	0				10	60	53	49	59	53	49	58	53	49					

FOOTCANDLES ON WALL FROM MULTIPLE FIXTURES

Fixture Distance to Wall		24"								
Fixture Centers (spacing)		24"			30"			36"		
DISTANCE FROM CEILING	1'	5	4	5	4	3	4	4	3	4
	2'	9	9	9	8	7	8	7	6	7
	3'	12	12	12	10	9	10	8	8	8
	4'	13	14	13	11	11	11	9	9	9
	5'	13	13	13	11	11	11	9	9	9
	6'	11	12	11	10	10	10	8	8	8
	7'	9	10	9	8	8	8	7	7	7
	8'	8	8	8	7	7	7	6	6	6
	9'	6	6	6	5	6	5	5	5	5
	10'	5	5	5	5	5	5	4	4	4

Performance listed at 3000K | 80CRI

LUMEN | CBCP MULTIPLIERS

CCT	80+ CRI	90+ CRI
2700K	0.96	0.83
3000K	1.00	0.86
3500K	1.03	0.89
4000K	1.05	-
WDIM HALR	-	0.97

04LM	08LM	10LM	12LM	15LM
0.38	0.66	0.85	1.00	1.24

*Refer to website for additional photometry (alternate trims, CCT/CRI, lumen packages)



DIMMER COMPATIBILITY

Phase Dimming (FPC Driver)

Incandescent, Magnetic Low Voltage and Electronic Low Voltage Dimming

- Dimming range of 100% down to as low as 1% a minimum load of one fixture
- Dimming range and maximum rated load vary depending on dimmer type and model. See maximum load calculations below to identify max number of luminaires per dimmer.

Incandescent (INC) and Magnetic Low Voltage (MLV)

Example: Fixture Rating = 13W
Dimmer Rating = 600W
Equivalent Incandescent Load (EIL) = 50%
(600/13W) X 0.5 = 23 Fixtures per Dimmer

Electronic Low Voltage (ELV)

Example: Fixture Rating = 13W
Dimmer Rating = 600W
Equivalent Incandescent Load (EIL) = 75%
(600/13W) X 0.75 = 34 Fixtures per Dimmer

INCANDESCENT, MLV, ELV WALL DIMMERS

Manf.	Product Family	Series	Type	Min Light(%)
Lutron	Glyder	GLV*	MLV	3
Leviton	SureSlide	6633*	INC	2
Lutron	Diva	DVLV	MLV	6
Lutron	Diva	DV*	INC	2
Lutron	Skylark	SLV*	MLV	4
Leviton	IllumaTech	IPL016-10Z*	INC	4
Leviton	SureSlide	6613*	MLV	3
Lutron	Diva	DVCL	INC	2
Insteon	Keypad Dimmer	2334-232*	INC	2
Insteon	Dimmer Switch	2477D*	INC	2
Control4	Forward Phase Dimmer	C4-FPD 120*	INC	2
Lutron	Nova	NTELV*	ELV	6
Lutron	Diva	DVELV	ELV	3
Lutron	Maestro	MAELV*	ELV	6
Leviton	Vizia	VPE06-1LX	ELV	3
Leviton	IllumaTech	IPE04*	ELV	6
Lutron	RadioRA2	RRD-6NA	PHA	2
Control4	Adaptive Phase Dimmer	C4-APD 120*	PHA	2

INTEGRATED CONTROL SYSTEMS

Manf.	Product Family	Series	Type	Min Light(%)
Lutron	LP	LP-RPM-4U*	INC	6
Lutron	LP	LP-RPM-4A	PHA	2
Lutron	GrafikEye QS	QSGRJ-3P*	PHA	2
Lutron	GrafikEye QS	PHPM-PA-120	PHA	2
Lutron	HomeWorks QS	PHPM-PA-120	PHA	2
Lutron	HomeWorks QS	HW-RPM-4A	PHA	2
Acuity	nLight nSP5PCD ELV	nSP5PCD*	ELV	2
Insteon	Micro Module Dimmer	2442-222*	INC	2
Control4	8 Ch Dimmer	C4-DIN-8DIM-E	PHA	2

0-10V Dimming (EZ1 Driver)

WALL DIMMERS

Manf.	Product Family	Series	Type	-EZ1 Min Light(%)
Lutron	Nova T	NTFTV* +	0-10V	1
Lutron	Nova T	NTSTV-DV*	0-10V	1
Lutron	Nova T	NFTV* +	0-10V	1
ACUITY	SensorSwitch	WSX D WH*	0-10V	1

*: recommended dimmers

+: require a separate relay module to turn fixture on/off

INTEGRATED CONTROL SYSTEMS

Manf.	Product Family	Series	Type	-EZ1 Min Light(%)
Lutron	Energi Tripak	RMJ-5T-DV-B*	0-10V	1
Wattstopper	DLM	LMRC-211*	0-10V	1
Crestron	GreenLight	DIN-4DIMFLV4*	0-10V	1
Leviton	IllumaTech	IP710-DLX	0-10V	1
Lutron	GrafikEyeQS	GRX-TVI*	0-10V	1
Lutron	GrafikEyeQS	GRX-TVI*	0-10V	1
Lutron	HomeworksQS	GRX-TVM2*	0-10V	1