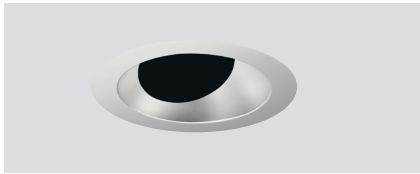




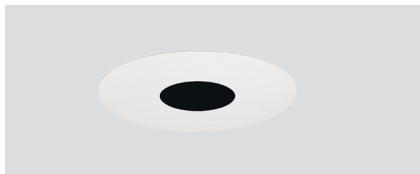
TRIM STYLES



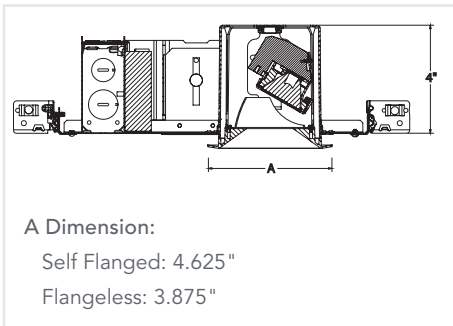
Angle Cut Reflector



Bevel



Pinhole



FEATURES

AFFORDABLE & ELEGANT PRECISION RECESSED

- Complete family of recessed downlight, adjustable, and wall wash luminaires
- Available with reflector, bevel and pinhole trims
- Coordinated apertures with Aculux AX3 family

TOOLLESS AIMING & FIELD INTERCHANGEABLE OPTICS

- 359° horizontal, 35° vertical aiming
- Total Internal Reflection (TIR) Optics in four (4) beam spreads
- Accepts two (2) additional lenses, filters, or other optical accessories

EXCELLENT PERFORMANCE

- Up to 1500 lumens delivered!
- Exceptionally consistent color with < 2SDCM
- Excellent color rendition with 80+ CRI | 90+ CRI Available
- WarmDim® option mimics halogen dimming (3000K - 1800K)



PERFORMANCE

Static White*

LUMEN PACKAGE	WATTS IN	DELIVERED LUMENS	EFFICACY (LPW)
04LM	5	487	97
08LM	8	845	106
12LM	12	1281	107
15LM	16	1588	99

WarmDim®

LUMEN PACKAGE	WATTS IN	DELIVERED LUMENS	EFFICACY (LPW)
08LM	12	820	68

*Performance with NT3AC at 3000K | 80CRI
Actual performance may differ as a result of end-user environment and application.
All values are design or typical values, measured under laboratory conditions at 25°C

FLANGE STYLES



Flanged



Flangeless (Gypsum)



ORDERING INFORMATION

EXAMPLE: INIT3 A 12LM 30K 90CRI 25D EZ1 MVOLT NT3ABV BD WHSF

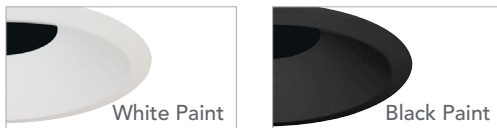
Housing Style	Lumens	CCT	CRI	Beam	Driver	Voltage ⁵	Ratings	Options
INIT3 A New Construction Adjustable	Static White							
	04LM¹ 400 lumens	27K 2700K	80CRI	18D 18° beam	FPC Phase cut dim (1% min)	120	(blank) Non-IC Rated	NLIGHT⁷ nLight Dimming
INIT3 AR Remodel Adjustable	08LM 800 lumens	30K 3000K	90CRI³	25D 25° beam	EZ1 eldoLED 0-10V dim (1% min)	277	CP⁶ Chicago Plenum	E5WCPR⁸ Emergency 5W battery pack with remote test switch, T20 compliant
	12LM 1200 lumens	35K 3500K		35D 35° beam	ECOS2⁴ Lutron 2-wire (1% min)	MVOLT (120-277)	ICAT⁶ IC Rated, Air-tight	
	15LM² 1500 lumens	40K 4000K		50D 50° beam	ECOD Lutron EcoSystem (1% min)			
	WarmDim®							
	08LM 800 Lumens	WDIM HALR 3000K - 1800K	90CRI	25D 25° beam				
				35D 35° beam				
				50D 50° beam				

Adjustable Trim	Reflector Finish	Flange Style	Trim Lens Environment	Ceiling Installation
Reflector NT3AC Angle Cut Reflector (0-35°) 	W White Paint CD Clear Diffuse CS Clear Specular BS Black Specular WTD Wheat Diffuse	Flanged SF Self Flanged (same finish as reflector) WHSF Self Flanged, White Painted Flange (not available with W finish) Flangeless⁹ FM Flangeless	(blank) Open Damp Location WSOL Solite Wet Location	Flanged (blank) Ceiling 0.5" - 1.5" Flangeless (Gypsum) NT3FMA Ceiling 0.5" - 1.5"
Bevel NT3ABV BD Bevel Adjustable (0-35°) 	Finish & Flange Style		(blank) Open Damp Location WSOL Solite Wet Location	Flanged (blank) Ceiling 0.5" - 1.5" Flangeless (Gypsum) NT3FMA Ceiling 0.5" - 1.5"
Pinhole NT3APIN BD 1 3/4" Pinhole Adj (0-35°) 	Flanged WHSF White, Flanged BLSF Black, Flanged Flangeless⁹ WHFM White, Flangeless BLFM Black, Flangeless			

REFLECTOR FINISHES

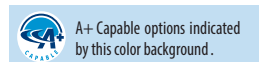


BEVEL & PINHOLE FINISHES



ORDERING NOTES

- 04LM available with FPC driver only.
- 15LM not available with AR or ICAT.
- 90CRI not available on 40K CCT.
- ECOS2 not available with WDIM.
- MVOLT standard on EZ1, ECOD unless NLIGHT specified. Must be 120 for ECOS2, FPC.
- CP & ICAT available on new construction only.
- NLIGHT available on Non-IC with EZ1 only. Must specify 120 or 277 volts.
- E5WCPR not available with remodel, ICAT, or CP.
- For flangeless trims, must specify flangeless installation (NT3FMA).



PS DESIGN2SHIP **Design2Ship Quick Ship Program:**
Options in green text qualify for Design2Ship — 5 business days from order entry to ship. Refer to Design2Ship Brochure for complete program details.
Maximum Order Quantity: 50 units for housings; 25 units for trims.



ACCESSORIES

Beam Control Lenses & Filters		Replacement Optics		Optional Installation Accessories			
Color Filters CGF 200 PINK Medium Pink CGF 200 WRED Warm Red CGF 200 DLTLBLUE Daylight Blue CGF 200 MBLU Medium Blue CGF 200 MAMB Medium Amber CGF 200 MGRN Medium Green Beam Control Lens DIFF 200 Diffuse Spread Lens SOLITE 200 Solite Uniformity Lens PRISM 200 Prismatic Lens LSPREAD 200 Linear Spread Lens HCLBL 200 Hexcell Louver		Dichroic Lens DGF 200 DRED Red DGF 200 MGRN Medium Green DGF 200 MBLU Medium Blue DGF 200 DYEL Yellow DGF 200 MAGEN Magenta DGF 200 CYAN Blue Green UV Filter & Color Correction UVF 200 UV Filter Lens DCCF 200 HAL4250 Daylight Blue Correction		Static White Optics NT3OPT/18D 18° beam NT3OPT/25D 25° beam NT3OPT/35D 35° beam NT3OPT/50D 50° beam WarmDim® Optics NT3WDOPT/25D 25° beam NT3WDOPT/35D 35° beam NT3WDOPT/50D 50° beam		Bar Hangers HB26 26" C-Channel Bar Hangers HB50 50" C-Channel Bar Hangers LB27 27" Linear Bar Hangers <i>Note: Fixture supplied with residential style bar hangers (except when specified with battery)</i>	

PRODUCT SPECIFICATIONS

FIELD INTERCHANGEABLE LED LIGHT ENGINE

- <2SDCM Binning
- 2700K | 3000K | 3500K | 4000K CCT
- 80+ CRI available for all CCTs
- 90+ CRI available for 2700K, 3000K, 3500K
- WarmDim® option mimics halogen dimming (3000K - 1800K)
- Future proof and easy to maintain - serviceable from below the ceiling

OPTICAL SYSTEM

- 45° visual cutoff to source and source image
- Field interchangeable TIR optics from 18° FWHM to 50° FWHM provide smooth, striation-free beams
- Accommodates 2 beam control lenses or filters

TOOL-FREE AIMING

- 359° horizontal, 35° vertical aiming
- Numeric indicator marks allow contractor to pre-aim fixtures

HIGH QUALITY TRIMS

- Available with die cast bevels, pinholes, and angle cut reflectors
- Flanged and flangeless for gypsum
- Must specify NT3FMA for gypsum flangeless installation

FIELD REPLACEABLE DRIVER

- Accommodates 120-277V input and multiple control protocols
- Dims without perceived flicker to <1% depending on driver specified
- Field replaceable from below the ceiling
- >0.9 Power Factor

BUY AMERICAN

- This product is assembled in the USA and meets the Buy America(n) government procurement requirements under FAR, DFARS and DOT.
- Please refer to www.acuitybrands.com/resources/buy-american for additional information.

WARRANTY & RATED LIFE

- LED is rated for >50,000 hours at 70% lumen maintenance
- 5- year limited warranty. Complete warranty terms located at: www.acuitybrands.com/support/customer-support/terms-and-conditions

EMERGENCY BATTERY

- Provides a minimum of 400 lumens (3000K, 80CRI) for minimum duration of 90 minutes.
- Above ceiling access required.
- Supplied with remote test switch
- CEC T20 Compliant

CEILING THICKNESS

- Accommodates ½" to 1 1/2" ceiling thickness

INSTALLATION

- New construction or remodel (install from below) are available.
- Residential style bar hanger provided with all new construction housings except when specified with emergency battery.
- Vertically adjustable mounting brackets (butterfly brackets) are provided on non-ICAT new construction housings.

JUNCTION BOX

- New construction housings are rated for (4) No. 12 AWG 90°C through branch circuit conductors (excludes ECOS2 & ECOD drivers)
- New Construction housings include (6) ½", (1) ¾", (4) Non-metallic sheathed cable knock-outs.
- Remodel housings feature (8) ½" knockouts suitable for daisy chain wiring.
- Push-in electrical connectors for field connections.

CODES & LABELS

- UL & cUL listed for through branch wiring (excludes ECOS2 & ECOD), damp location. Listed for wet location with WSOL option.
- ICAT meets energy code air leakage requirements per ASTM E283
- ENERGY STAR® certified with NT3AC and NT3ABV trims for static white and NT3AC trims (excluding BS finish) for warmdim.
- Title 24, Part 6: JA-8 Compliant with 90CRI and ICAT. Refer to CEC T24 website for compliant trims
- ICAT housings are rated for direct contact with insulation
- Low Density open-cell Spray Foam Insulation Compatible: 04LM|08LM|12LM (ICAT option) are compatible with foam insulation with an R-Value of 4.3 per inch or less (excludes ECOS2, ECOD, & WDIM)
- Medium Density closed-cell Spray Foam Insulation Compatible: 04LM|08LM (ICAT option) are compatible with foam insulation with an R-Value of 6.8 per inch or less (excludes ECOS2, ECOD, & WDIM)
- Union made

A+ CAPABLE LUMINAIRE

This item is an A+ capable luminaire, which has been designed and tested to provide consistent color appearance and out-of-the-box control compatibility with simple commissioning.

- All configurations of this luminaire meet the Acuity Brands' specification for chromatic consistency
- This luminaire is part of an A+ Certified solution for nLight® control networks when ordered with drivers marked by a shaded background on ordering information*

To learn more about A+, visit www.acuitybrands.com/aplus.



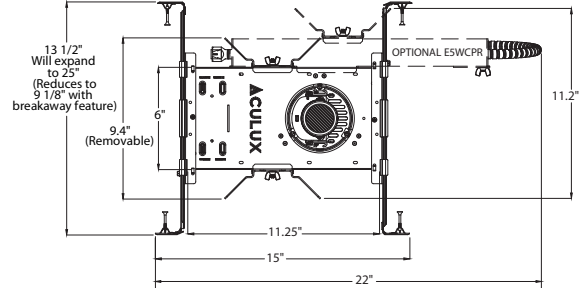
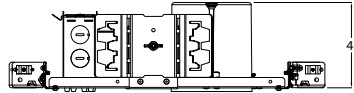
DIMENSIONS

NEW CONSTRUCTION

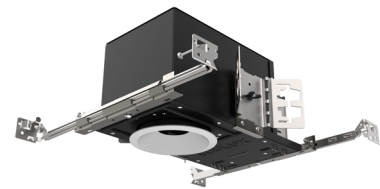
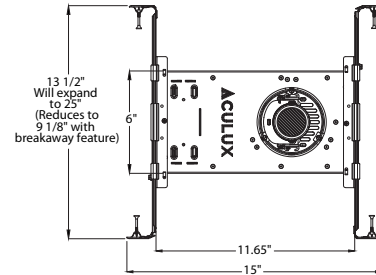
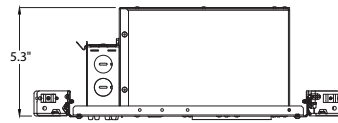
Ceiling Cutout: 4" Dia. (Refer to installation instructions for flangeless ceiling cutout)
Ceiling Thickness Range: 1/2" – 1 1/2" (see ordering matrix)



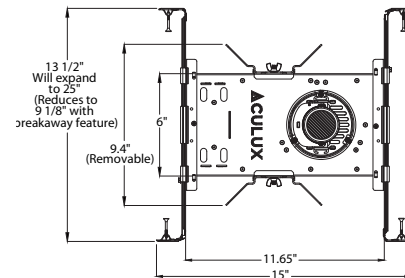
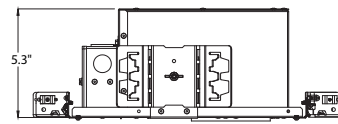
Non-ICAT



ICAT

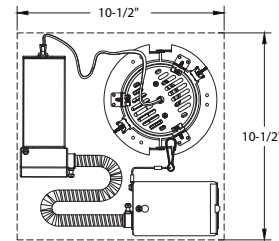
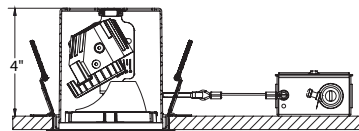


CP



REMODEL (install from below)

Ceiling Cutout: 4.25" Dia. (Refer to installation instructions for flangeless ceiling cutout)
Ceiling Thickness Range: 1/2" – 1 1/2" (see ordering matrix)



ELECTRICAL SPECIFICATIONS

LUMEN PACKAGE	Static White				WarmDim®					
	04LM		08LM		12LM		15LM		08LM	
Voltage	120	277	120	277	120	277	120	277	120	277
Input Watts	4.6	4.8	7.7	7.8	11.9	12.3	16.1	16.4	12.1	13.2
Input Current	0.04	0.02	0.06	0.03	0.1	0.05	0.13	0.06	0.10	0.06
Frequency	50/60HZ		50/60HZ		50/60HZ		50/60HZ		50/60HZ	
Power Factor	.9 MIN.		.9 MIN.		.9 MIN.		.9 MIN.		.9 MIN.	



PHOTOMETRICS

Tested in accordance to IESNA LM79

18 Degree Beam	25 Degree Beam	35 Degree Beam	50 Degree Beam																																																
INIT3 A 12LM 30K 80CRI 18D EZ1 MVOLT NT3AC CD 3000K LEDs, input watts: 11.9, delivered lumens: 1221, LPW: 102.6, test no.: 19-950-01	INIT3 A 12LM 30K 80CRI 25D EZ1 MVOLT NT3AC CD 3000K LEDs, input watts: 11.9, delivered lumens: 1251, LPW: 105.16, test no.: 19-950-07	INIT3 A 12LM 30K 80CRI 35D EZ1 MVOLT NT3AC CD 3000K LEDs, input watts: 11.9, delivered lumens: 1281, LPW: 107.6, test no.: 19-950-13	INIT3 A 12LM 30K 80CRI 50D EZ1 MVOLT NT3AC CD 3000K LEDs, input watts: 11.9, delivered lumens: 1046, LPW: 87.9, test no.: 19-950-19																																																
<p>CP Summary</p> <table border="1"> <tr><th>0°</th></tr> <tr><td>0° 489</td></tr> <tr><td>5° 773</td></tr> <tr><td>15° 1,885</td></tr> <tr><td>25° 5,716</td></tr> <tr><td>35° 5,914</td></tr> <tr><td>45° 939</td></tr> <tr><td>55° 33</td></tr> <tr><td>65° 1</td></tr> <tr><td>75° 0</td></tr> <tr><td>85° 0</td></tr> <tr><td>90° 0</td></tr> </table>	0°	0° 489	5° 773	15° 1,885	25° 5,716	35° 5,914	45° 939	55° 33	65° 1	75° 0	85° 0	90° 0	<p>CP Summary</p> <table border="1"> <tr><th>0°</th></tr> <tr><td>0° 472</td></tr> <tr><td>5° 696</td></tr> <tr><td>15° 2,293</td></tr> <tr><td>25° 4,091</td></tr> <tr><td>35° 4,058</td></tr> <tr><td>45° 1,884</td></tr> <tr><td>55° 115</td></tr> <tr><td>65° 1</td></tr> <tr><td>75° 0</td></tr> <tr><td>85° 0</td></tr> <tr><td>90° 0</td></tr> </table>	0°	0° 472	5° 696	15° 2,293	25° 4,091	35° 4,058	45° 1,884	55° 115	65° 1	75° 0	85° 0	90° 0	<p>CP Summary</p> <table border="1"> <tr><th>0°</th></tr> <tr><td>0° 612</td></tr> <tr><td>5° 991</td></tr> <tr><td>15° 2,107</td></tr> <tr><td>25° 2,948</td></tr> <tr><td>35° 2,944</td></tr> <tr><td>45° 1,745</td></tr> <tr><td>55° 474</td></tr> <tr><td>65° 1</td></tr> <tr><td>75° 0</td></tr> <tr><td>85° 0</td></tr> <tr><td>90° 0</td></tr> </table>	0°	0° 612	5° 991	15° 2,107	25° 2,948	35° 2,944	45° 1,745	55° 474	65° 1	75° 0	85° 0	90° 0	<p>CP Summary</p> <table border="1"> <tr><th>0°</th></tr> <tr><td>0° 852</td></tr> <tr><td>5° 1,016</td></tr> <tr><td>15° 1,376</td></tr> <tr><td>25° 1,545</td></tr> <tr><td>35° 1,543</td></tr> <tr><td>45° 1,190</td></tr> <tr><td>55° 163</td></tr> <tr><td>65° 1</td></tr> <tr><td>75° 0</td></tr> <tr><td>85° 0</td></tr> <tr><td>90° 0</td></tr> </table>	0°	0° 852	5° 1,016	15° 1,376	25° 1,545	35° 1,543	45° 1,190	55° 163	65° 1	75° 0	85° 0	90° 0
0°																																																			
0° 489																																																			
5° 773																																																			
15° 1,885																																																			
25° 5,716																																																			
35° 5,914																																																			
45° 939																																																			
55° 33																																																			
65° 1																																																			
75° 0																																																			
85° 0																																																			
90° 0																																																			
0°																																																			
0° 472																																																			
5° 696																																																			
15° 2,293																																																			
25° 4,091																																																			
35° 4,058																																																			
45° 1,884																																																			
55° 115																																																			
65° 1																																																			
75° 0																																																			
85° 0																																																			
90° 0																																																			
0°																																																			
0° 612																																																			
5° 991																																																			
15° 2,107																																																			
25° 2,948																																																			
35° 2,944																																																			
45° 1,745																																																			
55° 474																																																			
65° 1																																																			
75° 0																																																			
85° 0																																																			
90° 0																																																			
0°																																																			
0° 852																																																			
5° 1,016																																																			
15° 1,376																																																			
25° 1,545																																																			
35° 1,543																																																			
45° 1,190																																																			
55° 163																																																			
65° 1																																																			
75° 0																																																			
85° 0																																																			
90° 0																																																			

Measured NT3AC CD 12LM 30K 80 CRI		FOR HORIZONTAL AIMING ANGLES									FOR VERTICAL AIMING ANGLES							
		0°			30°			30°			35°							
Beam Spread	CBCP	MH	FC	L	W	FC	L	W	D	FC	X	L	W	FC	X	L	W	
18D	7405	6	206	1.8	1.8	134	2.4	2.1	3	103	5.2	3.8	1.8	155	4.3	2.9	1.6	
25D	4273	4	267	1.9	1.9	173	2.6	2.2	2	134	3.5	4.6	1.9	202	2.9	3.3	1.7	
35D	3055	4	191	2.6	2.6	124	3.6	3.0	2	95	3.5	7.8	2.6	144	2.9	5.2	2.3	
50D	1569	4	98	3.2	3.2	64	4.6	3.7	2	49	3.5	12.7	3.2	74	2.9	7.4	2.8	

In vertical aiming applications, aim point (X) is determined by dividing distance from the wall (D) by the tangent of the desired aim angle (A) (0.5774 for 30°, 1.0 for 45°).
 CBCP • Centerbeam candlepower FC • Footcandles at beam center (aim point)

LUMEN | CBCP MULTIPLIERS

CCT	80+ CRI	90+ CRI
2700K	0.96	0.83
3000K	1.00	0.86
3500K	1.03	0.89
4000K	1.05	-
WDIM HALR	-	0.97

04LM	08LM	12LM	15LM
0.38	0.66	1.00	1.24

*Refer to website for additional photometry (alternate trims, CCT/CRI, lumen packages)



DIMMER COMPATIBILITY

Phase Dimming (FPC Driver)

Incandescent, Magnetic Low Voltage and Electronic Low Voltage Dimming

- Dimming range of 100% down to as low as 1% a minimum load of one fixture
- Dimming range and maximum rated load vary depending on dimmer type and model. See maximum load calculations below to identify max number of luminaires per dimmer.

Incandescent (INC) and Magnetic Low Voltage (MLV)

Example: Fixture Rating = 13W
Dimmer Rating = 600W
Equivalent Incandescent Load (EIL) = 50%
(600/13W) X 0.5 = 23 Fixtures per Dimmer

Electronic Low Voltage (ELV)

Example: Fixture Rating = 13W
Dimmer Rating = 600W
Equivalent Incandescent Load (EIL) = 75%
(600/13W) X 0.75 = 34 Fixtures per Dimmer

INCANDESCENT, MLV, ELV WALL DIMMERS

Manf.	Product Family	Series	Type	Min Light(%)
Lutron	Glyder	GLV*	MLV	3
Leviton	SureSlide	6633*	INC	2
Lutron	Diva	DVLV	MLV	6
Lutron	Diva	DV*	INC	2
Lutron	Skylark	SLV*	MLV	4
Leviton	IllumaTech	IPL016-10Z*	INC	4
Leviton	SureSlide	6613*	MLV	3
Lutron	Diva	DVCL	INC	2
Insteon	Keypad Dimmer	2334-232*	INC	2
Insteon	Dimmer Switch	2477D*	INC	2
Control4	Forward Phase Dimmer	C4-FPD 120*	INC	2
Lutron	Nova	NTELV*	ELV	6
Lutron	Diva	DVELV	ELV	3
Lutron	Maestro	MAELV*	ELV	6
Leviton	Vizia	VPE06-1LX	ELV	3
Leviton	IllumaTech	IPE04*	ELV	6
Lutron	RadioRA2	RRD-6NA	PHA	2
Control4	Adaptive Phase Dimmer	C4-APD 120*	PHA	2

INTEGRATED CONTROL SYSTEMS

Manf.	Product Family	Series	Type	Min Light(%)
Lutron	LP	LP-RPM-4U*	INC	6
Lutron	LP	LP-RPM-4A	PHA	2
Lutron	GrafikEye QS	QSGRJ-3P*	PHA	2
Lutron	GrafikEye QS	PHPM-PA-120	PHA	2
Lutron	HomeWorks QS	PHPM-PA-120	PHA	2
Lutron	HomeWorks QS	HW-RPM-4A	PHA	2
Acuity	nLight nSP5PCD ELV	nSP5PCD*	ELV	2
Insteon	Micro Module Dimmer	2442-222*	INC	2
Control4	8 Ch Dimmer	C4-DIN-8DIM-E	PHA	2

0-10V Dimming (EZ1 Driver)

WALL DIMMERS

Manf.	Product Family	Series	Type	-EZ1 Min Light(%)
Lutron	Nova T	NTFTV* +	0-10V	1
Lutron	Nova T	NTSTV-DV*	0-10V	1
Lutron	Nova T	NFTV* +	0-10V	1
ACUITY	SensorSwitch	WSX D WH*	0-10V	1

*: recommended dimmers

+: require a separate relay module to turn fixture on/off

INTEGRATED CONTROL SYSTEMS

Manf.	Product Family	Series	Type	-EZ1 Min Light(%)
Lutron	Energi Tripak	RMJ-5T-DV-B*	0-10V	1
Wattstopper	DLM	LMRC-211*	0-10V	1
Crestron	GreenLight	DIN-4DIMFLV4*	0-10V	1
Leviton	IllumaTech	IP710-DLX	0-10V	1
Lutron	GrafikEyeQS	GRX-TVI*	0-10V	1
Lutron	GrafikEyeQS	GRX-TVI*	0-10V	1
Lutron	HomeworksQS	GRX-TVM2*	0-10V	1