

SLOT IMPORTANT SAFETY INSTRUCTIONS

READ AND FOLLOW ALL SAFETY INSTRUCTIONS! SAVE THESE INSTRUCTIONS AND DELIVER TO OWNER AFTER INSTALLATION

- To reduce the risk of death, personal injury or property damage from fire, electric shock, falling parts, cuts/abrasions, and other hazards please read all warnings and instructions included with and on the fixture box and all fixture labels.
- Before installing, servicing, or performing routine maintenance upon this equipment, follow these general precautions.
- Installation and service of luminaires should be performed by a qualified licensed electrician.
- Maintenance of the luminaires should be performed by person(s) familiar with the luminaires' construction and operation and any hazards involved. Regular fixture maintenance programs are recommended.
- It will occasionally be necessary to clean the outside of the refractor/lens. Frequency of cleaning will depend on ambient dirt level and minimum light output which is acceptable to user. Refractor/lens should be washed in a solution of warm water and any mild, non-abrasive household detergent, rinsed with clean water and wiped dry. Should optical assembly become dirty on the inside, wipe refractor/lens and clean in above manner, replacing damaged gaskets as necessary.
- **DO NOT INSTALL DAMAGED PRODUCT!** This luminaire has been properly packed so that no parts should have been damaged during transit. Inspect to confirm. Any part damaged or broken during or after assembly should be replaced.
- **Recycle:** For information on how to recycle LED electronic products, please visit www.epa.gov.
- These instructions do not purport to cover all details or variations in equipment nor to provide every possible contingency to meet in connection with installation, operation, or maintenance. Should further information be desired or should particular problems arise which are not covered sufficiently for the purchaser's or owner's purposes, this matter should be referred to Acuity Brands Lighting, Inc.



WARNING RISK OF ELECTRIC SHOCK

- ✓ Disconnect or turn off power before installation or servicing.
- ✓ Verify that supply voltage is correct by comparing it with the luminaire label information.
- ✓ Make all electrical and grounded connections in accordance with the National Electrical Code (NEC) and any applicable local code requirements.
- ✓ All wiring connections should be capped with UL approved recognized wire connectors.



WARNING RISK OF BURN

- ✓ Allow lamp/fixture to cool before handling. Do not touch enclosure or light source.
- ✓ Do not exceed maximum wattage marked on luminaire label.
- ✓ Follow all manufacturer's warnings, recommendations and restrictions for: driver type, burning position, mounting locations/methods, replacement and recycling.



CAUTION RISK OF INJURY

- ✓ Wear gloves and safety glasses at all times when removing luminaire from carton, installing, servicing or performing maintenance.
- ✓ Avoid direct eye exposure to the light source while it is on.



CAUTION RISK OF FIRE

- ✓ Keep combustible and other materials that can burn, away from lamp/lens.
- ✓ Do not operate in close proximity to persons, combustible materials or substances affected by heat or drying.

SLOT IMPORTANT SAFETY INSTRUCTIONS



- ✓ Never connect components under load.
- ✓ Do not mount or support these fixtures in a manner that can cut the outer jacket or damage wire insulation.
- ✓ Controls for dimming, auto-sensing, or remote control of a luminaire that are not factory-wired to the luminaire must be checked for compatibility with the luminaire prior to installation. LED fixtures must be powered directly off a switched circuit.
- ✓ Unless individual product specifications deem otherwise: Do not restrict fixture ventilation. Allow for some volume of airspace around fixture. Avoid covering LED fixtures with insulation, foam, or other material that will prevent convection or conduction cooling.
- ✓ Unless individual product specifications deem otherwise: Do not exceed fixtures maximum ambient temperature.
- ✓ Only use fixture in its intended location.
- ✓ LED products are Polarity Sensitive. Ensure proper Polarity before installation.
- ✓ Electrostatic Discharge (ESD): ESD can damage LED fixtures. Personal grounding equipment must be worn during all installation or servicing of the unit.
- ✓ Do not touch individual electrical components as this can cause ESD, shorten lamp life, or alter performance.
- ✓ Some components inside the fixture may not be serviceable. In the unlikely event your unit may require service, stop using the unit immediately and contact an ABL representative for assistance.
- ✓ Always read the fixtures complete installation instructions prior to installation for any additional fixture specific warnings.
- ✓ Always ensure that the electrical distribution system is up to NEC (and any applicable local code) requirements.
- ✓ Verify that power distribution system has proper grounding. Lack of proper earth ground can lead to fixture failure and may void warranty.

Choose either Part 15 OR Part 18 and move to Page 3 Installation Instructions under Delivery. Lithonia Outdoor will always use Part 15. All luminaires that contain electronic devices that generate frequencies above 9kHz from any component within the luminaire comply with Part 15 of the FCC Rules. Operation is subject to the following two conditions:

- (1) This device may not cause harmful interference
- (2) This device must accept any interference received, including interference that may cause undesired operation

This device complies with Part 18 of the FCC Rules but may cause interference with cordless and cell phones, radios, televisions, and other electronic devices. To correct the problem, move the device away from the luminaire or plug into a different outlet. This product may cause interference to radio equipment and should not be installed near maritime safety communications equipment or other critical navigation or communications equipment operating between 0.45-30MHz.

Failure to follow any of these instructions could void product warranties. For a complete listing of product Terms and Conditions, please visit www.acuitybrands.com.

Our Brands	Indoor/Outdoor	Indoor Lighting	Outdoor Lighting	Controls	Daylighting
	Lithonia Lighting	Gotham	American Electric Lighting	DARK TO LIGHT	SunOptics
	Carandini	Mark Architectural Lighting	Antique Street Lamps	LC&D	
	Holophane	Peerless	Hydrel	ROAM	
	RELOC	Renaissance Lighting	Tersen	Sensor Switch	
	Light Concepts	Winona Lighting		Synergy	

Acuity Brands Lighting, Inc. assumes no responsibility for claims arising out of improper or careless installation or handling of its products.

ABL LED General Warnings, Form No. 503.203

**READ AND FOLLOW ALL SAFETY INSTRUCTIONS!
SAVE THESE INSTRUCTIONS AND DELIVER TO OWNER AFTER INSTALLATION**

- To reduce the risk of death, personal injury or property damage from fire, electric shock, falling parts, cuts/abrasions, and other hazards please read all warnings and instructions included with and on the fixture box and all fixture labels.
- Before installing, servicing, or performing routine maintenance upon this equipment, follow these general precautions.
- Installation and service should be performed by a **qualified licensed electrician**.
- Maintenance should be performed by qualified person(s) familiar with the products' construction and operation and any hazards involved. Regular maintenance programs are recommended.
- **DO NOT INSTALL DAMAGED PRODUCT!** This product has been properly packed so that no parts should have been damaged during transit. Inspect to confirm. Any part damaged or broken during or after assembly should be replaced.
- These instructions do not purport to cover all details or variations in equipment nor to provide every possible contingency to meet in connection with installation, operation, or maintenance. Should further information be desired or should particular problems arise which are not covered sufficiently for the purchaser's or owner's purposes, this matter should be referred to Acuity Brands Lighting, Inc.



**WARNING
RISK OF ELECTRIC SHOCK**

- ✓ Disconnect or turn off power before installation or servicing.
- ✓ Verify that supply voltage is correct by comparing it with the product information.
- ✓ Make all electrical and grounded connections in accordance with the National Electrical Code (NEC) and any applicable local code requirements.
- ✓ All wiring connections should be capped with UL approved recognized wire connectors.
- ✓ All unused connector openings must be capped.



**WARNING
RISK OF BURN or FIRE**

- ✓ Do not exceed maximum wattage, ratings, or published operating conditions of product.
- ✓ Do not overload.
- ✓ Follow all manufacturer's warnings, recommendations and restrictions to ensure proper operation of product.



**CAUTION
RISK OF INJURY**

- ✓ Wear gloves and safety glasses at all times when installing, servicing or performing maintenance.

Always read the fixtures complete installation instructions prior to installation for any additional fixture specific warnings.

Failure to follow any of these instructions could void product warranties. For a complete listing of product Terms and Conditions, please visit www.acuitybrands.com.

Our Brands	Indoor/Outdoor Lithonia Lighting Carandini Holograph RELOC Light Concepts	Indoor Lighting Gotham Mark Architectural Lighting Peerless Renaissance Lighting Winona Lighting	Outdoor Lighting American Electric Lighting Antique Street Lamps Hydrel Tersen	Controls DARK TO LIGHT LC&D ROAM Sensor Switch Synergy	Daylighting Sun Optics
------------	--	---	--	---	---------------------------

Acuity Brands Lighting, Inc. assumes no responsibility for claims arising out of improper or careless installation or handling of its products.

ABL LED General Warnings, Form No. 503.203

© 2010 Acuity Brands Lighting, Inc. All rights reserved. 12/01/10



CAUTION: RISK OF PRODUCT DAMAGE

- ✓ Electrostatic Discharge (ESD): ESD can damage product(s). Personal grounding equipment must be worn during all installation or servicing of the unit.
- ✓ Do not touch individual electrical components as this can cause ESD and affect product performance.
- ✓ Do not stretch or use cable sets that are too short or are of insufficient length.
- ✓ Do not tamper with contacts.
- ✓ Do not modify the product.
- ✓ Do not change or alter internal wiring or installation circuitry.
- ✓ Do not use product for anything other than its intended use.
- ✓ If installing latching springs: ensure that the springs are fully engaged prior to moving to next connection.
- ✓ If installing wiring systems: Materials and component parts of a manufacturing wiring system as described in Article 604 of the National Electric Code and Underwriters Laboratories Standard for Safety #183 **MUST BE** installed.

Please see product specific installation instructions for additional warnings or any applicable FCC or other regulatory statements.

Failure to follow any of these instructions could void product warranties. For a complete listing of product Terms and Conditions, please visit www.acuitybrands.com.

Our Brands	Indoor/Outdoor	Indoor Lighting	Outdoor Lighting	Controls	Daylighting
	Lithonia Lighting	Gotham	American Electric Lighting	DARK TO LIGHT	SunOptics
	Carandini	Mark Architectural Lighting	Antique Street Lamps	LC&D	
	Holophane	Peerless	Hydrel	ROAM	
	RELOC	Renaissance Lighting	Tersen	Sensor Switch	
	Light Concepts	Winona Lighting		SynergySwitch	

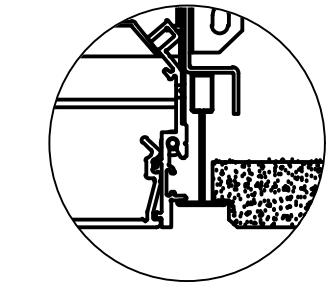
Acuity Brands Lighting, Inc. assumes no responsibility for claims arising out of improper or careless installation or handling of its products.

ABL LED General Warnings, Form No. 503.203

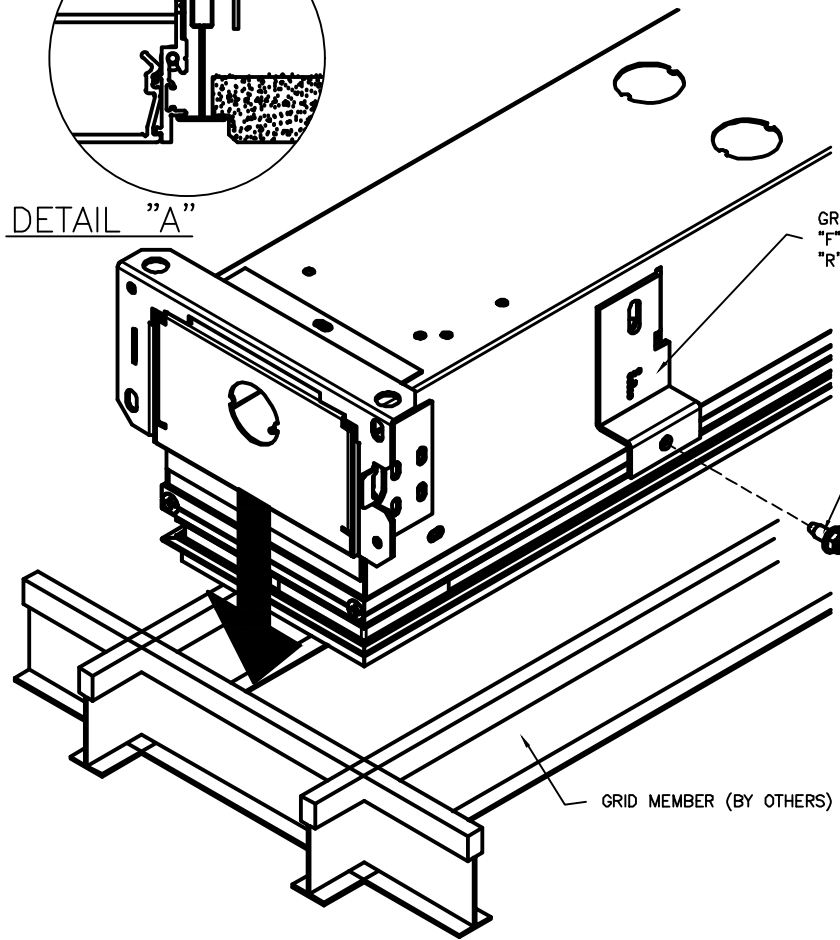
© 2010 Acuity Brands Lighting, Inc. All rights reserved. 12/01/10

This document, the designs and information presented hereon are the confidential and proprietary property of Mark Architectural Lighting and is presented for the sole use of conveying product data to our customer. The use, reproduction or divulging of its contents without the consent or knowledge of Mark Architectural Lighting is prohibited.

Rev.	Description	Date	By
A	ADD WIRE ROUTING PAGE	05/14/2019	JRG
B	GRID CLIP SCREW CHANGE FROM 8 TO 10 MM AND YELLOW BAG ADDED IN NOTES	09/30/2019	MMP
C	ADDED NLIGHT AIR2 ANTENNAE INSTALLATION / REMOVED NOTE STATING NOT TO INSTALL ANYTHING WITHIN 3" OF FIXTURE	01/02/2020	JRL



DETAIL "A"



LAY FIXTURE INTO APPROPRIATE CEILING CONFIGURATION AND ATTACH GRID CLIP TO GRID MEMBER WITH SCREWS (PROVIDED BY OTHERS).

PLEASE NOTE THAT GRID MUST FIT AROUND TRIM. REFERENCE DETAIL "A"

GRID CLIP (FLUSH SHOWN)
"F" INDICATES FLUSH LENS
"R" INDICATES RECESSED LENS

SCREW #10-32 X .250
(4 REQ'D PROVIDED BY OTHERS)

SCREW #8-32 X .250
PFS170051
(4 REQ'D)

SELF-BEND TAB

STRAIGHT ALIGNER KEY
03-558-A-01
(2 REQ'D)

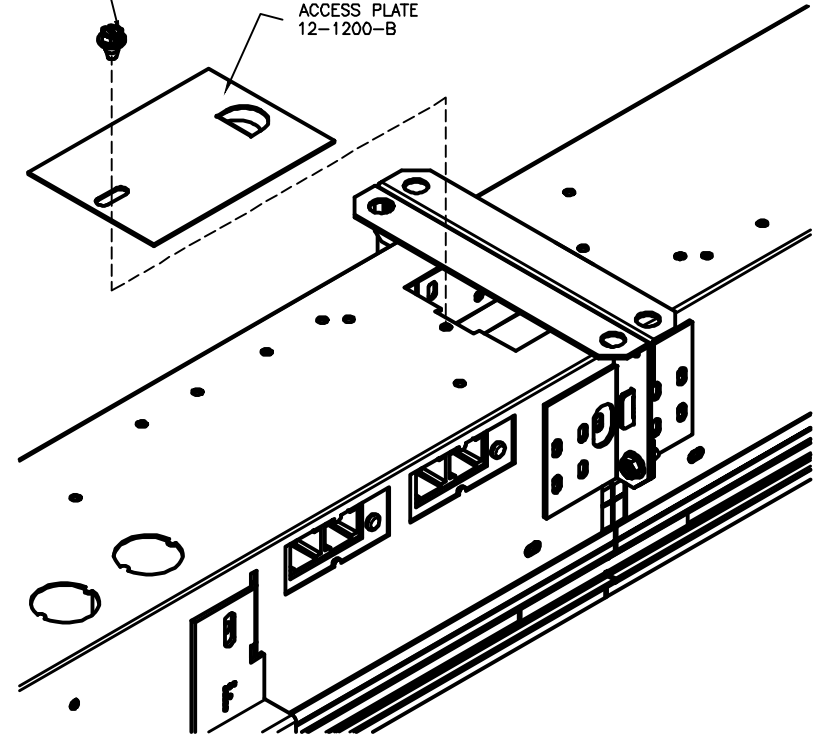
TAB SLOT

1. ALIGN FIXTURE SECTIONS TOGETHER BY MATING SELF-BEND TAB FROM ONE FIXTURE AND SLOT ON ADJOINING FIXTURE.
2. SECURE FIXTURE SECTIONS TOGETHER WITH FOUR SCREWS (INCLUDED IN YELLOW BAG TAPED TO THE HOUSING PROVIDED BY MARK). INSTALL ON OPPOSITE SIDE OF EACH OTHER.

PLEASE NOTE: BE SURE TO ENGAGE STRAIGHT ALIGNING KEYS (INCLUDED IN YELLOW BAG TAPED TO THE HOUSING) AT BOTTOM OF FIXTURE SECTIONS

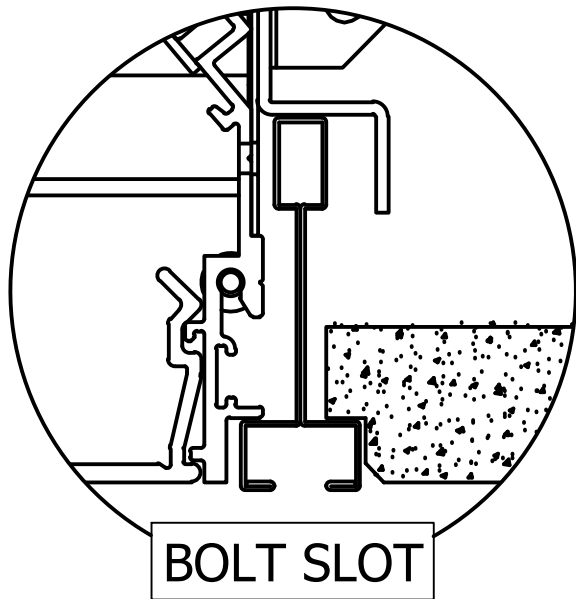
SCREW #8-32 X .250
PFS170051

ACCESS PLATE
12-1200-B

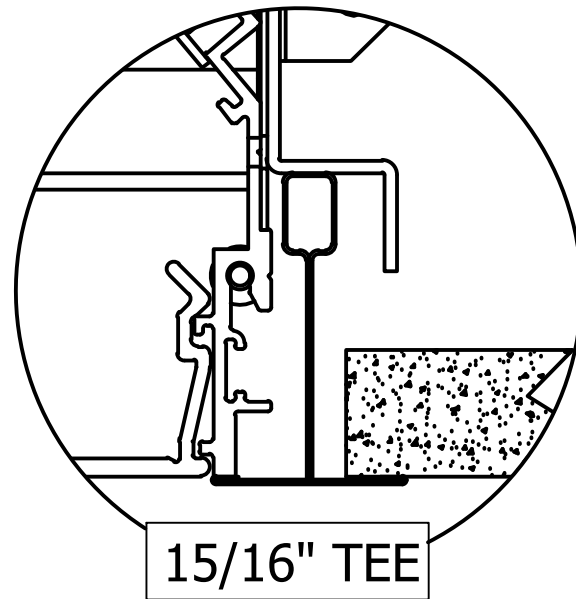


1. MAKE ELECTRICAL CONNECTIONS AND SECURE WITH WIRE NUTS (BY OTHERS)
2. SECURE ACCESS PLATE WITH SCREW (INCLUDED IN YELLOW BAG TAPED TO THE HOUSING PROVIDED BY MARK)

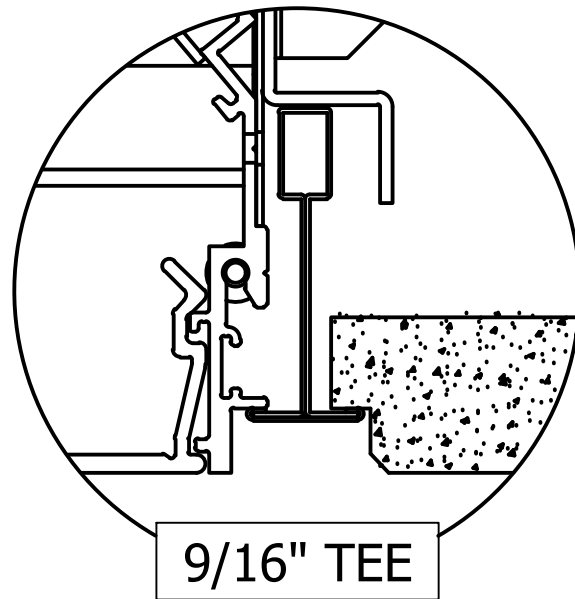
GRID APPLICATIONS



BOLT SLOT



15/16" TEE



9/16" TEE

NOTES:

1. FIXTURE TO BE INSTALLED IN ACCORDANCE WITH ALL APPLICABLE CODES BY A QUALIFIED ELECTRICIAN OR OTHER PERSON FAMILIAR WITH THE CONSTRUCTION AND OPERATION OF THIS PRODUCT AND THE HAZARDS INVOLVED.

MARK
An Acuity Brands Company

Mark Architectural Lighting
3 Kilmer Rd.
Edison, NJ 08817
T (732)985-2600
F (732) 985-8441
marklighting.com

Project: INSTALLATION SHEET SLOT RECESSED LOW PROFILE SERIES			
Distributor:			
By:	Date:	Scale:	NTS
Dwg. no.:	15-1564	Size:	B
SHEET 1 OF 8		Rev:	C

PLEASE NOTE: IT IS THE CONTRACTORS RESPONSIBILITY TO SECURE THE
1/4-20 ROD TO ABOVE STRUCTURE

PLEASE NOTE: BE SURE TO ENGAGE STRAIGHT ALIGNING KEYS (INLCUDED IN YELLOW BAG TAPED TO THE HOUSING) AT BOTTOM OF FIXTURE SECTIONS

1. MAKE ELECTRICAL CONNECTIONS AND SECURE WITH WIRE NUTS (BY OTHERS)
2. SECURE ACCESS PLATE WITH SCREW (INCLUDED IN YELLOW BAG TAPED TO THE HOUSING PROVIDED BY MARK)

NOTES:

1. FIXTURE TO BE INSTALLED IN ACCORDANCE WITH ALL APPLICABLE CODES BY A QUALIFIED ELECTRICIAN OR OTHER PERSON FAMILIAR WITH THE CONSTRUCTION AND OPERATION OF THIS PRODUCT AND THE HAZARDS INVOLVED.

SHEET ROCK APPLICATIONS

"FL" TRIM

DESIGNED FOR FLANGE OR FLANGELESS INSTALLATION IN SHEETROCK TYPE CEILINGS. FIXTURE HOUSINGS MUST BE INSTALLED PRIOR TO CEILING BEING CLOSED UP. DESIGNED FOR 5/8" SHEETROCK ALLOWING APPROX. 1/16" FOR MUDDING AND BLENDING TO FINISHED CEILING IN "GB" APPLICATION.

"GB" TRIM

MARK

An Acuity Brands Company

Mark Architectural Lighting
3 Kilmer Rd.
Edison, NJ 08817
T (732)985-2600
F (732) 985-8441
marklighting.com

Project: **INSTALLATION SHEET**
SLOT RECESSED LOW PROFILE SERIES

Distributor:

By:

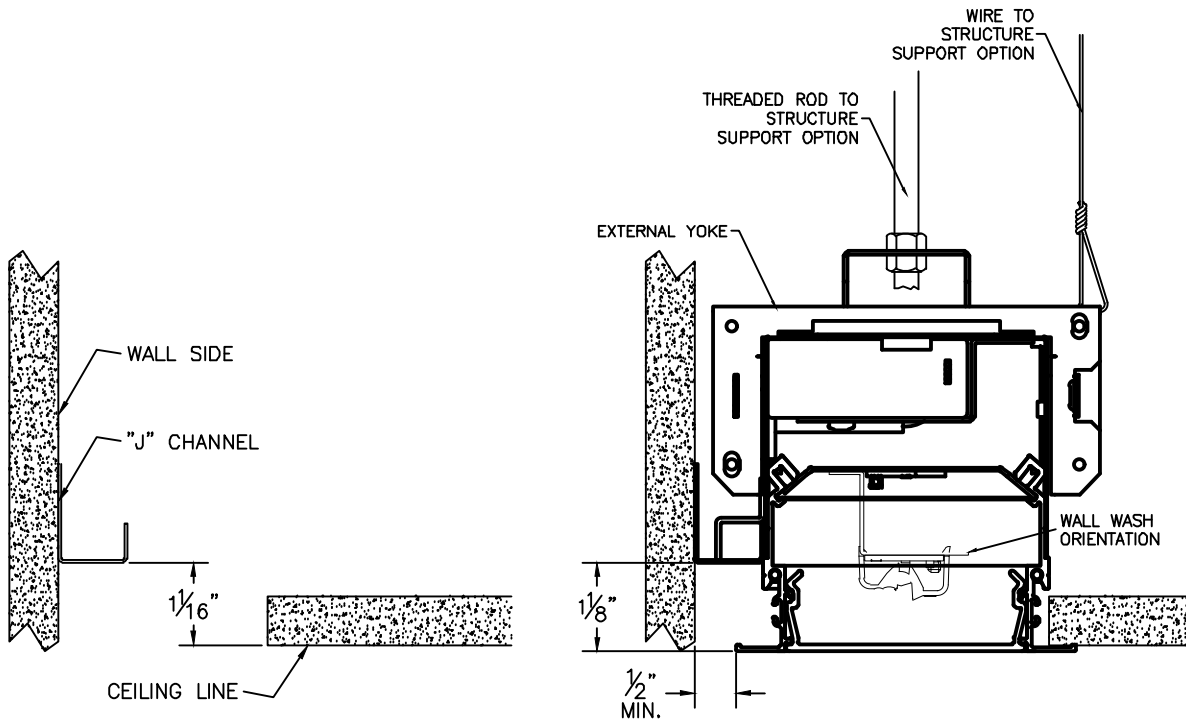
Date:	
-------	--

Scale: N

Dwg. no.: 15-1564
SHEET 2 OF 8

Size:

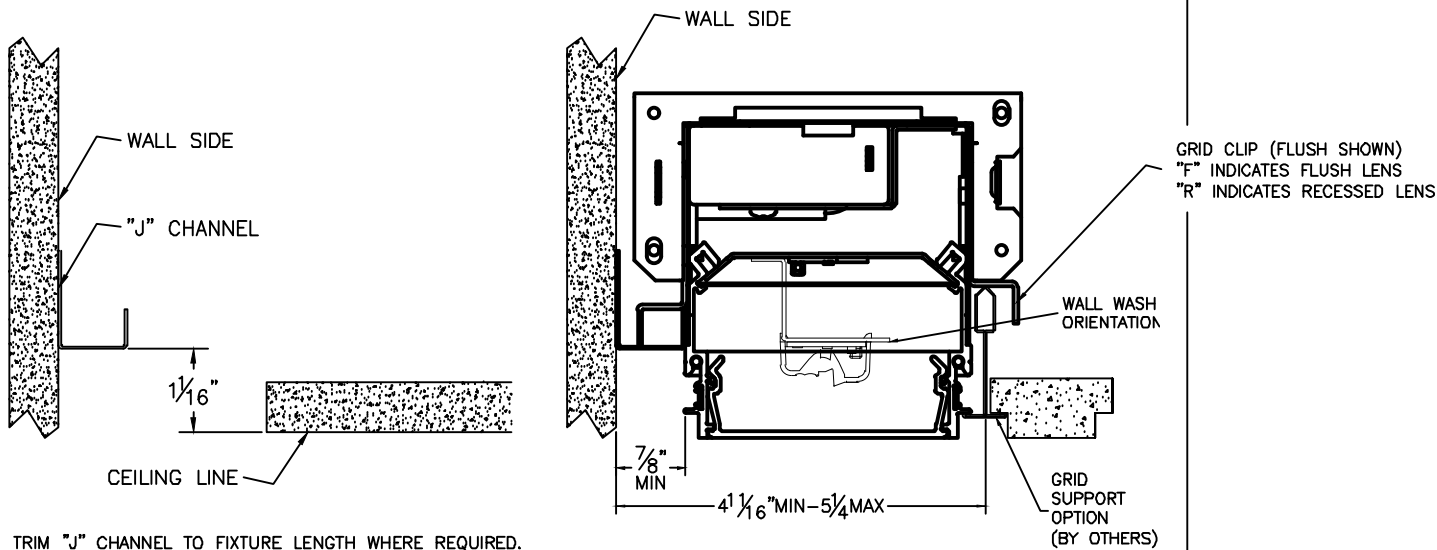
1A. HANGING FIXTURE (WFL) FLANGE APPLICATION



1. TRIM "J" CHANNEL TO FIXTURE LENGTH WHERE REQUIRED. ATTACH "J" CHANNEL TO WALL AT HEIGHT INDICATED ABOVE CEILING LINE (HARDWARE BY OTHERS)
2. HOOK FIXTURE ON "J" CHANNEL AND SLIDE AGAINST WALL
3. SUPPORT ROOM SIDE OF FIXTURE WITH EITHER TIE WIRE OR 1/4-20 THREADED ROD (BY OTHERS) FROM EXTERNAL YOKE.

FIXTURE MUST BE INSTALLED PRIOR TO CEILING

1B. HANGING FIXTURE (WTC) GRID APPLICATION

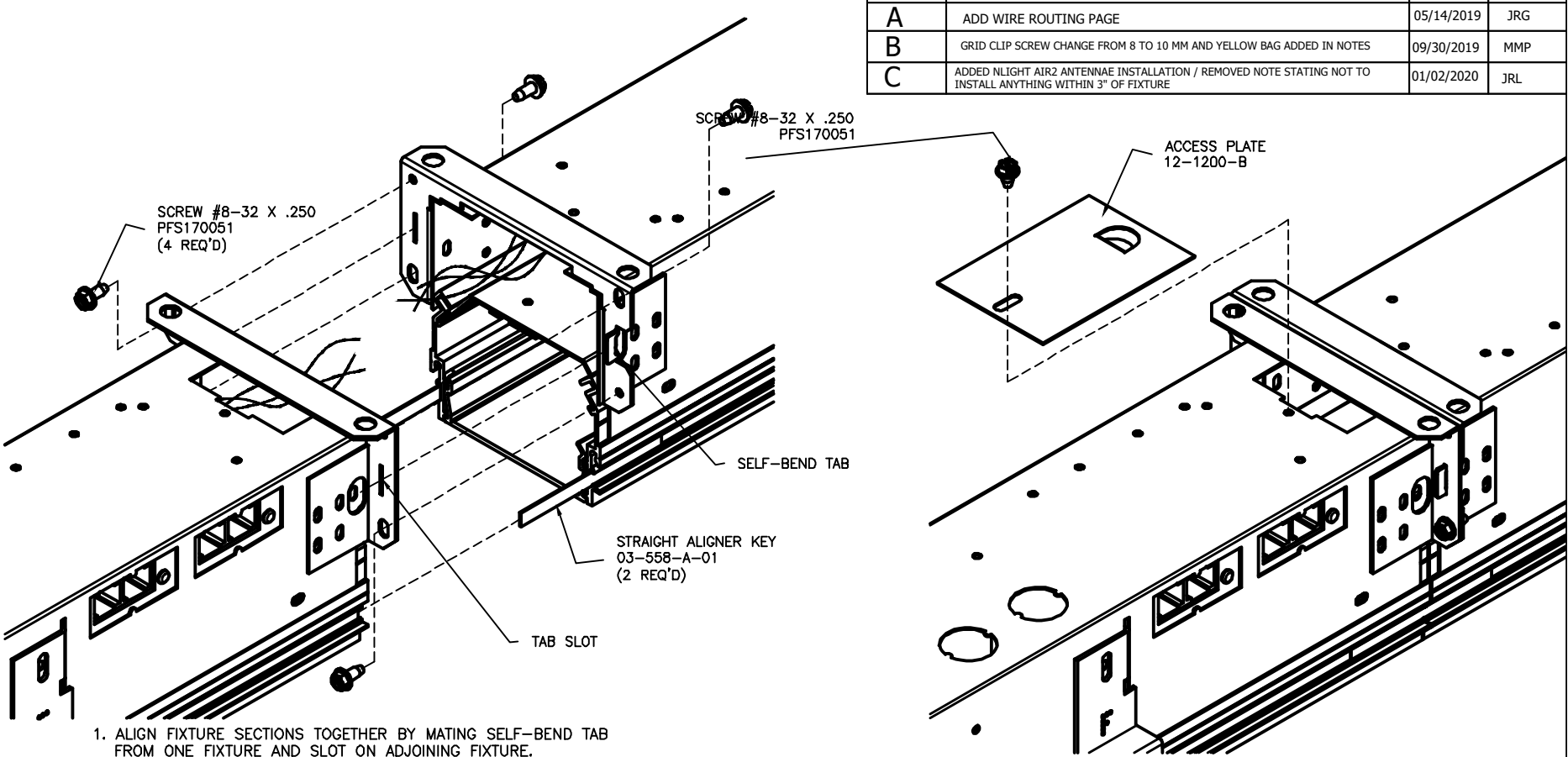


1. TRIM "J" CHANNEL TO FIXTURE LENGTH WHERE REQUIRED. ATTACH "J" CHANNEL TO WALL AT HEIGHT INDICATED ABOVE CEILING LINE (HARDWARE BY OTHERS)
2. HOOK FIXTURE ON "J" CHANNEL AND SLIDE AGAINST WALL
3. SUPPORT ROOM SIDE OF FIXTURE WITH GRID CLIP PROVIDED BY MARK.

PLEASE NOTE THAT GRID MUST FIT AROUND TRIM

FIXTURE MUST BE INSTALLED PRIOR TO CEILING

2. JOINING/WIRING FIXTURE



1. ALIGN FIXTURE SECTIONS TOGETHER BY MATING SELF-BEND TAB FROM ONE FIXTURE AND SLOT ON ADJOINING FIXTURE.
 2. SECURE FIXTURE SECTIONS TOGETHER WITH FOUR SCREWS (INCLUDED IN YELLOW BAG TAPED TO THE HOUSING PROVIDED BY MARK). INSTALL ON OPPOSITE SIDE OF EACH OTHER.
- PLEASE NOTE: BE SURE TO ENGAGE STRAIGHT ALIGNING KEYS (INLCUED IN YELLOW BAG TAPED TO THE HOUSING) AT BOTTOM OF FIXTURE SECTIONS

1. MAKE ELECTRICAL CONNECTIONS AND SECURE WITH WIRE NUTS (BY OTHERS)
2. SECURE ACCESS PLATE WITH SCREW (INCLUDED IN YELLOW BAG TAPED TO THE HOUSING PROVIDED BY MARK)

NOTES:
1. FIXTURE TO BE INSTALLED IN ACCORDANCE WITH ALL APPLICABLE CODES BY A QUALIFIED ELECTRICIAN OR OTHER PERSON FAMILIAR WITH THE CONSTRUCTION AND OPERATION OF THIS PRODUCT AND THE HAZARDS INVOLVED.

TYPE:

MARK
An Acuity Brands Company

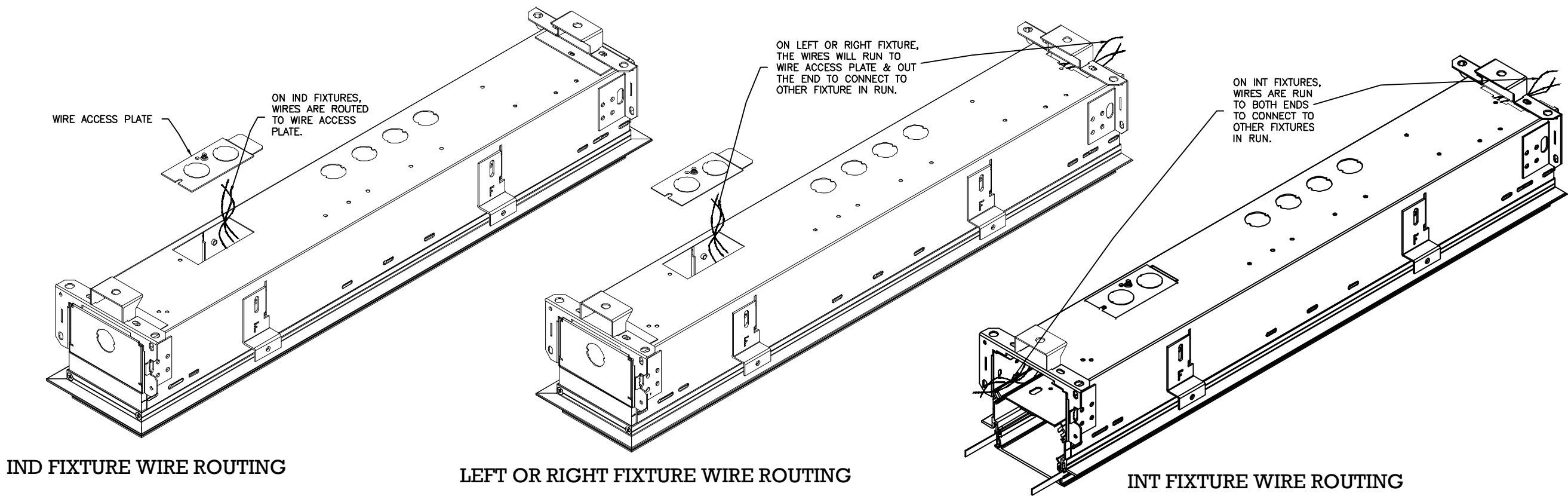
Mark Architectural Lighting
3 Kilmer Rd.
Edison, NJ 08817
T (732)985-2600
F (732) 985-8441
marklighting.com

Project: INSTALLATION SHEET SLOT RECESSED LOW PROFILE SERIES			
Distributor:			
By:	Date:	Scale: NTS	
Dwg. no.:	15-1564 SHEET 3 OF 8	Size: B	Rev. C

This document, the designs and information presented hereon are the confidential and proprietary property of Mark Architectural Lighting and is presented for the sole use of conveying product data to our customer. The use, reproduction or divulging of its contents without the consent or knowledge of Mark Architectural Lighting is prohibited.

Rev.	Description	Date	By
A	ADD WIRE ROUTING PAGE	05/14/2019	JRG
B	GRID CLIP SCREW CHANGE FROM 8 TO 10 MM AND YELLOW BAG ADDED IN NOTES	09/30/2019	MMP
C	ADDED NLIGHT AIR2 ANTENNAE INSTALLATION / REMOVED NOTE STATING NOT TO INSTALL ANYTHING WITHIN 3" OF FIXTURE	01/02/2020	JRL

WIRE ROUTING



NOTES:

1. FIXTURE TO BE INSTALLED IN ACCORDANCE WITH ALL APPLICABLE CODES BY A QUALIFIED ELECTRICIAN OR OTHER PERSON FAMILIAR WITH THE CONSTRUCTION AND OPERATION OF THIS PRODUCT AND THE HAZARDS INVOLVED.

TYPE:

MARK
An Acuity Brands Company

Mark Architectural Lighting
3 Kilmer Rd.
Edison, NJ 08817
T (732)985-2600
F (732) 985-8441
marklighting.com

Project: **INSTALLATION SHEET**
SLOT RECESSED LOW PROFILE SERIES

Distributor:

By:

Date:

Scale:

NTS

Dwg. no.:

15-1564
SHEET 4 OF 8

Size:

Rev.

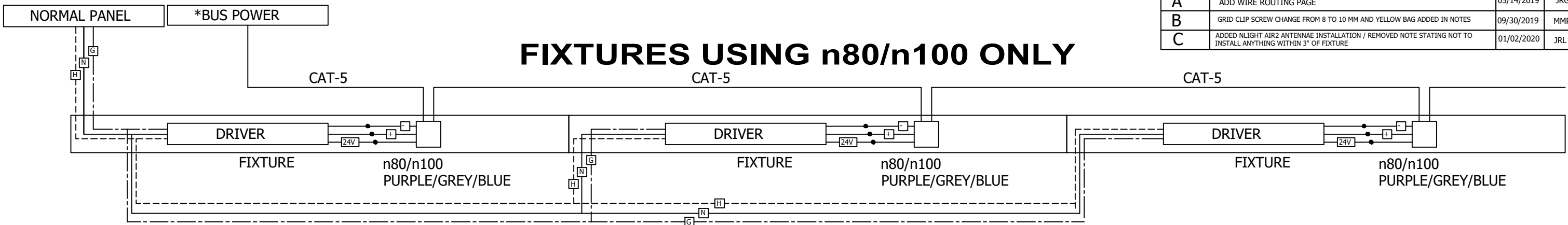
B

C

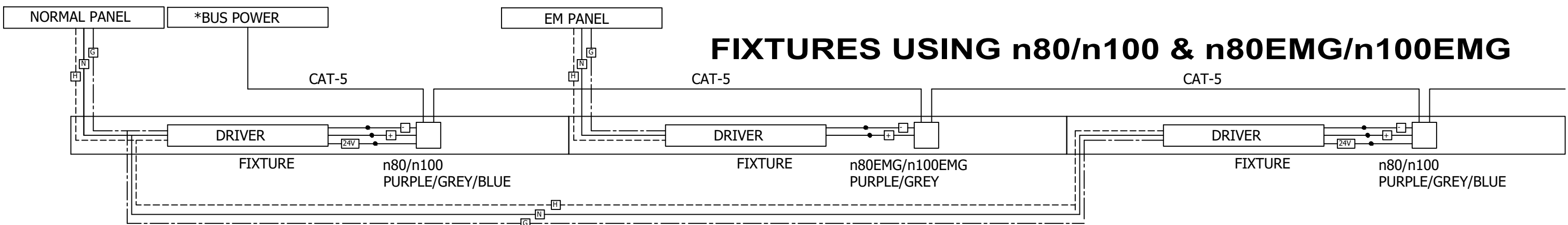
This document, the designs and information presented hereon are the confidential and proprietary property of Mark Architectural Lighting and is presented for the sole use of conveying product data to our customer. The use, reproduction or divulging of its contents without the consent or knowledge of Mark Architectural Lighting is prohibited.

Rev.	Description	Date	By
A	ADD WIRE ROUTING PAGE	05/14/2019	JRG
B	GRID CLIP SCREW CHANGE FROM 8 TO 10 MM AND YELLOW BAG ADDED IN NOTES	09/30/2019	MMP
C	ADDED nLIGHT AIR2 ANTENNAE INSTALLATION / REMOVED NOTE STATING NOT TO INSTALL ANYTHING WITHIN 3" OF FIXTURE	01/02/2020	JRL

FIXTURES USING n80/n100 ONLY



FIXTURES USING n80/n100 & n80EMG/n100EMG



n80EMG/n100EMG vs. n80/n100 Versions
All LED fixtures with the n80EMG/n100EMG nomenclature have an integrated nLO LED LC ER device. This device is powered over the connected CAT-5 cable from one or more nLight devices capable of inserting power onto the CAT-5 bus (see NOTE 1 below). This is different from the nLO LED LC device that is integrated into fixtures with just the standard n80/n100 nomenclature as those devices are powered directly from the LED driver within the fixture.

Intended Operation of n80EMG/n100EMG Version
An n80EMG/n100EMG fixture is intended to be fed by Emergency power and connected via a CAT-5 cable to an nLight zone that has adequate bus power (see note 1 for list of nLight devices that generate power). All the connected nLight devices generating bus power should be fed with Normal power. If Normal power is removed, thus elimination bus power, the n80EMG/n100EMG fixture will remain on (as it is fed by Emergency power) and will revert to 100% light output. This is the due fact that the nLO LED ER will no longer be powered and capable of drawing down the LED driver's 0-10VDC control signal. If the fixture was off (i.e. in sleep mode) when primary power was lost, it will come on and go to 100%.

Stand alone Operation
If an n80EMG/n100EMG fixture is not connected to a powered nLight bus, the internal nLO LED LC ER device will not function therefore lumen compensation (n80 EMG version) will not function

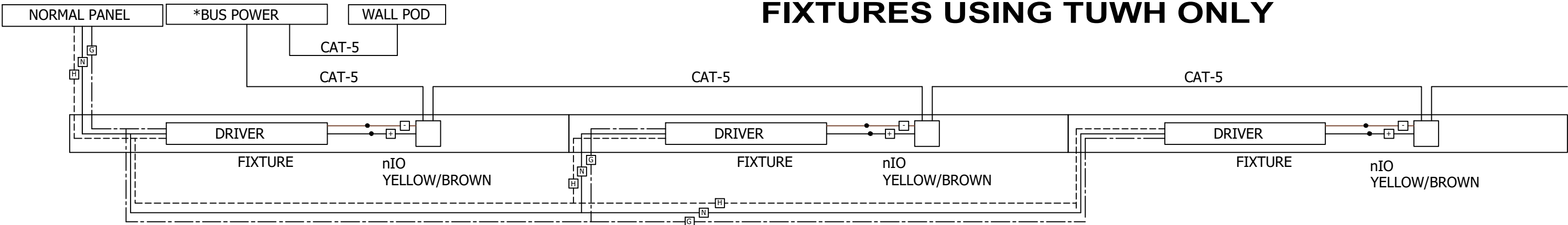
*NOTE: DEVICES SUPPLYING nLIGHT BUS POWER
n80/n100 VERSIONS OF THE SL2/4/6LED FIXTURES
nPP16 – nLIGHT POWER PACK
nPS 80 – nLIGHT POWER SUPPLY
nPANEL 4/nPANEL 2 480 – nLIGHT PANEL
nBRG 8 – nLIGHT BRIDGE



Mark Architectural Lighting
3 Kilmer Rd.
Edison, NJ 08817
T (732)985-2600
F (732) 985-8441
marklighting.com

Project: INSTALLATION SHEET SLOT RECESSED LOW PROFILE SERIES			
Distributor:			
By:	Date:	Scale: NTS	
Dwg. no.:	15-1564 SHEET 5 OF 8	Size: B	Rev. C

This document, the designs and information presented hereon are the confidential and proprietary property of Mark Architectural Lighting and is presented for the sole use of conveying product data to our customer. The use, reproduction or divulging of its contents without the consent or knowledge of Mark Architectural Lighting is prohibited.			
Rev.	Description	Date	By
A	ADD WIRE ROUTING PAGE	05/14/2019	JRG
B	GRID CLIP SCREW CHANGE FROM 8 TO 10 MM AND YELLOW BAG ADDED IN NOTES	09/30/2019	MMP
C	ADDED NLIGHT AIR2 ANTENNAE INSTALLATION / REMOVED NOTE STATING NOT TO INSTALL ANYTHING WITHIN 3" OF FIXTURE	01/02/2020	JRL



n80EMG/n100EMG vs. n80/n100 Versions
Some LED fixtures with the N80EMG/N100EMG option nomenclature and an eldoLED driver have an integrated nIO EZDL ER device. This device is capable of monitoring nLight bus power. When bus power is no longer sensed, logic within the nIO EZDL ER will drive the fixture to a full bright state until bus power is restored.

Intended Operation of n80EMG/n100EMG Version
An n80EMG/n100EMG fixture is intended to be fed by Emergency power and connected via a CAT-5 cable to an nLight zone. All the connected nLight devices generating bus power should be fed with Normal power. If Normal power is removed, thus elimination bus power, the n80EMG/n100EMG fixture will remain on (as it is fed by Emergency power) and will revert to 100% light output. This occurs because the nIO EZDL ER will no longer be sensing normal bus power. If the fixture was off (i.e. in sleep mode) when primary power was lost, it will come on and go to 100%. If an N80EMG/N100EMG fixture is connected to a powered nLight bus, the internal nIO EZDL ER device will function as a stand-alone device; lumen compensation (ERN80 version) will remain active.

Stand alone Operation
If an n80EMG/n100EMG fixture is not connected to a powered nLight bus, the internal nIO EZDL ER device will not function therefore lumen compensation (n80 EMG version) will not function

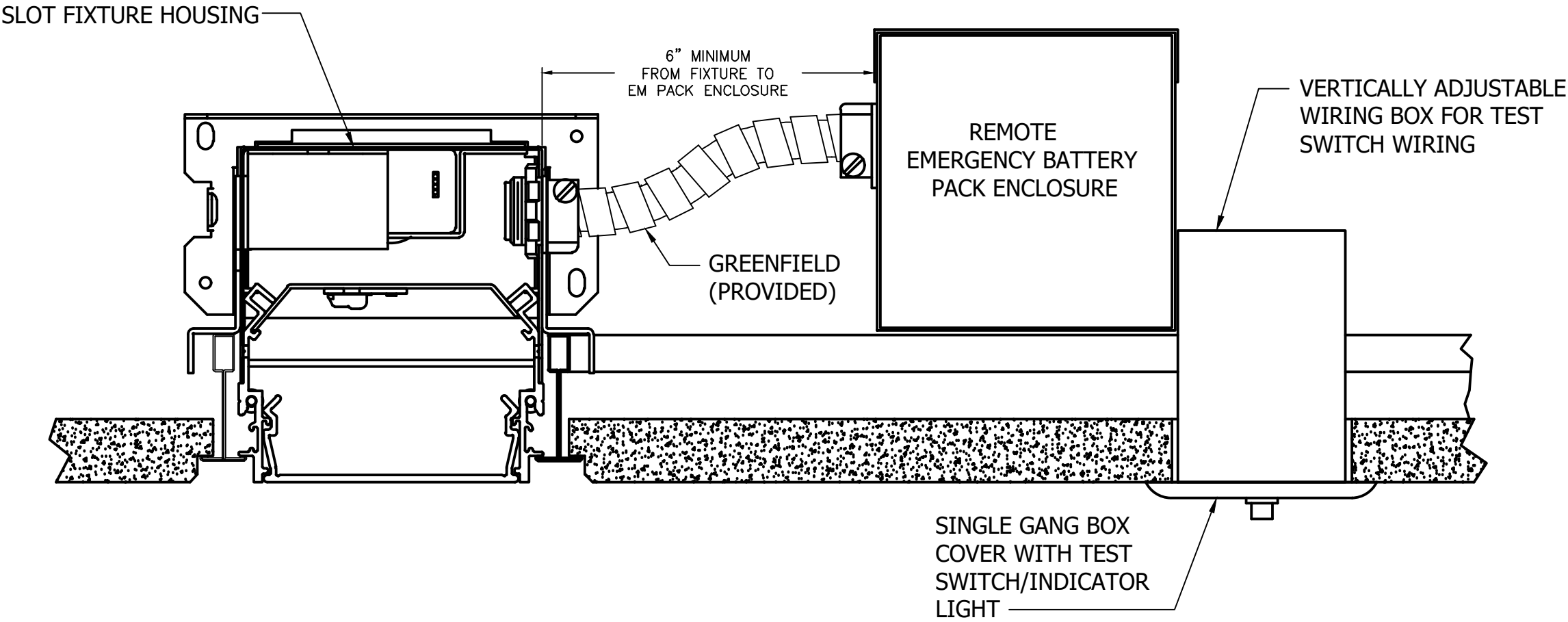
***NOTE: DEVICES SUPPLYING nLIGHT BUS POWER**
nPS 80 – nLIGHT POWER SUPPLY
nPP16 – nLIGHT POWER PACK
nPANEL 4/nPANEL 2 480 – nLIGHT PANEL
nBRG 8 – nLIGHT BRIDGE



Mark Architectural Lighting
3 Kilmer Rd.
Edison, NJ 08817
T (732)985-2600
F (732) 985-8441
marklighting.com

Project: INSTALLATION SHEET SLOT RECESSED LOW PROFILE SERIES			
Distributor:			
By:	Date:	Scale: NTS	
Dwg. no.:	15-1564 SHEET 6 OF 8	Size: B	Rev. C

This document, the designs and information presented hereon are the confidential and proprietary property of Mark Architectural Lighting and is presented for the sole use of conveying product data to our customer. The use, reproduction or divulging of its contents without the consent or knowledge of Mark Architectural Lighting is prohibited.			
Rev.	Description	Date	By
A	ADD WIRE ROUTING PAGE	05/14/2019	JRG
B	GRID CLIP SCREW CHANGE FROM 8 TO 10 MM AND YELLOW BAG ADDED IN NOTES	09/30/2019	MMP
C	ADDED NLIGHT AIR2 ANTENNAE INSTALLATION / REMOVED NOTE STATING NOT TO INSTALL ANYTHING WITHIN 3" OF FIXTURE	01/02/2020	JRL



NOTES:
1. FIXTURE TO BE INSTALLED IN ACCORDANCE WITH ALL APPLICABLE CODES BY A QUALIFIED ELECTRICIAN OR OTHER PERSON FAMILIAR WITH THE CONSTRUCTION AND OPERATION OF THIS PRODUCT AND THE HAZARDS INVOLVED.



Mark Architectural Lighting
3 Kilmer Rd.
Edison, NJ 08817
T (732)985-2600
F (732) 985-8441
marklighting.com

Project:
INSTALLATION SHEET
SLOT RECESSED LOW PROFILE SERIES

Distributor:

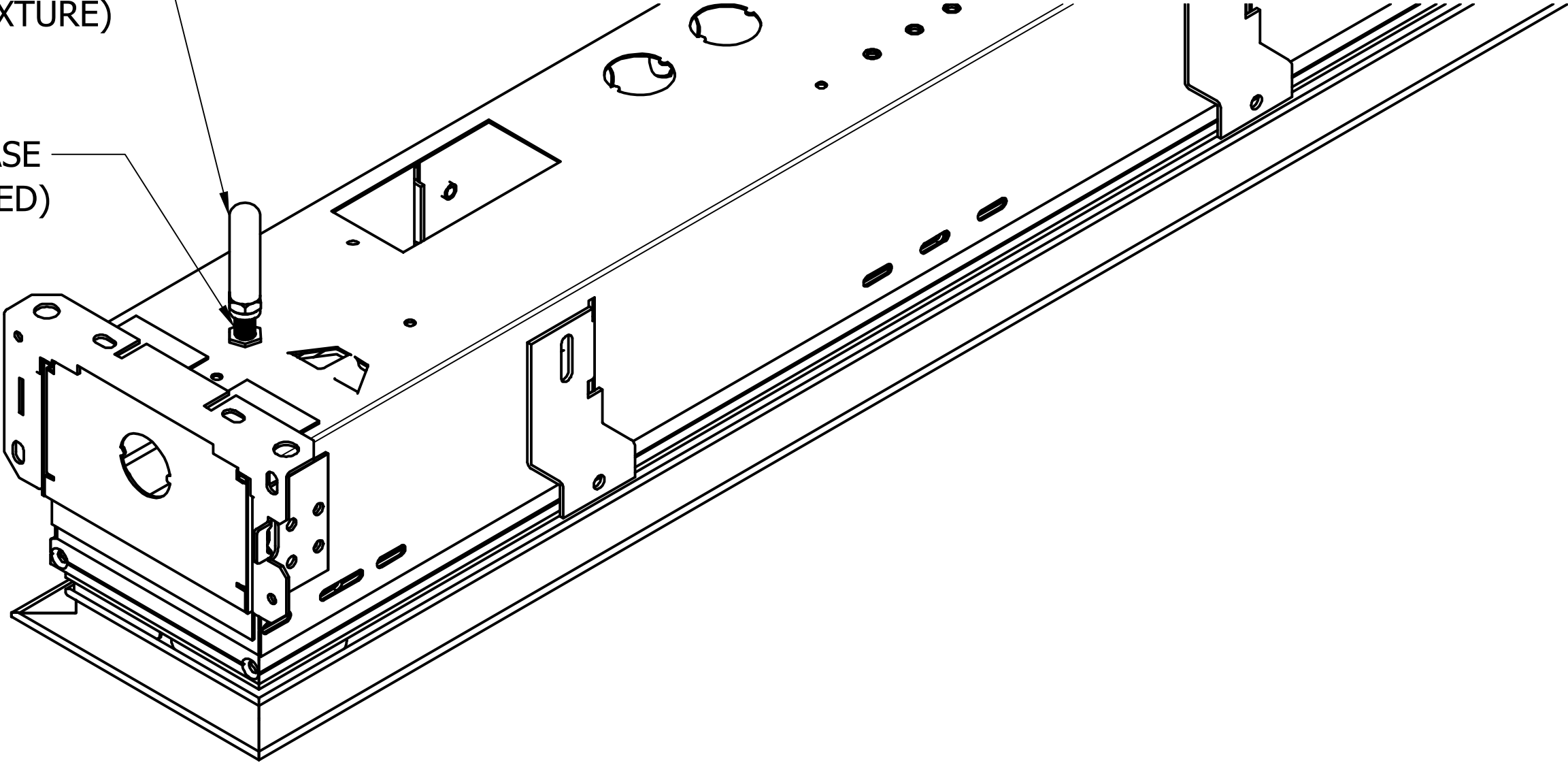
By: **Date:** **Scale:** NTS

Dwg. no.: 15-1564 **Size:** B **Rev.** C
SHEET 7 OF 8

This document, the designs and information presented hereon are the confidential and proprietary property of Mark Architectural Lighting and is presented for the sole use of conveying product data to our customer. The use, reproduction or divulging of its contents without the consent or knowledge of Mark Architectural Lighting is prohibited.			
Rev.	Description	Date	By
A	ADD WIRE ROUTING PAGE	05/14/2019	JRG
B	GRID CLIP SCREW CHANGE FROM 8 TO 10 MM AND YELLOW BAG ADDED IN NOTES	09/30/2019	MMP
C	ADDED NLIGHT AIR2 ANTENNAE INSTALLATION / REMOVED NOTE STATING NOT TO INSTALL ANYTHING WITHIN 3" OF FIXTURE	01/02/2020	JRL

ANTENNAE
(PACKAGED WITH FIXTURE)

COAX BASE
(PRE-INSTALLED)



NOTES:
1. INSTALL ANTENNAE ON COAX CABLE BEFORE
INSTALLING IN CEILING



Mark Architectural Lighting
3 Kilmer Rd.
Edison, NJ 08817
T (732)985-2600
F (732) 985-8441
marklighting.com

Project: INSTALLATION SHEET SLOT RECESSED LOW PROFILE SERIES			
Distributor:			
By:	Date:	Scale:	NTS
Dwg. no.:	15-1564	Size:	Rev. C
SHEET 8 OF 8			