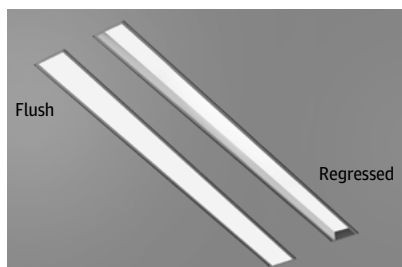


MARK ARCHITECTURAL LIGHTING™

Slot 2 LED Design2Ship™ Recessed Linear

Type:



Slot 2 LED takes both form and function a step further with increased efficacy and integral controls creating a digitally addressable luminaire that is perfect where visually harmonious illumination and energy efficiency are desired.

Slot 2 LED is the ideal choice for spaces that emphasize lines and clean contemporary design. It is a perfect fit for Armstrong TechZone™ ceiling systems. A regressed lens option provides added dimension to the sleek, slender design.

Project:

Catalog Number:

DO NOT TYPE HERE. Autopopulated field.

Specification Features (continued on page 2)

Housing

Nominal 2" x 2', 3', 4', 5', 6', 7', 8' and continuous rows in 1' increments as standard, upper housing fabricated from cold-rolled steel with extruded aluminum ceiling trim.

Finish

Painted high reflectance matte white powder coat.

Reflector

Precision-formed steel; high reflectance matte white powder coat; 93% reflectivity.

Shielding

Flush Lens: Snap-in 90% transmissive satin acrylic lens.

Regressed Lens: Lay-in 90% transmissive satin acrylic lens.

Mounting

Recessed. Available for sheetrock, 9/16" slot grid or 15/16" inverted tee ceilings, or 9/16" inverted tee.

Design2Ship

Maximum order quantity of 500 linear feet per order. 5 business days from clean release of the order

Fixture Performance - SL2L*

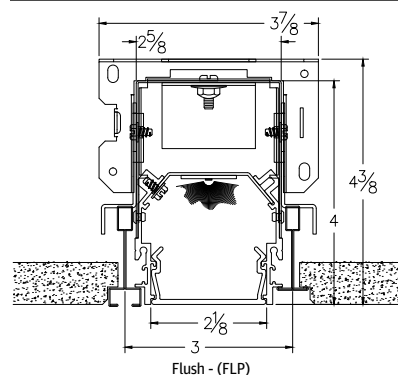
Lumens Output	400 LMF		600 LMF**		800LMF**		1000LMF	
Fixture Style	RLP	FLP	RLP	FLP	RLP	FLP	RLP	FLP
Delivered Lumens/FT	234	308	404	533	534	705	654	862
Input Watts/FT	4	4	6	6	8	8	11	11
Lumen/Watt	68	89	69	91	67	88	62	82

*CCT (35K)

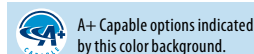
*Consult factory for customized lumen output and wattage

**Based on calculated values

Technical Drawing



eldoLED
your product | our drive



Ordering

Example: SL2L QS LOP 4FT FLP FL 80CRI 30K 600LMF DARK 277 EMG NLIGHT

--	--	--	--	--	--

Series	Program	Linear Length Plan	Total Run Length	Fixture Style	Ceiling Trim
SL2L Slot 2 LED Linear Recessed	QS Quick Ship (5 day Shipping)	LOP Linear Optimized Plan	2FT 2' 3FT 3' 4FT 4' 5FT 5' 6FT 6'	RLP ¹ Regressed Lens FLP ² Flush Lens	FL ³ 5/8" Flange(sheetrock) TG 9/16" or 15/16" Flat or Inverted Tee GB ³ Trimless (sheetrock)

--	--	--	--	--	--

Direct Light Source Color Rendering	Direct LED Color Temp	Direct LED Light Output	Direct Distribution	Minimum Dimming Level	Voltage
80CRI 80 CRI	30K 3000K	400LMF 400 Lumens per FT	(blank) Standard Distribution	NODIM Non - Dim	120 120V
90CRI 90 CRI	35K 3500K	600LMF 600 Lumens per FT	WW ⁴ Wall Wash	MINI Constant current, dimming to 1%	277 277V
	40K 4000K	800LMF 800 Lumens per FT		DARK Constant current, dimming to 0.1%	
		1000LMF 1000 Lumens per FT			

--	--	--

Emergency Options	Control Input	Options
(blank) No Emergency E10WLC ⁵ 4ft Emergency Section with battery pack EC 4ft Emergency circuit	(blank) ⁶ Non-dim ZT 0 10V NLIGHT nLight enabled	CP Chicago Plenum PWS 6' pre-wire, 3/8 diameter, 18 gauge

Notes

- Supplied with lift and shift lay-in lens.
- Supplied with snap-in lens.
- Not intended for post sheetrock installation.

- Wall wash not available with RLP lens option.
- Remote mounted. Not available with CP.
- Must select with NODIM option.

Specification Features (continued)

LED Components

Linear: Nichia® - 757 Series LED chips (available in 80 or 90 CRI)

LED Life

Rated 65,000 hours (L80) at 25 °C ambient temperature.

Color Consistency

The Acuity Brands circuit boards for the linear LED components use a precise binning algorithm which creates a consistent color temperature from board to board. Color variation is no greater than a 2.5 Step MacAdam (2.5SDCM) along the black body locus from board to board.

Driver

eldoLED constant current driver options delivers ultra-smooth dimming resolution from 100% to 0.1%, while assuring flicker free, low current inrush, 89% efficiency and low EMI.

Integrated Controls

Optional nLight® embedded controls make luminaire addressable-allowing it to digitally communicate with other nLight enabled controls such as dimmers, switches, occupancy sensors and photocontrols. Simply connect all the nLight enabled control devices using standard CAT5 Cabling. (Input option: NLIGHT)

A+ Capable Luminaire

This item is an A+ capable luminaire, which has been designed and tested to provide consistent color appearance and out-of-the-box control compatibility with simple commissioning.

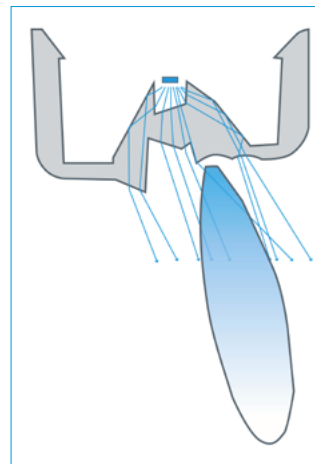
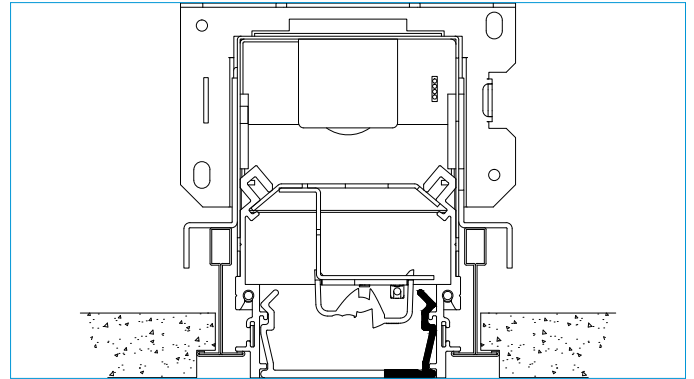
- All configurations of this luminaire meet the Acuity Brands' specification for chromatic consistency
- This luminaire is part of an A+ Certified solution for nLight® control networks when ordered with drivers marked by a shaded background*
- This luminaire is part of an A+ Certified solution for nLight control networks, providing advanced control functionality at the luminaire level, when selection includes driver and control options marked by a shaded background*

To learn more about A+, [visit www.acuitybrands.com/aplus](http://www.acuitybrands.com/aplus).

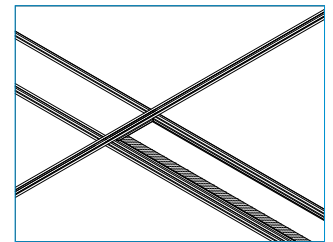
*See ordering tree for details

Optics

Slot LED's patent-pending, precision lumen DIRECTIR optics condition and refract light to deliver accurately controlled, striation-free, and uniform white light. All lumen DIRECTIR optics are injection-molded, optical grade, UV-resistant acrylic with selective finishing/polishing treatment.



Optional Wall Wash (WW)



Certification

CSA tested to UL 1598 standards.

Warranty

5-year limited warranty. Complete warranty terms located at: www.acuitybrands.com/CustomerResources/Terms_and_conditions.aspx

Note: Actual performance may differ as a result of end-user environment and application.

All values are design or typical values, measured under laboratory conditions at 25 °C.

Specifications subject to change without notice.

Photometry

For photometric information refer to www.marklighting.com.

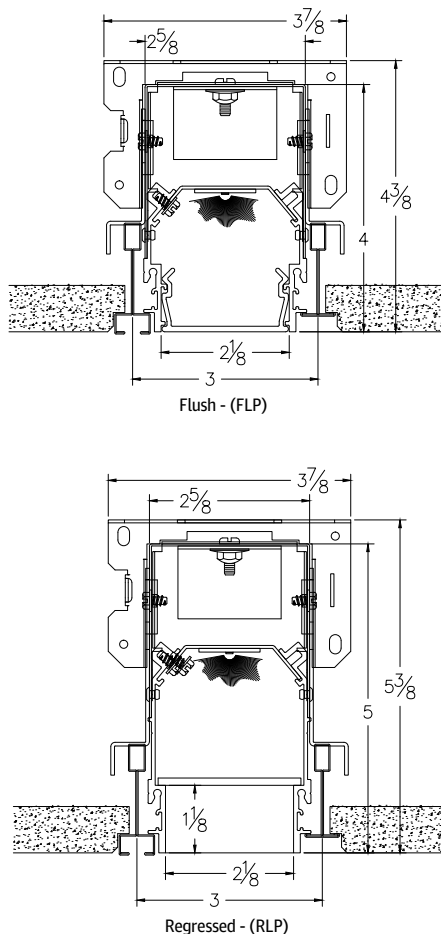
Design2Ship™ Program Details

1. All Quick Ship orders should be activated through Agile.
2. Ship dates are 5 business days from date of clean release. Order lines must process and code upon entry, if you have an UNK, NCI or BOM status, re-check your spec sheet to correct nomenclature.
3. All order received after 3:30pm EST will be processed the next business day and will receive an ESD from that date.
4. All purchase orders must be clearly identified as Quick Ship. Non-Quick Ship products should be ordered on a separate purchase order.
5. Orders with both Quick Ship products and non-Quick Ship products will default to the longest lead-time.
6. If an order exceeds the product specification sheet quantity, then the following shall apply:
 - a. If less than or equal to 2 times maximum Quick Ship quantity, the order will be split into two delivery dates. The first will go in 5 days followed by the second in 10 days.
 - b. If the order is more than 2 times maximum Quick Ship quantity, then the order would not qualify as a Quick Ship order.

MAXIMUM QUANTITY OF 500 LINEAR FEET PER ORDER

7. Changes to the order is not permitted.
8. Cancellation after release will result in a 50% restock fee, minimum.
9. Order requirements:
 - a. Complete ship to address
 - b. Contact information
 - c. Complete Quick Ship catalog number
 - d. Pricing and commission rate
 - e. Any shipping notes / site restrictions

Technical Drawing



Ceiling Trim

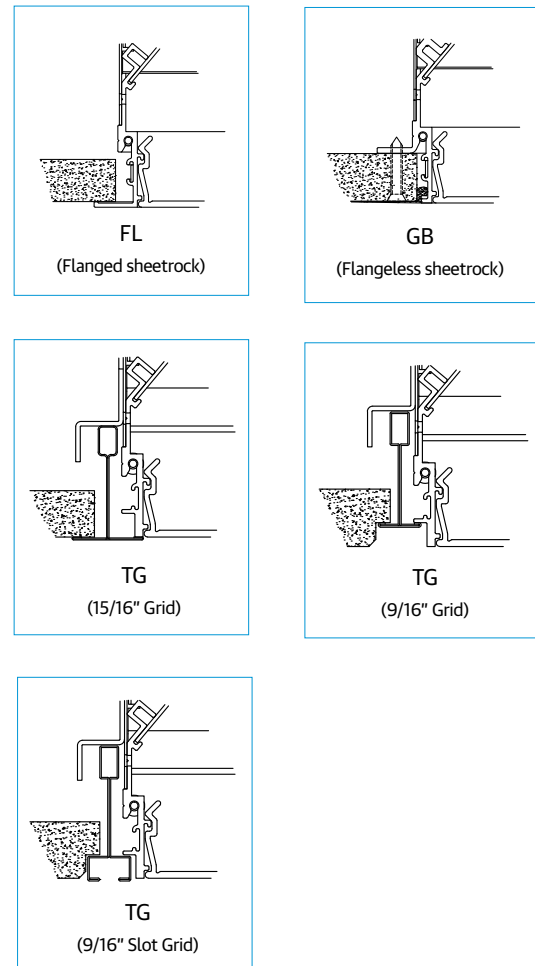


Diagram illustrating the connection of the Remote Emergency Battery Pack Enclosure to the Slot Fixture Housing and the Single Gang Box Cover.

- SLOT FIXTURE HOUSING**: The main enclosure housing the slot fixtures.
- 6" MINIMUM FROM FIXTURE TO EM PACK ENCLOSURE**: A clearance requirement between the slot fixture housing and the remote battery pack enclosure.
- REMOTE EMERGENCY BATTERY PACK ENCLOSURE**: The enclosure for the remote emergency battery pack.
- GREENFIELD (PROVIDED)**: A flexible conduit or cable used for the connection between the slot fixture housing and the remote enclosure.
- VERTICALLY ADJUSTABLE WIRING BOX FOR TEST SWITCH WIRING**: A box used for test switch wiring, connected to the remote enclosure.
- SINGLE GANG BOX COVER WITH TEST SWITCH/INDICATOR LIGHT**: A cover for the single gang box, featuring a test switch and indicator light.

- Delivers 700 lumens per 4FT length. Default location is the right side of fixture and end of run.
- Provided with 4FT of flexible conduit. Maximum of 25FT remote distance if extended. Extension provided by others.

To Make fixture NLTAIR2 compatible the following components are required:

-
- The diagram illustrates a 24VAC dimmable lighting system. It features a central J-BOX connected to a rPP20 D (24VAC Dimmer) and an rPODB 2P DX (24VAC Power Distribution Box). The system is powered by a Line Power source (A) and a Switched Line + Dimming source (B). The wiring key indicates that the Line Power is connected to the J-BOX, and the Switched Line + Dimming is connected to the rPP20 D. The rPP20 D is then connected to the rPODB 2P DX, which powers the lighting fixtures.