

READ AND FOLLOW ALL SAFETY INSTRUCTIONS!
SAVE THESE INSTRUCTIONS AND DELIVER TO OWNER AFTER INSTALLATION

- To reduce the risk of death, personal injury or property damage from fire, electric shock, falling parts, cuts/abrasions, and other hazards please read all warnings and instructions included with and on the fixture box and all fixture labels.
- Before installing, servicing, or performing routine maintenance upon this equipment, follow these general precautions.
- Installation and service of luminaires should be performed by a qualified licensed electrician.
- Maintenance of the luminaires should be performed by person(s) familiar with the luminaires' construction and operation and any hazards involved. Regular fixture maintenance programs are recommended.
- It will occasionally be necessary to clean the outside of the refractor/lens. Frequency of cleaning will depend on ambient dirt level and minimum light output which is acceptable to user. Refractor/lens should be washed in a solution of warm water and any mild, non-abrasive household detergent, rinsed with clean water and wiped dry. Should optical assembly become dirty on the inside, wipe refractor/lens and clean in above manner, replacing damaged gaskets as necessary.
- DO NOT INSTALL DAMAGED PRODUCT! This luminaire has been properly packed so that no parts should have been damaged during transit. Inspect to confirm. Any part damaged or broken during or after assembly should be replaced.
- Recycle: For information on how to recycle LED electronic products, please visit www.epa.gov.
- These instructions do not purport to cover all details or variations in equipment nor to provide every possible contingency to meet in connection with installation, operation, or maintenance. Should further information be desired or should particular problems arise which are not covered sufficiently for the purchaser's or owner's purposes, this matter should be referred to Acuity Brands Lighting, Inc.



WARNING
RISK OF ELECTRIC SHOCK

- ✓ Disconnect or turn off power before installation or servicing.
- ✓ Verify that supply voltage is correct by comparing it with the luminaire label information.
- ✓ Make all electrical and grounded connections in accordance with the National Electrical Code (NEC) and any applicable local code requirements.
- ✓ All wiring connections should be capped with UL approved recognized wire connectors.



WARNING
RISK OF BURN

- ✓ Allow lamp/fixture to cool before handling. Do not touch enclosure or light source.
- ✓ Do not exceed maximum wattage marked on luminaire label.
- ✓ Follow all manufacturer's warnings, recommendations and restrictions for: driver type, burning position, mounting locations/methods, replacement and recycling.



CAUTION
RISK OF INJURY

- ✓ Wear gloves and safety glasses at all times when removing luminaire from carton, installing, servicing or performing maintenance.
- ✓ Avoid direct eye exposure to the light source while it is on.



CAUTION
RISK OF FIRE

- ✓ Keep combustible and other materials that can burn, away from lamp/lens.
- ✓ Do not operate in close proximity to persons, combustible materials or substances affected by heat or drying.



CAUTION: RISK OF PRODUCT DAMAGE

- ✓ Never connect components under load.
- ✓ Do not mount or support these fixtures in a manner that can cut the outer jacket or damage wire insulation.
- ✓ Controls for dimming, auto-sensing, or remote control of a luminaire that are not factory-wired to the luminaire must be checked for compatibility with the luminaire prior to installation. LED fixtures must be powered directly off a switched circuit.
- ✓ Unless individual product specifications deem otherwise: Do not restrict fixture ventilation. Allow for some volume of airspace around fixture. Avoid covering LED fixtures with insulation, foam, or other material that will prevent convection or conduction cooling.
- ✓ Unless individual product specifications deem otherwise: Do not exceed fixtures maximum ambient temperature.
- ✓ Only use fixture in its intended location.
- ✓ LED products are Polarity Sensitive. Ensure proper Polarity before installation.
- ✓ Electrostatic Discharge (ESD): ESD can damage LED fixtures. Personal grounding equipment must be worn during all installation or servicing of the unit.
- ✓ Do not touch individual electrical components as this can cause ESD, shorten lamp life, or alter performance.
- ✓ Some components inside the fixture may not be serviceable. In the unlikely event your unit may require service, stop using the unit immediately and contact an ABL representative for assistance.
- ✓ Always read the fixtures complete installation instructions prior to installation for any additional fixture specific warnings.

Please see product specific installation instructions for additional warnings or any applicable FCC or other regulatory statements.

Failure to follow any of these instructions could void product warranties. For a complete listing of product Terms and Conditions, please visit www.acuitybrands.com.

Our Brands

Indoor/Outdoor
Lithonia Lighting
Carandini
Holophane
RELOC
Light Concepts

Indoor Lighting
Gotham
Mark Architectural Lighting
Peerless
Renaissance Lighting
Winona Lighting

Outdoor Lighting
American Electric Lighting
Antique Street Lamps
Hydrel
Tersen

Controls
DARK TO LIGHT
LC&D
ROAM
Sensor Switch
Synergy

Daylighting
SunOptics

Acuity Brands Lighting, Inc. assumes no responsibility for claims arising out of improper or careless installation or handling of its products.

ABL LED General Warnings, Form No. 503.203

© 2010 Acuity Brands Lighting, Inc. All rights reserved. 12/01/10

Installation Instructions

WST LED 2016 Premium Back Box

5 year limited warranty



DELIVERY: Upon receipt of fixture and accessories (packed separately), thoroughly inspect for any freight damage. All damage should be reported to the delivery carrier. Compare the catalog description listed on the packing slip with the fixture label on the inside of the housing to be sure you have received the correct merchandise.

This device complies with Part 15 of the FCC Rules. Operation is subject to the following two conditions: (1) this device may not cause harmful interference, and (2) this device must accept any interference received, including interference that may cause undesired operation.

⚠ CAUTION: APPLY A CONTINUOUS BEAD OF WEATHER - PROOF CAULKING BETWEEN MOUNTING PLATE AND WALL TO ENSURE WEATHER - TIGHT INTEGRITY OF ELECTRICAL COMPONENTS.

Tools required: 3/16" allen wrench, level, 1/4" roll punch tool

Premium Backbox (PBBW) option/accessory only

Included in carton:

Backbox plate – installed

Orange rope gasket - installed

(8) 8-32 x 3/8" screws – installed

(1) NPT plug per NPT entry (minimum of 1, maximum of 3) -- installed finger-tight

Wall mount plate with integral support rod – installed

Remote EM options

Everything included with PBBW option.

Remote battery enclosure with metal flex conduit harness – wired in, but conduit fitting should not be snapped in place.

1/4" nut driver; Recommended, but not required: 1/4" roll punch tool for cast-in knockout.

WARNING: WST premium backbox is intended for wet location only. Not IP rated or designed for hose-down applications.

Apply continuous bead of weather-proof caulking between PBBW and wall if using the back cast knock-out entry.

All remote EM options use the back entry.

Remove backbox plate by backing out (8) pre-installed 8-32 x 3/8" screws. * Important to keep orange rope-gasket within PBBW gasket channel when removing plate. If gasket becomes dislodged: firmly press back into channel while being careful to avoid stretching gasket out.

Do not discard screws as they will be used to reinstall plate when backbox is installed on the wall and wiring is complete.

FIGURE 1: Plate being removed from PBBW (GR-2477)

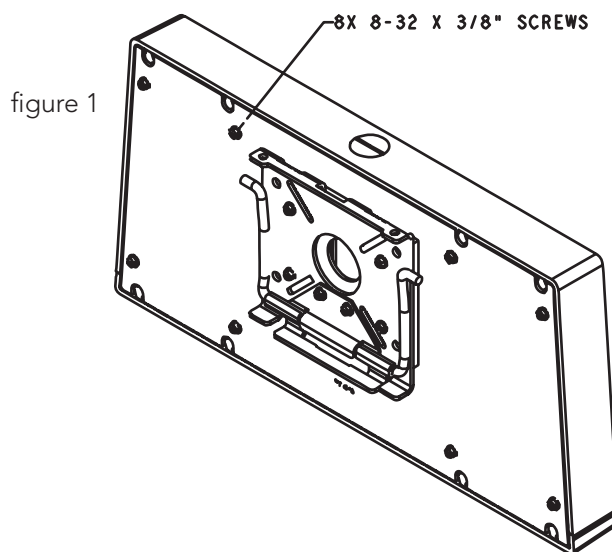
Cast knock-out is located on all PBBW's for rear entry wiring.

For remote EM options, the knock-out will already have been removed as remote battery wiring required back entry.

When ordering as option or accessory, customer will need to remove knock-out.

Top 3/4" NPT entry is located on all PBBW's for top entry wiring.

3/4" NPT side entries are only included if the customer has specified them when ordering the fixture (LCE or RCE).



An Acuity Brands Company

©2016 Acuity Brands Lighting, Inc.
All Rights Reserved.

Lithonia Lighting Outdoor
One Lithonia Way, Conyers, GA 30012
Phone: 800-279-8041 Fax: 770-918-1209
www.lithonia.com

Part Number: IM-405 REV B
Revision Date: 6-24-16

Installation Instructions

WST LED 2016 Premium Back Box

FIGURE 2: PBBW with entries called out (GR-2478).

Note: optional side entries not shown

Install backbox to wall (Using (4) ¼-20 screws – NOT included).

Be sure PBBW is installed level before attaching to wall.

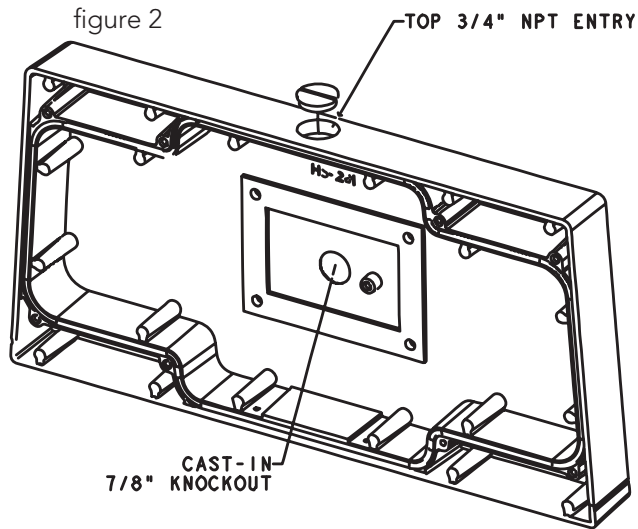
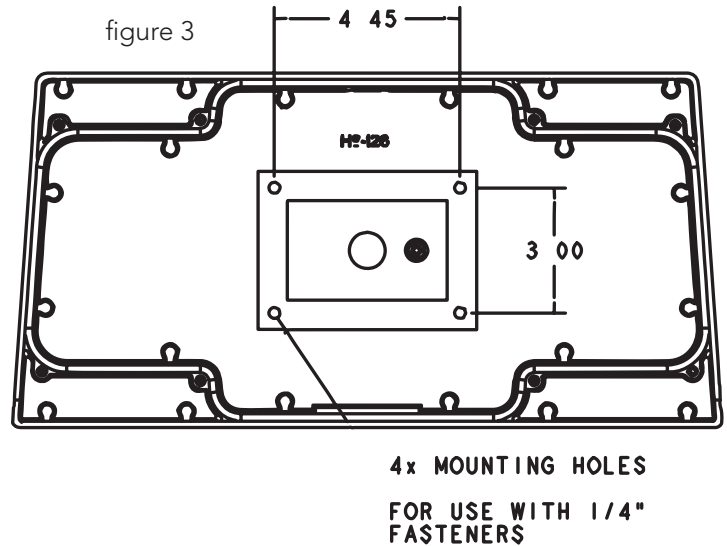


FIGURE 3: dimension PBBW mounting holes (GR-2479).

Install supply leads through chosen entry.

Note: For non-remote EM use of the PBBW, refer to the WST LED installation manual, IM-401, included with the luminaire.



GR-2478

GR-2479

For luminaires with remote battery packs only

1. Remove back plate from premium backbox to expose internal wiring.
2. Disconnect all wiring inside the premium backbox such that flex conduit harness coming from the remote battery unit can be separated from the rest of the luminaire.
3. Once the remote battery unit has been separated, mount the battery unit in the desired location and route the flex conduit as needed.
4. Route the wires coming from the flex conduit into the premium backbox through the 7/8" knockout (refer to figure 2) and snap the flex conduit into place.
 - a. E23WHR OPTION ONLY: Snap indicator light into place on the bottom of the premium backbox.
5. Apply a continuous bead of weather-proof caulking between the premium backbox and wall to ensure weather-tight integrity of electrical components.
6. After applying caulking secure the premium backbox to the wall via four ¼" bolts (not supplied).
 - a. Refer to figure 3 for mounting pattern
7. Route supply leads into fixture via ¾" NPT entry and connect supply leads. Refer to figures 4a or 4b of this installation manual or the included battery pack installation manual for wiring diagrams.
 - a. Note: All premium backboxes will have a top entry, side entries are optional and not present on all premium backboxes.
8. E23WHR OPTION ONLY: Be sure to connect the two red leads coming from the flex conduit, this will activate the battery pack.
 - a. The luminaire must be supplied with AC power within 90 minutes of connecting these wires to prevent complete discharge of the battery pack and to avoid potential damage to the battery.



An Acuity Brands Company

©2016 Acuity Brands Lighting, Inc.
All Rights Reserved.

Lithonia Lighting Outdoor
One Lithonia Way, Conyers, GA 30012
Phone: 800-279-8041 Fax: 770-918-1209
www.lithonia.com

Part Number: IM-405 REV B
Revision Date: 6-24-16

Installation Instructions

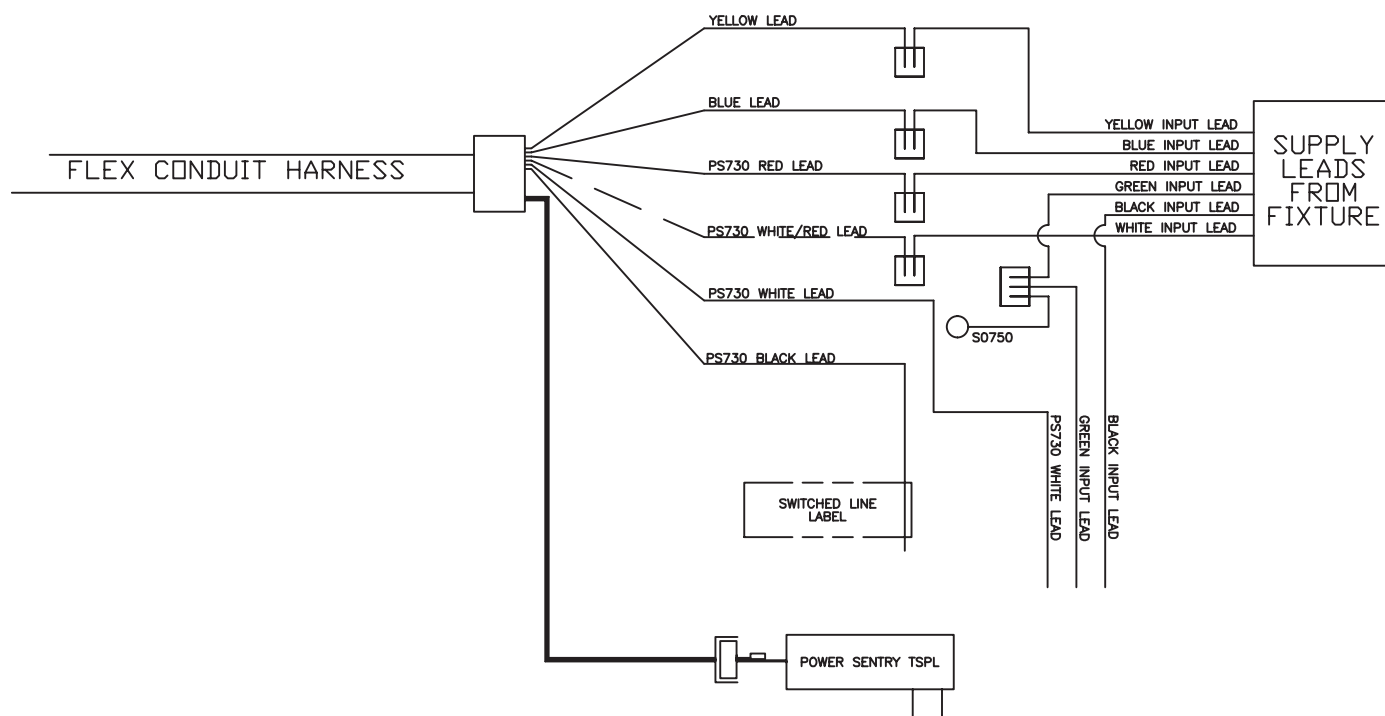
WST LED 2016 Premium Back Box

9. Reattach the back plate to the premium backbox. Be sure to route wires through the center hole before fastening plate down so that wiring connections to the luminaire can be remade.
10. Attach the luminaire to the premium backbox via the mounting brackets (refer to installation manual IM-401 which is also included with the luminaire) and allow the luminaire to hang from the bracket support rod while remaining electrical connections are made.
11. Reattach input leads from the luminaire to the leads coming from the premium backbox. Refer to figure 4a or 4b for wiring diagrams. When the connections are complete, push wiring back through the back plate hole.
12. When all wiring is back inside the premium backbox complete installation of luminaire onto premium backbox (refer again to installation manual IM-401).
13. E7WHR OPTION ONLY: With luminaire fully installed to wall, open remote battery mounting box and ensure the 4-pin wire harness is connected to the internal PS730 battery pack. Making this connection will activate the battery pack.
 - a. The luminaire must be supplied with AC power within 90 minutes of connecting these wires to prevent complete discharge of the battery pack and to avoid potential damage to the battery.

FOR BOTH REMOTE BATTERY OPTIONS: Allow luminaire to be supplied with AC power for 24 hours before testing to ensure battery packs are fully charged.

FIGURE 4a:

E7WHR Wiring diagram (GR-2480)

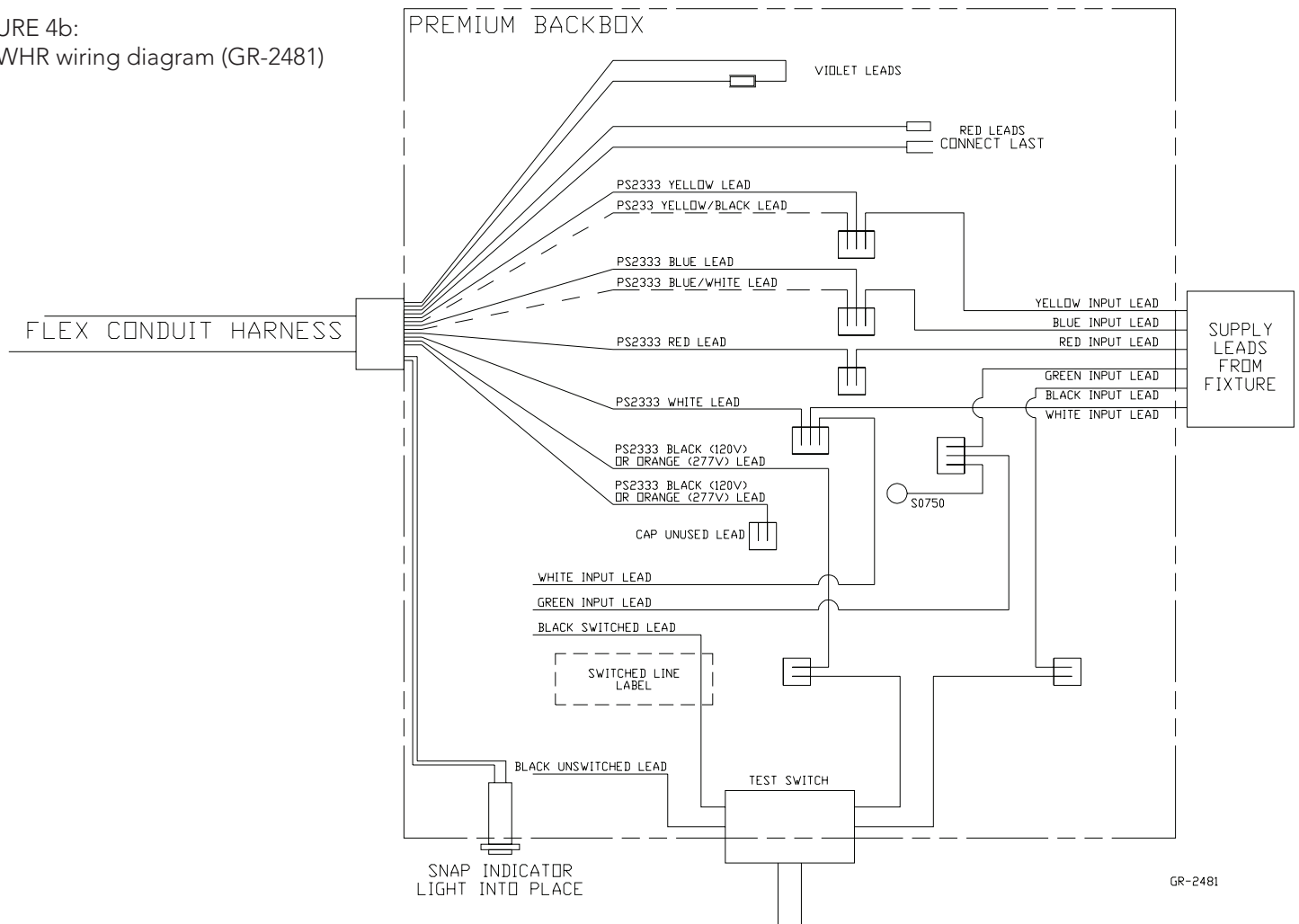


GR-2480

Installation Instructions

WST LED 2016 Premium Back Box

FIGURE 4b:
E23WHR wiring diagram (GR-2481)



If any NPT entries are not used (figure 5):

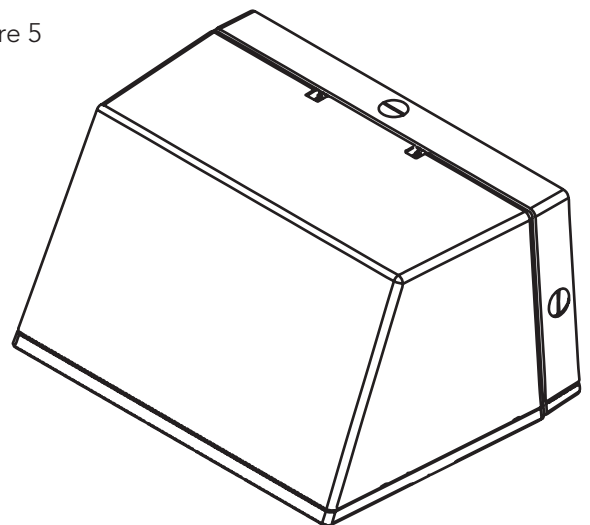
Thread plugs in until they are tight and seal with silicon sealant (sealant not provided).

Feed supply wired through backbox plate and reinstall using supplied 8-32 screws.

Be sure no wires are being pinched and that gasket is securely placed in channel.

Refer to IM-401 for installation instructions of fixture to backbox plate via the preinstalled fixture mounting bracket and wall mounting plate.

figure 5



GR-2482