

## FEATURES & SPECIFICATIONS

**INTENDED USE** — Architectural deep-cast luminaire provides general illumination for rough service (vandal resistant) applications. Ideal for interior or exterior applications where safety and security are a concern. Designed to complement building architecture and to endure extreme environmental conditions and physical abuse. Amber LEDs available for applications requiring turtle-safe lighting. Certain airborne contaminants can diminish integrity of acrylic. [Click here for Acrylic Environmental Compatibility table for suitable uses.](#)

**CONSTRUCTION** — *Bezel* - One-piece, die-cast aluminum, low copper alloy (<1% copper). Encloses lens and secures to housing with stainless steel Torx® T-10 set screws (two included) or optional stainless steel tamper-resistant screws (see options).

*Housing* - One-piece, die-cast aluminum, low copper alloy (<1% copper), with post-painted polyester powder coat finish. Four hole mounting detail for use directly over outlet box, or conduit entry through three 1/2" threaded openings on side or 3/4" threaded opening on rear surface. .012 gauge aluminum sheet metal internal bracket and board plate for thermal conduction and support.

*Gasket* - Polycarbonate: Perimeter lens gasket is one-piece silicone "O" ring, mechanically held in lens channel. Glass: Perimeter lens gasket is closed-cell silicone. Pad mounting gasket is closed-cell neoprene and seals housing to mounting surface. Gaskets help cushion impact shock.

*Finish* - Standard finish is textured polyester powder coat in white, black or bronze. Optional architectural colors available (see paint finishes).

**OPTICS** — *Polycarbonate lens* — Injection-molded lens is .125 inch thick. Designed to enrich the LED color and lumen output. Smooth exterior allows for easy cleaning, and interior pattern diffuses light for even surface illumination.

**ELECTRICAL** — Utilizes high-efficiency LEDs mounted to 2 metal core circuit boards. 3500 Kelvin temperature. Driver: 2 electronic drivers wired in parallel allows total power to be reduced by half while maintaining even illumination across the 2 boards. 70% lumen maintenance at 50,000 hours. 100V through 277V, 50-60Hz operation. 6KV pulse rated. Integral surge protection standard.

**INSTALLATION** — Unit may be wall or ceiling mounted.

**LISTINGS** — CSA Certified to UL and C-UL standards. NOM Certified (see Options). CSA listed for 30°C ambient and wet locations. IP65 rated.

**BUY AMERICAN** — Product with the BAA option is assembled in the USA and meets the Buy America(n) government procurement requirements under FAR, DFARS and DOT. Please refer to [www.acuitybrands.com/buy-american](http://www.acuitybrands.com/buy-american) for additional information.

**WARRANTY** — 5-year limited warranty. Complete warranty terms located at:

[www.acuitybrands.com/support/warranty/terms-and-conditions](http://www.acuitybrands.com/support/warranty/terms-and-conditions)

For installed Rough Service Product(s), Acuity warrants that, for the lifetime of the product(s), the polycarbonate lens and/or polycarbonate housing will withstand breakage resulting from occasional physical abuse and rough handling (the "Rough Service Warranty"), notwithstanding the vandalism exclusion set forth at [www.acuitybrands.com/support/warranty/terms-and-conditions](http://www.acuitybrands.com/support/warranty/terms-and-conditions)

**NOTE:** Actual performance may differ as a result of end-user environment and application.

All values are design or typical values, measured under laboratory conditions at 25 °C.

Specifications subject to change without notice.

Catalog Number
Notes
Type



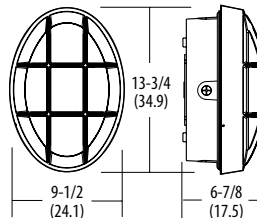
# GATEWAY®

Architectural Rough Service Fixture

## VG05C



LED  
Oval Open Face  
Deep Housing  
Ceiling/Wall Mounted



All dimensions are inches (centimeters).

### ORDERING INFORMATION

For shortest lead times, configure products using **bolded options**.

**Example:** VG05C 40LED 120 DBLB SF LPI

Series	Lumen output <sup>1</sup> /Color temperature <sup>2</sup>		Lens	Voltage	Paint finishes <sup>3</sup>	Options	Lamp
<b>VG05C</b>	<b>Lumen output<sup>1</sup></b>	<b>Color temperature<sup>2</sup></b>	(blank) Polycarbonate	<b>120</b> <b>277</b> <b>MVOLT</b>	<u>Standard textured finishes</u> <b>DWHG</b> White <b>DBLB</b> Black <b>DDBT</b> Dark bronze <b>DNAT</b> Natural aluminum <b>DSST</b> Sandstone	<u>Shipped installed in fixture</u> <b>DF</b> Double fuse <sup>4,5</sup> <b>SF</b> Single fuse <sup>5</sup> <b>DS</b> Dual switching <sup>6</sup> <b>MS18</b> Wet location motion sensor <sup>5,7</sup> <b>PE</b> Photoelectric cell <sup>5,8</sup> <b>TRS</b> Tamper-resistant screws <sup>9</sup> <b>NOM</b> Meets Mexican standards <b>BAA</b> Buy America(n) Act Compliant	<b>LPI</b> Lamp included

**Accessories:** Order as separate catalog number.

RK1 T20BIT Hex-base driver bit, Torx TX20, for tamper-resistant screws with center reject pin.

#### Notes

- Refer to table on back page.
- The CCT value provided is of lamp source and actual CCT will vary upon power levels.
- For additional colors, refer to Architectural Paint brochure.
- Must specify DS option.
- Must specify voltage. Not available with MVOLT.
- Not available with SF or PE options.
- Provided with lens for mounting up to 8'.
- Not available with DS option.
- T-20 screws with center reject pin.

# VG05C Rough Service Ceiling/Wall-Mounted Fixture, LED

System watts	Initial delivered lumens through polycarbonate lens*	Initial delivered lumens through glass lens*	mA	Ambient temperature °C
	3500K	3500K		
40	1165	780	500	30
25	900	605	350	30

\* 3500K is LED CCT