

FEATURES & SPECIFICATIONS

INTENDED USE — Provides a minimum of 90-minutes of illumination for the rated wattage upon the loss of AC power. Ideal for applications that require ensconced emergency lighting in wall or ceiling.

CONSTRUCTION — Trim and door panels finished in durable white textured powder coated paint. Can be wall papered or field painted.

Trim and panel doors lay flush with mounting surface. No exposed hardware.

Low profile recessed test switch and status indicator configuration minimizes exposed interfaces.

Rugged, 20 GA galvanized steel box with three 3/4" knock-outs.

Galvanized bar hangers span up to 30" on center.

Vertically adjustable bar hangers allows for flush mounting of trims to ceiling face, accommodates ceiling or walls up to 5/8" thick.

OPTICS — VEL: Two MR16 halogen 12W to 75W lamps.

VELS: Two MR11 25W lamps.

180° side-to-side, 90° down-and-out, relative to mounting height.

Lamps are ensconced until activated in the emergency mode.

Models with additional wattage capacity are provided with fused remote output leads.

ELECTRICAL — Dual-voltage input capability (120/277V).

Precision-controlled motor ensures reliable extraction and retraction of light sources.

Single, multi-chromatic LED indicator to display two-state charging, test activation and four-state diagnostic status.

Test switch provides manual activation of 30-second diagnostic testing for on-demand visual inspection.

Self-diagnostics is provided as a standard feature. The diagnostic feature tests the unit once every 28 days by opening the doors for 1 second and then closing them, without turning the lamps on. Following this, a load test will be performed for 29 minutes checking for lamp, battery or transfer default. The charger function is monitored continuously.

Diagnostic evaluation of lamp, AC to DC transfer, charging and battery condition. Continuously monitors AC functionality.

IR receiver is provided as a standard feature. Requires the ELA RTVEL hand-held remote transmitter for remote testing (see accessories) for operation. Selectable 30-second or 90-minute manual testing.

Battery: VEL: Sealed, maintenance-free lead-calcium battery with capacity of 24W to 150W for a minimum of 90-minutes of emergency operation. Optional nickel-cadmium battery.

VELS: Sealed, maintenance-free lead-calcium battery with capacity of 50W for a minimum of 90-minutes of emergency operation. Optional nickel-cadmium battery.

VEL: Extended run times available. (See chart on reverse side.)

Automatically recharges after a 90-minute discharge.

Low voltage disconnect prevents excessively deep discharge that can permanently damage the battery.

Voltage polarity protected connector for reverse polarity protection.

Catalog Number
Notes
Type

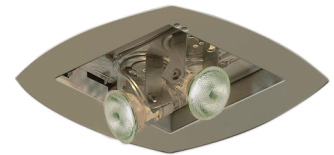
Concealed Emergency Lighting Unit

VEL-VELS

12-Volt Self-diagnostic, Sealed Lead-Calcium or Ni-Cad battery



VEL



VELS

INSTALLATION — Wall or ceiling mount. Exposed or concealed suspension ceiling systems.

T-bar clips secure unit to grid in ceiling-mount applications.

VEL: Rough-in dimensions: 13-1/2" x 6-3/4". Allow 5-1/2" for door panel opening clearance.

VELS: Rough-in dimensions: 5-1/2" x 5-1/4". Allow 2" for door panel opening clearance.

Back box dimensions: 5-1/2"W x 15-3/8"L x 4"D.

LISTINGS — UL Listed. Non-IC recessed mounting. Meets UL 924, NFPA 101, NFPA 70-NEC and OSHA illumination standards. Available with CP option for City of Chicago Environmental Air (CCEA) requirements.

WARRANTY — 3-year limited warranty. Complete warranty terms located at

www.acuitybrands.com/CustomerResources/Terms_and_conditions.aspx

Note: Actual performance may differ as a result of end-user environment and application.

Specifications subject to change without notice.

ORDERING INFORMATION

For shortest lead times, configure products using **bolded options**.

Example: VEL1270 H3512

Family ¹	Lamp type ⁴	Options
<u>Single door</u>	<u>Single door</u>	N Maintenance free ni-cad battery
VELS1250 12V, 50W	H2512 25W/12V halogen MR11 ⁵	TD Time delay
<u>Double door</u>	<u>Double door</u>	LRIS Less rough-in section ⁶
VEL1224 12V, 24W	H1212 12W/12V halogen MR16	CP Chicago plenum CCEA rated ⁷
VEL1240 12V, 40W	H2012 20W/12V halogen MR16	
VEL1270 12V, 70W ²	H3512 35W/12V halogen MR16	
VEL12100 12V, 100W ³	H5012 50W/12V halogen MR16	
VEL12150 12V, 150W ³	H7512 75W/12V halogen MR16	

Notes

- For extended run-time information, see chart on reverse side.
- Not available with H1212 lamps.
- Not available with H1212 or H2012 lamps.
- Two lamps provided. Total lamp load cannot exceed the fixture capacity rating.
- Only available with VELS.
- VEL rough-in section ships standard with fixture unless LRIS suffix is specified. The rough-in section ships in a separate carton. Requires ELA VEL RIS accessory for installation. VELS not available with LRIS.
- Must designate CP option for CCEA rating.
- Minimum one per job required for remote testing.

Accessories: Order as separate catalog number.

ELA RTVEL	Remote infra-red hand-held transmitter with selectable 30-second or 90-minute testing ⁸
ELA VEL RIS	VEL rough-in section (supplied standard with fixture unless LRIS suffix is specified) ships with mounting hardware only. Order ELA VEL RIS if needed for rough-in phase of construction ⁷
ELA VELS RIS	VELS rough-in section (supplied standard with fixture) ships with mounting hardware only. Order ELA VELS RIS if needed for rough-in phase of construction ⁷

VEL-VELS Concealed Emergency Lighting Unit, Velaré

SPECIFICATIONS

ELECTRICAL

Primary Circuit

Type	Volts	AC Input Amps	Watts	Output Volts	Output Watts 1-1/2hr.
VELS1250	120	.10	30	12	50
	277	.10	30		
VEL1224	120	.20	30	12	24
	277	.20	30		
VEL1240	120	.20	30	12	40
	277	.20	30		
VEL1270	120	.20	30	12	70
	277	.20	30		
VEL12100	120	.20	30	12	100
	277	.20	30		
VEL12150	120	.20	30	12	150
	277	.20	30		

BATTERY

Sealed Lead-Calcium

Voltage	Shelf life ¹	Typical life ¹	Maintenance ²	Operating Temperature ³
12	12 mos.	3-5 yrs.	none	60°-90°F (0°-37.8°C)

Nickel-Cadmium

Voltage	Shelf life ¹	Typical life ¹	Maintenance ²	Operating Temperature ³
12	3 yrs.	7-9 yrs.	none	32-100°F (16-32°C)

Notes

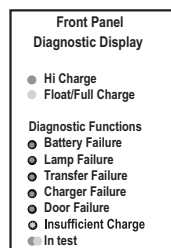
- At 77°F (25°C).
- All life safety equipment, including emergency lighting for path of egress must be maintained, serviced, and tested in accordance with all National Fire Protection Association (NFPA) and local codes. Failure to perform the required maintenance, service, or testing could jeopardize the safety of occupants and will void all warranties.
- Optimum ambient temperature range where unit will provide capacity for 90 minutes. Higher and lower temperatures affect life and capacity.

EXTENDED RUN- TIME CHART

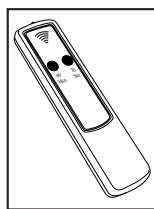
Please use the chart below to determine which model number to use to achieve an extended run time of two, three, or four hours. Example: If you require a 4-hour run time, the lowest wattage unit available is the VEL1240 H1212. The units are not loaded to full capacity which in turn extends the run time.

Run-Time Needed	Lamp Wattage				
	(2) H1212 Lamps	(2) H2012 Lamps	(2) H3512 Lamps	(2) H5012 Lamps	(2) H7512 Lamps
1-1/2 Hrs.	VEL1224 H1212	VEL1240 H2012	VEL1270 H3512	VEL12100 H5012	VEL12150 H7512
2 Hrs.	VEL1224 H1212	VEL1240 H2012	VEL1270 H3512	VEL12150 H5012	
3 Hrs.	VEL1224 H1212	VEL1270 H2012	VEL12100 H3512		
4 Hrs.	VEL1240 H1212	VEL1270 H2012	VEL12150 H3512		

KEY FEATURES



Self Diagnostics is standard



Remote transmitter hand-held accessory

DIMENSIONS

Shipping Weight:

VELS1250 H2512 LRIS (12V, 50W) - 7.5 lbs (3.4 kgs)
ELA VELS RIS (rough-in) - 6.2 lbs (2.8 kgs)

VEL1224 H1212 LRIS (12V, 24W) - 12.5 lbs (5.7 kgs)
VEL1240 H2012 LRIS (12V, 40W) - 12.5 lbs (5.7 kgs)
VEL1270 H3512 LRIS (12V, 70W) - 15 lbs (6.8 kgs)
VEL12100 H5012 LRIS (12V, 100W) - 15 lbs (6.8 kgs)
VEL12150 H7512 LRIS (12V, 150W) - 19.5 lbs (8.8 kgs)
ELA VELS RIS (rough-in) - 11 lbs (5.0 kgs)

All dimensions are in inches (centimeters), unless otherwise specified.

VELS:

Rough-in opening:

5-1/2 (14.0) x 5-1/4 (13.3)

Overlap trim:

6-1/4 (15.9) x 6-1/4 (15.9)

Allow 2" for door panel opening clearance.

VEL:

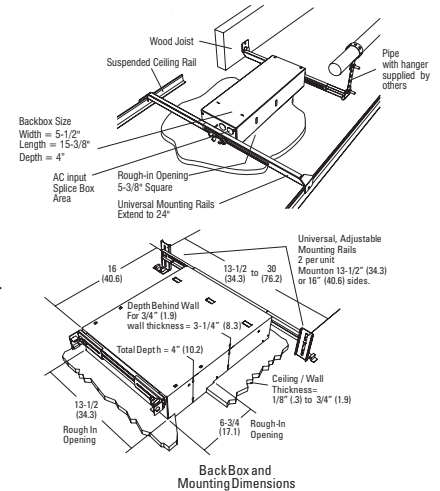
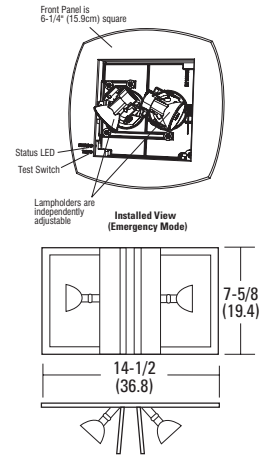
Rough-in opening:

13-1/2 (34.1) x 6-3/4 (17.0)

Overlap trim:

14-1/2 (36.8) x 7-5/8 (19.3)

Allow 5-1/2" for door panel opening clearance.

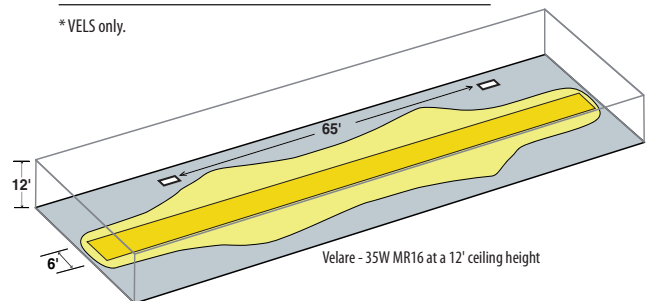


PHOTOMETRICS

Recommended Center-to-Center Spacing

	Ceiling Height			
	10'	12'	16'	20'
H2512*	80'	75'	N/A	N/A
H1212	17'	17'	16'	16'
H2012	36'	36'	34'	34'
H3512	65'	65'	58'	64'
H5012	70'	70'	70'	70'
H7512	130'	140'	134'	140'

*VELS only.



Meets Life Safety Code standard minimum illuminance of 0.1 FC and average illuminance of 1.0 FC. Assumes fixture is ceiling mounted in a 200'Wx200'L open area and reflectances of 80/50/20.

Note: All spacings are intended to be guidelines. Results will vary if application deviates from dimensions or assumptions stated above.