

FEATURES & SPECIFICATIONS

INTENDED USE — Recessed LED troffer for general illumination of Cleanroom [S05-9 (Class 100 – 100,000) environment. Typical applications include healthcare, pharmaceuticals, electronic manufacturing, and other contamination-controlled environments. **Certain airborne contaminants can diminish the integrity of acrylic and/or polycarbonate.** [Click here for Acrylic-Polycarbonate Compatibility table for suitable uses.](#)

Certain airborne contaminants may adversely affect the functioning of LEDs and other electronic components, depending on various factors such as concentrations of the contaminants, ventilation, and temperature at the end-user location. [Click here for a list of substances that may not be suitable for interaction with LEDs and other electronic components.](#)

CONSTRUCTION — Housing is made from 20-gauge cold rolled steel. Door frame is .060 painted aluminum and lens is diffused acrylic. Gasket is closed cell silicone.

Finish: All CRS (cold rolled steel) and aluminum parts are finished with electrostatically deposited, thermally set, polyester powder paint after fabrication. Door frame and enclosure finish is NSF-listed.

OPTICS — Long-life LEDs, coupled with high-efficiency drivers, provide extended service life. Lumen maintenance of L80>60,000 hours, L70>100,000 hours.

ELECTRICAL — Thermally protected, resetting, Class TL, UL listed, CSA certified driver is standard.

LED driver delivers dimming from a 0-10V control signal. Dims to 1% standard.

Luminaire Surge Protection Level: Designed to withstand up to 6kV/3kA per ANSI C82.77-5-2015.

INSTALLATION — Lay-in grid or in-ceiling sheet rock installation using swing-arms with range from 1" to 2" grid height. See drawings for other critical dimensions. Additional sealing method required for sheet rock mounted overlap door. Refer to installation instructions for more information. Swing-arms are not intended to secure fixture without additional support. Line voltage supply wiring entrance opening is 7/8".

LISTINGS — CSA certified to meet U.S. and Canadian standards (UL1598 and UL8750) or NOM Certified. IC rated. Wet location listed. IP66 with overlap door from below fixture only. Suitable for Bio Levels 1 & 2. Certified for NSF Splash Zone 2. Base configurations for use in ambient temperatures ranging from -20°C (-4°F) to 40°C (104°F) with exception of the following lumen packages (1x4 - 10000LM; 2x2 - 10000LM and 12000LM; 2x4 - 18000LM and 24000LM) and emergency or control options which are 25°C (77°F) max.

BUY AMERICAN ACT — Product with the BAA option is assembled in the USA and meets the Buy America(n) government procurement requirements under FAR, DFARS and DOT regulations. Please refer to www.acuitybrands.com/buy-american for additional information.

DesignLights Consortium® (DLC) qualified product. Not all versions of this product may be DLC qualified. Please check the DLC Qualified Products List at www.designlights.org/QPL to confirm which versions are qualified.

WARRANTY — 5-year limited warranty. This is the only warranty provided and no other statements in this specification sheet create any warranty of any kind. All other express and implied warranties are disclaimed. Complete warranty terms located at: www.acuitybrands.com/support/warranty/terms-and-conditions

Note: Actual performance may differ as a result of end-user environment and application.

All values are design or typical values, measured under laboratory conditions at 25 °C.

Specifications subject to change without notice.

Catalog Number
Notes
Type

Cleanroom LED Recessed Luminaire

SRTL



A+ Capable Luminaire

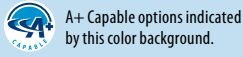
This item is an A+ capable luminaire, which has been designed and tested to provide consistent color appearance and out-of-the-box control compatibility with simple commissioning.

- All configurations of this luminaire meet the Acuity Brands' specification for chromatic consistency
- This luminaire is part of an A+ Certified solution for nLight® control networks marked by a **shaded background***

To learn more about A+, visit www.acuitybrands.com/aplus.

*See ordering tree for details

SRTL LED Recessed Cleanroom Troffer



ORDERING INFORMATION

Lead times will vary depending on options selected. Consult with your sales representative.

Example: 2SRTL G L48 18000LM IAW AFL 277 EZ1 40K 80CRI DWHXD

Series	Trim type	Length	Nominal Lumens ‡					
SRTL Recessed wet location troffer, 1' wide ‡	G Grid (9/16" - 1 1/2" W x 2" H)	L24 24"	1x4:		2x2:		2x4:	
2SRTL Recessed wet location troffer, 2' wide	F Flange	L48 48"	3000LM	3,000 lumens	3000LM	3,000 lumens	3000LM	3,000 lumens
			5000LM	5,000 lumens	5000LM	5,000 lumens	5000LM	5,000 lumens
			7000LM	7,000 lumens ‡	7000LM	7,000 lumens ‡	7000LM	7,000 lumens
			10000LM	10,000 lumens ‡	10000LM	10,000 lumens ‡	10000LM	10,000 lumens
					12000LM	12,000 lumens ‡	15000LM	15,000 lumens ‡
							18000LM	18,000 lumens ‡
							24000LM	24,000 lumens ‡

Door frame	Diffuser type	Voltage	Driver	Color temperature	Color rendering index
IAW Inset aluminum, white	AFL Acrylic, frosted	MVOLT 120-277V	EZ1 eldoLED 0-10V, ECOdrive, dimming to 1% min	30K 3000 K	80CRI 80 CRI
IAN Inset aluminum, silver		120 120V	GZ1 0-10V dimming ‡	35K 3500 K	90CRI 90 CRI
IBSN Inset brushed stainless steel, natural		208 208V		40K 4000 K	
OAW Overlapping aluminum, white		240 240V		50K 5000 K	
OAN Overlapping aluminum, silver		277 277V			
OBSN Overlapping brushed stainless steel, natural		347 347V ‡			

Options	Finish
BGTD Generator transfer device ‡	DWAM Antimicrobial, white
E10WLCP Emergency battery pack, 10W, Linear Constant Power Certified in CA Title 20 MAEDBS ‡	DWHXD Super durable, white
SF Single fusing ‡	
DF Double fusing ‡	
ST3 Constructed with US steel	
BAA Buy America(n) Act Compliant	
Individual Controls: ‡	
MSE6NWL Embedded high mount 360° motion sensor, wet location, On/Off operation ‡	
MSE62L3VWL Embedded high mount 360° motion sensor, wet location, High/Low operation (2-level) ‡	
MSE6NWL DSCNWL Embedded high mount 360° motion sensor, wet location, On/Off operation from motion sensing, Override Off due to daylight ‡	
MSE10NWL Embedded low mount 360° motion sensor, wet location, On/Off operation ‡	
MSE102L3VWL Embedded low mount 360° motion sensor, wet location, High/Low operation (2-level) ‡	
MSE10NWL DSCNWL Embedded low mount 360° motion sensor, wet location, On/Off operation from motion sensing, Override Off due to daylight ‡	
nLight: ‡	
N100 nLight® dimming pack controls, 0-10V eldoLED driver	

CONFIGURATIONS

Lumens	1' X 4'	2' X 2'	2' X 4'
3,000LM	X	X	X
5,000LM	X	X	X
7,000LM	X	X	X
10,000LM	X	X	X
12,000LM		X	
15,000LM			X
18,000LM			X
24,000LM			X

‡ Option Value Ordering Restrictions	
Option value	Restriction
1X4 7000LM	Not available with E10WLCP, Non- IC rated. Must specify voltage.
1x4 10000LM	Non-IC rated. If ordered with E10WLCP, driver must be EZ1. Must specify voltage.
2x2 7000LM	If ordered with E10WLCP, driver must be EZ1.
2x2 10000LM	Non-IC rated. Must specify voltage.
2X2 12000LM	Non-IC rated. Must specify voltage.
2X4 15000LM	Not available with GZ1. Non-IC rated. Must specify voltage.
2X4 18000LM	Not available with GZ1. Non-IC rated. Must specify voltage.
2X4 24000LM	Not available with GZ1. Non-IC Rated. Must specify voltage.
347V	Includes back box.
BGTD	Not available with MVOLT, 208v, 240v, 347v, OR E10WLCP. Only available with 120v or 277v.
DF	Only available with 208v or 240v.
E10WLCP	Must specify voltage. Not available with MVOLT, 347v, or BGTD. For use in ambient temperatures from 0°C (32°F) to 25°C (77°F). See spec sheet PS1055LCP (10W Linear Constant Power) for more information. Meets CA Title 20 compliance.
GZ1	Not available with 15000LM, 18000LM & 24000LM. Not available with Individual Controls.
Individual Controls	Cannot be used with other control options-MSE, or nLight. Not available with BGTD. Not available with GZ1.
nLight	Cannot be used with other control options-MSE, or nLight.
Nominal Lumens	Not all lumen packages are available with every length/width combination. See configuration chart for availability.
SRTL	Only available with L48 length.



SRTL

SRTL LED Recessed Cleanroom Troffer

SBG EZ – EMBEDDED Motion Sensor (see www.acuitycontrols.com for additional information)

- 360° coverage
- On/Off dim
- Photocell optional
- IP66 rated
- Photocell and 0-10VDC dimming options.

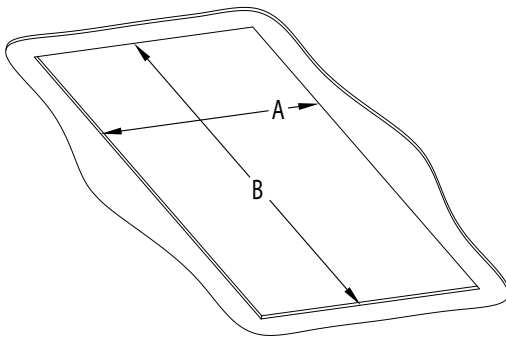


Lithonia nomenclature	Sensor Switch® nomenclature
For shortest lead times use the SBG EZ configurations	
MSE6NWL	SBG 6 EZ WH 0V 10M
MSE62L3VWL	SBG 6 EZ WH 3V
MSE6NWL DSCNWL	SBG 6 EZ P WH 0V 10M
MSE10NWL	SBG 10 EZ WH 0V 10M
MSE102L3VWL	SBG 10 EZ WH 3V
MSE10NWL DSCNWL	SBG 10 EZ P WH 0V 10M

*When ordering silver door frame, sensor will be standard white

MOUNTING DATA

Rough-in



Rough-in dimensions

Configuration	A (inches)	B (inches)
1x4	10 1/2	46 1/2
2x2	22 1/2	22 1/2
2x4	22 1/2	46 1/2

SRTL LED Recessed Cleanroom Troffer

DIMENSIONS

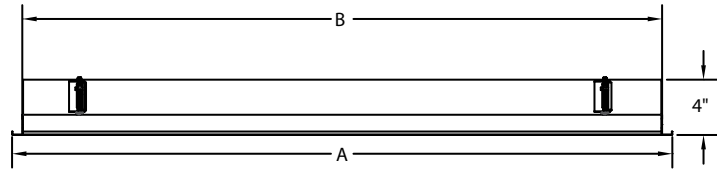
All dimensions are in inches (centimeters) unless otherwise indicated.
 Dimensions may vary with options or accessories.
 Standard height of fixture is 4". Depending on configuration, a back box may be included which adds 2 5/8" to its height.

Weight: (may vary with options or accessories)

1x4: 24 lbs (10.9 kg)

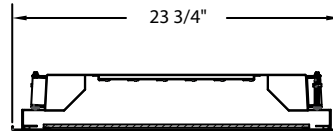
2x2: 23 lbs (10.43 kg)

2x4: 45 lbs (20.41 kg)

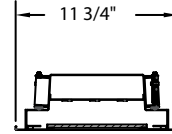


SIDE VIEW

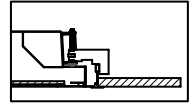
Series	Length	(A) Flange Length	(B) Housing Length
2SRTL	L48	47-3/4"	46-1/4"
2SRTL	L24	23-3/4"	22-1/4"
SRTL	L48	47-3/4"	46-1/4"



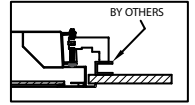
FRONT VIEW
2SRTL



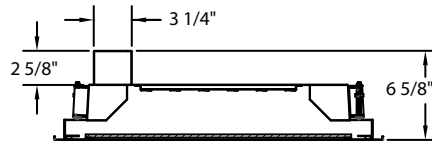
FRONT VIEW
SRTL



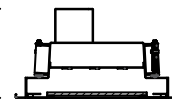
GRID MOUNTING
INSET



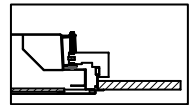
FLANGE MOUNTING
INSET



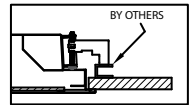
FRONT VIEW
BACK BOX
2SRTL



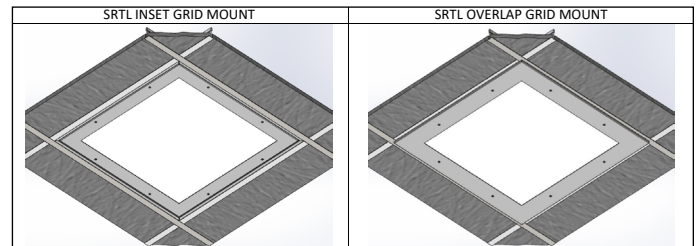
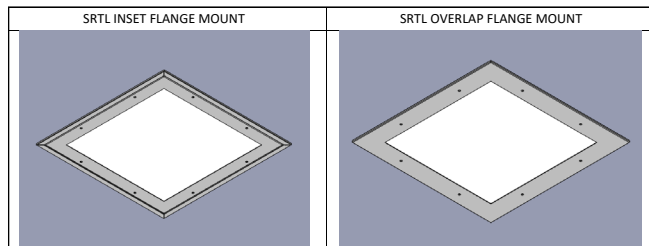
FRONT VIEW
BACK BOX
SRTL



GRID MOUNTING
OVERLAP



FLANGE MOUNTING
OVERLAP



PHOTOMETRICS

See www.lithonia.com

SRTL LED Recessed Cleanroom Troffer

OPERATIONAL DATA

Size	Lumen Package	Input Watts	Color Temp	Acrylic	
				80 CRI	90 CRI
1'x4'	3000LM	27	30K	3140	2560
		27	35K	3210	2650
		27	40K	3260	2700
		27	50K	3380	2760
	5000LM	44	30K	5175	4220
		44	35K	5291	4368
		44	40K	5373	4450
		44	50K	5571	4549
	7000LM	59	30K	6651	5422
		59	35K	6800	5613
		59	40K	6906	5719
		59	50K	7160	5847
	10000LM	88	30K	10043	8188
		88	35K	10267	8476
		88	40K	10427	8636
		88	50K	10811	8828
2'x2'	3000LM	27	30K	2871	2341
		27	35K	2935	2423
		27	40K	2981	2469
		27	50K	3091	2524
	5000LM	42	30K	4563	3720
		42	35K	4665	3851
		42	40K	4737	3923
		42	50K	4912	4011
	7000LM	61	30K	6869	5600
		61	35K	7022	5797
		61	40K	7132	5906
		61	50K	7394	6038
	10000LM	88	30K	9732	7934
		88	35K	9948	8213
		88	40K	10103	8368
		88	50K	10475	8554
	12000LM	110	30K	11835	9649
		110	35K	12099	9988
		110	40K	12287	10176
		110	50K	12739	10403

Size	Lumen Package	Input Watts	Color Temp	Acrylic	
				80 CRI	90 CRI
2'x4'	3000LM	21	30K	2648	2159
		21	35K	2707	2235
		21	40K	2749	2277
		21	50K	2850	2328
	5000LM	39	30K	4670	3807
		39	35K	4774	3941
		39	40K	4848	4015
		39	50K	5027	4105
	7000LM	59	30K	6862	5595
		59	35K	7015	5791
		59	40K	7124	5901
		59	50K	7387	6032
	10000LM	80	30K	9453	7707
		80	35K	9664	7978
		80	40K	9814	8128
		80	50K	10175	8309
	15000LM	121	30K	13984	11401
		121	35K	14295	11801
		121	40K	14518	12024
		121	50K	15052	12291
18000LM	149	30K	16916	13792	
	149	35K	17293	14276	
	149	40K	17563	14546	
	149	50K	18209	14869	
24000LM	194	30K	22820	18606	
	194	35K	23330	19260	
	194	40K	23693	19623	
	194	50K	24565	20059	

Fixture Size	Lumen Output	Number of LED Boards Light up in Emergency Mode
1x4	3000	6
	5000	6
	7000	N/A
	10000	N/A
2x2	3000	3
	5000	3
	7000	2
	10000	3
	12000	N/A
2x4	3000	6
	5000	6
	7000	4
	10000	3
	15000	2
	18000	3
24000	N/A	