



# Contractor Select

LED Wraparounds

**Familiar Design. Great Value.**  
Update to LED without breaking the bank!

The Contractor Select SBL LED and LBL LED wraparounds from Lithonia Lighting® present two affordable LED solutions for general-purpose ambient lighting. These two products look similar to traditional fluorescent wraps with all the great benefits of LED, priced for the budget-conscious.

## SBL & LBL Contractor Select Options

Catalog Number	Size	CCT	Wattage	Lumens*	Pallet Qty	Savings w/LED**
SBL2 LP835 or SBL2 LP840	2'	3500 or 4000K	16.9	1936 or 1966	140	58%
SBL4 LP835 or SBL4 LP840	4'	3500 or 4000K	32.4	3932 or 3994	70	59%
LBL2 LP835 or LBL2 LP840	2'	3500 or 4000K	16.9	2014 or 2045	112	58%
LBL4 LP835 or LBL4 LP840	4'	3500 or 4000K	32.4	4188 or 4253	56	59%

\* Nominal Lumen Output  
\*\* Energy Savings over T12 Fluorescent.

Learn more about our commercial indoor solutions at [www.acuitybrands.com](http://www.acuitybrands.com)



## Quick Facts

- Designed to replace existing 2-lamp T8 and T12 fluorescent
- Standard MVOLT (120-277) dimming driver
- Available in two CCTs: 3500K and 4000K
- Long-life LEDs
- Ideal for closets, storage rooms, hallways and office spaces



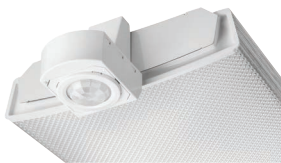
# SBL LED & LBL LED Configurable Wraparounds

**Configurable.** Specifiable. Affordable.

The SBL LED and LBL LED wraparounds from Lithonia Lighting® provide multiple LED options for general-purpose ambient lighting. With a wide range of lumen packages, configurations and control options, these luminaires allow for a one-for-one replacement of an existing wrap without disrupting the look of your overall space.

## Dimming & Control Options

Standard eldoLED® 1% dimming (EZ1) provides smooth, seamless and flicker-free 0-10V dimming. These advanced dimming capabilities save energy and prolong the life of the luminaire.



Pair the SBL LED or LBL LED with the LSXR fixture-mount occupancy sensor for additional energy savings. The LSXR can dim the luminaire down to a low-level setting or turn the luminaire completely off when the space is unoccupied.

On-board nLight® digital technology allows the luminaire to communicate with nLight control devices such as occupancy sensors, photocells and wall stations. With unmatched flexibility, nLight easily scales from one room to an entire campus.



## Lumen Packages

- SBL2 & LBL2 - 2000 lumens
- SBL4 & LBL4 - 3000, 4000, 4800, 6000, 7200 lumens
- LBL4W - 6500, 8000 lumens
- Designed to replace 2-lamp and 4-lamp fluorescent

## Color Temperatures (CCTs)

For design flexibility, the LED wraparounds are offered in four color temperatures: 3000K, 3500K, 4000K and 5000K (CRI 82)

## Performance

- Delivers over 100 LPW consistently
- 90% LED lumen maintenance at 60,000 hours (L90/60,000)

## Options

- Integrated emergency battery pack

## Configurable Options

### SBL 2' & 4'



### LBL 2' & 4'



### LBLW wide housing 4'



DesignLights Consortium® (DLC) Premium qualified product and DLC qualified product. Not all versions of this product may be DLC Premium qualified or DLC qualified. Please check the DLC Qualified Products List at [www.designlights.org/QPL](http://www.designlights.org/QPL) to confirm which versions are qualified.

Visit [www.lithonia.com](http://www.lithonia.com) for more information