

| |
|----------------|
| Catalog Number |
| Notes |
| Type |

FEATURES & SPECIFICATIONS

INTENDED USE — Ideal for use in food and beverage processing, cold storage and garden centers. Fiberglass enclosure protects fixture while remaining easy to service and clean. Not for use or installation in direct outdoor sunlight. Must be installed under canopy or covered ceiling. For direct sunlight installations, please refer to the [FEX](#) product family. **Certain airborne contaminants can diminish the integrity of acrylic and/or polycarbonate.** [Click here for Acrylic-Polycarbonate Compatibility table for suitable uses.](#)

Certain airborne contaminants may adversely affect the functioning of LEDs and other electronic components, depending on various factors such as concentrations of the contaminants, ventilation, and temperature at the end-user location. [Click here for a list of substances that may not be suitable for interaction with LEDs and other electronic components.](#)

CONSTRUCTION — One-piece 5VA rated fiberglass housing with continuous poured-in-place, closed-cell gasket. Three piece captive latches lock onto the housing to keep latches from becoming displaced during strenuous cleaning.

OPTICS — Injection-molded acrylic, impact-resistant diffuser (.080" thick), available in clear or frosted, features side lineal prisms and frosted ends (clear). Frosted lens recommended for lower mounting heights and enhanced visual comfort. UV stabilized polycarbonate diffuser option available (.080" thick) for increased impact resistance. Three piece stainless steel latches keep lens securely fastened.

ELECTRICAL — Utilizes high-efficiency LEDs mounted to core circuit boards. High-efficiency drivers operate 120-480 volt offered with 0-10 volt dimming, allowing granular control when coupled with wireless networking controls. Luminaire Surge Protection Level: Designed to withstand up to 6kV/3kA per ANSI C82.77-5-2015. Expected service life of 72,000 hours at 80% lumen maintenance (L80); predicted life of more than 100,000 hours.

INSTALLATION — Luminaire can be surface or suspend mounted. Surface Mounting requires RMKZP or RMKSS. Power connection is easily accommodated through pre-drilled holes at each end, watertight plugs ship standard on each end. Stainless steel mounting straps (standard), included for suspension with aircraft cable (cable not included). Optional stainless steel V-hooks available for chain hanging (chain not included). Mounting straps also accommodate RMKSS or RMKZP accessory for surface mounting.

LISTINGS — CSA Certified to UL and C-UL Standards. Suitable for wet location. IP65, IP66, IP67 (4ft. only) and IP69k (2ft. only) rated. NSF Splash Zone 2 and Non-Food Zone rated. NEMA 4X rated. Sensors maintain IP65 and IP66 only. Ambients listed on page 4.

DesignLights Consortium® (DLC) Premium qualified product and DLC qualified product. Not all versions of this product may be DLC Premium qualified or DLC qualified. Please check the DLC Qualified Products List at www.designlights.org/QPL to confirm which versions are qualified.

BUY AMERICAN ACT — Product with the BAA option is assembled in the USA and meets the Buy America(n) government procurement requirements under FAR, DFARS and DOT regulations. Please refer to www.acuitybrands.com/buy-american for additional information.

WARRANTY — 5-year limited warranty. This is the only warranty provided and no other statements in this specification sheet create any warranty of any kind. All other express and implied warranties are disclaimed. Complete warranty terms located at: www.acuitybrands.com/support/warranty/terms-and-conditions

NOTE: Actual performance may differ as a result of end-user environment and application. All values are design or typical values, measured under laboratory conditions at 25 °C. Specifications subject to change without notice.

High-Pressure Hose-Down



FOOD PROCESSING/
COLD STORAGE



A+ Capable Luminaire

This item is an A+ capable luminaire, which has been designed and tested to provide consistent color appearance and out-of-the-box control compatibility with simple commissioning.

- All configurations of this luminaire meet the Acuity Brands' specification for chromatic consistency
- This luminaire is part of an A+ Certified solution for nLight® or control networks marked by a **shaded background***

To learn more about A+, visit www.acuitybrands.com/aplus.

*See ordering tree for details

FHE LED High-Pressure Hose-Down, LED



A+ Capable options indicated by this color background.

ORDERING INFORMATION

Lead times will vary depending on options selected. Consult with your sales representative.

Example: FHE L24 18000LM ACL MD MVOLT GZ10 50K 80CRI

| FHE | | | | | | | | | |
|---------|--------|----------------|---------------|-------------------------|------------------------|---------------|------------------|--------------------|--|
| Series | Length | Nominal Lumens | | Diffuser | Distribution | Voltage | | Driver | |
| FHE | L24 | 9000LM | 9,000 lumens | ACL Clear acrylic | ND Narrow distribution | MVOLT | 120-277V,50/60HZ | GZ10 0-10v dimming | |
| | | 12000LM | 12,000 lumens | PCL Clear polycarbonate | MD Medium distribution | HVOLT | 347-480V,50/60HZ | | |
| | | 15000LM | 15,000 lumens | FST Frosted acrylic | | 120 | 120V, 50/60HZ | | |
| | | 18000LM | 18,000 lumens | | | 277 | 277V, 50/60HZ | | |
| | | 24000LM | 24,000 lumens | | | 347 | 347V, 50/60HZ | | |
| | | | | 480 | | 480V, 50/60HZ | | | |
| | L48 | 18000LM | 18,000 lumens | | | | | | |
| | | 24000LM | 24,000 lumens | | | | | | |
| | | 28000LM | 28,000 lumens | | | | | | |
| | | 36000LM | 36,000 lumens | | | | | | |
| 40000LM | | 40,000 lumens | | | | | | | |

| Color temperature [†] | CRI | Options | |
|--------------------------------|--------------|--|--|
| 30K 3000 K | 80CRI 80 CRI | Emergency: | Other Options: |
| 35K 3500 K | 90CRI 90 CRI | E10WLCP EM Self-diagnostics battery pack, 10W, Constant Power Certified in CA Title 20 MAEDBS [†] | BAA Buy America(n) Act Compliant |
| 40K 4000 K | | FE14WCP EM Self-diagnostics battery pack, 14W, Constant Power Certified in CA Title 20 MAEDBS, -20°C, utilizes Fulham battery [†] | EMK End mount suspension bracket [†] |
| 50K 5000 K | | Cord Sets: | MHKB Stainless steel V-hook and brackets |
| | | CS89 Cord only (no plug), 600V, STW cord, 16 gauge, 3 conductors, 6ft, white, wet location [†] | PMP4X Pendant monopoint with NEMA4X fitting [†] |
| | | CS89L12 Cord only (no plug), 600V, STW cord, 16 gauge, 3 conductors, 12ft, white, wet location [†] | RMKSS Rigid mount bracket, stainless steel [†] |
| | | CS88 Brad Harrison Mini-Change [®] cordset with straight blade plug, 600V, ST00W cord, 16 gauge, 3 conductors, 6ft, yellow [†] | RMKZP Rigid mount bracket, zinc plated [†] |
| | | CS88L12 Brad Harrison Mini-Change [®] cordset with straight blade plug, 600V, ST00W cord, 16 gauge, 3 conductors, 12ft, yellow [†] | SPD Surge protection device 10kV |
| | | CS88R Brad Harrison Mini-Change [®] receptacle [†] | WLF Wet location fitting [†] |
| | | CS93W4C Cord only (no plug), 600V, STOW cord, 18 gauge, 4 conductors, 6ft white [†] | WLFEND Wet location fitting (one end) [†] |
| | | CS6G16STOW5D Cord only (no plug), 600V, STOW cord, 18 gauge, 5 conductors, includes 0-10V dimming leads, white, 6ft [†] | WLFEND2 Wet location fitting (both ends) [†] |
| | | | Individual controls: |
| | | | MSI6NWL 360° High mount sensor, (15-30' mounting heights), outdoor PIR, on/off occupancy, wet location (LINK) [†] |
| | | | MSI62L3VWL 360° High mount sensor, (15-30' mounting heights), outdoor PIR, occupancy controlled dimming (bi-level), wet location (LINK) [†] |
| | | | MSI10NWL 360° Low mount sensor, (8-15' mounting heights), outdoor PIR, on/off occupancy, wet location (LINK) [†] |
| | | | MSI102L3VWL 360° Low mount sensor, (8-15' mounting heights), outdoor PIR, occupancy controlled dimming (bi-level), wet location (LINK) [†] |
| | | | nLight Wireless:[†] |
| | | | NLTAIR2 RSBOR6 nLight [®] Air Generation 2 enabled, 360° high mount sensor, (15-30' heights) (LINK) |
| | | | NLTAIR2 RSBOR10 nLight [®] Air Generation 2 enabled, 360° low mount sensor, (8-15' heights) (LINK) |

Accessories: Order as separate catalog number.

| Mounting Accessories (ships in pairs, order one per fixture): | Hanging Accessories (ships in pairs, order as needed): |
|---|---|
| FHEMHKB Stainless steel V-hook and brackets | MHCH36 3' Double chain [†] |
| FHEEMK End mount suspension bracket | MHHK120 10' single leg aircraft cable [†] |
| FHERMKZP Rigid mounting bracket, zinc plated | MHHK120SS 10' single leg aircraft cable, stainless steel [†] |
| FHERMKSS Rigid mounting bracket, stainless steel | FHEACT120 10' Y-toggle aircraft cable |
| | FHEACT240 20' Y-toggle aircraft cable |
| | FHEACT120SS 10' Y-toggle aircraft cable, stainless steel |
| | FHEACT240SS 20' Y-toggle aircraft cable, stainless steel |

FHE LED High-Pressure Hose-Down, LED

‡ Option Value Ordering Restrictions

| Option Value | Restriction |
|----------------------|--|
| Color Temperature | The CCT value provided is of lamp source and actual CCT will vary upon levels. |
| CS6G16STOW5D | Not available with MSI sensors, NLTAIR RSBOR6 & RSBOR10 (dimming not available). Not available with PMP4X, WLF, WLFEND2. Not NEMA 4X rated. |
| CS88, CS88L12, CS88R | Not available with PMP4X, WLF, WLFEND2. Not NEMA 4X rated. |
| CS89, CS89L12 | Not available with PMP4X, WLF, WLFEND2. Not NEMA 4X rated. |
| CS93W4C | Only available with E10WLCP & FE14WCP. Not available with PMP4X, WLF, WLFEND2. Not NEMA 4X rated. |
| E10WLCP | Utilizes Power Sentry, PS1055LCP emergency driver. Requires SPD option. Available in 9000lm and 12000lm 2ft and 18000 and 24000 4ft only. Not available in HVOLT, 347V, 480V. Not available with 3 conductor cords or plugs. |
| FE14WCP | Utilizes Fulham, FHS2-UNV-565 emergency driver. Requires SPD option. Available in 9000lm and 12000lm 2ft and 18000 and 24000 4ft only. Not available in HVOLT, 347V, 480V. Not available with 3 conductor cords or plugs. |
| EMK | Requires WLFEND2. |
| Individual Controls | Not available in MVOLT or HVOLT. Must specify voltage. Requires SPD option |
| MHCH36 | For use with MHKB option. |
| MHHK120, MHHK120SS | For use with EMK or MHKB options. |
| nLight Wireless | Requires SPD option. Not NEMA 4X rated. Normal luminaires (non-emergency) can be used as a normal power sensing device for nearby nLight AIR devices and luminaires with EM emergency options. |
| PMP4X | Only available with L24. |
| RMKSS, RMKZP | Required for Surface Mounting. |
| WLF | Not available with L24. Maintains wet location rating, not NEMA4X rated. |
| WLFEND | Maintains wet location rating, not NEMA4X rated. |
| WLFEND2 | Not available with cord set, sensor, or photocell options. Maintains wet location rating, not NEMA4X rated. |

FHE LED High-Pressure Hose-Down, LED

OPERATIONAL DATA.

| 80 CRI* | | | | | | | |
|---------|---------|---------------|-------------|--------------|--------------|------------------------|----------------------------------|
| Length | Package | Input Wattage | CCT | ACL | FST | PCL | Comparable Light Source |
| | | | | Lumens (LPW) | Lumens (LPW) | Lumens (LPW) | |
| L24 | 9000LM | 59 | 30K | 8815 (149) | 8683 (146) | 8764 (148) | 2-lamp T5HO |
| | | | 35K | 8998 (152) | 8864 (149) | 8946 (151) | |
| | | | 40K | 9416 (159) | 9276 (156) | 9363 (158) | |
| | | | 50K | 9678 (163) | 9534 (161) | 9623 (162) | |
| | 12000LM | 79 | 30K | 12009 (152) | 11830 (150) | 11941 (151) | 4-lamp T8, 250W HID |
| | | | 35K | 12259 (155) | 12076 (153) | 12189 (155) | |
| | | | 40K | 12829 (163) | 12638 (160) | 12756 (162) | |
| | | | 50K | 13185 (167) | 12989 (165) | 13110 (166) | |
| | 15000LM | 98 | 30K | 14632 (149) | 14415 (147) | 14549 (149) | 4-lamp T5HO, 6-lamp T8 |
| | | | 35K | 14936 (152) | 14714 (150) | 14851 (152) | |
| | | | 40K | 15631 (160) | 15398 (157) | 15542 (159) | |
| | | | 50K | 16065 (164) | 15826 (162) | 15974 (163) | |
| | 18000LM | 113 | 30K | 17584 (156) | 17322 (154) | 17484 (155) | 4-lamp T5HO, 6-lamp T8, 400W HID |
| | | | 35K | 17949 (159) | 17682 (157) | 17847 (159) | |
| | | | 40K | 18784 (167) | 18504 (164) | 18677 (166) | |
| | | | 50K | 19306 (171) | 19018 (169) | 19196 (171) | |
| 24000LM | 157 | 30K | 23008 (147) | 22666 (145) | 22877 (146) | 6-lamp T5HO, 8-lamp T8 | |
| | | 35K | 23486 (150) | 23136 (148) | 23352 (149) | | |
| | | 40K | 24578 (157) | 24212 (155) | 24439 (156) | | |
| | | 50K | 25261 (161) | 24885 (159) | 25118 (160) | | |
| L48 | 18000LM | 115 | 30K | 18768 (164) | 17894 (156) | 17981 (157) | 4-lamp T5HO, 6-lamp T8, 400W HID |
| | | | 35K | 19157 (167) | 18266 (159) | 18354 (160) | |
| | | | 40K | 20048 (175) | 19115 (167) | 19208 (167) | |
| | | | 50K | 20605 (180) | 19646 (171) | 19741 (172) | |
| | 24000LM | 149 | 30K | 24064 (161) | 22944 (154) | 23055 (155) | 6-lamp T5HO, 8-lamp T8 |
| | | | 35K | 24564 (165) | 23420 (157) | 23534 (158) | |
| | | | 40K | 25706 (172) | 24510 (164) | 24628 (165) | |
| | | | 50K | 26420 (177) | 25190 (169) | 25313 (170) | |
| | 28000LM | 173 | 30K | 27760 (161) | 26468 (153) | 26597 (154) | 6-lamp T5HO, 8-lamp T8 |
| | | | 35K | 28337 (164) | 27018 (156) | 27149 (157) | |
| | | | 40K | 29655 (172) | 28275 (164) | 28412 (165) | |
| | | | 50K | 30479 (177) | 29060 (168) | 29201 (169) | |
| | 36000LM | 230 | 30K | 36711 (160) | 35002 (152) | 35172 (153) | 750W MH, 8-lamp T5HO |
| | | | 35K | 37474 (163) | 35729 (155) | 35903 (156) | |
| | | | 40K | 39216 (171) | 37391 (163) | 37572 (163) | |
| | | | 50K | 40306 (175) | 38430 (167) | 38616 (168) | |
| 40000LM | 254 | 30K | 39168 (154) | 37345 (147) | 37526 (148) | 750W MH, 8-lamp T5HO | |
| | | 35K | 39982 (157) | 38121 (150) | 38306 (151) | | |
| | | 40K | 41841 (165) | 39894 (157) | 40087 (158) | | |
| | | 50K | 43003 (169) | 41002 (161) | 41201 (162) | | |

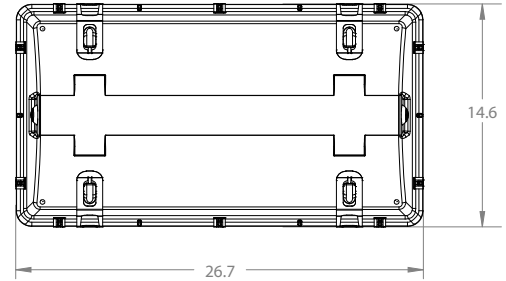
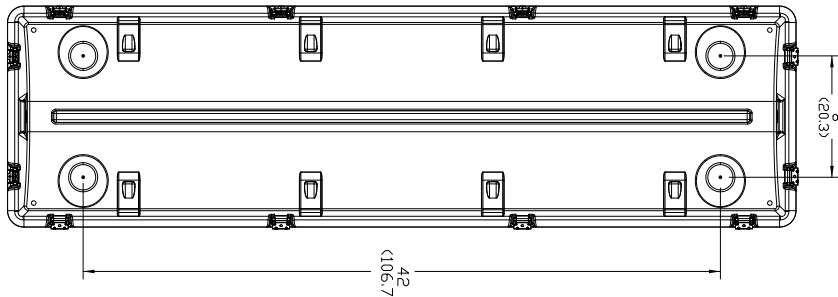
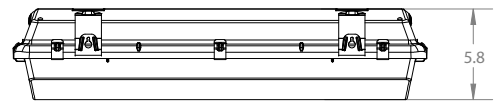
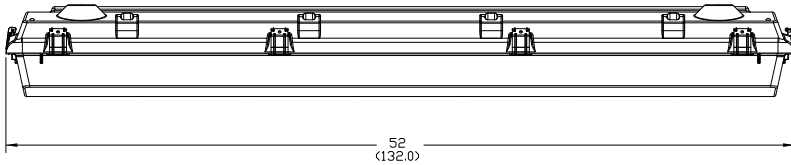
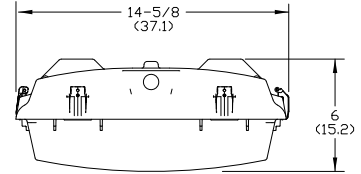
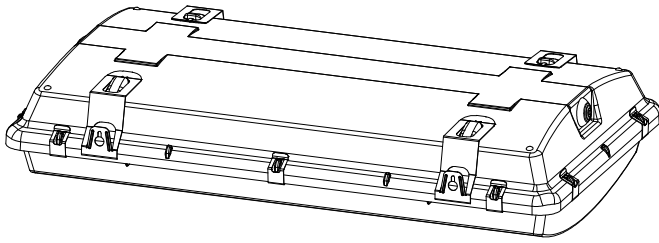
* For 90CRI, reduce lumen output by 15%

FHE LED High-Pressure Hose-Down, LED

DIMENSIONS

Inches (centimeters). Subject to change without notice.

| Length | Actual Length | Width | Height | Approximate weight | Fixtures per pallet | Approximate pallet dimensions (L x W x H) |
|--------|---------------|----------|--------|--------------------|---------------------|---|
| L24 | 26.7in | 14.625in | 6in | 18lbs. | 20 | 63x16x9 |
| L48 | 52in | 14.625in | 6in | 35lbs. | 10 | 63x16x9 |



| CSA LISTED AMBIENT RATING* | | | | | |
|----------------------------|---------|---------|-------------|---------------|-----------------|
| | | Surface | Suspended** | E10LCP Option | FE14WCP Option |
| L24 | 9000LM | 45°C | 55°C | 5°C - 30°C | -20°C - 25°C |
| | 12000LM | 45°C | 55°C | 5°C - 30°C*** | -20°C - 30°C*** |
| | 15000LM | 35°C | 50°C | - | - |
| | 18000LM | 35°C | 45°C | - | - |
| | 24000LM | 25°C | 35°C | - | - |
| L48 | 18000LM | 25°C | 50°C | 5°C - 25°C | -20°C - 25°C |
| | 24000LM | 25°C | 45°C | 5°C - 30°C*** | -20°C - 30°C*** |
| | 28000LM | 25°C | 35°C | - | - |
| | 36000LM | 25°C | 40°C | - | - |
| | 40000LM | 25°C | 40°C | - | - |

*Minimum Ambient is -40°C unless noted

** Suspended 18" from ceiling

*** Only available in suspended mounting

FHE LED High-Pressure Hose-Down, LED

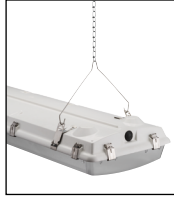
MOUNTING ACCESSORIES



MHHK (requires two pair)



FHEACT



(MHKB), (MHCH36)



FHEEMK – End mount suspension bracket**



FHERMKSS – Rigid mounting bracket, stainless steel (made from 304 stainless steel)
FHERMKZP – Rigid mounting bracket, zinc plated

PHOTOMETRICS

See www.lithonia.com for photometry reports.

rSBOR – WET LOCATION, Fixture Mount Sensor (see www.sensorswitch.com for additional information)

- 360° coverage
- On/Off dim
- Photocell optional
- IP66 rated
- Photocell and 0-10VDC dimming options.

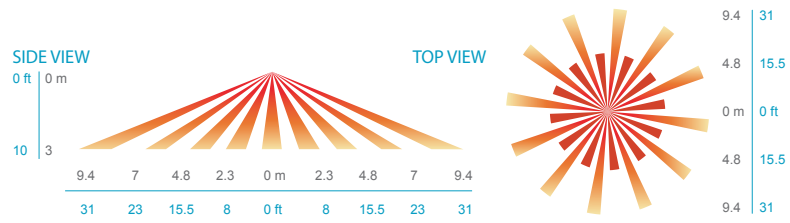
| Fixture sensor nomenclature | SBOR sensor nomenclature |
|--|--------------------------|
| For shortest lead times use one of the following SBOR configurations | |
| NLTAIR2 RSBOR6 | rSBOR 6 EB3 WH G2 |
| NLTAIR2 RSBOR10 | rSBOR 10 EB3 WH G2 |
| MS10NWL DSCNWL | SBOR 10 OEX P EB3 WH |



COVERAGE PATTERNS

PARKING GARAGE / LOW MOUNT APPLICATIONS

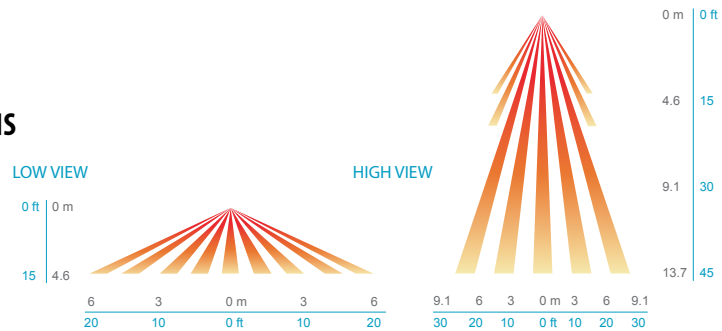
In general, the SBOR 10 is recommended for 8-15 ft (2.44-4.57 m) mounting and provides a coverage area radius for walking motion of greater than 2x the mounting height. The SBOR 10 ODP is ideal for parking garage and low pole mount applications. When mounted 10 ft high, for example, on a luminaire in a parking garage, the sensor's coverage for walking motion extends out 30 ft in a 360° pattern. This closely matches the lighting distribution of a typical parking garage luminaire. When mounted to a light pole, for example, in a parking lot or along a path, the sensor provides 270° of coverage (90° is blocked by the pole). Note, walking askew to sensor typically results in earlier detection than walking directly at sensor.



Coverage Pattern of Low Mount Lens Option (SBOR 10)

SITE & AREA LIGHTING / HIGH MOUNT APPLICATIONS

The SBOR 6 is intended for higher pole mount applications, between 15-30 ft (4.57-9.14 m), and provides a coverage area radius for walking motion of 15-20 ft (4.57-6.10 m). When mounted to a pole the sensor provides 270° of coverage (90° is blocked by the pole).



Coverage Pattern of High Mount Lens Option (SBOR 6)