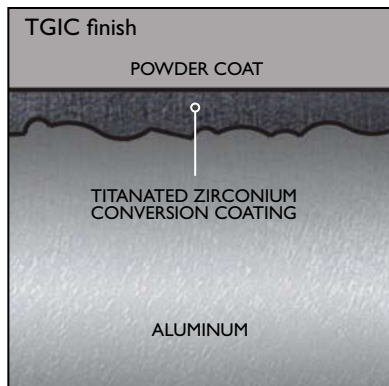


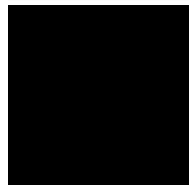
# Kim Colors & Finishes

## Aluminum Paint Colors



TGIC thermoset polyester powder coat paint, 2.5 mil nominal thickness, applied over a titanated zirconium conversion coating; 2500 hour salt spray test endurance rating. Standard colors are Black, Dark Bronze, Stealth Gray™, Platinum Silver, or White. Custom colors are available.

Not all fixtures are available in all finishes. Consult the specific Ordering Information page for available finishes.



**BL** Black



**DB** Dark Bronze



**SG** Stealth Gray™



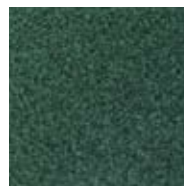
**LG** Light Gray



**PS** Platinum Silver



**WH** White



**GR** Verde Green<sup>1</sup>

Colors may vary due to monitor or printer calibration. For reference only. Contact your local representative for samples.

<sup>1</sup> Verde Green color available for Landscape products only.

## Brass, Copper and Bronze Finishes



The formula and application procedure for Kim's acid etched verde green patina was developed by the founder of Kim Lighting seven decades ago.

The proprietary finish is hand applied to selected copper and bronze fixtures to simulate the natural patina that develops on these materials after years of exposure to sun and moisture. Hand application assures a uniform appearance.

### NATURAL WEATHERING OF BRASS, COPPER, AND BRONZE

When exposed to the normal humidity and particulate matter in outside air, fixtures composed of natural, unfinished brass, copper, or bronze will rapidly age to a rich bronze color, and may develop areas of verde patina.

In general, patina forms best when the fixture is exposed to high humidity, frequent wetting and drying, or when airborne salts are present.

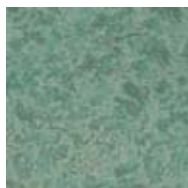
Kim Lighting's brass components are constructed from several brass parts that are manufactured by various methods at various times. Since brass naturally deepens in color as it ages through the normal oxidation process, these parts may exhibit subtle differences in coloration when the product is new. This is normal and expected. These color differences will be eliminated shortly after installation through the normal brass oxidation process.

The Kim verde finish is an accelerated aging process duplicating the natural verde that forms on copper and bronze after extended exposure to outside air and humidity. Like natural verde, Kim verde is not permanent and will undergo considerable change depending on location and environment.

Verde can be worn away by rain, sprinklers, or surrounding wind-blown foliage. New verde will eventually form depending on humidity levels and the presence of airborne salts.



**NB** Natural Brass Finish



**VG** Verde Green Patina