



TRAC-MASTER®

Low Voltage

SLANT SERIES

T805, T807 and T809

Project: _____

Fixture Type: _____

Location: _____

Contact/Phone: _____

PRODUCT DESCRIPTION

The angular design cleverly disguises the integral electronic transformer. The slant transformer allows 90° vertical aiming capability in both directions and 358° horizontal rotation. MR16 lamps provide tight beam control for dramatic lighting applications.

Socket Ceramic bi-pin.

Aiming 90° vertical aiming capability in both directions and 358° horizontal rotation.

Transformer 50VA 12V solid state electronic transformer, integral to fixture • Slant design • Dimmable.

Adapter Copper alloy contacts provide precise spring action - no arcing and will not take a set • True, positive electrical ground
 • On/off switch included • Patented embossed polarity arrows on bottom of adapter
 • Spring-loaded positive latch with embossed polarity arrows secures trac light to trac • "Pull-up" contact to up position for two-circuit application.

Labels UL listed, CSA certified.

Product specifications subject to change without notice.



Low Voltage MR16

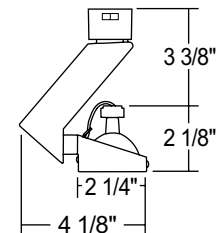
Construction Polycarbonate transformer housing with die-formed metal lamp housing.

Catalog Number	Description	Finish	Lamp
T805WH	Gimbal Ring	White	20-50W MR16
T805BL	Gimbal Ring	Black	20-50W MR16

ACCESSORIES

Cat. No.	Description	Cat. No.	Description	Cat. No.	Description
T551-5	Color Filters	T557	Prismatic Spread Lens	T559	Linear Spread Lens
T5501-18	Dichroic Lenses	T5520	Diffuse Spread Lens	T5521	Uniformity Lens
T5522	UV Filter Lens	T5559BL	Hexcell Louver		

See specification sheet D1.2.2 for details.



TRAC-MASTER®

Low Voltage

SLANT SERIES**T805, T807 and T809****PRODUCT DESCRIPTION**

The angular design cleverly disguises the integral electronic transformer. The slant transformer allows 90° vertical aiming capability in both directions and 358° horizontal rotation. MR16 lamps provide tight beam control for dramatic lighting applications.

Socket Ceramic bi-pin.

Aiming 90° vertical aiming capability in both directions and 358° horizontal rotation.

Transformer 50VA 12V solid state electronic transformer, integral to fixture • Slant design • Dimmable.

Adapter Copper alloy contacts provide precise spring action -no arcing and will not take a set • True, positive electrical ground • On/off switch included • Patented embossed polarity arrows on bottom of adapter • Spring-loaded positive latch with embossed polarity arrows secures trac light to trac • "Pull-up" contact to up position for two-circuit application.

Labels UL listed, CSA certified.

Product specifications subject to change without notice.

Low Voltage MR16

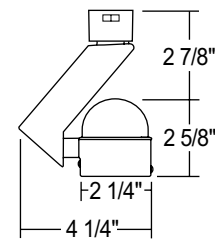
Construction Polycarbonate transformer housing with die-formed metal lamp housing and metal mesh back.

Catalog Number	Description	Finish	Lamp
T807WH	Round Back Mesh	White	20-50W MR16
T807BL	Round Back Mesh	Black	20-50W MR16

ACCESSORIES

Cat. No.	Description	Cat. No.	Description	Cat. No.	Description
T551-5	Color Filters	T557	Prismatic Spread Lens	T559	Linear Spread Lens
T5501-18	Dichroic Lenses	T5520	Diffuse Spread Lens	T5521	Uniformity Lens
T5522	UV Filter Lens	T5559BL	Hexcell Louver		

See specification sheet D1.2.2 for details.

**Low Voltage MR16**

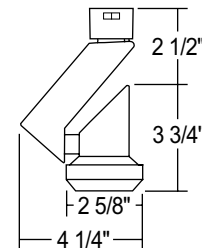
Construction Polycarbonate transformer housing with vented die-cast aluminum lamp housing.

Catalog Number	Description	Finish	Lamp
T809WH	Step Cylinder	White	20-50W MR16
T809BL	Step Cylinder	Black	20-50W MR16

ACCESSORIES

Cat. No.	Description	Cat. No.	Description	Cat. No.	Description
T558BL	Black Snoot	T556BL	Black Eyebrow	T74BL	Black Barn Door
T557	Prismatic Spread Lens	T559	Linear Spread Lens	T551-5	Color Filters
T5501-18	Dichroic Lenses	T5520	Diffuse Spread Lens	T5521	Uniformity Lens
T5522	UV Filter Lens	T5559BL	Hexcell Louver		

See Specification sheet D1.2.2 for details.



1300 S. Wolf Road • Des Plaines, IL 60018 • Phone (847) 827-9880 • Fax (847) 827-2925
 220 Chrysler Drive • Brampton, Ontario • Canada L6S 6B6 • Phone (905) 792-7335 • Fax (905) 792-0064
 Visit us at www.junolightinggroup.com

Printed in U.S.A. ©2009 Juno Lighting, LLC.