

JUNO[®]**TRAC-MASTER**[®]

Avant Garde

CAST 16[®]**T350 and T447**

Project: _____

Fixture Type: _____

Location: _____

Contact/Phone: _____

PRODUCT DESCRIPTION

The Cast 16 Series has a distinctive rectangular or cube design with subtle, rounded corners and integral miniature black baffles. These trac lights produce a controlled optical beam that is ideal for pin spotting and other display lighting applications.

Lamp 20-75W MR16 lamps.

Socket Ceramic bi-pin with integral heat shield.

Construction Cast aluminum housing.

Adapter Copper alloy contacts provide precise spring action - no arcing and will not take a set • True, positive electrical ground • On/off switch included
 • Patented embossed polarity arrows on bottom of adapter • Spring-loaded positive latch with embossed polarity arrows secures trac light to trac
 • "Pull-up" contact to up position for two-circuit application.

Labels UL listed, CSA certified.

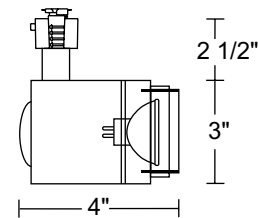
Product specifications subject to change without notice.

**Low Voltage MR16**

Transformer 12V Integral magnetic.

Aiming 90° vertical aiming capability and 321° rotation.

Catalog Number	Style	Finish	Baffle	Lamp
T350WH	Cast Rectangle	White	Black	20-75W MR16
T350BL	Cast Rectangle	Black	Black	20-75W MR16

**ACCESSORIES**

Cat. No.	Description	Cat. No.	Description	Cat. No.	Description
T551-5	Color Filters	T557	Prismatic Spread Lens	T559	Linear Spread Lens
T5501-18	Dichroic Lenses	T5520	Diffuse Spread Lens	T5521	Uniformity Lens
T5522	UV Filter Lens	T5559BL	Hexcell Louver		

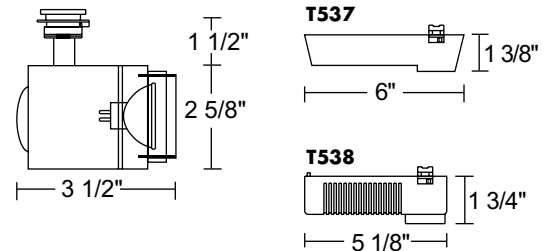
See specification sheet D1.2.2 for details.

Low Voltage MR16

Transformer **T537** or **T538** Power Pack, 12V solid state electronic transformer with on/off switch • Must be ordered separately.

Aiming 90° vertical aiming capability and 306° rotation.

Catalog Number	Style	Finish	Baffle	Lamp
T447WH	Cast Cube	White	Black	20-75W MR16
T447BL	Cast Cube	Black	Black	20-75W MR16

**ACCESSORIES**

Cat. No.	Description	Cat. No.	Description	Cat. No.	Description
T551-5	Color Filters	T557	Prismatic Spread Lens	T559	Linear Spread Lens
T5501-18	Dichroic Lenses	T5520	Diffuse Spread Lens	T5521	Uniformity Lens
T5522	UV Filter Lens	T5559BL	Hexcell Louver		

See specification sheet D1.2.2 for details.

THIS SIDE INTENTIONALLY LEFT BLANK



1300 S. Wolf Road • Des Plaines, IL 60018 • Phone (847) 827-9880 • Fax (847) 827-2925
220 Chrysler Drive • Brampton, Ontario • Canada L6S 6B6 • Phone (905) 792-7335 • Fax (905) 792-0064
Visit us at www.junolightinggroup.com

Printed in U.S.A. ©2009 Juno Lighting, LLC.