



# TRAC-MASTER®

Low Voltage

## MR16 LED-COMPATIBLE LAMP HOLDERS

**T1016, T1040, T1041, T1042 and T1043**

Project: \_\_\_\_\_

Fixture Type: \_\_\_\_\_

Location: \_\_\_\_\_

Contact/Phone: \_\_\_\_\_

### PRODUCT DESCRIPTION

These low voltage fixtures offer both mechanical and electrical compatibility with most MR16 LED lamps (by others). Constructed with open or semi-open designs, this series provides for improved airflow around the lamp, leading to better cooling and optimized LED lamp life. They may also be used with MR16 halogen lamps with integral cover glass. Versions are available with either a horizontal or vertical transformer housing. The horizontal version has an integral transformer housing which is centered above the lampholder, offering a new and unique aesthetic in a small, close-to-the-trac fixture footprint. The vertical version minimizes the fixture footprint and displaces the lampholder away from the trac, making it ideal for installation in ceiling channels.

### PRODUCT SPECIFICATIONS

**Construction** Lampholders are constructed of die cast aluminum • Transformer housings are constructed of molded polycarbonate (horizontal) or extruded aluminum (vertical).

**Socket** GU5.3/GX5.3 ceramic bi-pin.

**Lamp** Compatible with most 12VAC MR16 LED lamps (by others) – contact lamp manufacturer to confirm compatibility • Also compatible with 50W max. 12VAC MR16 halogen lamps with integral cover glass.

**Transformer** Hatch RS-12-60M-LED 60VA 12VAC solid state electronic • Integral to fixture in either horizontal or vertical orientation • ANSI/IEEE C62.41.Class A transient protection • Short circuit protection • Dimmable (with dimmable lamps) – contact lamp manufacturer to confirm compatibility.

**Adapter** Copper alloy contacts provide precise spring action - no arcing and will not take a set • True, positive electrical ground • On/off switch included • Patented embossed polarity arrows on bottom of adapter • Spring-loaded positive latch with embossed polarity arrows secures trac light to trac • “Pull-up” contact to up position for two-circuit application.

**Aiming** 90° vertical aiming capability and 358° rotation.

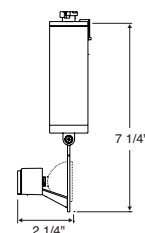
**Labels** UL and C-UL Listed • Fixtures can be assembled with reduced maximum wattage rating labels to facilitate energy code compliance – consult factory.

Product specifications subject to change without notice.

### Vertical Gimbal16

Catalog Number	Description	Finish	Lamp
<b>T1016V-WH</b>	Gimbal16 - Vertical	White	12V, 50W MR16 max.
<b>T1016V-BL</b>	Gimbal16 - Vertical	Black	12V, 50W MR16 max.
<b>T1016V-SL</b>	Gimbal16 - Vertical	Silver	12V, 50W MR16 max.

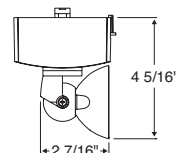
### Dimensions



### Horizontal Lily16

Catalog Number	Description	Finish	Lamp
<b>T1040H-WH</b>	Lily16 - Horizontal	White	12V, 50W MR16 max.
<b>T1040H-BL</b>	Lily16 - Horizontal	Black	12V, 50W MR16 max.
<b>T1040H-SL</b>	Lily16 - Horizontal	Silver	12V, 50W MR16 max.

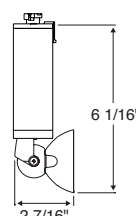
### Dimensions



### Vertical Lily16

Catalog Number	Description	Finish	Lamp
<b>T1040V-WH</b>	Lily16 - Vertical	White	12V, 50W MR16 max.
<b>T1040V-BL</b>	Lily16 - Vertical	Black	12V, 50W MR16 max.
<b>T1040V-SL</b>	Lily16 - Vertical	Silver	12V, 50W MR16 max.

### Dimensions

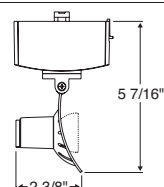


**TRAC-MASTER®**

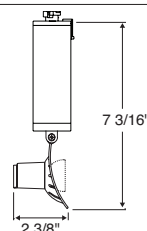
Low Voltage

**MR16 LED-COMPATIBLE LAMPHOLDERS****T1016, T1040, T1041, T1042 and T1043****Horizontal Arc16**

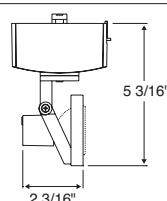
Catalog Number	Description	Finish	Lamp
<b>T1041H-WH</b>	Arc16 - Horizontal	White	12V, 50W MR16 max.
<b>T1041H-BL</b>	Arc16 - Horizontal	Black	12V, 50W MR16 max.
<b>T1041H-SL</b>	Arc16 - Horizontal	Silver	12V, 50W MR16 max.

**Dimensions****Vertical Arc16**

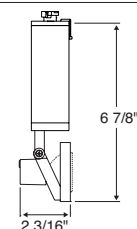
Catalog Number	Description	Finish	Lamp
<b>T1041V-WH</b>	Arc16 - Vertical	White	12V, 50W MR16 max.
<b>T1041V-BL</b>	Arc16 - Vertical	Black	12V, 50W MR16 max.
<b>T1041V-SL</b>	Arc16 - Vertical	Silver	12V, 50W MR16 max.

**Dimensions****Horizontal Concentricity16**

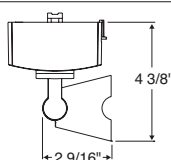
Catalog Number	Description	Finish	Lamp
<b>T1042H-WH</b>	Concentricity16 - Horizontal	White	12V, 50W MR16 max.
<b>T1042H-BL</b>	Concentricity16 - Horizontal	Black	12V, 50W MR16 max.
<b>T1042H-SL</b>	Concentricity16 - Horizontal	Silver	12V, 50W MR16 max.

**Dimensions****Vertical Concentricity16**

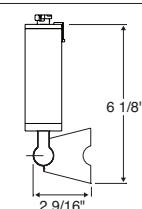
Catalog Number	Description	Finish	Lamp
<b>T1042V-WH</b>	Concentricity16 - Vertical	White	12V, 50W MR16 max.
<b>T1042V-BL</b>	Concentricity16 - Vertical	Black	12V, 50W MR16 max.
<b>T1042V-SL</b>	Concentricity16 - Vertical	Silver	12V, 50W MR16 max.

**Dimensions****Horizontal Cone16**

Catalog Number	Description	Finish	Lamp
<b>T1043H-WH</b>	Cone16 - Horizontal	White	12V, 50W MR16 max.
<b>T1043H-BL</b>	Cone16 - Horizontal	Black	12V, 50W MR16 max.
<b>T1043H-SL</b>	Cone16 - Horizontal	Silver	12V, 50W MR16 max.

**Dimensions****Vertical Cone16**

Catalog Number	Description	Finish	Lamp
<b>T1043V-WH</b>	Cone16 - Vertical	White	12V, 50W MR16 max.
<b>T1043V-BL</b>	Cone16 - Vertical	Black	12V, 50W MR16 max.
<b>T1043V-SL</b>	Cone16 - Vertical	Silver	12V, 50W MR16 max.

**Dimensions**

1300 S. Wolf Road • Des Plaines, IL 60018 • Phone (847) 827-9880 • Fax (847) 827-2925  
 220 Chrysler Drive • Brampton, Ontario • Canada L6S 6B6 • Phone (905) 792-7335 • Fax (905) 792-0064  
 Visit us at [www.junolightinggroup.com](http://www.junolightinggroup.com)

Printed in U.S.A. ©2014 Juno Lighting, LLC.