



TRAC-MASTER®

Avant Garde

CYLINDRA™ 18W LED



T252L

DESIGNLIGHTS
CONSORTIUM

Project: _____

Fixture Type: _____

Location: _____

Contact/Phone: _____

PRODUCT DESCRIPTION

The Cylindra™ 18W LED approximates the light output and distribution of 75W MR16 halogen lamps, utilizing less than 1/4 of the energy and having a rated life of 50,000 hours. It is available in 2700K, 3000K, 3500K and 4000K color temperatures with a typical 85 CRI. An optional high CRI version is available in 3000K with a typical 93 CRI and R9 greater than 50. The white-light Cylindra LED is compatible with all Juno line voltage trac and T58 monopoints. The contemporary styling of the Cylindra LED enables it to subtly enhance practically any decor without diverting attention from the surrounding environment. Soft curved surfaces combine with clean, crisp edges to provide a uniquely attractive aesthetic. Cylindra's integral, bayonet-mounted accessory holder accommodates one accessory if desired.



Fixture supplied complete
as shown in photo

Cylindra 18W LED

Construction Die cast aluminum housing provides outstanding thermal management of LED, yielding 70% average lumen maintenance at 50,000 hours of operation • Fashionable, elegant design complements any decor • Available in white, black and silver painted finishes.

LED Single Lumileds LUXEON® S LED array provides outstanding reliability, performance and color quality/consistency • 2700K, 3000K, 3500K or 4000K white phosphor high performance LEDs • Chromaticity range within a 3-step MacAdam Ellipse • Exceptional 85 CRI typical on a standard product • Optional high CRI 3000K version offers 93 CRI typical with a R9 value greater than 50.

Driver Factory assembled to lampholder and supplied complete with fixture – nothing to order separately • Solid state electronic, Class 2 compliant • Dimmable using high quality forward phase and reverse phase dimmers – contact factory for a list of approved dimmers or to confirm compatibility with desired dimmer • Designed for greater than 50,000 hour operating life • FCC Certified to Part 15 Class B EMI standards • Provides quiet operation with or without dimming • Compatible with Trac-Master or Trac-Lites Series trac or T58 monopoint or TWLED Extension Wands • Constructed in a contemporary styled, high impact polycarbonate housing (included) • Integral on/off switch.

Optics Interchangeable computer-designed custom TIR optics available in three factory-configured beam spreads • One TIR optic provided with fixture (as specified in catalog number) • Accessory optics available to enable beam changes in the field • Beam patterns can be altered as desired using a variety of available light control accessories.

Adapter Copper alloy contacts provide precise spring action - no arcing and will not take a set • True, positive electrical ground • On/off switch included • Patented embossed polarity arrows on bottom of adapter • Spring-loaded positive latch with embossed polarity arrows secures trac fixture to trac • "Pull-up" contact to upper position for two-circuit application.

Accessory Holder Integral to fixture design • Die cast aluminum construction • Precision bayonet mounting • Accommodates one accessory if desired.

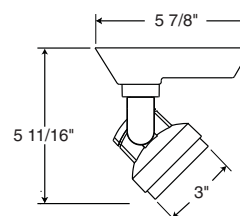
Aiming 360° horizontal coverage • 105° vertical aiming capability.

Warranty Warranty period is 5 years from date of purchase • Standard Juno Lighting Group product guarantee terms and conditions apply.

Labels UL and C-UL Listed • ENERGY STAR® Qualified • DesignLights™ Consortium Qualified.

Product specifications subject to change without notice.

DIMENSIONS



ACCESSORIES

Cat. No.	Description	Cat. No.	Description
T7459BL	Hexcell Louver	TIR-1-SP	TIR Optic - Spot
T741-6	Color Filters	TIR-1-FL	TIR Optic - Flood
T7401-16	Dichroic Filters	TIR-1-NFL	TIR Optic - Narrow Flood
T7418¹	Color Correction Filter	TWLED-12²	Extension Wand - 12"
T7420	Diffusion Lens	TWLED-18²	Extension Wand - 18"
T7421	Uniformity Lens	TWLED-24²	Extension Wand - 24"
T7477	Prismatic Spread Lens	TWLED-36²	Extension Wand - 36"
T7478	Linear Spread Lens	TWLED-48²	Extension Wand - 48"

See specification sheet [D1.2.2](#) for details.

¹T7418 corrects 3000K color to approximately 2700K and 4000K color to approximately 3400K.

²Add finish code to complete catalog number (Example: TWLED-12-WH).

LUXEON is a registered trademark of the Philips Lumileds Lighting Company

ORDERING INFORMATION

Fixture Type	Color Temperature	Color Rendering Index	Beam Spread	Finish
T252L	27K 2700K	Blank 85 CRI Typical	S 12° Spot	BL Black
18W Cylindra LED	3K 3000K	HC 93 CRI Typical	N 23° Narrow Flood	SL Silver
	35K 3500K	(3000K only)	F 34° Flood	WH White
	4K 4000K			

REV-1/7/13

Ordering Examples: T252L-27K-S-BL, T252L-3K-HC-N-WH



TRAC-MASTER®

Avant Garde

CYLINDRA™ 18W LED**T252L****PERFORMANCE DATA¹**

Catalog Number	Input Voltage	Watts (Typical)	Lumens	Efficacy (LPW)	Rated Life (Hours)
T252L-27K-S	120V	18W	817	45	50,000
T252L-27K-N	120V	18W	850	47	50,000
T252L-27K-F	120V	18W	864	48	50,000
T252L-3K-S	120V	18W	908	50	50,000
T252L-3K-N	120V	18W	944	52	50,000
T252L-3K-F	120V	18W	960	53	50,000
T252L-3K-HC-S	120V	18W	772	43	50,000
T252L-3K-HC-N	120V	18W	802	45	50,000
T252L-3K-HC-F	120V	18W	816	45	50,000
T252L-35K-S	120V	18W	926	51	50,000
T252L-35K-N	120V	18W	963	53	50,000
T252L-35K-F	120V	18W	979	54	50,000
T252L-4K-S	120V	18W	944	52	50,000
T252L-4K-N	120V	18W	982	55	50,000
T252L-4K-F	120V	18W	998	55	50,000

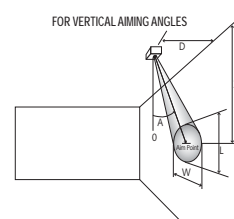
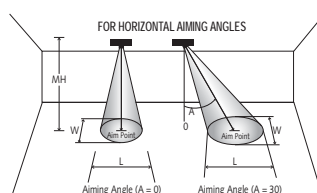
¹Performance data, including Rated Life, is based on measurements of an individual fixture operating in a 25 °C ambient.


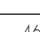

ELECTRICAL DATA

Input Voltage	120V
Input Current (max.)	0.16A
Power Factor	>0.92
T.H.D.	<20%

CBCP • Centerbeam candlepower
FC • Footcandles at beam center (aim point)

In vertical aiming applications, aim point (X) is determined by dividing distance from the wall (D) by the tangent of the desired aim angle (A) (0.5774 for 30°, 1.0 for 45°, 1.732 for 60°).



Lamp	Beam Type	Beam Spread°	Rated Life	CBCP	0°			30°			30°					45°					60°				
					MH	FC	L	W	FC	L	W	D	FC	X	L	W	FC	X	L	W	D	FC	X	L	W
Cylindra 18W LED, 3000K Spot	S	12° 	50000	11877	6	330	1.3	1.3	214	1.7	1.5	3	165	5.2	2.6	1.3	467	3.0	1.3	0.9	6	214	3.5	1.8	1.5
					8	186	1.7	1.7	121	2.3	1.9	4	93	6.9	3.5	1.7	262	4.0	1.7	1.2	8	121	4.6	2.3	1.9
					10	119	2.1	2.1	77	2.8	2.4	5	59	8.7	4.3	2.1	168	5.0	2.1	1.5	10	77	5.8	2.8	2.4
					12	82	2.5	2.5	54	3.4	2.9	6	41	10.4	5.2	2.5	117	6.0	2.6	1.8	12	54	6.9	3.4	2.9
					14	61	2.9	2.9	39	3.9	3.4	7	30	12.1	6.1	2.9	86	7.0	3.0	2.1	14	39	8.1	3.9	3.4
Cylindra 18W LED, 3000K Narrow Flood	N	23° 	50000	4616	4	289	1.6	1.6	187	2.2	1.9	2	144	3.5	3.7	1.6	408	2.0	1.7	1.2	4	187	2.3	2.2	1.9
					6	128	2.4	2.4	83	3.3	2.8	3	64	5.2	5.6	2.4	161	3.0	2.5	1.7	6	83	3.5	3.3	2.8
					8	72	3.3	3.3	47	4.4	3.8	4	36	6.9	7.4	3.3	102	4.0	3.4	2.3	8	47	4.6	4.4	3.8
					10	46	4.1	4.1	30	5.5	4.7	5	23	8.7	9.3	4.1	65	5.0	4.2	2.9	10	30	5.8	5.5	4.7
					12	32	4.9	4.9	21	6.6	5.6	6	16	10.4	11.2	4.9	45	6.0	5.1	3.5	12	21	6.9	6.6	5.6
Cylindra 18W LED, 3000K Flood	F	34° 	50000	2335	4	146	2.4	2.4	95	3.4	2.8	1	292	1.7	3.4	1.2	826	1.0	1.3	0.9	3	169	1.7	2.5	2.1
					5	93	3.1	3.1	61	4.2	3.5	2	73	3.5	6.8	2.4	206	2.0	2.7	1.7	4	95	2.3	3.4	2.8
					6	65	3.7	3.7	42	5.0	4.2	3	32	5.2	10.2	3.7	92	3.0	4.0	2.6	5	61	2.9	4.2	3.5
					7	48	4.3	4.3	31	5.9	4.9	4	18	6.9	13.6	4.9	52	4.0	5.4	3.5	6	42	3.5	5.0	4.2
					8	36	4.9	4.9	24	6.7	5.6	5	12	8.7	17.0	6.1	33	5.0	6.7	4.3	7	31	4.0	5.9	4.9

For 2700K fixtures, use 0.90 multiplier; for 3000HC fixtures, use 0.85 multiplier;
 for 3500K fixtures, use 1.02 multiplier; for 4000K fixtures, use 1.04 multiplier.



1300 S. Wolf Road • Des Plaines, IL 60018 • Phone (847) 827-9880 • Fax (847) 827-2925
 220 Chrysler Drive • Brampton, Ontario • Canada L6S 6B6 • Phone (905) 792-7335 • Fax (905) 792-0064
 Visit us at www.junolightinggroup.com

Printed in U.S.A. ©2013 Juno Lighting, LLC.