

Juno®**TRAC-MASTER®**

Avant Garde

CYLINDRA™ 15W LED**T251LED**

Project: _____

Fixture Type: _____

Location: _____

Contact/Phone: _____

PRODUCT DESCRIPTION

The Cylindra™ 15W LED approximates the light output and distribution of 50W MR16 halogen lamps, utilizing less than 1/3 of the energy and having a rated life of 50,000 hours. Available in 2700K, 3000K and 4100K color temperatures, the white-light Cylindra LED is compatible with all Juno line voltage trac and T58 monopoints. The contemporary styling of the Cylindra LED enables it to subtly enhance practically any decor without diverting attention from the surrounding environment. Soft curved surfaces combine with clean, crisp edges to provide a uniquely attractive aesthetic. Cylindra's integral, bayonet-mounted accessory holder accommodates one accessory if desired.



Fixture supplied complete
as shown in photo

Cylindra 15W LED

Construction Die cast aluminum housing and custom designed concealed heat sink provides outstanding thermal management, yielding 70% average lumen maintenance at 50,000 hours of operation • Fashionable, elegant design complements any decor • Available in white, black and silver painted finishes.

LED Lumileds LUXEON® Rebel LEDs provide outstanding reliability, performance and color quality/consistency • 2700K, 3000K or 4100K white phosphor high performance LEDs • High CRI of 85 typical.

Driver Factory assembled to lampholder and supplied complete with fixture – nothing to order separately • Solid state electronic, Class 2 compliant • Dimmable using high quality forward phase and reverse phase dimmers • Designed for greater than 50,000 hour operating life • FCC Certified to Part 15 Class B EMI standards • Provides quiet operation with or without dimming • Meets IEEE Line Transient requirements • Compatible with Trac-Master or Trac-Lites Series trac or T58 monopoint • Constructed in a contemporary styled, high impact polycarbonate housing (included) • Integral on/off switch.

Optics Available in three factory-configured beam spreads • Beam patterns can be altered as desired using a variety of available light control accessories.

Adapter Copper alloy contacts provide precise spring action - no arcing and will not take a set • True, positive electrical ground • On/off switch included • Patented embossed polarity arrows on bottom of adapter • Spring-loaded positive latch with embossed polarity arrows secures trac fixture to trac • "Pull-up" contact to upper position for two-circuit application.

Accessory Holder Integral to fixture design • Die cast aluminum construction • Precision bayonet mounting • Accommodates one accessory if desired.

Aiming 360° horizontal coverage • 105° vertical aiming capability.

Warranty Warranty period is 3-years from date of purchase • Standard Juno Lighting Group product guarantee terms and conditions apply.

Labels UL and C-UL Listed • Energy Star qualified for 2700K and 3000K color temperatures.

Product specifications subject to change without notice.

LUXEON is a registered trademark of the Philips Lumileds Lighting Company

REV-10/6/10

PRODUCT CODES

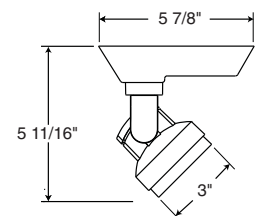
Catalog Number	Finish	Color Temperature	Nominal Wattage	Beam Spread
T251LED-27K-SP-WH	White	2700K	15W	16° Spot
T251LED-27K-SP-BL	Black	2700K	15W	16° Spot
T251LED-27K-SP-SL	Silver	2700K	15W	16° Spot
T251LED-27K-NFL-WH	White	2700K	15W	19° Narrow Flood
T251LED-27K-NFL-BL	Black	2700K	15W	19° Narrow Flood
T251LED-27K-NFL-SL	Silver	2700K	15W	19° Narrow Flood
T251LED-27K-FL-WH	White	2700K	15W	38° Flood
T251LED-27K-FL-BL	Black	2700K	15W	38° Flood
T251LED-27K-FL-SL	Silver	2700K	15W	38° Flood
T251LED-3K-SP-WH	White	3000K	15W	16° Spot
T251LED-3K-SP-BL	Black	3000K	15W	16° Spot
T251LED-3K-SP-SL	Silver	3000K	15W	16° Spot
T251LED-3K-NFL-WH	White	3000K	15W	19° Narrow Flood
T251LED-3K-NFL-BL	Black	3000K	15W	19° Narrow Flood
T251LED-3K-NFL-SL	Silver	3000K	15W	19° Narrow Flood
T251LED-3K-FL-WH	White	3000K	15W	38° Flood
T251LED-3K-FL-BL	Black	3000K	15W	38° Flood
T251LED-3K-FL-SL	Silver	3000K	15W	38° Flood
T251LED-4K-SP-WH	White	4100K	15W	16° Spot
T251LED-4K-SP-BL	Black	4100K	15W	16° Spot
T251LED-4K-SP-SL	Silver	4100K	15W	16° Spot
T251LED-4K-NFL-WH	White	4100K	15W	19° Narrow Flood
T251LED-4K-NFL-BL	Black	4100K	15W	19° Narrow Flood
T251LED-4K-NFL-SL	Silver	4100K	15W	19° Narrow Flood
T251LED-4K-FL-WH	White	4100K	15W	38° Flood
T251LED-4K-FL-BL	Black	4100K	15W	38° Flood
T251LED-4K-FL-SL	Silver	4100K	15W	38° Flood

ACCESSORIES

Cat. No.	Description	Cat. No.	Description
T7459BL	Hexcell Louver	T7420	Diffusion Lens
T741-6	Color Filters	T7421	Uniformity Lens
T7401-16	Dichroic Filters	T7477	Prismatic Spread Lens
T7418	Color Correction Filter ¹	T7478	Linear Spread Lens

See specification sheet D1.2.2 for details.

¹T7418 corrects 3000K color to approximately 2700K and 4100K color to approximately 3500K.



TRAC-MASTER®

Avant Garde

CYLINDRA™ 15W LED

T251LED

PERFORMANCE DATA¹

Catalog Number	Input Voltage	Watts (Maximum)	Watts (Typical)	Lumens	Efficacy (LPW)	Rated Life (Hours)
T251LED-27K-SP	120V	17W	15.7W	574	37	50,000
T251LED-27K-NFL	120V	17W	15.7W	566	36	50,000
T251LED-27K-FL	120V	17W	15.7W	514	33	50,000
T251LED-3K-SP	120V	17W	15.7W	604	39	50,000
T251LED-3K-NFL	120V	17W	15.7W	596	38	50,000
T251LED-3K-FL	120V	17W	15.7W	541	35	50,000
T251LED-4K-SP	120V	17W	15.7W	673	43	50,000
T251LED-4K-NFL	120V	17W	15.7W	664	42	50,000
T251LED-4K-FL	120V	17W	15.7W	603	38	50,000

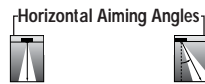
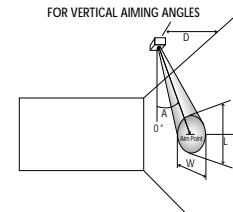
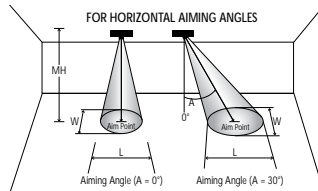
¹Performance data, including Rated Life, is based on measurements of an individual fixture operating in a 25 °C ambient.

ELECTRICAL DATA

Input Voltage	120V
Input Current (max.)	0.13A
Power Factor	>0.92
T.H.D.	<20%

CBCP • Centerbeam candlepower
FC • Footcandles at beam center (aim point)

In vertical aiming applications, aim point (X) is determined by dividing distance from the wall (D) by the tangent of the desired aim angle (A) (0.5774 for 30°, 1.0 for 45°, 1.732 for 60°).



Lamp	Beam Type	Beam Spread°	Rated Life	CBCP	0°			30°			30°			45°			60°								
					MH	FC	L	W	FC	L	W	D	FC	X	L	W	FC	X	L	W	D	FC	X	L	W
Cylindra 15W LED, 3000K Spot	SP	16°	50000	5381	4	336	1.1	1.1	218	1.5	1.3	3	75	5.2	3.6	1.7	211	3.0	1.7	1.2	4	218	2.3	1.5	1.3
					6	149	1.7	1.7	97	2.3	1.9	4	42	6.9	4.8	2.2	119	4.0	2.3	1.6	6	97	3.5	2.3	1.9
					8	84	2.2	2.2	55	3.0	2.6	5	27	8.7	6.0	2.8	76	5.0	2.9	2.0	8	55	4.6	3.0	2.6
					10	54	2.8	2.8	35	3.8	3.2	6	19	10.4	7.2	3.4	53	6.0	3.4	2.4	10	35	5.8	3.8	3.2
					12	37	3.4	3.4	24	4.5	3.9	7	14	12.1	8.4	3.9	39	7.0	4.0	2.8	12	24	6.9	4.5	3.9
Cylindra 15W LED, 3000K Narrow Flood	NFL	19°	50000	3896	4	244	1.3	1.3	158	1.8	1.5	2	122	3.5	2.9	1.3	344	2.0	1.4	0.9	4	158	2.3	1.8	1.5
					6	108	2.0	2.0	70	2.7	2.3	3	54	5.2	4.4	2.0	153	3.0	2.1	1.4	6	70	3.5	2.7	2.3
					8	61	2.7	2.7	40	3.6	3.1	4	30	6.9	5.8	2.7	86	4.0	2.8	1.9	8	40	4.6	3.6	3.1
					10	39	3.3	3.3	25	4.5	3.9	5	19	8.7	7.3	3.3	55	5.0	3.4	2.4	10	25	5.8	4.5	3.9
					12	27	4.0	4.0	18	5.4	4.6	6	14	10.4	8.8	4.0	38	6.0	4.1	2.8	12	18	6.9	5.4	4.6
Cylindra 15W LED, 3000K Flood	FL	38°	50000	1020	3	113	2.1	2.1	74	2.9	2.4	1	128	1.7	4.3	1.4	361	1.0	1.6	1.0	2	166	1.2	1.9	1.6
					4	64	2.8	2.8	41	3.8	3.2	2	32	3.5	8.6	2.8	90	2.0	3.1	1.9	3	74	1.7	2.9	2.4
					5	41	3.4	3.4	27	4.8	4.0	3	14	5.2	12.8	4.1	40	3.0	4.7	2.9	4	41	2.3	3.8	3.2
					6	28	4.1	4.1	18	5.7	4.8	4	8	6.9	17.1	5.5	23	4.0	6.3	3.9	5	27	2.9	4.8	4.0
					7	21	4.8	4.8	14	6.7	5.6	5	5	8.7	21.4	6.9	14	5.0	7.8	4.9	6	18	3.5	5.7	4.8

For 2700K fixtures, use 0.95 multiplier; for 4100K fixtures, use 1.11 multiplier.



1300 S. Wolf Road • Des Plaines, IL 60018 • Phone (847) 827-9880 • Fax (847) 827-2925
 220 Chrysler Drive • Brampton, Ontario • Canada L6S 6B6 • Phone (905) 792-7335 • Fax (905) 792-0064
 Visit us at www.junolightinggroup.com