



INSTALLATION INSTRUCTIONS

MonoLine LED Directional Fixtures

SAVE THESE INSTRUCTIONS and refer to them when making any additions or changes to the track configuration.

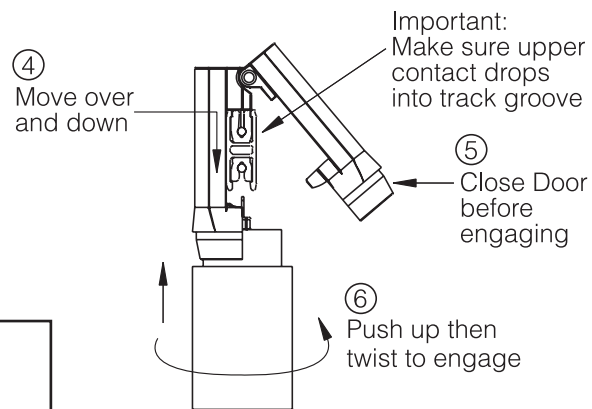
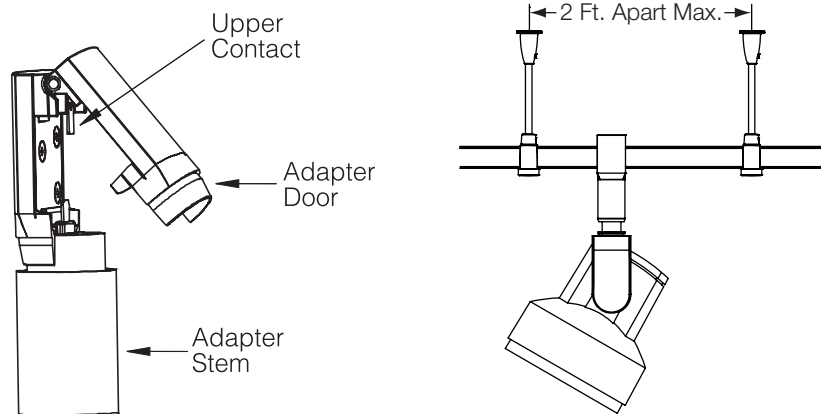
IMPORTANT SAFETY INSTRUCTIONS

1. Read all instructions prior to installing this product.
2. Disconnect electrical power before adding to or changing the configuration of the track.
3. Do not install this track in damp or wet locations.
4. Do not install any part of track system less than 5 feet above floor.
5. Do not attempt to energize anything other than lighting fixtures and fittings intended for use on MonoLine track.

MONOLINE LED DIRECTIONAL FIXTURE

Note: Fixture can only be mounted below the track.

- ① Make sure main power to system is OFF. "Hot Lamping" is not recommended.
- ② Loosen adapter stem until adapter door can be opened.
- ③ Note that the track has a wide groove on the bottom. The adapter has a feature which fits into this groove to prevent mounting it upside down.
- ④ Carefully mount adapter by moving it horizontally to track and lowering it vertically until upper contact drops into top groove of track. Keep adapter vertical at all times while installing.
- ⑤ Close adapter door completely. Pull down on fixture if necessary. Hold door closed.
- ⑥ Push up and twist adapter stem until threads engage.
- ⑦ Continue twisting adapter stem until fully raised.



CAUTION:

1. SPACE SUPPORTS NO MORE THAN 2' APART.
2. DO NOT USE CABLE SUPPORTS (MLS3 OR MLS30/31) ON SYSTEMS WITH LED DIRECTIONAL FIXTURES.

WARRANTY

Juno Lighting Group provides five year limited warranty on LED components from date of purchase. Juno Lighting Group's obligation is expressly limited to repair or replacement, without charge, at Juno Lighting Group's factory after prior written return authorization has been granted. This warranty shall not apply to products which have been altered or repaired outside of Juno Lighting Group's factory. This warranty is in lieu of all other warranties, expressed or implied, and without limiting the generality of the foregoing phrase, excludes any implied warranty of merchantability. Also, there are no warranties which extend beyond the description of the product on the company's literature setting forth terms of sale.

Product Services Phone (888) 387-2212

1300 South Wolf Road • Des Plaines, IL 60018 • www.junolightinggroup.com



JUNO LIGHTING GROUP
by Schneider Electric