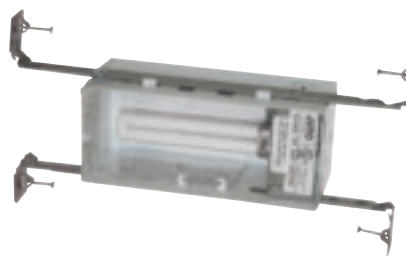


## Features

- Real Nail® 3 bar hangers: telescoping system with pre-installed removable nail for easy repositioning of housing in joist construction • Patented breakaway bars for tight joist spacing • Bar hangers may be re-positioned 90° • Quick-Loc slot and oversized set screw lock fixture in position
- Pre-wired junction box with (3) 1/2" pryout knockouts and ground wire
- UL Listed, C-UL/CSA certified for through-branch wiring, maximum (4) #12 AWG branch circuit conductors (2 in, 2 out)
- 120V NPF magnetic ballast
- Secure trim retention with torsion springs
- One 7W or 9W twin tube CFL lamp mounted horizontally in fixture
- Trim options shown below



## Description

IC Rated Step Light/Night Light housing for compact fluorescent lamp • For use indoors in insulated and non-insulated areas

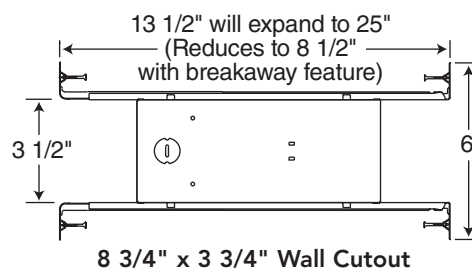
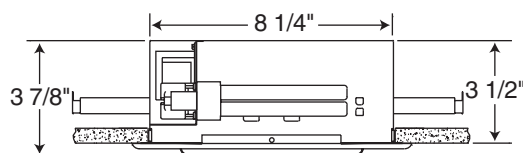
## Listings

UL Listed, C-UL/CSA certified for through-branch wiring and damp locations • Conforms with City of Chicago IP requirements.

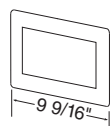
## Ordering Information

Catalog Number: **ICPL813**

## Dimensions



## Trims



**Catalog #**  
**104-WH**

**Description**  
Diffuse Glass Lens, White Trim

**Max. Lamp Rating**  
7W/9W CFL  
**Trim Size:**  
9 9/16" L x 4 7/8" H



Diffuse Lensed Trim



**Catalog #**  
**840-WH**

**Description**  
Angled Louvers, White Trim

**Max. Lamp Rating**  
7W/9W 2-pin CFL  
**Trim Size:**  
9 9/16" L x 4 7/8" H



Louvered Trim

## Features

- Medium base porcelain socket with nickel-plated copper screw shell
- Real Nail® 3 bar hangers: telescoping system with pre-installed removable nail for easy repositioning of housing in joist construction • Patented breakaway bars for tight joist spacing • Bar hangers may be re-positioned 90° • Quick-Loc slot and oversized set screw lock fixture in position
- Housing is fully assembled for ease of installation
- Pre-wired junction box with (3) 1/2" pryout knockouts and ground wire
- UL Listed, C-UL/CSA certified for No. 12 AWG daisy chain circuit connectors suitable for 90°C permitted in junction box
- Thermally protected against improper use of lamps
- Secure trim retention with torsion springs
- Trim options and A19 wattages shown below



## Description

IC Rated Step Light/Night Light housing for incandescent lamp • For use indoors in insulated and non-insulated areas

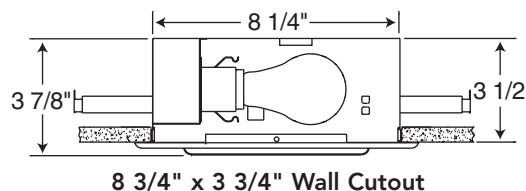
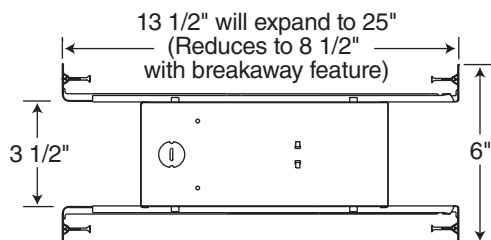
## Listings

UL Listed, C-UL/CSA certified for through-branch wiring and damp locations • Conforms with City of Chicago IP requirements

## Ordering Information

Catalog Number: **ICTC113**

## Dimensions



## Trims

	<b>Catalog #</b> 104-WH	<b>Description</b> Diffuse Glass Lens, White Trim	<b>Max. Lamp Rating</b> TC: 40W A19 IC: 25W A19 <b>Trim Size:</b> 9 9/16" L x 4 7/8" H	<p>Diffuse Lensed Trim</p>
	<b>Catalog #</b> 840-WH	<b>Description</b> Angled Louvers, White Trim	<b>Max. Lamp Rating</b> TC: 40W A19 IC: 25W A19 <b>Trim Size</b> 9 9/16" L x 4 7/8" H	<p>Louver Trim</p>