



Project: \_\_\_\_\_

Fixture Type: \_\_\_\_\_

Location: \_\_\_\_\_

Contact/Phone: \_\_\_\_\_

# INCANDESCENT LOUVERED NIGHT LIGHT

INCANDESCENT LAMP  
**ICTC113**

## PRODUCT DESCRIPTION

ICTC Housing designed for use in insulated or non-insulated areas. Refer to lamp data for correct lamp wattage.

## PRODUCT SPECIFICATIONS

**Lamp** IC - One 25W A19 lamp • TC - One 40W A19 lamp.

**Socket** Medium base porcelain with nickel-plated copper screw shell.

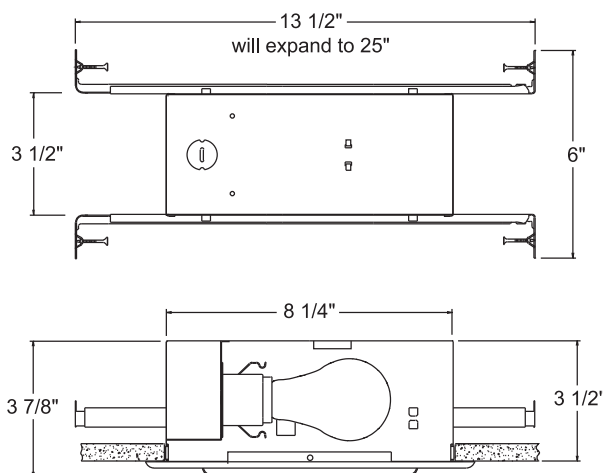
**Trims** Available in white baked enamel on steel • Fastens to housing with two torsion springs.

**Labels** UL listed for damp locations and IP • Product thermally protected against improper use of lamps • Union made AFL-CIO • UL Listed/CSA certified.

**Testing** All reports are based on published industry procedures; field performance may differ from laboratory performance.

Product specifications subject to change without notice.

## DIMENSIONS



## INSTALLATION

**Real Nail 3 Bar Hangers** Telescoping, patent-pending Real Nail 3 system permits quick placement of housing anywhere within 24" O.C. joists or suspended ceilings • Integral T-bar notch and clip secures housing in suspended ceiling grid – no accessory clips required • 24" expansion stop allows quick placement of fixture in standard grid spacing • Bars scored in two locations for fast, clean breaking, allowing housing installation in tight applications • Bars captive to mounting frame • Edge-mounted for extra strength • Captive bugle-headed ring shank nail for quick one-step installation and easy removal with claw hammer for fixture relocation • Quick-Loc slot and oversized locking set screw lock fixture in position • Bar hanger foot contoured to align to bottom of construction joist • Alternate mounting holes included.

**Junction Box** Pre-wired junction compartment provided with (3) 1/2" knockouts, and ground wire, UL Listed, C-UL/CSA certified for No. 12 AWG daisy chain circuit connectors suitable for 90° C permitted in junction box • Junction compartment provided with removable access plate • Knockouts equipped with pryout slots.

**Housing** TC housing, 22-gauge white painted steel • 8 1/4" L x 3 1/2" H x 3 1/2" D.

8 3/4" X 3 3/4" WALL CUTOUT

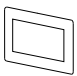

## PRODUCT CODES

Catalog Number	Input Voltage	Lamp Rating (max.)
ICTC113	120V	IC - 25W A19 / TC - 40W A19

# INCANDESCENT LOUVERED NIGHT LIGHT

INCANDESCENT LAMP  
**ICTC113**

## COMPLETE FIXTURE/LAMP

	Cat. No.	Description	Lamp Rating
	<b>104-WH</b>	Diffuse Glass Lens, White Trim	IC - 25W A19, TC - 40W A19
	<b>840-WH</b>	Angled Louvers, White Trim	IC - 25W A19, TC - 40W A19

Trim Finish: WH - White.