

**JUNO**

# 6" SLOPE CEILING LED - 900 LUMENS WARMDIM® IC NEW CONSTRUCTION HOUSING

Project: \_\_\_\_\_

Fixture Type: \_\_\_\_\_

Location: \_\_\_\_\_

Contact/Phone: \_\_\_\_\_



STANDARD SLOPE:

2/12 to 6/12 PITCH (9° to 27°)

## IC926LWD9G4 OPEN TRIMS

### PRODUCT DESCRIPTION

Dedicated LED, Air-Loc® sealed slope ceiling new construction housing with patented WarmDim® technology • LED color temperature warms while dimming to emulate the dimming performance of traditional incandescent light sources • IC rated construction housing can be completely covered with insulation • Fully sealed housing stops infiltration and exfiltration of air, reducing heating and air cooling costs without the use of additional gaskets • LED housing is designed to provide 50,000 hours of life and is compatible with standard Juno trims • 5 year limited warranty on LED components.

### ENVIRONMENTALLY FRIENDLY, ENERGY EFFICIENT

- No harmful ultraviolet or infrared wavelengths
- No lead or mercury
- Comparable light output to 26W compact fluorescent

### PRODUCT SPECIFICATIONS

**LED Light Engine** Proprietary patented micro processor controlled light engine emulates dimming performance of incandescent light source • Extruded heat sink and cast aluminum slider plate integrated directly with housing provides superior thermal management to ensure the long life of the LED • Replaceable light engine mounts directly to slider plate • 3000K color temperature at full lumen output • 90 CRI minimum throughout dimming range • Design covered under patent US 8,710,754.

**Optical System** Computer-optimized internal reflector with specular finish coupled with a high transmission diffusing lens conceals the LEDs and produces uniform aperture luminance • Adjustable slider plate to position LEDs/reflector perpendicular to floor • Plate includes 1/4" adjustment indicators for consistent alignment.

**Aesthetic Trim Selections** Compatible with a selection of existing Juno trims • Shadow free, knife edge design blends seamlessly into ceiling.

**LED Driver** Dedicated 120 volt driver • Power factor > 0.9 • Dimmable with the use of most incandescent, magnetic low voltage and electronic low voltage wall box dimmers • For a list of compatible dimmers, see [JUNOICLED-DIM](#) • Mounted inside housing on a removable J-box cover for ease of maintenance.

**Life** Rated for 50,000 hours at 70% lumen maintenance.

**Labels** ENERGY STAR® Qualified when used with select baffle and cone trims • UL listed for U.S. and Canada through-branch wiring, damp locations • Union made • UL and cUL listed.

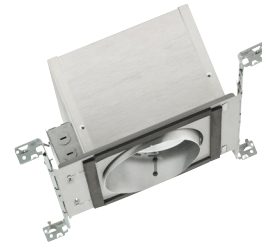
**Testing** All reports are based on published industry procedures; field performance may differ from laboratory performance.

Product specifications subject to change without notice.

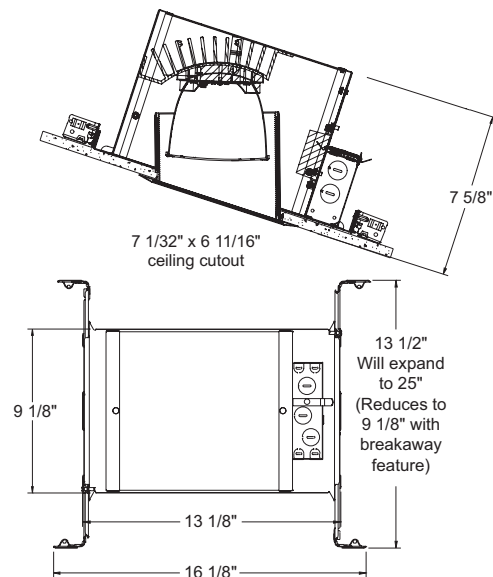
### HOUSING FEATURES

**Housing** Designed for use in IC (insulated ceiling) or non-IC construction • .032" aluminum housing sealed for Air-Loc compliance • Access door for junction box accessibility • Inner skirt is vertically adjustable to accommodate up to a 1" ceiling thickness.

**Junction Box** Pre-wired junction box provided with (5) 1/2" and (1) 3/4" knockouts, (4) non-metallic sheathed cable connectors and ground wire, UL and cUL listed for through-branch wiring, maximum 8 No. 12 AWG 90° C branch circuit conductors (4 in, 4 out) • Junction box provided with removable access plates • Knockouts equipped with pryout slots • Push-in electrical connectors supplied as standard for fast, secure installation.



### DIMENSIONS



**Mounting Frame** 22-gauge die-formed galvanized steel mounting frame • Rough-in section (junction box, mounting frame, housing and bar hangers) fully assembled for ease of installation.

**Real Nail® 3 Bar Hangers** Telescoping Real Nail® 3 system permits quick placement of housing anywhere within 24" O.C. joists or suspended ceilings • Includes removable nail for repositioning of fixture in wood joist construction • Integral T-bar mounting feature for suspended ceilings • Design covered under Patent D552,969.

# 6" SLOPE CEILING LED - 900 LUMENS WARMDIM® IC NEW CONSTRUCTION HOUSING

STANDARD SLOPE: 2/12 to 6/12 PITCH (9° to 27°)

## IC926LWD9G4 OPEN TRIMS

### ELECTRICAL DATA DEDICATED 120 VOLT ONLY DRIVER OPTION



120V	
Input Power	18.1W (+/-5%)
Input Current - Max	0.15A
Frequency	50/60Hz
EMI/RFI	FCC Title 47 CFR, Part 15, Class B (residential)
Minimum starting temp	-25°C

### ORDERING INFORMATION: Housing and trim each ordered separately.

Example: **IC926LWD9G4-3K-1**

Housing	Color Temperature	Voltage
IC926LWD9G4	3K 3000K	1 Dedicated 120V only (forward phase and ELV dimming)

Example: **614W-WH**

Trim/Description			
	<b>614B-WH<sup>1</sup></b> <b>614B-SC<sup>1</sup></b> <b>614B-ABZ<sup>1</sup></b> <b>614B-BL<sup>1</sup></b> <b>614W-WH</b>	Black Baffle Black Baffle Black Baffle Black Baffle White Baffle	
			<b>620C-WH</b> Cone - Clear Alzak® <b>620B-WH<sup>1</sup></b> Cone - Black Alzak® <b>620HZ-WH</b> Cone - Haze <b>620HZ-SC</b> Cone - Haze <b>620W-WH</b> Cone - White <b>620WHZ-WH</b> Cone - Wheat Haze <b>620WHZ-ABZ</b> Cone - Wheat Haze

Trim Size: 614 and 620 - 7<sup>3</sup>/<sub>8</sub>" x 7<sup>3</sup>/<sub>4</sub>" O.D.  
Trim Finish: ABZ - Classic Aged Bronze, BL - Black,  
SC - Satin Chrome, WH - White.

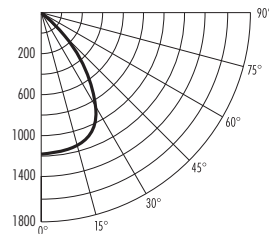
Alzak is a registered trademark of Alcoa Corp.

Note: In Canada when insulation is present, Type IC fixtures must be used.

<sup>1</sup>Not ENERGY STAR® Qualified.

### PHOTOMETRIC REPORT

Test Report #: PT02140803  
Catalog No: IC926LWD9G4-1  
with 614W-WH Trim  
Luminaire Spacing Criterion: 1.18  
Luminaire LPW: 55



### CANDLEPOWER DISTRIBUTION (Candelas)

Degrees Vertical	0°
0	1197
5	1190
10	1184
15	1186
20	1163
25	1090
30	934
35	652
40	340
45	150
50	74
55	44
60	29
65	21
70	15
75	11
80	8
85	4
90	0

### AVERAGE INITIAL FOOTCANDLES

Multiple Units (Square Array, 60'x60' room)

Ceiling 80% Wall 50% Floor 20%

Spacing	RCR1	RCR3	RCR5
4.0'	67	58	50
5.0'	43	37	32
6.0'	30	26	22
7.0'	24	21	18
8.0'	19	17	14
9.0'	15	13	11
10.0'	11	9	8

### ZONAL LUMEN SUMMARY

Zone	Lumens	%Lamp	%Fixture
0 - 30°	679	N/A	69.2
0 - 40°	852	N/A	86.8
0 - 60°	949	N/A	96.7
0 - 90°	981	N/A	100.0

### INITIAL FOOTCANDLES

(One Unit, 17.8W, 49.8° Beam)

Distance to Illuminated Plane (Feet)	Footcandles Beam Center	Beam Diameter
4	74.8	3.7'
6	33.3	5.6'
8	18.7	7.4'
10	12.0	9.3'

### LUMINANCE (Average cd/m²)

Degrees	Average Luminance
45	13763
55	4919
65	3277
75	2650
85	3267

