

# 6" SLOPE CEILING LED - 900 LUMENS IC NEW CONSTRUCTION HOUSING

Project: \_\_\_\_\_

Fixture Type: \_\_\_\_\_

Location: \_\_\_\_\_

Contact/Phone: \_\_\_\_\_

STANDARD SLOPE:

2/12 to 6/12 PITCH (9° to 27°)

## IC926LED9G4 LENSED TRIMS

### PRODUCT DESCRIPTION

Dedicated LED, Air-Loc® sealed slope ceiling new construction housing with integral light engine • IC rated construction housing can be completely covered with insulation • Fully sealed housing stops infiltration and exfiltration of air, reducing heating and air cooling costs without the use of additional gaskets • LED housing is designed to provide 50,000 hours of life and is compatible with standard Juno trims • 5 year limited warranty on LED components.

### ENVIRONMENTALLY FRIENDLY, ENERGY EFFICIENT

- No harmful ultraviolet or infrared wavelengths
- No lead or mercury
- Comparable light output to 26W compact fluorescent

### PRODUCT SPECIFICATIONS

**LED Light Engine** Extruded heat sink and cast aluminum slider plate integrated directly with housing provides superior thermal management to ensure the long life of the LED • Replaceable light engine mounts directly to slider plate and incorporates the latest generation, high lumen output LED array • LEDs are binned within a 3-step MacAdam Ellipse exceeding ENERGY STAR® requirements for superior fixture to fixture color uniformity • 2700K, 3000K, 3500K, or 4100K color temperatures available • 90 CRI minimum.

**Optical System** Computer-optimized internal reflector with specular finish coupled with a high transmission diffusing lens conceals the LEDs and produces uniform aperture luminance • Adjustable slider plate to position LEDs/reflector perpendicular to floor • Plate includes 1/4" adjustment indicators for consistent alignment.

**Aesthetic Trim Selections** Compatible with a selection of existing Juno trims • Trims are wet location approved for covered ceiling applications.

**LED Driver** Choice of dedicated 120 volt driver or universal voltage driver that accommodates input voltages from 120-277 volts AC at 50-60Hz • Power factor > 0.9 at 120V input • 120 volt only driver dimmable with the use of most incandescent, magnetic low voltage and electronic low voltage wall box dimmers • Universal voltage driver is dimmable with the use of most 0-10V wall dimmers • For a list of compatible dimmers, see [JUNOICLED-DIM](#) • Mounted inside housing on a removable J-box cover for ease of maintenance.

**Life** Rated for 50,000 hours at 70% lumen maintenance.

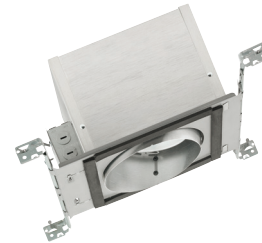
**Labels** UL listed for U.S. and Canada through-branch wiring, wet locations (covered ceilings) • Union made • UL and cUL listed.

**Testing** All reports are based on published industry procedures; field performance may differ from laboratory performance.

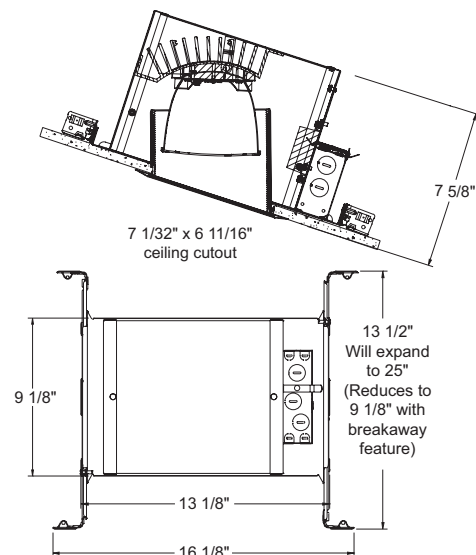
Product specifications subject to change without notice.

### HOUSING FEATURES

**Housing** Designed for use in IC (insulated ceiling) or non-IC construction • .032" aluminum housing sealed for Air-Loc compliance • Access door for junction box accessibility • Inner skirt is vertically adjustable to accommodate up to a 1" ceiling thickness.



### DIMENSIONS



**Junction Box** Pre-wired junction box provided with (5) 1/2" and (1) 3/4" knockouts, (4) non-metallic sheathed cable connectors and ground wire, UL and cUL listed for through-branch wiring, maximum 8 No. 12 AWG 90° C branch circuit conductors (4 in, 4 out) • Junction box provided with removable access plates • Knockouts equipped with pryout slots • Push-in electrical connectors supplied as standard for fast, secure installation.

**Mounting Frame** 22-gauge die-formed galvanized steel mounting frame • Rough-in section (junction box, mounting frame, housing and bar hangers) fully assembled for ease of installation.

**Real Nail® 3 Bar Hangers** Telescoping Real Nail® 3 system permits quick placement of housing anywhere within 24" O.C. joists or suspended ceilings • Includes removable nail for repositioning of fixture in wood joist construction • Integral T-bar mounting feature for suspended ceilings • Design covered under Patent D552,969.

# 6" SLOPE CEILING LED - 900 LUMENS IC NEW CONSTRUCTION HOUSING

STANDARD SLOPE: 2/12 to 6/12 PITCH (9° to 27°)

## IC926LED9G4 LENSED TRIMS

### ELECTRICAL DATA DEDICATED 120 VOLT ONLY DRIVER OPTION

	120V
Input Power	15.7W (+/-5%)
Input Current - Max	0.13A
Frequency	50/60Hz
EMI/RFI	FCC Title 47 CFR, Part 15, Class B (residential)
Minimum starting temp	-25°C

### ELECTRICAL DATA UNIVERSAL VOLTAGE

	120V	277V
Input Power	16.7W (+/-5%)	16.5W (+/-5%)
Input Current - Max	0.14A	0.06A
Frequency	50/60Hz	50/60Hz
EMI/RFI	FCC Title 47 CFR, Part 15, Class A (commercial)	FCC Title 47 CFR, Part 15, Class A (commercial)
Minimum starting temp	-40°C	-40°C

### ORDERING INFORMATION: Housing and trim each ordered separately.

Example: **IC926LED9G4-27K-1**

Housing	Color Temperature	Voltage
IC926LED9G4	27K 2700K 3K 3000K 35K 3500K 41K 4100K	1 Dedicated 120V only (forward phase and ELV dimming) U Universal Voltage 120-277V (0-10V dimming)

Example: **6330W-WH**

Trim/Description
 <b>6330W-WH</b> White Baffle, Regressed Frosted Dome Lens

UL Listed for use in wet location.

Trim Size: 7 7/8" O.D.

Trim Finish: WH - White.

Note: In Canada when insulation is present, Type IC fixtures must be used.

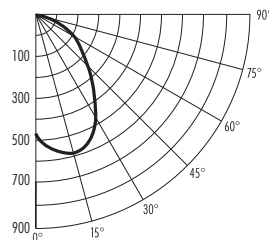
### PHOTOMETRIC REPORT

Test Report #: PTO6120505R

Catalog No: IC926LED9G4-35K-1  
with 6330W-WH Trim

Luminaire Spacing Criterion: 1.36

Luminaire LPW: 49



### CANDLEPOWER DISTRIBUTION (Candelas)

Degrees Vertical	0°
0	488
5	550
10	584
15	599
20	586
25	546
30	485
35	419
40	338
45	266
50	205
55	154
60	115
65	85
70	60
75	40
80	23
85	8
90	0

### AVERAGE INITIAL FOOTCANDLES

Multiple Units (Square Array, 60' x 60' room)

Ceiling 80% Wall 50% Floor 20%

Spacing	RCR1	RCR3	RCR5
4.0'	51	41	33
5.0'	32	26	21
6.0'	23	18	15
7.0'	18	15	12
8.0'	14	12	10
9.0'	11	9	7
10.0'	8	7	5

### ZONAL LUMEN SUMMARY

Zone	Lumens	%Lamp	%Fixture
0-30°	312	N/A	40.8
0-40°	458	N/A	59.8
0-60°	665	N/A	86.8
0-90°	765	N/A	100.0

### INITIAL FOOTCANDLES (One Unit, 15.5W, 55.6° Beam)

Distance to Illuminated Plane (Feet)	Footcandles Beam Center	Beam Diameter
4	37.4	4.2'
6	16.6	6.3'
8	9.4	8.4'
10	6.0	10.5'

### LUMINANCE (Average cd/m<sup>2</sup>)

Degrees	Average Luminance
45	24592
55	17480
65	13159
75	9987
85	6291



1300 S. Wolf Road • Des Plaines, IL 60018 • Phone (847) 827-9880 • Fax (847) 827-2925  
220 Chrysler Drive • Brampton, Ontario • Canada L6S 6B6 • Phone (905) 792-7335 • Fax (905) 792-0064  
Visit us at [www.junolightinggroup.com](http://www.junolightinggroup.com)

Printed in U.S.A. ©2014 Juno Lighting, LLC.