



Project: \_\_\_\_\_

Fixture Type: \_\_\_\_\_

Location: \_\_\_\_\_

Contact/Phone: \_\_\_\_\_

# 6" IC 900 LUMEN LED DOWNLIGHT NEW CONSTRUCTION

IC922LEDG3 RECESSED HOUSING

OPEN TRIMS



## PRODUCT DESCRIPTION

Dedicated LED, Air-Loc® sealed new construction housing with integral light engine • Shallow housing allows for fit in 2 x 6 construction • Can be completely covered with insulation • Fully sealed housing stops infiltration and exfiltration of air, reducing heating and air cooling costs without the use of additional gaskets • LED housing is designed to provide 50,000 hours of life and is compatible with many standard Juno trims • 5 year limited warranty on LED components.

## ENVIRONMENTALLY FRIENDLY, ENERGY EFFICIENT

- No harmful ultraviolet or infrared wavelengths
- No lead or mercury
- Comparable light output to 75W PAR30 incandescent while consuming less than 15W\*



## PRODUCT SPECIFICATIONS

**LED Light Engine** LED array integrated to one piece high purity aluminum, thermally conductive housing provides uninterrupted heat transfer to ensure long life of the LED • Replaceable light engine mounts directly to housing and incorporates the latest generation, high lumen output LED array • LEDs are binned to standards that exceed ENERGY STAR® requirements yielding superior fixture to fixture color uniformity • 2700K, 3000K, 3500K, or 4100K color temperatures available • 83 CRI typical.

**Optical System** Computer-optimized reflector design with high reflectance white finish coupled with a high transmission diffusing lens conceals the LEDs and produces uniform aperture luminance • Deep regression of lens produces a low glare, efficient system that produces 900 lumens typical with select trims (see page 2 for details) using less than 15W\* • Wide flood distribution shipped as standard with optional optic accessories available and sold separately.

**Aesthetic Trim Selections** Compatible with wide selection of existing Juno trims • Shadow free, knife edge design blends seamlessly into ceiling.

**LED Driver** Choice of dedicated 120 volt driver or universal voltage driver that accommodates input voltages from 120-277 volts AC at 50/60Hz • Power factor > 0.9 at 120V input • 120 volt only driver is dimmable with the use of most incandescent, magnetic low voltage and electronic low voltage wall box dimmers • Universal voltage driver is dimmable with the use of most 0-10V wall box dimmers • For a list of compatible dimmers, see [JUNOLEDG3-DIM](#) • Mounted between the j-box and housing for easy access and cool operation.

**Life** Rated for 50,000 hours at 70% lumen maintenance.

**Labels** ENERGY STAR® qualified to luminaires V1.1 requirements when used with select baffle and cone trims • Certified to the high efficiency requirements of California T24-2008 with select trims • UL listed for U.S. and Canada through-branch wiring, damp locations • Union made • UL and cUL.

**Testing** All reports are based on published industry procedures; field performance may differ from laboratory performance.

Product specifications subject to change without notice.

## HOUSING FEATURES

**Housing** Designed for use in IC (insulated ceiling) or non-IC construction • Aluminum housing sealed for Air-Loc® compliance • Housing is vertically adjustable to accommodate up to a 2" ceiling thickness.

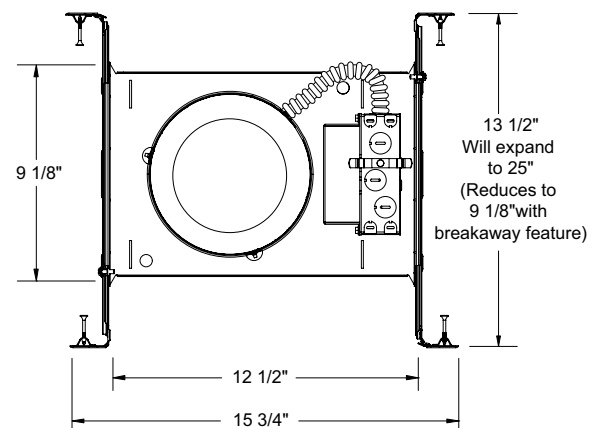
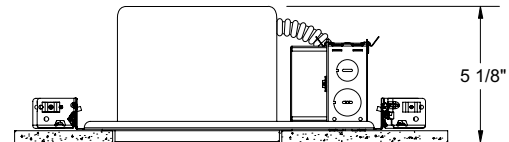
**Junction Box** Pre-wired junction box provided with (5) ½" and (1) ¾" knockouts, (4) knockouts for 12/2 or 14/2 NM cable and ground wire • UL listed and cUL listed for through-branch wiring, maximum 8 #12 branch circuit conductors • Junction box provided with removable access plates • Knockouts equipped with pryout slots • Quick connect electrical connectors supplied as standard for fast, secure installation.

**Mounting Frame** 22-gauge die-formed galvanized steel mounting frame • Rough-in section (junction box, mounting frame, housing and bar hangers) fully assembled for ease of installation.

**Real Nail 3 Bar Hangers** Telescoping Real Nail 3® system permits quick placement of housing anywhere within 24" O.C. joists or suspended ceilings • Includes removable nail for repositioning of fixture in wood joist construction • Integral T-bar notch and clip for suspended ceilings • Design covered under Patents US5,505,419 and D552,969.

\* Nominal input wattage @ 120-volt operation with dedicated 120-volt driver under stable operating conditions.

## DIMENSIONS



6 7/8" CEILING CUTOUT

## ELECTRICAL DATA

### Dedicated 120V Only Driver Option

120V	
Input Power	14.6W (+/-5%)
Input Current - Max	0.14A
Frequency	50/60Hz
EMI/RFI	FCC Title 47 CFR, Part 18 Class B (consumer)
Minimum starting temp	-20°C

## ELECTRICAL DATA

### Universal Voltage

	120V	277V
Input Power	15.8W (+/-5%)	16.1W (+/-5%)
Input Current - Max	0.145A	0.064A
Frequency	50/60Hz	50/60Hz
EMI/RFI	FCC Title 47 CFR, Part 15 Class A (non-consumer)	FCC Title 47 CFR, Part 15 Class A (non-consumer)
Minimum starting temp	-40°C	-40°C



JUNO LIGHTING GROUP  
by Schneider Electric

# 6" IC 900 LUMEN LED DOWNLIGHT NEW CONSTRUCTION

## IC922LEDG3 RECESSED HOUSING OPEN TRIMS

**ORDERING INFORMATION:** Housing, trim and accessories each ordered separately.

Example: **IC922LEDG3-3K-1**

Housing	Color Temperature	Input Voltage
<b>IC922LEDG3</b>	<b>27K</b> 2700K <b>3K</b> 3000K <b>35K</b> 3500K <b>41K</b> 4100K	<b>1</b> Dedicated 120V Only (Forward Phase + ELV dimmable)  <b>U</b> Universal Voltage, 120-277V (0-10V dimmable)

### ACCESSORIES

Catalog No.	Description
<b>LEDOPTICG3-M</b>	Medium Flood Optic (50°)
<b>LEDOPTICG3-N</b>	Narrow Flood Optic (37°)
<b>LEDOPTICG3-S</b>	Spot Optic (10°)

To order, specify catalog number.

Example: **24W-WH**

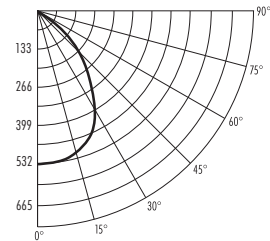
Trim/Description	
<b>24W-WH<sup>1</sup></b> <b>24B-WH<sup>1,3</sup></b> <b>24B-SC<sup>1,3</sup></b> <b>24B-ABZ<sup>1,3</sup></b> <b>24B-BL<sup>1,3</sup></b>	Conical White Baffle Conical Black Baffle Conical Black Baffle Conical Black Baffle Conical Black Baffle
<b>27C-WH<sup>4</sup></b> <b>27G-WH<sup>4</sup></b> <b>27B-WH<sup>1,3</sup></b> <b>27PT-SC<sup>2</sup></b> <b>27W-WH<sup>2</sup></b> <b>27HZ-WH<sup>2</sup></b> <b>27WHZ-WH<sup>4</sup></b> <b>27WHZ-ABZ<sup>4</sup></b>	Conical Cone in Clear Alzak® Conical Cone in Gold Alzak® Conical Cone in Black Alzak® Conical Cone in Pewter Alzak® Conical Cone in Gloss White Conical Cone in Haze Conical Cone in Wheat Haze Conical Cone in Wheat Haze
<b>9024W-WH</b>	White Octagonal w/ White Baffle
<b>9324-SC</b>	Luminous Disc (Frosted)
<b>9524-SC</b>	Chrome Band
<b>9702</b>	Luminous Collar (Frosted)

Trim Size: 24, 27, 9324, 9524 - 7 $\frac{1}{8}$ " O.D.; 9702 - 7 $\frac{3}{4}$ " O.D.; 9024 - 8" O.D.  
Trim Finish: ABZ - Classic Aged Bronze, BL - Black, SC - Satin Chrome, WH - White.  
Alzak is a registered trademark of Alcoa Corp.  
Note: In Canada when insulation is present, Type IC fixtures must be used.

<sup>1</sup> Not ENERGY STAR rated  
<sup>2</sup> Universal Voltage:  
T24 @ 35K, 41K only  
<sup>3</sup> 120V:  
T24 @ 3K, 35K, 41K only  
<sup>4</sup> Universal Voltage:  
T24 @ 3K, 35K, 41K only  
<sup>5</sup> 120V only:  
T24 certified

### PHOTOMETRIC REPORT

Test Report #: LTL25977R  
Catalog No: IC922LEDG3-35K  
with 24W-WH Trim  
and standard wide flood optic  
Luminaire Spacing Criterion: 1.16  
Luminaire LPW: 60



### CANDLEPOWER DISTRIBUTION (Candelas)

Degrees Vertical	0°
0	531
5	528
15	500
25	444
35	344
45	183
55	80
65	38
75	21
85	6
90	0

Multiplier: 27K - 0.90  
3K - 0.97  
41K - 1.04

### AVERAGE INITIAL FOOTCANDLES

Multiple Units (Square Array, 60'x60' room)  
Ceiling 80% Wall 50% Floor 20%

Spacing	RCR1	RCR3	RCR5
4.0'	61	51	44
5.0'	39	33	28
6.0'	27	23	20
7.0'	22	18	16
8.0'	17	15	12
9.0'	13	11	10
10.0'	10	8	7

### ZONAL LUMEN SUMMARY

Zone	Lumens	%Lamp	%Fixture
0-30°	395	N/A	44.4
0-40°	607	N/A	68.2
0-60°	823	N/A	92.5
0-90°	890	N/A	100.0

### INITIAL FOOTCANDLES

(One Unit, 14.9W, 79.8° Beam)

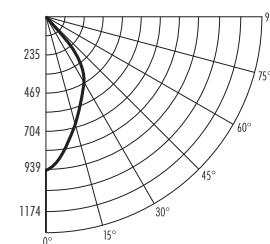
Distance to Illuminated Plane (Feet)	Footcandles Beam Center	Beam Diameter
4	33.2	6.7'
6	14.8	10.0'
8	8.3	13.4'
10	5.3	16.7'

### LUMINANCE (Average cd/m²)

Degrees	Average Luminance
45	15442
55	8313
65	5305
75	4933
85	4091

### PHOTOMETRIC REPORT

Test Report #: LTL25978R  
Catalog No: IC922LEDG3-35K  
with 27C-WH Trim  
and standard wide flood optic  
Luminaire Spacing Criterion: 0.78  
Luminaire LPW: 63



### CANDLEPOWER DISTRIBUTION (Candelas)

Degrees Vertical	0°
0	939
5	880
15	668
25	524
35	375
45	179
55	57
65	12
75	0
85	0
90	0

Multiplier: 27K - 0.90  
3K - 0.97  
41K - 1.04

### AVERAGE INITIAL FOOTCANDLES

Multiple Units (Square Array, 60'x60' room)  
Ceiling 80% Wall 50% Floor 20%

Spacing	RCR1	RCR3	RCR5
4.0'	65	54	47
5.0'	42	35	30
6.0'	29	24	21
7.0'	23	20	17
8.0'	18	15	13
9.0'	14	12	10
10.0'	10	9	7

### ZONAL LUMEN SUMMARY

Zone	Lumens	%Lamp	%Fixture
0-30°	508	N/A	53.8
0-40°	739	N/A	78.3
0-60°	932	N/A	98.7
0-90°	945	N/A	100.0

### INITIAL FOOTCANDLES

(One Unit, 14.9W, 58.0° Beam)

Distance to Illuminated Plane (Feet)	Footcandles Beam Center	Beam Diameter
4	58.7	4.4'
6	26.1	6.7'
8	14.7	8.9'
10	9.4	11.1'

### LUMINANCE (Average cd/m²)

Degrees	Average Luminance
45	15103
55	5914
65	1632
75	0
85	0

Fixtures tested to IES recommended standard for solid state lighting per LM-79-08. Photometric performance on a single unit represents a baseline of performance for the fixture. Results may vary in the field.



1300 S. Wolf Road • Des Plaines, IL 60018 • Phone (847) 827-9880 • Fax (847) 827-2925  
220 Chrysler Drive • Brampton, Ontario • Canada L6S 6B6 • Phone (905) 792-7335 • Fax (905) 792-0064  
Visit us at [www.junolightinggroup.com](http://www.junolightinggroup.com)

Printed in U.S.A. ©2011 Juno Lighting, LLC.