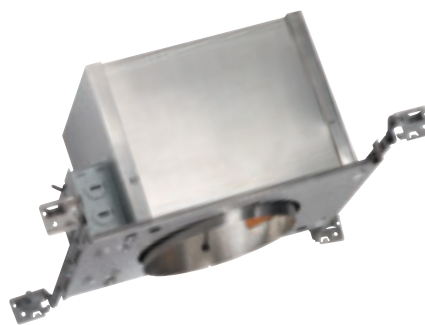


Features

- 6" Standard slope housing (oval)
- Oblique angle housing design holds trims flush with the ceiling
- Adjustable socket plate permits lamp to remain perpendicular to floor through entire pitch range
- Medium base porcelain socket with nickel-plated copper screw shell
- Housing is vertically adjustable to accommodate up to a 1" ceiling thickness
- Real Nail® 3 bar hangers: telescoping system with pre-installed removable nail for easy repositioning of housing in joist construction • Integral T-bar mounting feature for secure installation in suspended ceilings • Patented break-away bars for tight joist spacing • Bar hangers may be re-positioned 90° • Curved foot facilitates alignment with joist bottom • Quick-Loc slot and oversized set screw lock fixture in position
- Housing is fully assembled for ease of installation
- Pre-wired junction box with (5) 1/2" and (1) 3/4" knockouts with pryout slots, (4) non-metallic sheathed cable connectors, and ground wire
- Shadow-free, knife-edge trim design blends smoothly into the ceiling and allows architectural continuity with Aculux® trims
- Angle-cut baffles ensure grooves remain parallel to the floor to provide proper optics
- UL Listed, C-UL/CSA certified for through-branch wiring, maximum (8) #12 AWG branch circuit conductors (4 in, 4 out)
- Thermally protected against improper use of lamps
- Lamp wattage ratings and apertures based on trim selection on page 116



Description

IC rated, energy efficient Air-Loc® double wall construction housing for use in 2/12 to 6/12 pitch slopes (9° to 27°) • Can be completely covered with insulation • Air-Loc installation stops infiltration and exfiltration of air, reducing heating and cooling costs • Juno's patented Slope Ceiling Down-Lites direct light straight down, providing proper lighting from a sloped surface

Listings

UL Listed, C-UL/CSA certified for through-branch wiring, damp and wet locations • Wet location listed with the 610 trim • Washington State IECC and MEC energy codes as tested per ASTM-E283 • Conforms with City of Chicago IP requirements

Ordering Information

Catalog Number: **IC926**

Catalog Number: **IC926W** - IC926 with push-in electrical connectors for fast, secure installation

Dimensions

