

## JUNO TYPE IC20RLED & IC22RLED REMODEL RECESSED HOUSING

**WARNING:** For your safety, read and understand instructions completely before starting installation.

Before wiring to power supply, turn off electricity at the fuse or circuit breaker box.

**NOTE:** Juno recessed fixtures are designed to meet the latest NEC requirements and are listed in full compliance with UL 1598. Before attempting installation of any recessed lighting fixture, check your local electrical building code. This code sets the wiring standards and installation requirements for your locality and should be understood before starting work. Use of non-Juno trims voids Juno warranty.

## SAVE THESE INSTRUCTIONS

### IMPORTANT SAFEGUARDS:

When using electrical equipment, always adhere to basic safety precautions including the following:

### TYPE IC FOR INSULATED CEILINGS

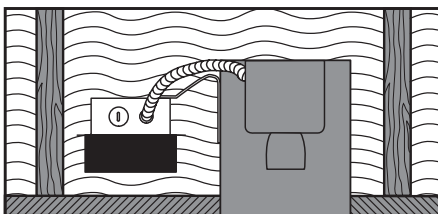


Figure 1

Juno Type IC fixtures are designed for direct contact with insulating materials which are approved for this application (Fig. 1). Fixtures may also be used in non-insulated ceilings.

Juno Air-Loc LED housings are supplied with an Air-Loc gasket kit for energy savings and to comply with Washington State and other energy codes.

### INSTALLATION STEPS

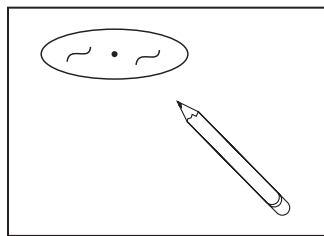


Figure 2

**Step 1.** Remove the separately packed reflector from the fixture carton and store in a safe place for future installation.

**Step 2.** Locate center of proposed opening on ceiling and use template to mark and accurately cut a 5-1/2" (for 5" housings) or a 6-5/8" (for 6" housings) opening (Fig. 2).

**Step 3.** Locate Air-Loc gasket kit envelope supplied in fixture carton. Place foam gasket on the top surface of the metal ring of can (Fig 3).

**Step 4.** Follow steps 1-4 under Electrical Connection.

**Step 5.** Press housing through ceiling opening so it is flush to ceiling (Fig. 4). Push retention clips outward until each clip tab clicks into position. A single "T" slot clip is provided for additional support. Insert clip through "T" slot from inside housing, force clip down with screwdriver until clip is seated. Secure clip by tightening screw (Fig. 5). *Note: To remove housing from ceiling, push tab on clip upward to disengage.*

**Step 6.** Apply tape strips over each of the three retention clips and slots. Cover completely with the tape strips. Use the supplied strips, do not substitute with duct tape (Fig. 6).

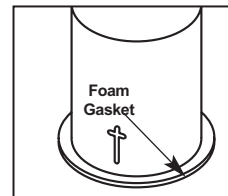


Figure 3

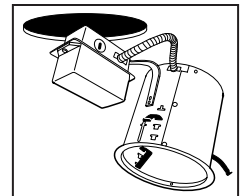


Figure 4

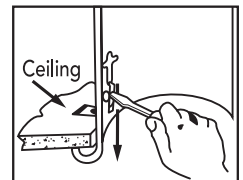
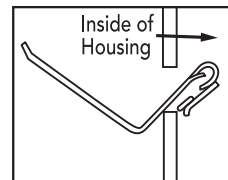


Figure 5

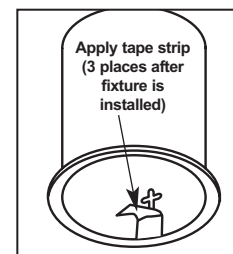


Figure 6

## JUNO TYPE IC20RLED & IC22RLED REMODEL RECESSED HOUSING

### ELECTRICAL CONNECTION INSTRUCTIONS

**Step 1.** Provide electrical service according to your local electrical code to the wiring box located on the remodel housing. Supply wire insulation must be rated for at least 90°C.

**Step 2.** Remove wiring box cover. Remove the appropriate knock-out(s) to accommodate the type of electrical service to be used/allowed by your local electrical code (Fig. 7):

**Metal Conduit.** Remove appropriate round knock-out(s) and connect conduit to wiring box with proper connectors (not supplied).

**Non-Metallic Cable.** When using non-metallic sheathed cable, use UL listed non-metallic cable fittings (2 provided.) Install fitting(s) into 1/2" trade size knock-out(s) in J-box. Insert cable into fitting, pushing it past the cable grip to secure. When more than two fitting(s) are needed, use additional UL listed non-metallic cable fittings (not supplied).

**Step 3.**  
**J-Box with Quick Connectors:** Strip supply wire 3/8", insert each supply wire into appropriate junction box connector. Connect black fixture wire to hot, white fixture wire to neutral and green fixture wire to ground.

**Step 4.** Place all wiring and connectors back in wiring box and replace cover.

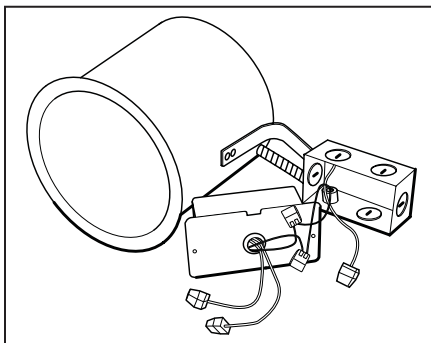


Figure 7

### WARRANTY

Juno Lighting Group warrants that its LED downlight products are free from defects in material and workmanship for three years from date of purchase. Juno Lighting Group's obligation is expressly limited to repair or replacement, without charge, at Juno Lighting Group's factory after prior written return authorization has been granted. This warranty shall not apply to products which have been altered or repaired outside of Juno Lighting Group's factory. This warranty is in lieu of all other warranties, expressed or implied, and without limiting the generality of the foregoing phrase, excludes any implied warranty of merchantability. Also, there are no warranties which extend beyond the description of the product on the company's literature setting forth terms of sale.

**Product Services Phone (888) 387-2212**

1300 South Wolf Road • Des Plaines, IL 60018 • Phone 800-323-5068 • [www.junolightinggroup.com](http://www.junolightinggroup.com)

### TRIM AND REFLECTOR INSTALLATION

After ceiling is finished and painted, remove paint shield from fixture. Discard or Recycle.

#### Open Trim Installation

**Step 1.** Install open trims using supplied coil springs or torsion springs. (Reference Figure 8 for coil spring installation).

**Step 2.** Locate the REFLECTOR that was packaged with the remodel housing and take note of the flange details at the top of the part. Install the REFLECTOR by aligning and inserting it into the fixture and rotating it 1/4 turn clockwise until it stops (Figure 9).

#### Lensed Trim Installation

**Step 1.** Locate the REFLECTOR that was packaged with the remodel housing and take note of the flange details at the top of the part. Install the REFLECTOR by aligning and inserting it into the fixture and rotating it 1/4 turn clockwise until it stops (Figure 9).

**Step 2.** If the lensed trim was supplied with an upper reflector, remove and discard or recycle it. Install the lensed trim using the supplied torsion springs.

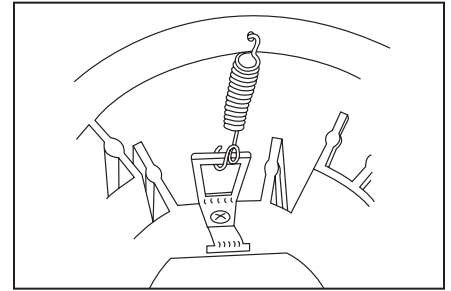


Figure 8

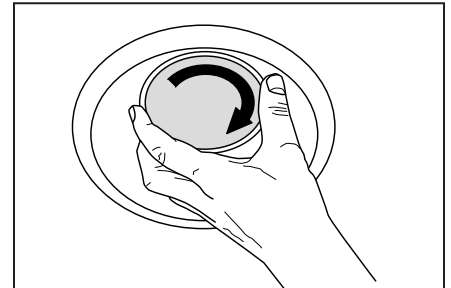


Figure 9



JUNO LIGHTING GROUP  
 by Schneider Electric