



Project: _____

Fixture Type: _____

Location: _____

Contact/Phone: _____

5" IC 900 LUMEN WARMDIM® LED DOWNLIGHT NEW CONSTRUCTION

IC920LWDG4 RECESSED HOUSING

LENSED TRIMS



PRODUCT DESCRIPTION

Dedicated LED, Air-Loc® sealed new construction housing with patented WarmDim® technology • LED color temperature warms while dimming to emulate the dimming performance of traditional incandescent light sources • Shallow housing allows for fit in 2 x 6 construction • Can be completely covered with insulation • Fully sealed housing stops infiltration and exfiltration of air, reducing heating and air cooling costs without the use of additional gaskets • LED housing is designed to provide 50,000 hours of life and is compatible with many standard Juno trims • 5 year limited warranty on LED components.

ENVIRONMENTALLY FRIENDLY, ENERGY EFFICIENT

- No harmful ultraviolet or infrared wavelengths
- No lead or mercury
- Comparable light output to 75W PAR30 incandescent

PRODUCT SPECIFICATIONS

LED Light Engine Proprietary patented micro processor controlled light engine emulates dimming performance of incandescent light source • Replaceable light engine integrated to thermally conductive housing provides uninterrupted heat transfer to ensure long life of the LEDs • 3000K color temperature at full lumen output • 90 CRI minimum throughout dimming range • Design covered under Patent US 8,710,754.

Optical System Computer-optimized reflector design with high reflectance white finish coupled with a high transmission diffusing lens conceals the LEDs and produces uniform aperture luminance • Wide flood distribution shipped as standard with optional optic accessory available and sold separately.

Aesthetic Trim Selections Compatible with wide selection of existing Juno trims • Shadow free, knife edge design blends seamlessly into ceiling • Trims are wet location approved for covered applications.

LED Driver Dedicated 120 volt driver • Power factor > 0.9 • Dimmable with the use of most incandescent, magnetic low voltage and electronic low voltage wall box dimmers • For a list of compatible dimmers, see [JUNOICLED-DIM](#) • Mounted between the j-box and housing for easy access and cool operation.

Life Rated for 50,000 hours at 70% lumen maintenance.

Labels UL listed for U.S. and Canada through-branch wiring, damp locations • Union made • UL and cUL.

Testing All reports are based on published industry procedures; field performance may differ from laboratory performance.

Product specifications subject to change without notice.

HOUSING FEATURES

Housing Designed for use in IC (insulated ceiling) or non-IC construction • Aluminum housing sealed for Air-Loc® compliance • Housing is vertically adjustable to accommodate up to a 2" ceiling thickness.

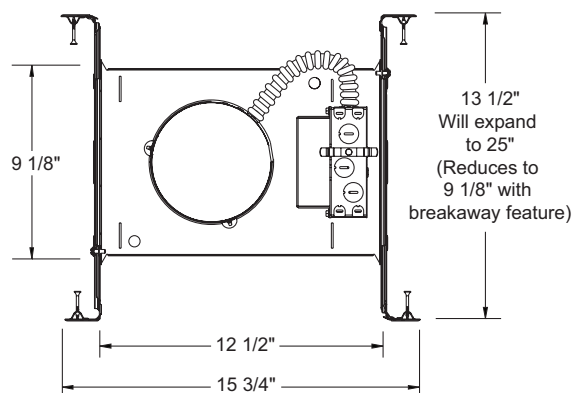
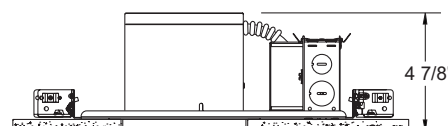
Junction Box Pre-wired junction box provided with (5) 1/2" and (1) 3/4" knockouts, (4) knockouts for 12/2 or 14/2 NM cable and ground wire • UL listed and cUL listed for through-branch wiring, maximum 8 #12 branch circuit conductors • Junction box provided with removable access plates • Knockouts equipped with pryout slots • Quick connect electrical connectors supplied as standard for fast, secure installation.

Mounting Frame 22-gauge die-formed galvanized steel mounting frame • Rough-in section (junction box, mounting frame, housing and bar hangers) fully assembled for ease of installation.

Real Nail 3 Bar Hangers Telescoping Real Nail 3® system permits quick placement of housing anywhere within 24" O.C. joists or suspended ceilings • Includes removable nail for repositioning of fixture in wood joist construction • Integral T-bar notch and clip for suspended ceilings • Design covered under Patent D552,969.



DIMENSIONS

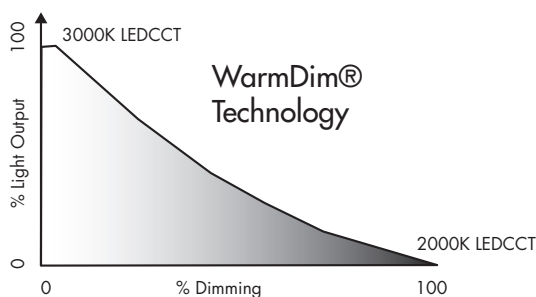


5 5/8" CEILING CUTOUT

ELECTRICAL DATA

Dedicated 120V Only Driver

| 120V | |
|-----------------------|--|
| Input Power | 18.1W (+/-5%) |
| Input Current | 0.15A |
| Frequency | 50/60 Hz |
| EMI/RFI | FCC Title 47 CFR, Part 15 Class B (residential) |
| Minimum starting temp | -25°C |



5" IC 900 LUMEN WARMDIM® LED DOWNLIGHT NEW CONSTRUCTION

IC920LWDG4 RECESSED HOUSING

LENSED TRIMS

ORDERING INFORMATION: Housing, trim and accessories each ordered separately.

Example: **IC920LWDG4-3K-1**





| Housing | Color Temperature | Input Voltage |
|------------|-------------------|--|
| IC920LWDG4 | 3K 3000K | 1 Dedicated 120V Only (Forward Phase + ELV dimmable) |

ACCESSORIES

| Catalog No. | Description |
|--------------|--------------------------|
| LEDOPTICG3-M | Medium Flood Optic (50°) |

To order, specify catalog number.

Example: **2130W-WH**

| Trim/Description |
|--|
|  210N-WH' * 210N-SC' * 210N-ABZ' * Flat Glass Shower Trim |
|  212N-WH' * 212N-SC' * 212N-ABZ' * Frosted Lens with Clear Center |
|  2130W-WH' * 2130B-WH' * White Baffle Regressed Frosted Dome Lens with Reflector Black Baffle Regressed Frosted Dome Lens with Reflector |
|  5101-ABZ' * 5101-SC' * 5101-WH' * Beveled Frame - Frosted Dome Lens with Reflector |


UL Listed for use in wet location.

* Do not use reflector shipped with trim for LED housing.

Trim Size: 210, 212, 2130 - 6¼" O.D.; 5101 - 6½" O.D.

Trim Finish: ABZ - Classic Aged Bronze, SC - Satin Chrome, WH - White

Note: In Canada when insulation is present, Type IC fixtures must be used.

 JUNO IC housings meet IECC Energy Code requirements per ASTM E283.

Air-Loc® rated trims are pre-gasketed for minimum air leakage with IC housings.

PHOTOMETRIC REPORT

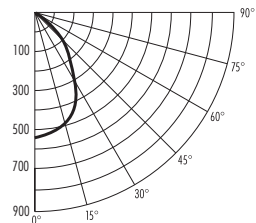
Test Report #: PT05140101

Catalog No: IC920LWDG4-3K

with 210-WH Trim and
Standard Wide Flood Optic

Luminaire Spacing Criterion: 0.98

Luminaire LPW: 40



CANDLEPOWER DISTRIBUTION (Candelas)

| Degrees Vertical | 0° |
|------------------|-----|
| 0 | 538 |
| 5 | 533 |
| 15 | 491 |
| 25 | 387 |
| 35 | 226 |
| 45 | 112 |
| 55 | 61 |
| 65 | 35 |
| 75 | 18 |
| 85 | 6 |
| 90 | 0 |

AVERAGE INITIAL FOOTCANDLES

Multiple Units (Square Array, 60'x60' room)

Ceiling 80% Wall 50% Floor 20%

| Spacing | RCR1 | RCR3 | RCR5 |
|---------|------|------|------|
| 4.0' | 48 | 39 | 33 |
| 5.0' | 31 | 25 | 21 |
| 6.0' | 21 | 18 | 15 |
| 7.0' | 17 | 14 | 12 |
| 8.0' | 14 | 11 | 9 |
| 9.0' | 10 | 9 | 7 |
| 10.0' | 8 | 6 | 5 |

ZONAL LUMEN SUMMARY

| Zone | Lumens | %Lamp | %Fixture |
|-------|--------|-------|----------|
| 0-30° | 363 | N/A | 51.3 |
| 0-40° | 505 | N/A | 71.3 |
| 0-60° | 649 | N/A | 91.5 |
| 0-90° | 709 | N/A | 100.0 |

INITIAL FOOTCANDLES (One Unit, 17.8W, 64.7° Beam)

| Distance to Illuminated Plane (Feet) | Footcandles Beam Center | Beam Diameter |
|--------------------------------------|-------------------------|---------------|
| 4 | 33.6 | 5.1' |
| 6 | 14.9 | 7.6' |
| 8 | 8.4 | 10.1' |
| 10 | 5.4 | 12.7' |

LUMINANCE (Average cd/m²)

| Degrees | Average Luminance |
|---------|-------------------|
| 45 | 18727 |
| 55 | 12617 |
| 65 | 9725 |
| 75 | 8192 |
| 85 | 7610 |

Fixtures tested to IES recommended standard for solid state lighting per LM-79-08. Photometric performance on a single unit represents a baseline of performance for the fixture. Results may vary in the field.



1300 S. Wolf Road • Des Plaines, IL 60018 • Phone (847) 827-9880 • Fax (847) 827-2925
 220 Chrysler Drive • Brampton, Ontario • Canada L6S 6B6 • Phone (905) 792-7335 • Fax (905) 792-0064
 Visit us at www.junolightinggroup.com

Printed in U.S.A. ©2014 Juno Lighting, LLC.