

# GEOPAK Series 2

SIZE 2 - TRP2/QSP2/RD12

## FEATURES

- Mid sized architectural wallpacks in three stylish shapes
- Capable of replacing up to 400w HID luminaires
- Type I, II, III and IV distributions for a wide variety of applications
- Integral battery backup options
- Control capabilities offer additional energy savings options
- Zero uplight distributions
- Inverted mounting capable for under canopy and facade lighting



## RELATED PRODUCTS

- [RD11 GeoPak](#)
[TRP1 GeoPak](#)
[QSP1 GeoPak](#)



## CONTROL TECHNOLOGY



## SPECIFICATIONS

### CONSTRUCTION

- Die-cast aluminum housing and door
- Seven powder coat standard finishes, plus custom color options

### OPTICS

- 24 or 32 high power LEDs deliver up to 10,800 lumens
- Up to 146 lumens per watt
- Different lenses offer a variety of distribution patterns - Type I, II, III and IV (Forward throw)
- 3000K - 70 CRI, 4000K - 70 CRI and 5000K - 70 CRI, CCT nominal

### INSTALLATION

- Quick-mount adapter with gasket seal provides easy installation to wall or to recessed junction box (4" square junction box). Fixture attaches by two Allen-head hidden fasteners for tamper resistance
- Black box accessory available for surface conduit application

### ELECTRICAL

- Optional Dual Drivers & Dual Power Feeds for 50, 70 and 90 watt versions
- 120-277, 347 and 480 voltage, 50/60Hz
- Power factor  $\geq 90\%$
- THD (Total Harmonic Distortion)  $<20\%$

### ELECTRICAL (CONTINUED)

- Ambient operating temperature  $-40^{\circ}\text{C}$  to  $40^{\circ}\text{C}$
- 20kA surge protection (series); Automatically takes fixture off-line when device is consumed
- Integral Battery Backup provides emergency lighting for the required 90 minute path of egress
- Includes a long-life Lithium Iron Phosphate battery with optional battery heater for cold temperature application
- Utilizes 4 LEDs in emergency mode with 657 lumens. Each of the 4 LEDs in emergency are designed to function independently in the unlikely event of a single LED malfunction
- Spectron® self-testing/self-diagnostic electronics are included standard
- Independent dedicated driver and LED array for battery/emergency mode operation

### CONTROLS

- Drivers are 0-10V dimming standard
- Universal button photocontrol for dusk to dawn energy savings
- Photocell and occupancy sensor options available for complete on/off and dimming control

### CONTROLS (CONTINUED)

- In addition, GeoPak Size 2 can be specified with SiteSync™ wireless control system for reduction in energy and maintenance cost while optimizing light quality 24/7. See ordering information or visit [www.hubbellighting.com/sitesync](http://www.hubbellighting.com/sitesync) for more details

### CERTIFICATIONS

- IP65 rated housing
- DesignLights Consortium® (DLC) qualified. Please refer to the DLC website for specific product qualifications at [www.designlights.org](http://www.designlights.org)
- Zero uplight (U0), dark sky, neighbor friendly
- Drivers IP66 and RoHS compliant

### WARRANTY

- 5 year limited warranty
- See [HLI Standard Warranty](#) for additional information

KEY DATA	
Lumen Range	3,200-11,000
Wattage Range	28-87
Efficacy Range (LPW)	112-146
Fixture Projected Life (Hours)	L70>60K
Weights lbs. (kg)	16-18 (7.3-8.2)

# GEOPAK Series 2

SIZE 2 - TRP2/QSP2/RD12

## ORDERING GUIDE

Example: TRP2-24L30-3K7-2-UNV-DBT

CATALOG #

## ORDERING INFORMATION

Series	# LEDs - Wattage	CCT/CRI	Distribution	Voltage	Secondary Mounting
TRP2 Trapezoid	24L-30 24 LEDs, 30 watts	3K7 3000K, 70 CRI	1 TYPE I	UNV 120-277V	BLANK Downlight Only
RD12 Radius	24L-50 24 LEDs, 50 watts	3K8 3000K, 80 CRI	2 TYPE II	120 120V	
QSP2 Qtr-sphere	24L-70 24 LEDs, 70 watts	4K7 4000K, 70 CRI	3 TYPE III	208 208V	
	24L-90 24 LEDs, 90 watts	4K8 4000K, 80 CRI	4 TYPE IV	240 240V	
	32L-70 32 LEDs, 70 watts	5K7 5000K, 70 CRI		277 277V	
	32L-90 32 LEDs, 90 watts			UHV <sup>1</sup> 347/480V	
				347 <sup>1</sup> 347V	
				480 <sup>1</sup> 480V	

Color	Control Options Network	Options
BLT Black Matte Textured	PC Button Photocontrol	SF <sup>2</sup> Single fuse & fuse holder
BLS Black Gloss Smooth	SCP <sup>3,4</sup> Programmable occupancy sensor, factory default is 10% light output	DF <sup>2</sup> Double fuse & fuse holder
DBT Dark Bronze Matte Textured	SCO <sup>3</sup> Sensor Control, On/Off	E <sup>2,6</sup> Battery pack (0°C)
DBS Dark Brone Gloss Smooth	Spec SCP/SCO & SWPM Mount Height	EH <sup>2,6</sup> Battery pack (-30°C) with heater
GTT Graphite Matte Textured	-8F Up to 8ft mount height	2DR <sup>5</sup> Dual Drivers
LGS Light Grey Gloss Smooth	-20F Up to 20ft mount height	2PF <sup>5,6</sup> Dual power feeds
PSS Platinum Silver Smooth		CS Comfort shield
WHT White Matte Textured		
WHS White Gloss Smooth		
VGt Verde Green Textured		
Color Option		
CC Custom Color		

### Notes:

- 1 70 & 90 watt versions only
- 2 Must specify voltage (120, 277 or 347V only for SWP & SWP, 120 or 277V only for E & EH)
- 3 PCU option not applicable, included in sensor
- 4 Must order minimum of one remote control to program dimming settings, 0-10V fully adjustabl dimming with automatic daylight calibration and different time delay settings
- 5 Not available with 30w version
- 6 Battery option not compatible with 2 power feeds

## ACCESSORIES (ORDERED SEPARATELY)

Catalog Number	Description
<input type="checkbox"/> SCP-REMOTE*	Remote control for SCP option. Order at least one per
<input type="checkbox"/> BB-GEO-XX	Black box with 4-1/2" threaded conduit holes, specify finish by replacing "XX" with finish selection, eg. Dark Bronze "DB"
<input type="checkbox"/> SWUSB**	SiteSync loaded on USB flash drive (Windows based only)
<input type="checkbox"/> SWTAB**	SiteSync Windows Tablet
<input type="checkbox"/> SWBRG+	SiteSync Wireless Bridge Node

### Notes:

- \* Must order minimum of one remote control to program dimming settings, 0-10V fully adjustable dimming with automatic daylight calibration and different time delay settings.
- \*\* When ordering with SiteSync, one of the following interface options must be chosen an ordered separately. Each option contains the SiteSync License, GUI and Bridge Node.
- + If needed, an additional Bridge Node can be ordered

# GEOPAK Series 2

SIZE 2 - TRP2/QSP2/RD12

## INPUT POWER CONSUMPTION

# of LEDs	Drive Current (mA)	Input Voltage (V)	Current (Amps)	System Power (w)
24	350mA	120	0.23	28
		277	0.10	28
	625mA	120	0.41	49
		277	0.18	49
	900mA	120	0.59	71
		277	0.25	71
		347	0.20	71
		480	0.15	71
	70	120	0.72	87
		277	0.31	87
		347	0.25	87
		480	0.18	87
32	110	120	0.56	67
		277	0.24	67
		347	0.19	67
		480	0.14	67
	140	120	0.69	83
		277	0.30	83
		347	0.24	83
		480	0.17	83

# GEOPAK Series 2

SIZE 2 - TRP2/QSP2/RD12

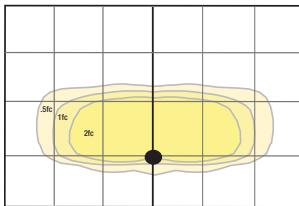
## PERFORMANCE DATA

Description	Nominal Wattage	System Watts	Dist. Type	5K (5000K NOMINAL 70 CRI)					4K (4000K NOMINAL 70 CRI)					3K (3000K NOMINAL 80 CRI)				
				Lumens	LPW	B	U	G	Lumens	LPW	B	U	G	Lumens	LPW	B	U	G
24	350mA	28	1	4,075	146	1	0	0	4,065	146	1	0	0	3,660	131	0	0	0
			2	3,747	134	1	0	1	3,738	134	1	0	1	3,366	121	1	0	1
			3	3,756	135	1	0	1	3,747	134	1	0	1	3,374	121	1	0	1
			4	3,656	131	0	0	1	3,647	131	0	0	1	3,284	118	0	0	1
	625mA	49	1	6,329	130	1	0	0	6,313	130	1	0	0	5,685	117	1	0	0
			2	5,820	120	1	0	1	5,806	119	1	0	1	5,228	108	1	0	1
			3	5,833	120	1	0	2	5,819	120	1	0	2	5,240	108	1	0	2
			4	5,678	117	1	0	2	5,664	117	1	0	2	5,100	105	1	0	2
	900mA	71	1	8,613	122	1	0	1	8,592	122	1	0	1	7,737	110	1	0	1
			2	7,921	112	1	0	2	7,902	112	1	0	2	7,115	101	1	0	2
			3	7,939	112	1	0	2	7,920	112	1	0	2	7,131	101	1	0	2
			4	7,728	109	1	0	2	7,709	109	1	0	2	6,942	98	1	0	2
	1100mA	87	1	10,791	124	1	0	1	10,765	124	1	0	1	9,694	112	1	0	1
			2	9,924	114	2	0	2	9,900	114	1	0	2	8,915	103	1	0	2
			3	9,946	115	1	0	2	9,922	114	1	0	2	8,935	103	1	0	2
			4	9,682	112	1	0	2	9,659	111	1	0	2	8,696	100	1	0	2
32	650mA	67	1	8,621	129	1	0	1	8,600	128	1	0	1	7,744	116	1	0	1
			2	7,928	118	1	0	2	7,909	118	1	0	2	7,122	106	1	0	2
			3	7,946	119	1	0	2	7,927	118	1	0	2	7,137	107	1	0	2
			4	7,735	115	1	0	2	7,716	115	1	0	2	6,948	104	1	0	2
	850mA	83	1	10,806	130	1	0	1	10,780	130	1	0	1	9,705	117	1	0	1
			2	9,938	120	2	0	2	9,914	119	1	0	2	8,927	108	1	0	2
			3	9,960	120	1	0	2	9,936	120	1	0	2	8,947	108	1	0	2
			4	9,695	117	1	0	2	9,672	117	1	0	2	8,709	105	1	0	2

## PHOTOMETRY

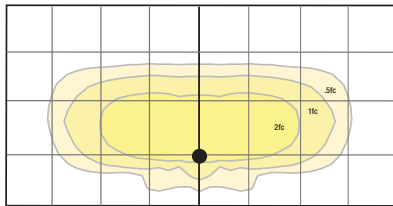
The following diagrams represent the general distribution options offered for this product. For detailed information on specific product configurations, see [website photometric test reports](#).

TRP2-24L-50-4K7-1



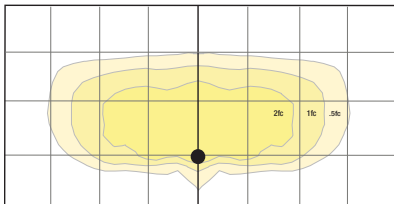
Mounting Height: 15'

TRP2-24L-50-4K7-2



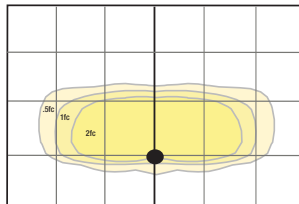
Mounting Height: 15'

TRP2-24L-50-4K7-3



Mounting Height: 15'

TRP2-24L-50-4K7-4

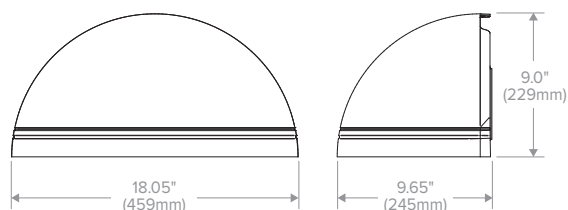


Mounting Height: 15'

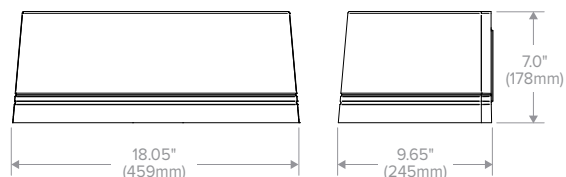
# GEOPAK Series 2

SIZE 2 - TRP2/QSP2/RDI2

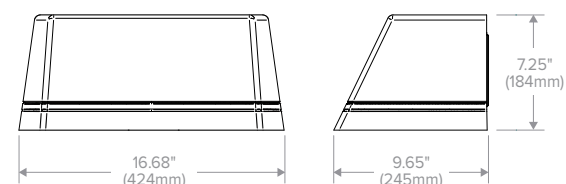
## DIMENSIONS



QSP2  
Weight:  
15 lbs (6.8 kg)



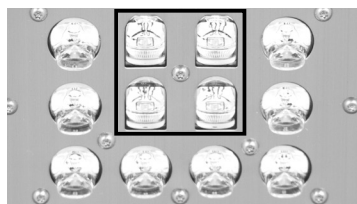
RD12  
Weight:  
16 lbs (7.3 kg)



TRP2  
Weight:  
16 lbs (7.3 kg)

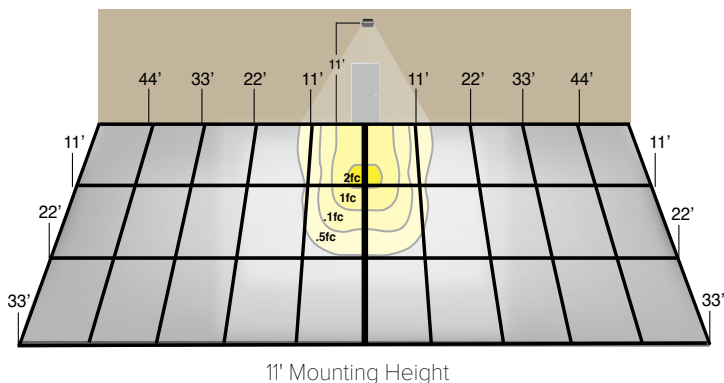
**ADDITIONAL INFORMATION (CONT'D)**

## E & EH EMERGENCY BATTERY BACKUP



24 or 32 high power LEDs generate up to 11,000 lumens in normal mode and use 4 LEDs for up to 700 lumens in emergency mode.

## PHOTOMETRICS - BATTERY BACK UP



Provides Life Safety Code average illuminance of 1.0 fc. Assumes open space with no obstructions and mounting height of 11'.

Diagrams for illustration purposes only, please consult factory for application layout.

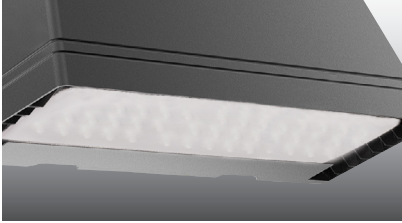
Battery backup units consume 6 watts when charging a dead battery and 2 watts during maintenance charging. EH (units with a heater) consume up to an additional 8 watts when charging if the battery temp is lower than 10°C

# GEOPAK Series 2

SIZE 2 - TRP2/QSP2/RD12

## ADDITIONAL INFORMATION (CONT'D)

### COMFORT SHIELD



Comfort shield option utilizes a frosted acrylic lens that softens output and improves uniformity. Available from the factory or as an accessory for field installation.

### CONTROL OPTIONS



Programmable occupancy sensor offers greater control and energy savings with adjustable delay and dimming levels (Factory default is 10%)

## USE OF TRADEMARKS AND TRADE NAMES

All product and company names, logos and product identifies are trademarks ™ or registered trademarks ® of Hubbell Lighting, Inc. or their respective owners. Use of them does not necessarily imply any affiliation with or endorsement by such respective owners.