

## DESCRIPTION

A series of understated, balanced luminaires that come in a variety of lamp types. The Stasis family features die-cast and extruded bodies with elegant free-flowing lines. Ideal for accent and display lighting applications. This Stasis LED is perfect for those applications where performance is required from a discrete source.

Catalog #		Type
Project		
Comments		Date
Prepared by		

## DESIGN FEATURES

### Quick-Lock Adapter\*

Attaches electrically and mechanically anywhere along track. Includes discrete locking tab that locks luminaire on track and allows for easy removal and repositioning.

### Lockable Aiming

Luminaire tilt and rotation can be locked in place easily with a 0.5mm allen wrench (included).

### Switch

On/off switch allows power to be turned off during lamp replacement on individual luminaires.

### Driver Housing

Die-cast and extruded aluminum housing incorporates the lamp control circuit.

### Heat Sink

Aluminum die-cast heat sink provides exceptional thermal management to yield 70% lumen maintenance after 50,000 hours of operation.

### Luminaire Arm

Arm allows the lamp housing tilt to adjust +/-90°. It also pivots +/-90° around the ballast housing. This enables the ballast housing to remain static on the track creating a clean look, while providing full aiming capabilities. The arm employs graduations every 15° for precise and repeatable tilt aiming. Indicator mark on the bottom ensures perfect luminaire housing alignment with track.

### LED Light Engine

Equipped with (3) 3-Watt white LEDs. Factory configurable optics allow for 3 optical distributions. High CRI of 90 with excellent color consistency of +/- 50 K color temperature.

### Dimming

The Stasis LED SML is dimmable to 15% with electronic low voltage equipment (ELV dimmers need a neutral connection in the wall box). Recommended ELV Dimmers:

#### LUTRON:

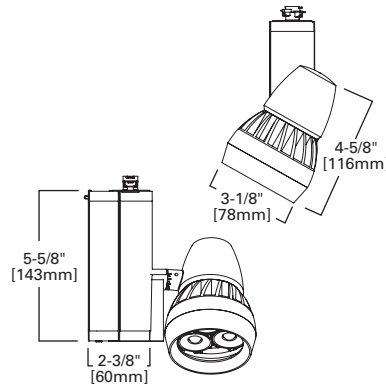
- Diva: DVELV Series
- Maestro: MAELV Series
- Nova: NTELV Series
- Skylark: SELV Series

#### LEVITRON:

- Acenti: ACE Series
- Illumatech: IPE Series

### Labels

UL/cUL listed for use with Halo Architectural Power-Trac and Lazer Track. UL/cUL classified for Juno [See Footnote #1 in Ordering Information below], Lightolier [See Footnote #2 below], and Global [See Footnote #3 below] TEK/HTEK Track



## L805SML Stasis

8W  
Small



3000 K	CBCP
Spot 9°	14627
Wide Spot 15°	5238
Narrow Flood 25°	1186
Flood 40°	1044
4000K Multiplier = 1.25	

### Lighting Data 3000K Spot

Lumens:	436
Lumens per watt:	55.2
Watts at 120VAC	7.88

### Energy Data:

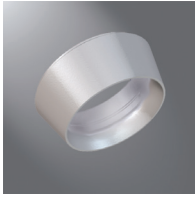
Input Power: 8W
Power Factor: >0.92
Input Current: 0.15 Amps

## ORDERING INFORMATION

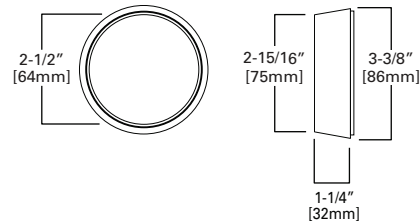
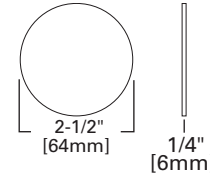
SAMPLE NUMBER: L805SMLNF930AH

Track	Stasis LED	Size	Beam	CRI & CCT	Finish	Voltage
L=Halo Power-Trac LA=Halo Architectural Track LF=Flexible Track	L2G=Global® TEK or HTEK <sup>3</sup> LJ=Juno® Track <sup>1</sup> LL=Lightolier® Track <sup>2</sup>	805=805	SML=Small, 8W	FL=Flood 40° NF=Narrow Flood 25° SP=Spot 9° WS=Wide Spot 15°	927=90CRI, 2700 K 930=90CRI, 3000 K 840=80CRI, 4000 K	AH=Aluminum Haze MB=Black P=White
						[Blank]=120V 277=277V (Only with LA or HTEK)

NOTES: 1. Juno® T single circuit and 2-circuit track contact. Juno® is a registered trademark of Juno® Lighting. 2. Lightolier® Lyfespan 6000 single circuit and 2 circuit track contact. Lightolier® is a registered trademark of Philips Lighting. 3. Global® is a registered trademark of Nordic Aluminum.

**LM10520 Media Holder**

Accepts up to 2 pieces of media.

**Color Filters****F22-20** = Red Gel**F76-20** = Red Dichoric**F72-20** = Amber Dichoric**F75-20** = Yellow Dichoric**F73-20** = Green Dichoric**F71-20** = Peach Dichoric**F74-20** = Medium Blue Dichoric**F77-20** = Dark Blue Dichoric**F78-20** = Light Blue Dichoric**F79-20** = Neutral Density**F80-20** = Magenta**F55-20** = Yellow Gel**F33-20** = Medium Blue**F44-20** = Medium Green**F66-20** = Mercury**DIF-20** = Solite**PHOTOMETRICS**Color Temp = 3000 K  
4000K Multiplier = 1.25**0 deg Aiming Angle**  
Horizontal Footcandles on Floor**30 deg Aiming Angle**  
Horizontal Footcandles on Floor**30 deg Aiming Angle**  
Vertical Footcandles on Wall**60 deg Aiming Angle**  
Vertical Footcandles on Wall

	D	FC	L	W	S	D	FC	L	W	S	CB	D	FC	L	W	S	CB	D	FC	L	W	S	CB
Spot: 9°	5	585	0.8	0.8	1	5	380	1.1	0.9	1	2.9	3	223	1.8	0.9	1.2	5.2	3	1056	0.7	0.5	0.6	1.7
CBCP: 14627	7.5	260	1.1	1.1	1.5	7.5	169	1.7	1.4	1.5	4.3	4	126	2.4	1.3	1.6	6.9	4	594	0.9	0.7	0.8	2.3
Lumens: 436	10	146	1.5	1.5	2	10	95	2.3	1.8	2	5.8	5	80	3	1.6	2	8.7	5	380	1.1	0.9	1	2.9
LpW: 55.2	12.5	94	1.9	1.9	2.5	12.5	61	2.8	2.3	2.5	7.2	6	56	3.6	1.9	2.4	10.4	6	264	1.4	1.1	1.2	3.5
	15	65	2.3	2.3	3	15	42	3.4	2.7	3	8.7												

	D	FC	L	W	S	D	FC	L	W	S	CB	D	FC	L	W	S	CB	D	FC	L	W	S	CB
Wide Spot: 15°	5	210	1.4	1.4	1.5	5	136	1.8	1.6	2	2.9	3	84	2.6	1.5	2.1	5.2	3	378	1.1	0.9	1.2	1.7
CBCP: 5238	7.5	93	2.1	2.1	2.3	7.5	60	2.7	2.4	3	4.3	4	47	3.5	2	2.8	6.9	4	213	1.4	1.3	1.6	2.3
Lumens: 449	10	52	2.8	2.8	3	10	34	3.6	3.2	4	5.8	5	30	4.4	2.5	3.5	8.7	5	136	1.8	1.6	2	2.9
LpW: 56.8	12.5	34	3.5	3.5	3.8	12.5	22	4.5	3.9	5	7.2	6	21	5.3	3.1	4.2	10.4	6	95	2.2	1.9	2.4	3.5
	15	23	4.2	4.2	4.5	15	15	5.4	4.7	6	8.7												

	D	FC	L	W	S	D	FC	L	W	S	CB	D	FC	L	W	S	CB	D	FC	L	W	S	CB
Narrow Flood: 25°	5	47	2.6	2.6	3.5	5	33	3.2	2.9	4	2.9	3	26	3.5	2.5	3.6	5.2	3	90	1.9	1.7	2.4	1.7
CBCP: 1186	7.5	21	3.9	3.9	5.3	7.5	14	4.8	4.4	6	4.3	4	15	4.7	3.4	4.8	6.9	4	51	2.6	2.3	3.2	2.3
Lumens: 384	10	12	5.2	5.2	7	10	8	6.4	5.8	8	5.8	5	9	5.8	4.2	6	8.7	5	33	3.2	2.9	4	2.9
LpW: 46.3	12.5	8	6.5	6.5	8.8	12.5	5	8	7.3	10	7.2	6	6	7	5.1	7.2	10.4	6	23	3.8	3.5	4.8	3.5
	15	5	7.8	7.8	10.5	15	4	9.6	8.7	12	8.7												

	D	FC	L	W	S	D	FC	L	W	S	CB	D	FC	L	W	S	CB	D	FC	L	W	S	CB
Flood: 40°	5	42	2.9	2.9	4	5	29	3.5	3.3	4.5	2.9	3	25	3.5	2.8	3.9	5.2	3	80	2.1	2	2.7	1.7
CBCP: 1044	7.5	19	4.4	4.4	6	7.5	13	5.2	5	6.8	4.3	4	14	4.6	3.7	5.2	6.9	4	45	2.8	2.6	3.6	2.3
Lumens: 391	10	10	5.8	5.8	8	10	7	7	6.6	9	5.8	5	9	5.8	4.6	6.5	8.7	5	29	3.5	3.3	4.5	2.9
LpW: 49.5	12.5	7	7.3	7.3	10	12.5	5	8.7	8.3	11.3	7.2	6	6	6.9	5.5	7.8	10.4	6	20	4.2	4	5.4	3.5
	15	5	8.8	8.8	12	15	3	10.5	9.9	13.5	8.7												

**Notes and Definitions:**

Beam spread is to 50% center beam candlepower (CBCP.)

D=Distance in feet to floor or wall.

FC=Footcandles on floor or wall at center beam aiming location.

L=Effective Visual Beam length in feet (50% of maximum footcandle level.)

W=Effective Visual Beam width in feet (50% of maximum footcandle level.)

CB=Distance in feet across or down to center beam location.

