

**Description**

The Halo E5 series consists of compact and efficient recessed housings optimized and listed for PAR20 and PAR30, EISA compliant, tungsten-halogen, CFL and LED lamps, as well as incandescent. The Halo E5 remodel housing is for use in non-insulated ceilings, suitable for residential or light commercial applications; with airtight code compliant construction. Use with a variety of trims and finishes to create different lighting effects or to match any decor. This remodel housing is designed for installation from below the finished ceiling. As E5RTAT is for use in non-insulated ceilings, if insulation is present it must be kept 3" from all sides of the housing. May be retrofit with HALO LED lighting systems.

Catalog #		Type
Project		
Comments		Date
Prepared by		

**Specification Features**

**Housing**

- Single wall die-formed housing
- Housing features a precision rolled interlocking collar which maintains aperture geometry for greater assurance of installation results
- Integral Air-Tite gasket for code-required gasket between fixture and finished ceiling - seals aperture without need for additional caulk
- Shipped with socket overspray protector installed
- For installation from below the finished ceiling. Integral flange secures fixture against ceiling

**Remodel Retention System - Speed Clamps**

- Exclusive two integral speed clamps securely lock housing to ceiling, accommodating 3/8" to 2" ceiling materials
- Use screwdriver or power driver to set clamps

**Socket Plate**

- Rigid socket plate adjusts and locks without tools for various lamp sizes.
- Socket plate and bracket may be removed when using socket supporting trims

**Includes:**

**Remodel Speed Clamps**

- (2) Exclusive integral speed clamps
- Speed clamp tabs securely lock to ceiling
- Speed clamps can be loosened for easy repositioning
- Speed clamps feature internal drive screws – a power screwdriver speeds installation
- Two-tier tabs adjust for 3/8" to 2" of various ceiling materials

**Attached-Arm Design**

- Attached arm gets into tight spaces
- Ease of installing through the ceiling aperture
- Smaller footprint for packing and distributor shelf space

**Hinged junction box w/ Slide-N-Side™**

- (4) 1/2" conduit pry-outs
- (2) Slide-N-Side™ Non-Metallic (NM) wire traps, allow wiring outside the box
- For 14-2, 14-3, 2-2, 12-3 U.S. and 14-2, 14-3, 12-2 Canadian
- Hinged door for easy access

**Quick Connect™ Wiring Tray**

- (3) Color coded push wire nuts in captive tray for one-handed connection
- Aids in speed & reliability
- Clear caps for wire connection visibility

**cULus Listed**

- Compact 10 in³ box volume
- Listed for maximum (6) No. 12 AWG or (8) No. 14 AWG 90° C splice conductors in box

**Remodel Flange**

- Die formed flange maintains precise whole circumference
- Integral flange secures fixture against the ceiling

**Air-Tite™ code compliant**

- Certified under ASTM E283
- Exclusive gasket seals aperture, frame & ceiling
- No additional caulk required

**Socket**

- Porcelain socket with nickel plated brass screw shell
- Socket snaps into socket plate for consistent lamp positioning

**Thermal Protector**

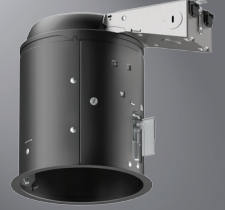
- Self resetting thermal protector deactivates fixture if overheating occurs due to improper lamping or misapplied insulation

**Trims**

- Halo Fit-All concept offers multiple trim options in a variety of design styles, and functional beam distributions to control beam angle and lumen delivery in accommodating various lamp types including Halogen, CFL and LED

**Compliance**

- cULus Listed 1598 Luminaire
- cULus Listed Damp Location
- cULus Listed for Wet Location, covered ceiling, with select trims
- Air-Tite code compliant. Certified under ASTM E283; not exceeding 2.0 cfm (0.944 L/s) air leakage rate tested at a 1.57 psf (75 Pa) pressure differential
- RoHS compliant



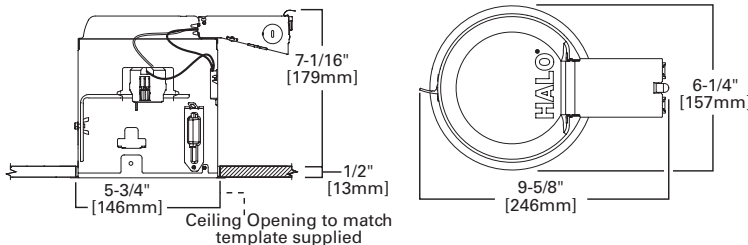
**E5RTAT**

**5" Non-IC, Air-Tite, Remodel Housing**

**E26 Screw base housing**



**Dimensions**



**Special Features**

- Hinged J-Box with Slide-N-Side™
- Quick Connect™ push wire nuts
- Air-Tite™ code compliant

## Ordering Information

Sample Number: E5RTAT 5110WB  
Order housing, trim and lamp (by others) separately for a complete luminaire.

### Housing

E5RTAT = 5" non-insulated ceiling, airtight recessed housing, remodel, 120V

### Trims

#### Reflectors



**5020 PAR Reflector**  
OD: 6-3/8" [162mm]  
5020P=White Reflector and Trim  
5020H=Haze Reflector, White Trim  
5020SC=Clear Specular Reflector, White Trim  
5020BL=Black Specular Reflector, White Trim  
5020SN=Satin Nickel Reflector and Trim  
5020TBZ=Tuscan Bronze Reflector and Trim



**5021 Full Reflector**  
OD: 6-3/8" [162mm]  
5021H=Haze Reflector, White Trim  
5021SC=Specular Clear Reflector, White Trim  
5021SN=Satin Nickel Reflector and Trim  
5021TBZ=Tuscan Bronze Reflector and Trim



**5107 Specular Reflector, Self-flange**  
OD: 6-5/8" [168mm]  
5107SC=Specular Reflector, White Trim

#### Baffles



**5001 PAR Metal Baffle Splay**  
OD: 6-3/8" [162mm]  
5001P=White Baffle and Trim  
5001MB=Black Baffle, White Trim  
5001SN=Satin Nickel Baffle and Trim  
5001TBZ=Tuscan Bronze Baffle and Trim



**5010 PAR Metal Step Baffle**  
OD: 6-3/8" [162mm]  
5010W=White Baffle and Trim  
5010=Black Baffle, White Trim



**5012 High Coilex® Baffle**  
OD: 6-3/8" [162mm]  
5012W=White Baffle and Trim  
5012P=Black Baffle, White Trim



**5016 Coilex® Baffle with Reflector and Torsion Springs**  
OD: 6-3/8" [162mm]  
5016W=White Baffle and Trim  
5016P=Black Baffle, White Trim



**5102 Tapered Metal Baffle, Self-flange**  
OD: 6-3/8" [162mm]  
5102WB=White Baffle and Trim  
5102BB=Black Baffle, White Trim



**5109 Coilex® Tapered Baffle, Self-flange**  
OD: 6-3/8" [162mm]  
5109WB=White Plastic Straight Coilex Baffle and Trim  
5109BB=Black Plastic Straight Coilex Baffle, White Trim  
5109BKBB=Black Plastic Straight Coilex Baffle and Trim



**5110 Perftex Baffle, Self-flange**  
OD: 6-3/4" [172mm]  
5110WB=White Perftex Baffle and Trim  
5110BB=Black Perftex Baffle, White Trim  
5110BKBB=Black Perftex Baffle and Trim



**5125 Air-Tite Full Cone Baffle, Self-flange**  
OD: 6-3/4" [172mm]  
5125WB=White Baffle and Trim  
5125BB=Black Baffle, White Trim

#### Adjustable - Eyeballs & Gimbals



**5060 PAR30 Adjustable Gimbal 20° Tilt, Self-flange**  
OD: 6-3/8" [162mm]  
5060P=White Gimbal and Trim



**5070 PAR30 Adjustable Eyeball 30° Tilt, Self-flange**  
OD: 6-3/4" [172mm]  
5070P=White Eyeball and Trim  
5070SN=Satin Nickel Eyeball and Trim  
5070TBZ=Tuscan Bronze Eyeball and Trim



**5071 PAR20 Adjustable Eyeball 30° Tilt, Self-flange**  
OD: 6-3/8" [162mm]  
5071P=White Eyeball and Trim



**5130 PAR30 Eyeball 35° Tilt, Self-flange**  
OD: 6-3/8" [162mm]  
5130WH=White Eyeball and Trim



**5135 PAR20 Eyeball 35° Tilt, Self-flange**  
OD: 6-3/8" [162mm]  
5135WH=White Eyeball and Trim



**5165 PAR30 Gimbal 25° Tilt, Self-flange**  
OD: 6-3/4" [172mm]  
5165WH=White Gimbal and Trim  
5165BK=Black Gimbal and Trim  
5165SN=Satin Nickel Gimbal and Trim  
5165TBZ=Tuscan Bronze Gimbal and Trim



**5222 Regressed PAR30 Adjustable, 35° Tilt, Self-flange**  
OD: 6-3/4" [172mm]  
5222WB=White Baffle and Trim  
5222BB=Black Baffle, White Trim  
5222SC=Specular Clear Reflector, White Trim  
5222H=Haze Reflector, White Trim

#### Lenses & Wet Location Showerlights



**5051 Frosted Lens - Showerlight**  
OD: 6-3/8" [162mm]  
5051PS=Frosted Glass Lens, White Trim



**5054 Air-Tite Frosted Dome Lens - Showerlight**  
OD: 6-3/8" [162mm]  
5054PS=Frosted Glass Dome, White Trim  
5054SNS=Frosted Glass Dome, Satin Nickel Trim  
5054TBZS=Frosted Glass Dome, Tuscan Bronze Trim



**5145 Open Wet Location, Shallow Reflector, Self-flange - Showerlight\***  
OD: 6-3/4" [172mm]  
5145WH=White Trim  
5145SN=Satin Nickel Trim  
5145TBZ=Tuscan Bronze Trim



**5146 Open Wet Location, Full Reflector, Self-flange - Showerlight\***  
OD: 6-3/4" [172mm]  
5146WH=White Trim  
5146SN=Satin Nickel Trim  
5146TBZ=Tuscan Bronze Trim



**5150 Frost Dome Glass Lens, Self-flange - Showerlight**  
OD: 6-3/8" [162mm]  
5150WH=Frost Dome Glass Lens with Reflector, White Plastic Trim  
5150SN=Frost Dome Glass Lens with Reflector, Satin Nickel Plastic Trim  
5150TBZ=Frost Dome Glass Lens with Reflector, Tuscan Bronze Plastic Trim



**5162 Drop Opal Plastic Lens, Self-flange - Showerlight**  
OD: 6-3/8" [162mm]  
5162WH=Drop Opal Plastic Lens with Reflector, White Plastic Self-flange



**5230 Squirrel Frost Glass Lens, Metal Trim, Self-flange - Showerlight**  
OD: 6-3/4" [172mm]  
5230AH=Frost Glass Lens, Aluminum Haze Squirrel Trim  
5230PN=Frost Glass Lens, Polished Nickel Squirrel Trim  
5230AH=Frost Glass Lens, Satin Nickel Squirrel Trim  
5230AH=Frost Glass Lens, Tuscan Bronze Squirrel Trim



**5255 Soft Square, Frost Curve Glass Lens, Self-flange - Showerlight**  
OD: 6-3/4" [172mm]  
5255WH=Frost Curve Glass Lens with Reflector, White Plastic Trim  
5255SN=Frost Curve Glass Lens with Reflector, Satin Nickel Plastic Trim  
5230TBZ=Frost Curve Glass Lens with Reflector, Tuscan Bronze Plastic Trim

#### Open, Splay & Wall Wash



**5000 PAR Metal Splay, Self-flange**  
OD: 6-3/8" [162mm]  
5000P=White Splay and Trim  
5000SN=Satin Nickel Splay and Trim  
5000TBZ=Tuscan Bronze Splay and Trim



**5175 Open, Wide, Self-flange**  
OD: 6-3/8" [162mm]  
5175WH=White Trim  
5175SN=Satin Nickel Trim  
5175TBZ=Tuscan Bronze Trim



**5176 Open, Wide, Self-flange**  
OD: 6-3/8" [162mm]  
5176WH=White Trim  
5176SN=Satin Nickel Trim  
5176TBZ=Tuscan Bronze Trim



**5185 Open, Splay, Self-flange**  
OD: 6-3/8" [162mm]  
5185WH=White Trim  
5185SN=Satin Nickel Trim  
5185TBZ=Tuscan Bronze Trim



**5186 Splay, Self-flange**  
OD: 6-3/8" [162mm]  
5186WH=White Trim  
5186SN=Satin Nickel Trim  
5186TBZ=Tuscan Bronze Trim



**5030 Wall Wash with Baffle**  
OD: 6-3/8" [162mm]  
5030W=White Eyelid with White Baffle and Trim  
5030P=White Eyelid with Black Baffle, White Trim

\*Outdoor rated lamp only (purchase separately)