

E26 5" Trim Series

DESCRIPTION

Regressed adjustable up to 30° tilt with self-flange in the 5" trim family for use in recessed downlighting. Compatible for use in Halo and other housings.

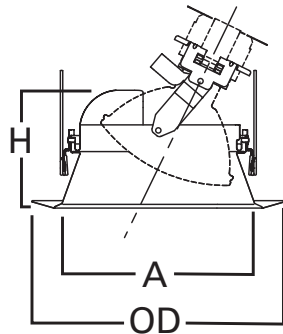
Catalog #		Type
Project		
Comments		Date
Prepared by		

SPECIFICATION FEATURES

- Fully regressed lamp position with PAR30S lamp
- Torsion spring retention
- 30° Tilt, 360° rotation
- Socket supporting
- Reflector and baffle options
- Accommodates tilt in a full regressed cut cone
- Self-flanged trim ring sized to hide gaps caused by construction tolerances.

Housings	Max Lamp Compatibility
H5ICAT H5RICAT	39W PAR30S, 60W PAR30L
E5ICAT E5RICAT	
H5ICATNB	39W PAR30S, 60W PAR30L
E5ICATNB	
H5T H5RT	60W PAR16, 50W PAR20, 75W PAR30S, 75W PAR30L
E5TAT E5RTAT	
H5TNB	75W PAR30S, 75W PAR30L, 60W PAR16, 50W PAR20
E5TATNB	

Compatible with Halogen, Incandescent, LED* or CFL* lamps.



Dimensions:

A: 5" [127mm]
 H: 3-1/8" [79mm]
 OD: 6-5/8" [168mm]

ORDERING INFORMATION

SAMPLE NUMBER: 5120WH

Trim	Finish
5222= 5" Regressed Adjustable, Self-flange	WB =White baffle, White trim BB =Black baffle, White trim SC =Specular clear reflector, White trim H =Haze reflector, White trim

HOUSING COMPATIBILITY

Trim #	Style	H5ICAT	H5RICAT	E5ICAT	E5RICAT	H25ICAT	H5ICATNB	E5ICATNB	H25ICATNB
5222	Adjustable	•	•	•	•	—	•	•	—
		H5T	H5RT	E5TAT	E5RTAT	H5TNB	E5TATNB		
		•	•	•	•	•	•		

For use in select other's housings, refer to U.L. classification list at www.eaton.com/lighting/legal.

*UL1993 listed LED & CFL equivalent lamps permitted. Consult lamp manufacturer for conditions of use. Eaton does not warranty the lamp.



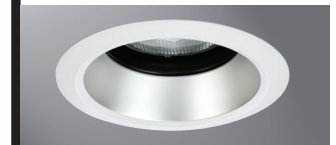
5222WB
White Baffle,
White Trim



5222BB
Black Baffle,
White Trim



5222SC
Specular Clear Reflector,
White Trim



5222H
Haze Reflector,
White Trim

5222

5-Inch Regressed
Adjustable, Self-flange



For use in Halo listed housings.



Select trims are classified for use in others housings. See www.eaton.com/lighting/legal.