

E26 5" Trim Series

DESCRIPTION

Full cone baffle trim with self-flange in the 5" trim family for use in recessed downlighting. Compatible for use in Halo and other housings.

Catalog #		Type
Project		
Comments		Date
Prepared by		

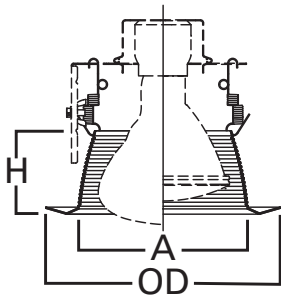
SPECIFICATION FEATURES

- Full cone metal baffle
- Torsion spring retention
- Socket supporting
- Self-flanged trim ring sized to hide gaps caused by construction tolerances

Housings	Max Lamp Compatibility
H5ICAT H5RICAT	50W PAR30S, 75W PAR30L, 65W BR30
E5ICAT E5RICAT	
H25ICAT	50W PAR30S, 60W PAR30L, 60W BR30
H5T H5RT	75W PAR30S, 75W PAR30L, 65W BR30
E5TAT E5RTAT	

Compatible with Halogen, Incandescent, LED* or CFL* lamps.

IC

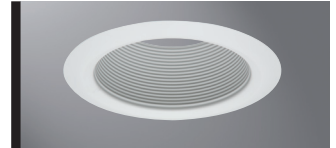


Dimensions:

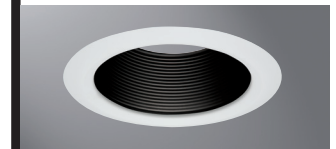
A: 4-3/4" [121mm]

H: 2-3/8" [60mm]

OD: 6-5/8" [168mm]



5102WB
White Baffle,
White Trim



5102BB
Black Baffle,
White Trim

5102

5102
5-Inch Tapered Metal Baffle,
Self-flange

ORDERING INFORMATION

SAMPLE NUMBER: 5120WH

Trim	Finish
5102= 5" Tapered Metal Baffle, Self-flange	WB=Matte White baffle, Matte White trim BB=Black baffle, White trim

HALO HOUSING COMPATIBILITY

Trim #	Style	H5ICAT	H5RICAT	E5ICAT	E5RICAT	H25ICAT	H5ICATNB	E5ICATNB	H25ICATNB
5102	Baffle	•	•	•	•	•	—	—	—
		H5T	H5RT	E5TAT	E5RTAT	H5TNB	E5TATNB		
		•	•	•	•	—	—		

For use in other's housings, refer to U.L. Classification list at www.eaton.com/lighting/legal.



For use in Halo listed housings.



Select trims are classified for use in others housings. See www.eaton.com/lighting/legal.

*UL1993 listed LED & CFL equivalent lamps permitted. Consult lamp manufacturer for conditions of use. Eaton does not warranty the lamp.