

## DESCRIPTION

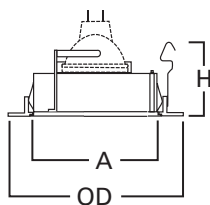
Adjustable slot aperture trim for 12V low voltage 4" H1499 family recessed housings. Die cast trim ring with slot aperture. Trim is available in a variety of finishes. Three "cat's paw" springs secure trim in housing.

Catalog #		Type
Project		
Comments		Date
Prepared by		

## SPECIFICATION FEATURES

- Precision die cast metal trim ring with slot aperture
- For directional accent lighting
- 35° tilt, 360° rotation
- Friction clip "cat paw" retention
- Clear cover glass included with each trim, for use with non-cover glass MR16 lamps

Housings	Max Lamp Compatibility
H1499TAT H1499RTAT	50W 12V MR16
H1499ICAT H1499TCP	
H1499T75	75W 12V MR16



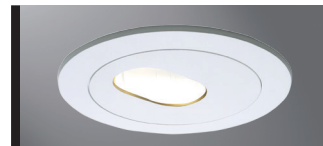
### Dimensions\*

A: 2-1/8" x 1-3/8"  
[53mm x 35mm]  
H: 1-1/4" [32mm]  
OD: 5" [129mm]

## ORDERING INFORMATION

SAMPLE NUMBER: 1420SN

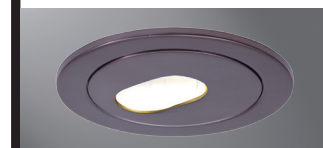
Trim	Finish
1420= 4" Adjustable Slot Aperture, 35° Tilt	P=Slot Aperture, White Trim SN=Slot Aperture, Satin Nickel Trim TBZ=Slot Aperture, Tuscan Bronze Trim



**1420P**  
Slot Aperture,  
White Trim



**1420SN**  
Slot Aperture,  
Satin Nickel Trim



**1420TBZ**  
Slot Aperture,  
Tuscan Bronze Trim

## 1420

4-Inch Adjustable  
Slot Aperture

\*Key: A: Luminous Aperture, H: Height, OD: Trim Outside Diameter